

2025 Rhode Island Public Library Statistical Report: Staffing and Salaries

Release date: December 2025

These data tables are part of a statistical report based on data collected in the 2025 Rhode Island Public Library Annual Survey. The full report is located on the Office of Library and Information Services (OLIS) website at <https://olis.ri.gov/programs-and-support/library-statistics/public-library-annual-survey>.

Data collected through the Annual Survey covers FY2025 (July 1, 2024 - June 30, 2025). The deadline for the report submission was September 15, 2025.

The Office of Library and Information Services (OLIS) participates in the national Public Libraries Survey (PLS), which is administered annually by the Institute of Museum and Library Services (IMLS). Data submitted to the PLS goes through a vetting process to ensure accuracy. Preliminary data is returned to the states annually, but is not considered finalized until published by IMLS. The data made available by OLIS through this statistical report is preliminary data, with a few corrected data points from individual libraries.

To enhance comparability, OLIS has calculated hourly wage rates, based on a 52-week year, for positions where only annual salary information was provided. OLIS also calculated the annual salary for any director positions that were reported with an hourly wage, to add further comparability for those positions. The data reflects salary information as of June 30, 2025.

For municipalities in which more than one independent library system operates, library service areas were determined by OLIS using a spatial analysis of patron location. The municipal population was apportioned based on the geographic location and density of each library's patrons within the municipality. Only the population within the designated library service area is reflected in the population figure for each of the 17 libraries that share municipalities.

These data tables include summary statistics and performance measures calculated by OLIS. If you have questions about using the data, suggestions for improvements, or have developed analyses that would be helpful to the community, please contact Kelly Metzger, kelly.metzger@olis.ri.gov.

Click on one of the links below or one of the tabs to view individual sheets.

[Positions](#)
[Library Summary](#)
[Library Summary by population](#)
[Staff Measures](#)
[Staff Measures by population](#)
[Rank by System Square Footage](#)
[Salary Ranges - statewide](#)
[Salary Ranges by population](#)
[Salary Ranges by Full Time and Part Time Status](#)
[Job Category definitions](#)
[All Data](#)
[Other Data](#)

Charts:
[Average wage by supervisor status](#)
[Percent change in average wage by job category](#)
[Wage ranges by category and supervisor status](#)



Staff Positions by Library FY2025

Location	Municipality	Population	Job Category	Number of Staff	Position Title	Hourly Rate	Hourly Rate Calculated by OLIS	Annual Salary	Annual Salary Calculated by OLIS	Hours per Week	Degree Required	Supervisor?	Vacant?
Barrington Public Library	Barrington	17,153	Administrative Staff	1	Administrative Assistant	\$ 32.84	Yes	\$ 59,771		35	Bachelor's	No	No
Barrington Public Library	Barrington	17,153	Adult Services	1	Head of Information Services	\$ 38.65	Yes	\$ 70,339		35	MLS	Yes	No
Barrington Public Library	Barrington	17,153	Adult Services	1	Community Engagement Librarian	\$ 34.89	Yes	\$ 63,497		35	MLS	Yes	No
Barrington Public Library	Barrington	17,153	Adult Services	1	Reference Assistant	\$ 20.11	No			18.5	Bachelor's	No	No
Barrington Public Library	Barrington	17,153	Adult Services	1	Reference Assistant	\$ 24.00	No			16	Bachelor's	No	No
Barrington Public Library	Barrington	17,153	Adult Services	2	Reference Assistant	\$ 24.00	No			4	Bachelor's	No	No
Barrington Public Library	Barrington	17,153	Adult Services	1	Reference Assistant	\$ 19.72	No			4	Bachelor's	No	No
Barrington Public Library	Barrington	17,153	Adult Services	1	Reference Assistant	\$ 20.11	No			15	Bachelor's	No	No
Barrington Public Library	Barrington	17,153	Adult Services	1	Reference Assistant	\$ 24.00	No			9	Bachelor's	No	No
Barrington Public Library	Barrington	17,153	Adult Services	1	Home Delivery	\$ 20.11	No			2.5	Bachelor's	No	No
Barrington Public Library	Barrington	17,153	Borrower Services	1	Head of Circulation	\$ 33.26	Yes	\$ 60,542		35	Bachelor's	Yes	No
Barrington Public Library	Barrington	17,153	Borrower Services	1	Library Assistant II	\$ 23.43	Yes	\$ 42,636		35	HS Diploma	No	No
Barrington Public Library	Barrington	17,153	Borrower Services	1	Library Assistant II	\$ 21.48	Yes	\$ 39,099		35	HS Diploma	No	No
Barrington Public Library	Barrington	17,153	Children's Services	1	Head of Children's Services	\$ 38.65	Yes	\$ 70,339		35	MLS	Yes	No
Barrington Public Library	Barrington	17,153	Children's Services	1	Family Engagement Librarian	\$ 26.67	Yes	\$ 48,547		35	MLS	No	No
Barrington Public Library	Barrington	17,153	Children's Services	1	Children Assistant I	\$ 23.69	No			21	Bachelor's	No	No
Barrington Public Library	Barrington	17,153	Children's Services	1	Children Assistant I	\$ 18.54	No			6	Bachelor's	No	No
Barrington Public Library	Barrington	17,153	Children's Services	1	Children Assistant I	\$ 20.12	No			10	Bachelor's	No	No
Barrington Public Library	Barrington	17,153	Children's Services	1	Children Assistant II	\$ 18.54	No			2	HS Diploma	No	No
Barrington Public Library	Barrington	17,153	Collection Management	1	Head of Collection Management/ Assistant Director	\$ 45.90	Yes	\$ 83,537		35	MLS	Yes	No
Barrington Public Library	Barrington	17,153	Collection Management	1	Collections Management Assistant	\$ 24.12	Yes	\$ 43,890		35	Bachelor's	No	No
Barrington Public Library	Barrington	17,153	Collection Management	1	Collection Management Assistant II	\$ 17.51	No			5	HS Diploma	No	No
Barrington Public Library	Barrington	17,153	Digital Services	1	Digital Services Librarian	\$ 31.52	Yes	\$ 57,373		35	MLS	No	No
Barrington Public Library	Barrington	17,153	Director	1	Director	\$ 55.78	Yes	\$ 101,515	No	35	MLS	Yes	No
Barrington Public Library	Barrington	17,153	Facilities Maintenance	1	Head Custodian	\$ 27.34	Yes	\$ 49,761		35	HS Diploma	Yes	No
Barrington Public Library	Barrington	17,153	Facilities Maintenance	1	Custodian	\$ 19.20	No			12	HS Diploma	No	No
Barrington Public Library	Barrington	17,153	Facilities Maintenance	1	Custodian	\$ 19.20	No			15	HS Diploma	No	No
Barrington Public Library	Barrington	17,153	Facilities Maintenance	1	Custodian	\$ 18.54	No			12	HS Diploma	No	No
Barrington Public Library	Barrington	17,153	Facilities Maintenance	1	Custodian	\$ 17.51	No			8	HS Diploma	No	No
Barrington Public Library	Barrington	17,153	Facilities Maintenance	1	Custodian	\$ 17.00	No			9	HS Diploma	No	No
Barrington Public Library	Barrington	17,153	Information Technology	1	Information Technology Coordinator	\$ 35.76	Yes	\$ 65,083		35	Bachelor's	No	No
Barrington Public Library	Barrington	17,153	Page	3	Page	\$ 15.45	No			3	None	No	No
Barrington Public Library	Barrington	17,153	Page	4	Page	\$ 16.07	No			6	None	No	No
Barrington Public Library	Barrington	17,153	Teen Services	1	Young Adult Librarian	\$ 35.16	Yes	\$ 63,990		35	MLS	No	No
Rogers Free Library	Bristol	22,493	Administrative Staff	1	Bookkeeper	\$ 29.09	No			15	Bachelor's	No	No
Rogers Free Library	Bristol	22,493	Adult Services	1	Adult Programming & Outreach Coordinator	\$ 26.41	No			37.5	Master's	Yes	No
Rogers Free Library	Bristol	22,493	Adult Services	1	Reference Librarian	\$ 26.41	Yes	\$ 51,500		37.5	MLS	Yes	No
Rogers Free Library	Bristol	22,493	Adult Services	1	Adult Services Librarian	\$ 23.00	No			26	MLS	No	No
Rogers Free Library	Bristol	22,493	Adult Services	1	Reference Library Associate/Library Historian	\$ 21.67	No			25	Bachelor's	No	No
Rogers Free Library	Bristol	22,493	Adult Services	1	Reference Library Associate	\$ 18.65	No			16	Bachelor's	No	Yes
Rogers Free Library	Bristol	22,493	Borrower Services	1	Circulation & Collection Management Librarian	\$ 25.64	Yes	\$ 50,000		37.5	MLS	Yes	Yes
Rogers Free Library	Bristol	22,493	Borrower Services	1	Circulation Associate	\$ 18.60	No			24	Bachelor's	No	No
Rogers Free Library	Bristol	22,493	Borrower Services	1	Circulation Associate	\$ 17.83	No			11	Bachelor's	No	No
Rogers Free Library	Bristol	22,493	Borrower Services	1	Circulation Associate	\$ 17.49	No			26	Bachelor's	No	No
Rogers Free Library	Bristol	22,493	Borrower Services	2	Circulation Associate Substitute	\$ 17.49	No			0	HS Diploma	No	No
Rogers Free Library	Bristol	22,493	Borrower Services	1	Circulation Associate	\$ 17.15	No			11	Bachelor's	No	No
Rogers Free Library	Bristol	22,493	Borrower Services	1	Circulation Associate	\$ 17.15	No			10	Bachelor's	No	No
Rogers Free Library	Bristol	22,493	Borrower Services	1	Circulation Associate	\$ 17.15	No			7	HS Diploma	No	No
Rogers Free Library	Bristol	22,493	Borrower Services	1	Circulation Associate	\$ 17.15	No			14	Bachelor's	No	No
Rogers Free Library	Bristol	22,493	Borrower Services	1	Circulation Associate	\$ 17.15	No			13	Bachelor's	No	Yes
Rogers Free Library	Bristol	22,493	Borrower Services	1	Circulation Associate	\$ 17.15	No			17	Bachelor's	No	No
Rogers Free Library	Bristol	22,493	Children's Services	1	Storytime Librarian	\$ 23.55	No			18	MLS	No	No
Rogers Free Library	Bristol	22,493	Children's Services	1	Children's Library Associate	\$ 18.78	No			12	Bachelor's	No	No
Rogers Free Library	Bristol	22,493	Children's Services	1	Children's Library Associate	\$ 18.65	No			4	Bachelor's	No	No
Rogers Free Library	Bristol	22,493	Children's Services	1	Children's Library Associate	\$ 17.83	No			11	Bachelor's	No	No
Rogers Free Library	Bristol	22,493	Children's Services	1	Children's Library Associate	\$ 17.49	No			20	Bachelor's	No	No
Rogers Free Library	Bristol	22,493	Children's Services	1	Children's Library Associate	\$ 17.49	No			19	Bachelor's	No	No
Rogers Free Library	Bristol	22,493	Children's Services	1	Children's Library Associate	\$ 17.49	No			14	Bachelor's	No	No
Rogers Free Library	Bristol	22,493	Children's Services	1	Children's Library Associate	\$ 17.49	No			8	Bachelor's	No	No
Rogers Free Library	Bristol	22,493	Children's Services	1	Children's Library Associate	\$ 17.49	No			16	Bachelor's	No	No
Rogers Free Library	Bristol	22,493	Director	1	Library Director	\$ 47.17	Yes	\$ 91,979	No	37.5	MLS	Yes	No
Rogers Free Library	Bristol	22,493	Facilities Maintenance	1	Facilities Specialist	\$ 22.71	No			20	HS Diploma	No	No
Rogers Free Library	Bristol	22,493	Information Technology	1	Information Technology Coordinator	\$ 26.41	Yes	\$ 51,500		37.5	Bachelor's	Yes	No
Rogers Free Library	Bristol	22,493	Page	1	Page	\$ 15.00	No			6	None	No	No
Rogers Free Library	Bristol	22,493	Teen Services	1	Teen & Adult Services Librarian	\$ 26.41	Yes	\$ 51,500		37.5	MLS	Yes	No
Rogers Free Library	Bristol	22,493	Youth Services (Children & Teen)	1	Youth Services Coordinator	\$ 26.41	Yes	\$ 51,500		37.5	MLS	Yes	No
Jesse M. Smith Memorial Library	Burrillville	12,330	Adult Services	1	Head Reference Librarian	\$ 31.87	No			35	MLS	Yes	No
Jesse M. Smith Memorial Library	Burrillville	12,330	Adult Services	1	Reference Library Assistant	\$ 20.00	No			18	HS Diploma	No	No
Jesse M. Smith Memorial Library	Burrillville	12,330	Assistant Director	1	Assistant Director	\$ 38.41	No			35	MLS	Yes	No
Jesse M. Smith Memorial Library	Burrillville	12,330	Borrower Services	2	Library Assistant II	\$ 16.96	No			18	HS Diploma	No	No
Jesse M. Smith Memorial Library	Burrillville	12,330	Borrower Services	1	Library Assistant III	\$ 19.86	No			19.5	HS Diploma	No	No
Jesse M. Smith Memorial Library	Burrillville	12,330	Borrower Services	1	Head of Circulation	\$ 30.77	No			35	Bachelor's	Yes	No
Jesse M. Smith Memorial Library	Burrillville	12,330	Borrower Services	1	Library Assistant II	\$ 16.96	No			19	HS Diploma	No	No
Jesse M. Smith Memorial Library	Burrillville	12,330	Borrower Services	1	Library Assistant III	\$ 25.28	No			35	HS Diploma	Yes	No
Jesse M. Smith Memorial Library	Burrillville	12,330	Children's Services	1	Children's Librarian	\$ 30.77	No			35	MLS	No	No

Staff Positions by Library FY2025

Location	Municipality	Population	Job Category	Number of Staff	Position Title	Hourly Rate	Hourly Rate Calculated by OLIS	Annual Salary	Annual Salary Calculated by OLIS	Hours per Week	Degree Required	Supervisor?	Vacant?
Jesse M. Smith Memorial Library	Burrillville	12,330	Children's Services	1	Children's Library Assistant	\$ 20.22	No			18	HS Diploma	No	No
Jesse M. Smith Memorial Library	Burrillville	12,330	Children's Services	1	Children's Library Assistant	\$ 20.22	No			19.5	HS Diploma	No	No
Jesse M. Smith Memorial Library	Burrillville	12,330	Children's Services	1	Head Children's Librarian	\$ 33.52	No			35	MLS	Yes	No
Jesse M. Smith Memorial Library	Burrillville	12,330	Director	1	Director	\$ 46.65	No	\$ 84,903	Yes	35	MLS	Yes	No
Jesse M. Smith Memorial Library	Burrillville	12,330	Facilities Maintenance	1	Building and Grounds Supervisor	\$ 25.91	No			40	HS Diploma	No	No
Jesse M. Smith Memorial Library	Burrillville	12,330	Page	1	Page	\$ 15.00	No			14	None	No	No
Jesse M. Smith Memorial Library	Burrillville	12,330	Teen Services	1	Teen Librarian	\$ 31.32	No			35	MLS	Yes	No
Pascoag Free Public Library	Burrillville	3,828	Borrower Services	1	Circ/Adult Programming	\$ 21.00	No	\$ 18,564		17	Bachelor's	Yes	No
Pascoag Free Public Library	Burrillville	3,828	Borrower Services	1	Library Associate	\$ 16.00	Yes	\$ 9,984		12	HS Diploma	No	No
Pascoag Free Public Library	Burrillville	3,828	Borrower Services	1	Library Associate	\$ 15.00	No	\$ 16,380		21	HS Diploma	No	No
Pascoag Free Public Library	Burrillville	3,828	Director	1	Library Director	\$ 25.00	No	\$ 28,600	No	22	MLS	Yes	No
Pascoag Free Public Library	Burrillville	3,828	Facilities Maintenance	1	Inside Maintenance	\$ 15.00	No	\$ 3,120		4	HS Diploma	No	No
Pascoag Free Public Library	Burrillville	3,828	Facilities Maintenance	1	Grounds Maintenance/Handyman	\$ 15.00	No	\$ 2,340		3	HS Diploma	No	No
Pascoag Free Public Library	Burrillville	3,828	Youth Services (Children & Teen)	1	Youth Services Librarian	\$ 20.00	No	\$ 15,600		15	MLS	Yes	No
Adams Public Library	Central Falls	22,583	Borrower Services	1	Circ. Assistant	\$ 15.00	No			4	None	No	No
Adams Public Library	Central Falls	22,583	Borrower Services	3	Circ. Assistant	\$ 15.00	No			20	None	No	No
Adams Public Library	Central Falls	22,583	Borrower Services	2	Circ. Assistant	\$ 15.00	No			26	None	No	No
Adams Public Library	Central Falls	22,583	Collection Management	1	Tech. Services/Cataloger	\$ 18.00	No			20	None	Yes	No
Adams Public Library	Central Falls	22,583	Director	1	Library Director	\$ 36.06	Yes	\$ 75,000	No	40	MLS	Yes	No
Adams Public Library	Central Falls	22,583	Facilities Maintenance	1	Custodian	\$ 15.00	No			20	None	No	No
Cross' Mills Public Library	Charlestown	7,997	Administrative Staff	1	Bookkeeper	\$ 24.00	No			2	Bachelor's	No	No
Cross' Mills Public Library	Charlestown	7,997	Adult Services	1	Community Services Librarian	\$ 28.00	No			35	MLS	Yes	No
Cross' Mills Public Library	Charlestown	7,997	Borrower Services	1	Circulation Supervisor	\$ 21.81	No			35	HS Diploma	Yes	No
Cross' Mills Public Library	Charlestown	7,997	Borrower Services	1	Circulation Assistant	\$ 18.00	No			19	HS Diploma	No	No
Cross' Mills Public Library	Charlestown	7,997	Borrower Services	2	Circulation Assistant	\$ 17.00	No			19	HS Diploma	No	No
Cross' Mills Public Library	Charlestown	7,997	Children's Services	1	Misc Director	\$ 23.00	No			6	Other	No	No
Cross' Mills Public Library	Charlestown	7,997	Digital Services	1	Technology Coordinator	\$ 19.00	No			24	HS Diploma	No	No
Cross' Mills Public Library	Charlestown	7,997	Director	1	Executive Director	\$ 39.89	No	\$ 82,971	Yes	40	MLS	Yes	No
Cross' Mills Public Library	Charlestown	7,997	Facilities Maintenance	1	Caretaker	\$ 21.00	No			15	None	No	No
Cross' Mills Public Library	Charlestown	7,997	Facilities Maintenance	1	Custodian	\$ 26.00	No			5	None	No	No
Cross' Mills Public Library	Charlestown	7,997	Page	1	Shelver	\$ 15.00	No			3	None	No	No
Coventry Public Library	Coventry	35,688	Administrative Staff	1	Finance Clerk/Tech Services	\$ 21.84	No			14	Bachelor's	No	No
Coventry Public Library	Coventry	35,688	Adult Services	1	Head of Adult Services	\$ 32.97	Yes	\$ 60,000		35	MLS	Yes	No
Coventry Public Library	Coventry	35,688	Adult Services	1	PT Librarian	\$ 23.46	No			15.5	MLS	No	No
Coventry Public Library	Coventry	35,688	Adult Services	1	PT Reference Assistant	\$ 20.00	No			20.5	Bachelor's	No	No
Coventry Public Library	Coventry	35,688	Adult Services	1	PT Reference Assistant	\$ 19.64	No			7	Bachelor's	No	No
Coventry Public Library	Coventry	35,688	Adult Services	1	PT Reference Assistant	\$ 19.00	No			18.5	Bachelor's	No	No
Coventry Public Library	Coventry	35,688	Assistant Director	1	Assistant Director	\$ 34.07	Yes	\$ 62,000		35	MLS	Yes	No
Coventry Public Library	Coventry	35,688	Borrower Services	1	Circulation Manager	\$ 27.06	No			35	Bachelor's	Yes	No
Coventry Public Library	Coventry	35,688	Borrower Services	1	PT Library Assistant	\$ 15.00	No			12	Bachelor's	No	No
Coventry Public Library	Coventry	35,688	Borrower Services	1	PT Circulation Assistant	\$ 15.00	No			4.25	HS Diploma	No	No
Coventry Public Library	Coventry	35,688	Borrower Services	1	PT Circulation Assistant	\$ 15.00	No			25.5	HS Diploma	No	No
Coventry Public Library	Coventry	35,688	Borrower Services	1	PT Circulation Assistant	\$ 15.00	No			15	HS Diploma	No	No
Coventry Public Library	Coventry	35,688	Borrower Services	1	PT Circulation Assistant	\$ 15.00	No			11.5	HS Diploma	No	No
Coventry Public Library	Coventry	35,688	Borrower Services	1	PT Circulation Assistant	\$ 15.00	No			8	HS Diploma	No	No
Coventry Public Library	Coventry	35,688	Borrower Services	1	PT Circulation Assistant	\$ 15.30	No			7	HS Diploma	No	No
Coventry Public Library	Coventry	35,688	Borrower Services	1	PT Circulation Assistant	\$ 15.30	No			19	HS Diploma	No	No
Coventry Public Library	Coventry	35,688	Borrower Services	1	PT Circulation Assistant	\$ 15.30	No			8.25	HS Diploma	No	No
Coventry Public Library	Coventry	35,688	Borrower Services	1	PT Circulation Assistant	\$ 17.05	No			21	HS Diploma	No	No
Coventry Public Library	Coventry	35,688	Branch Manager	1	Branch Manager	\$ 23.46	No			19	MLS	Yes	No
Coventry Public Library	Coventry	35,688	Children's Services	1	Outreach Librarian	\$ 27.85	No			35	MLS	No	No
Coventry Public Library	Coventry	35,688	Children's Services	1	PT Children's Librarian	\$ 20.00	No			18.5	Bachelor's	No	No
Coventry Public Library	Coventry	35,688	Children's Services	1	PT Children's Librarian	\$ 19.43	No			7.5	Bachelor's	No	No
Coventry Public Library	Coventry	35,688	Children's Services	1	PT Children's Assistant	\$ 18.50	No			8	Bachelor's	No	No
Coventry Public Library	Coventry	35,688	Collection Management	1	Head of Technical Services	\$ 36.42	Yes	\$ 66,284		35	MLS	Yes	No
Coventry Public Library	Coventry	35,688	Director	1	Director	\$ 41.21	Yes	\$ 75,000	No	35	MLS	Yes	No
Coventry Public Library	Coventry	35,688	Facilities Maintenance	2	Custodian/Maintenance	\$ 23.30	No			20	Other	No	No
Coventry Public Library	Coventry	35,688	Information Technology	1	IT Director	\$ 51.25	No			15	Other	No	No
Coventry Public Library	Coventry	35,688	Page	1	Page	\$ 15.00	No			20	HS Diploma	No	No
Coventry Public Library	Coventry	35,688	Youth Services (Children & Teen)	1	Head of Youth Services	\$ 32.97	Yes	\$ 60,000		35	MLS	Yes	No
Coventry Public Library	Coventry	35,688	Youth Services (Children & Teen)	1	Teen Librarian	\$ 29.86	No			35	MLS	No	No
Cranston Public Library	Cranston	82,934	Administrative Staff	1	Communications Manager	\$ 37.23	Yes	\$ 67,766		35	Other	No	No
Cranston Public Library	Cranston	82,934	Administrative Staff	1	Administrative Assistant	\$ 24.14	Yes	\$ 43,928		35	HS Diploma	No	No
Cranston Public Library	Cranston	82,934	Administrative Staff	1	Business Manager	\$ 37.23	Yes	\$ 67,760		35	HS Diploma	No	No
Cranston Public Library	Cranston	82,934	Administrative Staff	1	Driver	\$ 15.00	No			20	None	No	No
Cranston Public Library	Cranston	82,934	Adult Services	1	Head Of Adult Services Librarian III	\$ 50.15	Yes	\$ 91,271		35	MLS	Yes	No
Cranston Public Library	Cranston	82,934	Adult Services	1	Information Services Librarian I	\$ 38.85	Yes	\$ 70,698		35	MLS	No	No
Cranston Public Library	Cranston	82,934	Adult Services	1	Library Assistant II	\$ 28.13	Yes	\$ 51,189		35	HS Diploma	No	No
Cranston Public Library	Cranston	82,934	Adult Services	1	Information Services Librarian I	\$ 39.21	Yes	\$ 71,356		35	MLS	No	No
Cranston Public Library	Cranston	82,934	Adult Services	1	Information Services Librarian I	\$ 40.36	Yes	\$ 73,449		35	MLS	No	No
Cranston Public Library	Cranston	82,934	Adult Services	1	Librarian	\$ 21.00	No			7	MLS	No	No
Cranston Public Library	Cranston	82,934	Adult Services	1	Librarian	\$ 21.00	No			4	MLS	No	No
Cranston Public Library	Cranston	82,934	Adult Services	1	Librarian	\$ 21.00	No			9	MLS	No	No
Cranston Public Library	Cranston	82,934	Adult Services	1	Librarian	\$ 21.00	No			10	MLS	No	No

Staff Positions by Library FY2025

Location	Municipality	Population	Job Category	Number of Staff	Position Title	Hourly Rate	Hourly Rate Calculated by OLIS	Annual Salary	Annual Salary Calculated by OLIS	Hours per Week	Degree Required	Supervisor?	Vacant?
Cranston Public Library	Cranston	82,934	Adult Services	1	Librarian	\$ 21.00	No			5	MLS	No	No
Cranston Public Library	Cranston	82,934	Assistant Director	1	Assistant Library Director	\$ 57.82	Yes	\$ 105,225		35	MLS	Yes	No
Cranston Public Library	Cranston	82,934	Borrower Services	1	Library Assistant II	\$ 21.73	Yes	\$ 39,556		35	HS Diploma	No	No
Cranston Public Library	Cranston	82,934	Borrower Services	1	Library Assistant II	\$ 28.13	Yes	\$ 51,189		35	HS Diploma	No	No
Cranston Public Library	Cranston	82,934	Borrower Services	1	Library Assistant II	\$ 22.51	Yes	\$ 40,973		35	HS Diploma	No	No
Cranston Public Library	Cranston	82,934	Borrower Services	1	Library Assistant II	\$ 25.01	Yes	\$ 45,514		35	HS Diploma	No	No
Cranston Public Library	Cranston	82,934	Borrower Services	1	Library Assistant II	\$ 27.09	Yes	\$ 49,300		35	HS Diploma	No	No
Cranston Public Library	Cranston	82,934	Borrower Services	1	Head Of Circulation Library Assistant III	\$ 31.89	Yes	\$ 58,048		35	HS Diploma	Yes	No
Cranston Public Library	Cranston	82,934	Borrower Services	1	Librarian	\$ 21.00	No			3	MLS	No	No
Cranston Public Library	Cranston	82,934	Borrower Services	1	Librarian	\$ 21.00	No			15	MLS	No	No
Cranston Public Library	Cranston	82,934	Borrower Services	1	Library Aide	\$ 15.00	No			3	HS Diploma	No	No
Cranston Public Library	Cranston	82,934	Borrower Services	4	Library Aide	\$ 15.00	No			4	HS Diploma	No	No
Cranston Public Library	Cranston	82,934	Borrower Services	2	Library Aide	\$ 15.00	No			6	HS Diploma	No	No
Cranston Public Library	Cranston	82,934	Borrower Services	1	Library Aide	\$ 15.00	No			8	None	No	No
Cranston Public Library	Cranston	82,934	Borrower Services	1	Library Aide	\$ 15.00	No			8	HS Diploma	No	No
Cranston Public Library	Cranston	82,934	Borrower Services	1	Library Aide	\$ 15.00	No			9	HS Diploma	No	No
Cranston Public Library	Cranston	82,934	Borrower Services	2	Library Aide	\$ 15.00	No			10	HS Diploma	No	No
Cranston Public Library	Cranston	82,934	Borrower Services	1	Library Aide	\$ 15.00	No			11	HS Diploma	No	No
Cranston Public Library	Cranston	82,934	Borrower Services	1	Library Aide	\$ 15.00	No			13	HS Diploma	No	No
Cranston Public Library	Cranston	82,934	Borrower Services	1	Library Aide	\$ 15.00	No			14	HS Diploma	No	No
Cranston Public Library	Cranston	82,934	Borrower Services	1	Library Aide	\$ 15.00	No			16	HS Diploma	No	No
Cranston Public Library	Cranston	82,934	Borrower Services	2	Library Aide	\$ 15.00	No			17	HS Diploma	No	No
Cranston Public Library	Cranston	82,934	Borrower Services	1	Library Aide	\$ 15.00	No			19	HS Diploma	No	No
Cranston Public Library	Cranston	82,934	Borrower Services	1	Library Assistant	\$ 15.40	No			20	HS Diploma	No	No
Cranston Public Library	Cranston	82,934	Borrower Services	1	Library Assistant	\$ 15.40	No			12	HS Diploma	No	No
Cranston Public Library	Cranston	82,934	Borrower Services	1	Library Assistant	\$ 15.40	No			3	HS Diploma	No	No
Cranston Public Library	Cranston	82,934	Borrower Services	1	Library Assistant	\$ 15.40	No			7	HS Diploma	No	No
Cranston Public Library	Cranston	82,934	Borrower Services	2	Library Assistant	\$ 15.40	No			10	HS Diploma	No	No
Cranston Public Library	Cranston	82,934	Borrower Services	1	Library Assistant	\$ 16.40	No			21	HS Diploma	No	No
Cranston Public Library	Cranston	82,934	Branch Manager	1	Branch Librarian II	\$ 42.38	Yes	\$ 77,130		35	MLS	Yes	No
Cranston Public Library	Cranston	82,934	Branch Manager	1	Branch Librarian I	\$ 38.12	Yes	\$ 69,374		35	MLS	Yes	No
Cranston Public Library	Cranston	82,934	Branch Manager	1	Branch Librarian I	\$ 40.36	Yes	\$ 73,449		35	MLS	Yes	No
Cranston Public Library	Cranston	82,934	Branch Manager	1	Branch Librarian II	\$ 47.49	Yes	\$ 86,436		35	MLS	Yes	No
Cranston Public Library	Cranston	82,934	Children's Services	1	Youth Services Librarian I	\$ 38.11	Yes	\$ 69,368		35	MLS	No	No
Cranston Public Library	Cranston	82,934	Children's Services	1	Youth Services Librarian I	\$ 38.85	Yes	\$ 70,699		35	MLS	No	No
Cranston Public Library	Cranston	82,934	Children's Services	1	Head Of Children's Services Librarian III	\$ 50.97	Yes	\$ 92,763		35	MLS	Yes	No
Cranston Public Library	Cranston	82,934	Collection Management	1	Cataloging Librarian I	\$ 38.12	Yes	\$ 69,374		35	MLS	No	No
Cranston Public Library	Cranston	82,934	Collection Management	1	Library Assistant II	\$ 27.57	Yes	\$ 50,185		35	HS Diploma	No	No
Cranston Public Library	Cranston	82,934	Collection Management	1	Library Assistant II	\$ 26.47	Yes	\$ 48,183		35	HS Diploma	No	No
Cranston Public Library	Cranston	82,934	Collection Management	1	Library Aide	\$ 15.00	No			20	HS Diploma	No	No
Cranston Public Library	Cranston	82,934	Director	1	Library Director	\$ 68.60	Yes	\$ 124,845	No	35	MLS	Yes	No
Cranston Public Library	Cranston	82,934	Facilities Maintenance	1	Head Custodian	\$ 22.26	Yes	\$ 40,519		35	HS Diploma	Yes	No
Cranston Public Library	Cranston	82,934	Facilities Maintenance	1	Custodian	\$ 15.00	No			15	None	No	No
Cranston Public Library	Cranston	82,934	Facilities Maintenance	4	Custodian	\$ 15.00	No			20	None	No	No
Cranston Public Library	Cranston	82,934	Information Technology	1	Technical Services/Systems Coord	\$ 39.56	Yes	\$ 72,000		35	Bachelor's	No	No
Cranston Public Library	Cranston	82,934	Page	1	Page	\$ 13.00	No			8	None	No	No
Cranston Public Library	Cranston	82,934	Page	1	Page	\$ 15.00	No			4	None	No	No
Cranston Public Library	Cranston	82,934	Page	1	Page	\$ 15.00	No			17	None	No	No
Cranston Public Library	Cranston	82,934	Page	1	Page	\$ 15.00	No			9	None	No	No
Cranston Public Library	Cranston	82,934	Page	1	Page	\$ 15.00	No			4	None	No	No
Cranston Public Library	Cranston	82,934	Page	1	Page	\$ 15.00	No			5	None	No	No
Cranston Public Library	Cranston	82,934	Page	1	Page	\$ 13.00	No			6	None	No	No
Cranston Public Library	Cranston	82,934	Teen Services	1	Young Adult Librarian I	\$ 38.12	Yes	\$ 69,374		35	MLS	No	No
Cranston Public Library	Cranston	82,934	Youth Services (Children & Teen)	1	Youth Services Librarian I	\$ 34.57	Yes	\$ 62,911		35	MLS	No	No
Cranston Public Library	Cranston	82,934	Youth Services (Children & Teen)	1	Youth Services Librarian I	\$ 29.49	Yes	\$ 53,676		35	MLS	No	Yes
Cranston Public Library	Cranston	82,934	Youth Services (Children & Teen)	1	Youth Services Librarian	\$ 21.00	No			6	MLS	No	No
Cranston Public Library	Cranston	82,934	Youth Services (Children & Teen)	1	Youth Services Librarian	\$ 21.00	No			12	MLS	No	No
Cranston Public Library	Cranston	82,934	Youth Services (Children & Teen)	1	Library Assistant	\$ 15.40	No			3	HS Diploma	No	No
Cranston Public Library	Cranston	82,934	Youth Services (Children & Teen)	1	Youth Services Librarian	\$ 21.00	No			10	MLS	No	No
Cranston Public Library	Cranston	82,934	Youth Services (Children & Teen)	1	Librarian	\$ 21.00	No			5	MLS	No	No
Cumberland Public Library	Cumberland	36,405	Administrative Staff	1	Administrative Assistant/Bookkeeper	\$ 28.09	No			35	HS Diploma	No	No
Cumberland Public Library	Cumberland	36,405	Adult Services	1	Adult Services Coordinator	\$ 36.09	Yes	\$ 65,688		35	MLS	Yes	No
Cumberland Public Library	Cumberland	36,405	Adult Services	1	Reference Services Coordinator	\$ 35.39	Yes	\$ 64,414		35	MLS	Yes	No
Cumberland Public Library	Cumberland	36,405	Adult Services	1	FT Reference/Outreach Coordinator	\$ 19.94	No			35	HS Diploma	No	No
Cumberland Public Library	Cumberland	36,405	Adult Services	2	PT Reference Assistant	\$ 18.69	No			22	HS Diploma	No	No
Cumberland Public Library	Cumberland	36,405	Assistant Director	1	Assistant Library Director/Technology Coordinator	\$ 39.88	Yes	\$ 72,579		35	MLS	Yes	No
Cumberland Public Library	Cumberland	36,405	Borrower Services	1	Circulation Supervisor	\$ 25.93	No			35	Other	Yes	No
Cumberland Public Library	Cumberland	36,405	Borrower Services	1	PT Desk Assistant	\$ 19.26	No			19.5	None	No	No
Cumberland Public Library	Cumberland	36,405	Borrower Services	1	PT Desk Assistant	\$ 18.17	No			19.5	None	No	No
Cumberland Public Library	Cumberland	36,405	Borrower Services	1	PT Desk Assistant	\$ 18.17	No			16.5	None	No	No
Cumberland Public Library	Cumberland	36,405	Borrower Services	4	PT Desk Assistant	\$ 17.46	No			19.5	None	No	No
Cumberland Public Library	Cumberland	36,405	Collection Management	1	FT Cataloger	\$ 23.34	No			35	HS Diploma	Yes	No
Cumberland Public Library	Cumberland	36,405	Collection Management	1	PT Catalog Assistant	\$ 18.17	No			19.5	None	No	No
Cumberland Public Library	Cumberland	36,405	Director	1	Library Director	\$ 50.13	Yes	\$ 91,234	No	35	MLS	Yes	No
Cumberland Public Library	Cumberland	36,405	Facilities Maintenance	1	Facility Manager	\$ 23.70	No			40	HS Diploma	Yes	No

Staff Positions by Library FY2025

Location	Municipality	Population	Job Category	Number of Staff	Position Title	Hourly Rate	Hourly Rate Calculated by OLIS	Annual Salary	Annual Salary Calculated by OLIS	Hours per Week	Degree Required	Supervisor?	Vacant?
Cumberland Public Library	Cumberland	36,405	Facilities Maintenance	3	PT Custodian	\$ 18.21	No			18	None	No	No
Cumberland Public Library	Cumberland	36,405	Page	1	PT Page	\$ 15.30	No			15	None	No	No
Cumberland Public Library	Cumberland	36,405	Page	2	PT Page	\$ 15.00	No			15	None	No	No
Cumberland Public Library	Cumberland	36,405	Page	1	PT Page	\$ 15.00	No			11	None	No	No
Cumberland Public Library	Cumberland	36,405	Teen Services	1	Teen Services Coordinator	\$ 33.38	Yes	\$ 60,754		35	MLS	Yes	No
Cumberland Public Library	Cumberland	36,405	Teen Services	1	PT Teen Services Assistant	\$ 19.44	No			22	HS Diploma	No	No
Cumberland Public Library	Cumberland	36,405	Youth Services (Children & Teen)	1	Children's Services Coordinator	\$ 34.70	Yes	\$ 63,162		35	MLS	Yes	No
Cumberland Public Library	Cumberland	36,405	Youth Services (Children & Teen)	1	FT Children's Assistant	\$ 21.94	No			35	HS Diploma	No	No
Cumberland Public Library	Cumberland	36,405	Youth Services (Children & Teen)	1	PT Children's Librarian	\$ 30.13	No			12.5	MLS	No	No
Cumberland Public Library	Cumberland	36,405	Youth Services (Children & Teen)	2	PT Children's Assistant	\$ 18.69	No			22	HS Diploma	No	No
East Greenwich Free Library	East Greenwich	14,312	Administrative Staff	1	Administrative Assistant	\$ 21.02	No			35	HS Diploma	No	No
East Greenwich Free Library	East Greenwich	14,312	Adult Services	1	Head of Adult Services	\$ 36.63	No			35	MLS	Yes	No
East Greenwich Free Library	East Greenwich	14,312	Adult Services	1	Reference Librarian	\$ 22.77	No			13	MLS	No	No
East Greenwich Free Library	East Greenwich	14,312	Adult Services	1	Reference Librarian	\$ 19.00	No			11	MLS	No	No
East Greenwich Free Library	East Greenwich	14,312	Borrower Services	1	Circulation Clerk	\$ 15.66	No			24.5	HS Diploma	No	No
East Greenwich Free Library	East Greenwich	14,312	Borrower Services	1	Circulation Clerk	\$ 15.00	No			25.5	HS Diploma	No	No
East Greenwich Free Library	East Greenwich	14,312	Borrower Services	1	Circulation Clerk	\$ 15.00	No			13.25	HS Diploma	No	No
East Greenwich Free Library	East Greenwich	14,312	Borrower Services	1	Circulation Clerk	\$ 15.00	No			25.25	HS Diploma	No	No
East Greenwich Free Library	East Greenwich	14,312	Children's Services	1	Head of Children's Services	\$ 32.43	No			35	MLS	Yes	No
East Greenwich Free Library	East Greenwich	14,312	Children's Services	1	Children's Librarian	\$ 25.14	No			10.5	MLS	No	No
East Greenwich Free Library	East Greenwich	14,312	Children's Services	1	Children's Librarian	\$ 25.83	No			13	MLS	No	No
East Greenwich Free Library	East Greenwich	14,312	Collection Management	1	Processing Clerk	\$ 15.00	No			12	HS Diploma	No	No
East Greenwich Free Library	East Greenwich	14,312	Director	1	Director	\$ 47.70	No	\$ 86,814	Yes	35	MLS	Yes	No
East Greenwich Free Library	East Greenwich	14,312	Facilities Maintenance	1	Custodian	\$ 15.00	No			18	HS Diploma	No	No
East Greenwich Free Library	East Greenwich	14,312	Information Technology	1	Head of Circulation/IT Technician	\$ 24.73	No			35	Bachelor's	Yes	No
East Greenwich Free Library	East Greenwich	14,312	Youth Services (Children & Teen)	1	Children's Services Librarian/Adult & Teen Programming Librarian	\$ 25.75	No			20	MLS	No	No
East Providence Public Library	East Providence	47,139	Administrative Staff	1	Administrative Assistant	\$ 30.05	Yes	\$ 54,693		35	HS Diploma	No	No
East Providence Public Library	East Providence	47,139	Adult Services	1	Public Services Librarian	\$ 37.19	Yes	\$ 67,678		35	MLS	Yes	No
East Providence Public Library	East Providence	47,139	Adult Services	1	Head of Reference Services	\$ 41.97	Yes	\$ 76,382		35	MLS	Yes	No
East Providence Public Library	East Providence	47,139	Adult Services	1	Fuller Assistant	\$ 28.66	Yes	\$ 52,153		35	HS Diploma	Yes	No
East Providence Public Library	East Providence	47,139	Adult Services	3	Librarian	\$ 20.00	No			19	Bachelor's	No	No
East Providence Public Library	East Providence	47,139	Assistant Director	1	Assistant Director	\$ 43.82	Yes	\$ 79,753		35	MLS	Yes	No
East Providence Public Library	East Providence	47,139	Borrower Services	1	Circulation Coordinator	\$ 28.66	Yes	\$ 52,153		35	HS Diploma	Yes	No
East Providence Public Library	East Providence	47,139	Borrower Services	6	Library Aide	\$ 26.33	Yes	\$ 47,915		35	HS Diploma	No	No
East Providence Public Library	East Providence	47,139	Borrower Services	2	Library Aide	\$ 17.00	No			19	HS Diploma	No	No
East Providence Public Library	East Providence	47,139	Branch Manager	1	Coordinator of Learning and Discovery	\$ 37.19	Yes	\$ 67,678		35	Bachelor's	Yes	No
East Providence Public Library	East Providence	47,139	Branch Manager	1	Branch Manager	\$ 37.19	Yes	\$ 67,678		35	MLS	Yes	No
East Providence Public Library	East Providence	47,139	Youth Services (Children & Teen)	1	Youth Services Coordinator	\$ 38.62	Yes	\$ 70,293		35	MLS	Yes	No
East Providence Public Library	East Providence	47,139	Children's Services	1	Youth Services Librarian	\$ 37.19	Yes	\$ 67,678		35	MLS	Yes	No
East Providence Public Library	East Providence	47,139	Children's Services	1	Youth Services Assistant	\$ 27.57	Yes	\$ 50,177		35	HS Diploma	No	No
East Providence Public Library	East Providence	47,139	Children's Services	1	Fuller Aide	\$ 15.00	No			19	HS Diploma	No	No
East Providence Public Library	East Providence	47,139	Collection Management	1	Cataloging & Acquisitions Librarian	\$ 37.19	Yes	\$ 67,678		35	MLS	Yes	No
East Providence Public Library	East Providence	47,139	Digital Services	1	Systems Librarian	\$ 37.19	Yes	\$ 67,678		35	MLS	No	No
East Providence Public Library	East Providence	47,139	Director	1	Library Director	\$ 51.94	Yes	\$ 94,524	No	35	MLS	Yes	No
East Providence Public Library	East Providence	47,139	Educator	1	Library Coordinator	\$ 35.60	Yes	\$ 64,800		35	Master's	Yes	No
East Providence Public Library	East Providence	47,139	Educator	1	ESOL Teacher	\$ 28.00	No			19	Master's	No	No
East Providence Public Library	East Providence	47,139	Facilities Maintenance	1	Custodian	\$ 26.52	Yes	\$ 55,166		40	HS Diploma	Yes	No
East Providence Public Library	East Providence	47,139	Facilities Maintenance	1	Custodian	\$ 15.00	No			19	HS Diploma	No	No
East Providence Public Library	East Providence	47,139	Teen Services	1	Teen Services Librarian	\$ 37.19	Yes	\$ 67,678		35	MLS	No	No
Exeter Public Library	Exeter	6,460	Borrower Services	4	Library Assistant	\$ 17.68	No			15	HS Diploma	No	No
Exeter Public Library	Exeter	6,460	Director	1	Library Director	\$ 39.18	Yes	\$ 71,299	No	35	MLS	Yes	No
Exeter Public Library	Exeter	6,460	Youth Services (Children & Teen)	1	Youth Services Librarian	\$ 27.47	Yes	\$ 50,000		35	MLS	No	No
Libraries of Foster	Foster	4,469	Assistant Director	1	Assistant Director	\$ 20.21	No			16	Bachelor's	Yes	No
Libraries of Foster	Foster	4,469	Borrower Services	1	Library Assistant	\$ 15.00	No			22	HS Diploma	No	No
Libraries of Foster	Foster	4,469	Borrower Services	2	Library Assistant	\$ 15.00	No			12	HS Diploma	No	No
Libraries of Foster	Foster	4,469	Borrower Services	1	Library Assistant	\$ 15.00	No			4	HS Diploma	No	No
Libraries of Foster	Foster	4,469	Borrower Services	1	Library Assistant	\$ 15.00	No			9	HS Diploma	No	No
Libraries of Foster	Foster	4,469	Borrower Services	1	Library Assistant	\$ 15.00	No			6	HS Diploma	No	No
Libraries of Foster	Foster	4,469	Children's Services	1	Youth Services Coordinator	\$ 19.56	No			14	Bachelor's	No	No
Libraries of Foster	Foster	4,469	Children's Services	1	Children's Librarian	\$ 15.00	No			16	Bachelor's	No	No
Libraries of Foster	Foster	4,469	Director	1	Director	\$ 25.00	Yes	\$ 52,000	No	40	MLS	Yes	No
Libraries of Foster	Foster	4,469	Facilities Maintenance	1	Maintenance	\$ 32.77	No			2	HS Diploma	No	No
Glocester Manton Free Public Library	Glocester	4,489	Borrower Services	1	Circulation Assistant	\$ 15.00	No			15	HS Diploma	No	No
Glocester Manton Free Public Library	Glocester	4,489	Borrower Services	1	Circulation Head	\$ 16.50	No			12	HS Diploma	No	No
Glocester Manton Free Public Library	Glocester	4,489	Borrower Services	1	Circulation Assistant	\$ 15.00	No			10	HS Diploma	No	No
Glocester Manton Free Public Library	Glocester	4,489	Collection Management	1	Cataloger	\$ 17.60	No			12	HS Diploma	Yes	No
Glocester Manton Free Public Library	Glocester	4,489	Director	1	Director	\$ 31.59	Yes	\$ 65,700	No	40	MLS	Yes	No
Glocester Manton Free Public Library	Glocester	4,489	Facilities Maintenance	1	Janitor	\$ 25.00	Yes	\$ 3,900		3	HS Diploma	No	No
Glocester Manton Free Public Library	Glocester	4,489	Youth Services (Children & Teen)	1	Youth Services Assistant	\$ 21.00	Yes	\$ 27,300		25	Bachelor's	Yes	No
Harmony Library	Glocester	5,485	Administrative Staff	1	Bookkeeper	\$ 25.00	No			6	Other	No	No
Harmony Library	Glocester	5,485	Adult Services	1	Adult Services Librarian	\$ 24.16	No			13	MLS	Yes	No
Harmony Library	Glocester	5,485	Borrower Services	1	Circulation Head	\$ 18.40	No			15.5	HS Diploma	Yes	No
Harmony Library	Glocester	5,485	Borrower Services	1	Circulation Assistant	\$ 17.56	No			16	HS Diploma	Yes	No
Harmony Library	Glocester	5,485	Borrower Services	1	Circulation Assistant	\$ 16.00	No			15	HS Diploma	No	No

Staff Positions by Library FY2025

Location	Municipality	Population	Job Category	Number of Staff	Position Title	Hourly Rate	Hourly Rate Calculated by OLIS	Annual Salary	Annual Salary Calculated by OLIS	Hours per Week	Degree Required	Supervisor?	Vacant?
Harmony Library	Glocester	5,485	Borrower Services	1	Circulation Assistant	\$ 16.00	No			7	HS Diploma	No	No
Harmony Library	Glocester	5,485	Collection Management	1	Cataloger	\$ 18.40	No			14	HS Diploma	Yes	No
Harmony Library	Glocester	5,485	Facilities Maintenance	1	Janitor	\$ 26.67	Yes	\$ 4,160		3	HS Diploma	No	No
Harmony Library	Glocester	5,485	Information Technology	1	Reference and Technology Librarian	\$ 29.84	No			17	MLS	Yes	No
Harmony Library	Glocester	5,485	Page	1	Page	\$ 15.00	No			6	None	No	No
Harmony Library	Glocester	5,485	Youth Services (Children & Teen)	1	Youth Services Librarian	\$ 29.40	Yes	\$ 53,500		35	MLS	Yes	No
Ashaway Free Library	Hopkinton	3,778	Administrative Staff	1	Bookkeeper	\$ 21.50	No			2	HS Diploma	No	No
Ashaway Free Library	Hopkinton	3,778	Borrower Services	1	Staff Librarian	\$ 16.29	No			15	HS Diploma	No	No
Ashaway Free Library	Hopkinton	3,778	Borrower Services	1	Staff Librarian	\$ 15.00	No			28	HS Diploma	No	No
Ashaway Free Library	Hopkinton	3,778	Children's Services	1	Staff Librarian	\$ 15.00	No			10	HS Diploma	No	No
Ashaway Free Library	Hopkinton	3,778	Digital Services	1	Technology Tutor	\$ 25.00	No			2	HS Diploma	No	No
Ashaway Free Library	Hopkinton	3,778	Director	1	Library Director	\$ 27.38	No	\$ 39,865	Yes	28	MLS	Yes	No
Langworthy Public Library	Hopkinton	4,620	Adult Services	1	Chief Library Associate	\$ 15.25	No	\$ 9,516		12	Bachelor's	No	No
Langworthy Public Library	Hopkinton	4,620	Adult Services	1	Library Associate	\$ 15.00	No	\$ 11,700		15	HS Diploma	No	No
Langworthy Public Library	Hopkinton	4,620	Adult Services	2	Library Associate	\$ 15.00	No	\$ 3,120		4	HS Diploma	No	No
Langworthy Public Library	Hopkinton	4,620	Children's Services	1	Children's Library Associate	\$ 15.00	No	\$ 11,700		15	HS Diploma	No	No
Langworthy Public Library	Hopkinton	4,620	Director	1	Director	\$ 30.00	No	\$ 44,640	No	31	MLS	Yes	No
Jamestown Philomenian Library	Jamestown	5,559	Adult Services	1	Outreach Librarian	\$ 23.69	No			40	MLS	Yes	No
Jamestown Philomenian Library	Jamestown	5,559	Borrower Services	1	Circulation Supervisor	\$ 19.11	No			35	HS Diploma	Yes	No
Jamestown Philomenian Library	Jamestown	5,559	Borrower Services	1	Library Assistant	\$ 18.03	No			14	HS Diploma	No	No
Jamestown Philomenian Library	Jamestown	5,559	Borrower Services	1	Library Assistant	\$ 18.03	No			19	HS Diploma	No	No
Jamestown Philomenian Library	Jamestown	5,559	Borrower Services	1	Library Assistant	\$ 18.03	No			10	HS Diploma	No	No
Jamestown Philomenian Library	Jamestown	5,559	Borrower Services	1	Library Assistant	\$ 16.97	No			19	HS Diploma	No	No
Jamestown Philomenian Library	Jamestown	5,559	Borrower Services	1	Library Assistant	\$ 15.91	No			13	HS Diploma	No	No
Jamestown Philomenian Library	Jamestown	5,559	Borrower Services	1	Library Assistant	\$ 15.00	No			12	HS Diploma	No	No
Jamestown Philomenian Library	Jamestown	5,559	Director	1	Library Director	\$ 40.61	No	\$ 84,469	Yes	40	MLS	Yes	No
Jamestown Philomenian Library	Jamestown	5,559	Page	1	Library Page	\$ 14.00	No			12	None	No	Yes
Jamestown Philomenian Library	Jamestown	5,559	Youth Services (Children & Teen)	1	Youth Services Librarian	\$ 26.29	No			40	MLS	Yes	No
Jamestown Philomenian Library	Jamestown	5,559	Youth Services (Children & Teen)	1	Youth Services Assistant	\$ 17.50	No			40	Bachelor's	No	No
Marian J. Mohr Memorial Library	Johnston	29,568	Adult Services	1	Public Services Librarian	\$ 20.00	No			35	MLS	Yes	No
Marian J. Mohr Memorial Library	Johnston	29,568	Adult Services	1	Librarian	\$ 20.00	No			2	MLS	No	No
Marian J. Mohr Memorial Library	Johnston	29,568	Borrower Services	1	Desk Assistant / Administrative Assistant	\$ 20.88	No			35	None	No	No
Marian J. Mohr Memorial Library	Johnston	29,568	Borrower Services	1	Desk Assistant / Program Specialist	\$ 21.88	No			35	None	No	No
Marian J. Mohr Memorial Library	Johnston	29,568	Borrower Services	1	Library Assistant	\$ 15.00	No			12	None	No	No
Marian J. Mohr Memorial Library	Johnston	29,568	Borrower Services	2	Library Assistant	\$ 15.00	No			18	None	No	No
Marian J. Mohr Memorial Library	Johnston	29,568	Children's Services	1	Children's Librarian	\$ 25.00	No			35	MLS	Yes	No
Marian J. Mohr Memorial Library	Johnston	29,568	Children's Services	1	Children's Assistant	\$ 15.00	No			12	None	No	No
Marian J. Mohr Memorial Library	Johnston	29,568	Children's Services	1	Children's Assistant	\$ 15.00	No			18	None	No	No
Marian J. Mohr Memorial Library	Johnston	29,568	Collection Management	1	Aide / Technical Assistant	\$ 15.00	No			12	None	No	No
Marian J. Mohr Memorial Library	Johnston	29,568	Collection Management	2	Library Assistant	\$ 15.00	No			18	None	No	No
Marian J. Mohr Memorial Library	Johnston	29,568	Director	1	Library Director	\$ 35.71	Yes	\$ 65,000	No	35	MLS	Yes	No
Marian J. Mohr Memorial Library	Johnston	29,568	Page	1	Library Aide	\$ 15.00	No			12	None	No	No
Marian J. Mohr Memorial Library	Johnston	29,568	Teen Services	1	Young Adult Librarian	\$ 20.00	No			35	MLS	Yes	No
Lincoln Public Library	Lincoln	22,529	Administrative Staff	1	Secretary Bookkeeper	\$ 24.06	No			35	Other	No	No
Lincoln Public Library	Lincoln	22,529	Adult Services	1	Reference Librarian	\$ 32.00	No			35	MLS	No	No
Lincoln Public Library	Lincoln	22,529	Adult Services	1	Reference Librarian	\$ 25.00	No			8	MLS	No	No
Lincoln Public Library	Lincoln	22,529	Assistant Director	1	Assistant Director	\$ 37.77	Yes	\$ 68,750		35	MLS	Yes	No
Lincoln Public Library	Lincoln	22,529	Borrower Services	1	Tech III PS	\$ 23.44	No			35	HS Diploma	Yes	No
Lincoln Public Library	Lincoln	22,529	Borrower Services	3	Tech II PS	\$ 19.84	No			35	HS Diploma	No	No
Lincoln Public Library	Lincoln	22,529	Borrower Services	1	Tech II PS	\$ 18.17	No			35	HS Diploma	No	Yes
Lincoln Public Library	Lincoln	22,529	Borrower Services	1	Circulation Assistant	\$ 17.00	No			19	None	No	No
Lincoln Public Library	Lincoln	22,529	Borrower Services	1	Circulation Assistant	\$ 17.00	No			19.5	None	No	No
Lincoln Public Library	Lincoln	22,529	Children's Services	1	Children's Librarian	\$ 33.60	No			35	MLS	Yes	No
Lincoln Public Library	Lincoln	22,529	Children's Services	1	Children's Librarian	\$ 25.00	No			14	MLS	No	No
Lincoln Public Library	Lincoln	22,529	Children's Services	1	Children's Librarian	\$ 25.00	No			4.5	MLS	No	No
Lincoln Public Library	Lincoln	22,529	Children's Services	1	Children's Librarian	\$ 25.00	No			8	MLS	No	No
Lincoln Public Library	Lincoln	22,529	Collection Management	1	Tech III TS	\$ 23.44	No			35	HS Diploma	No	No
Lincoln Public Library	Lincoln	22,529	Director	1	Director	\$ 45.05	Yes	\$ 82,000	No	35	MLS	Yes	No
Lincoln Public Library	Lincoln	22,529	Facilities Maintenance	1	Custodian	\$ 22.62	No			20	None	No	No
Lincoln Public Library	Lincoln	22,529	Information Technology	1	Technology Librarian	\$ 34.85	No			35	MLS	No	No
Lincoln Public Library	Lincoln	22,529	Page	3	Page	\$ 15.00	No			9	None	No	No
Brownell Library, Home of Little Compton	Little Compton	3,616	Borrower Services	1	Circulation Associate/Technical Services	\$ 21.30	No			20.5	HS Diploma	No	No
Brownell Library, Home of Little Compton	Little Compton	3,616	Borrower Services	1	Circulation Associate/Marketing & Social Media	\$ 19.10	No			27.5	HS Diploma	No	No
Brownell Library, Home of Little Compton	Little Compton	3,616	Director	1	Director	\$ 35.09	No	\$ 63,864	Yes	35	MLS	Yes	No
Brownell Library, Home of Little Compton	Little Compton	3,616	Youth Services (Children & Teen)	1	Youth Services Librarian	\$ 28.30	No			35	MLS	Yes	No
Middletown Public Library	Middletown	17,075	Administrative Staff	1	Admin & Finance Assistant	\$ 18.50	No			15	Bachelor's	No	No
Middletown Public Library	Middletown	17,075	Adult Services	1	Supervising Librarian of Adult Services	\$ 30.67	No			35	MLS	Yes	No
Middletown Public Library	Middletown	17,075	Adult Services	1	Programming & Marketing Assistant	\$ 16.73	No			25	HS Diploma	No	No
Middletown Public Library	Middletown	17,075	Assistant Director	1	Assistant Director & Technology Coordinator	\$ 29.53	Yes	\$ 53,745		35	Bachelor's	Yes	No
Middletown Public Library	Middletown	17,075	Borrower Services	1	Borrower Services Supervisor	\$ 21.00	No			35	Bachelor's	Yes	No
Middletown Public Library	Middletown	17,075	Borrower Services	1	Library Assistant	\$ 16.73	No			25	HS Diploma	No	No
Middletown Public Library	Middletown	17,075	Borrower Services	1	Library Assistant	\$ 16.49	No			20	HS Diploma	No	No
Middletown Public Library	Middletown	17,075	Borrower Services	1	Library Assistant	\$ 16.24	No			25	HS Diploma	No	No
Middletown Public Library	Middletown	17,075	Borrower Services	1	Library Assistant	\$ 16.00	No			25	HS Diploma	No	No

Staff Positions by Library FY2025

Location	Municipality	Population	Job Category	Number of Staff	Position Title	Hourly Rate	Hourly Rate Calculated by OLIS	Annual Salary	Annual Salary Calculated by OLIS	Hours per Week	Degree Required	Supervisor?	Vacant?
Middletown Public Library	Middletown	17,075	Collection Management	1	Tech Services Assistant	\$ 16.24	No			20	HS Diploma	No	No
Middletown Public Library	Middletown	17,075	Director	1	Library Director	\$ 47.12	Yes	\$ 85,750	No	35	MLS	Yes	No
Middletown Public Library	Middletown	17,075	Page	2	Library Page	\$ 15.00	No			10	None	No	No
Middletown Public Library	Middletown	17,075	Youth Services (Children & Teen)	1	Supervising Librarian of Youth Services	\$ 30.67	No			35	MLS	Yes	No
Middletown Public Library	Middletown	17,075	Youth Services (Children & Teen)	2	Youth Services Assistant	\$ 16.24	No			25	HS Diploma	No	No
Maury Looitens Memorial Library	Narragansett	14,532	Adult Services	1	Patron Services Librarian	\$ 28.00	Yes	\$ 58,240		40	MLS	Yes	No
Maury Looitens Memorial Library	Narragansett	14,532	Adult Services	1	Reference and Information Services Librarian	\$ 29.04	Yes	\$ 60,403		40	MLS	Yes	No
Maury Looitens Memorial Library	Narragansett	14,532	Borrower Services	4	Library Technician	\$ 15.00	No			19.5	HS Diploma	No	No
Maury Looitens Memorial Library	Narragansett	14,532	Borrower Services	1	Library Technician	\$ 15.00	No			12	HS Diploma	No	No
Maury Looitens Memorial Library	Narragansett	14,532	Borrower Services	1	Library Technician	\$ 15.00	No			10	HS Diploma	Yes	No
Maury Looitens Memorial Library	Narragansett	14,532	Borrower Services	1	Library Technician	\$ 15.00	No			18	HS Diploma	No	No
Maury Looitens Memorial Library	Narragansett	14,532	Borrower Services	1	Library Technician	\$ 15.63	No			21	HS Diploma	No	No
Maury Looitens Memorial Library	Narragansett	14,532	Borrower Services	1	Circulation Supervisor	\$ 16.52	No			22.5	Bachelor's	Yes	No
Maury Looitens Memorial Library	Narragansett	14,532	Borrower Services	2	Library Technician	\$ 16.64	No			9.5	HS Diploma	No	No
Maury Looitens Memorial Library	Narragansett	14,532	Borrower Services	1	Library Technician	\$ 18.66	No			11.25	HS Diploma	No	No
Maury Looitens Memorial Library	Narragansett	14,532	Director	1	Library Director	\$ 50.54	Yes	\$ 105,123	No	40	MLS	Yes	No
Maury Looitens Memorial Library	Narragansett	14,532	Educator	1	Makerspace Librarian	\$ 18.50	Yes	\$ 38,480		40	Master's	Yes	No
Maury Looitens Memorial Library	Narragansett	14,532	Page	1	Library Page	\$ 14.74	No			20	None	No	No
Maury Looitens Memorial Library	Narragansett	14,532	Youth Services (Children & Teen)	1	Children's Associate	\$ 26.93	Yes	\$ 49,017		35	HS Diploma	Yes	No
Maury Looitens Memorial Library	Narragansett	14,532	Youth Services (Children & Teen)	1	Youth Services Librarian	\$ 24.81	Yes	\$ 51,605		40	MLS	Yes	No
Island Free Library	New Shoreham	1,410	Adult Services	1	Adult Programming and Community Outreach	\$ 21.00	No			30	Master's	No	Yes
Island Free Library	New Shoreham	1,410	Borrower Services	1	Circulation Clerk	\$ 22.07	No			20	HS Diploma	No	No
Island Free Library	New Shoreham	1,410	Borrower Services	1	Circulation Clerk	\$ 26.23	No			40	HS Diploma	No	No
Island Free Library	New Shoreham	1,410	Children's Services	1	Children's Assistant	\$ 22.07	No			20	HS Diploma	No	Yes
Island Free Library	New Shoreham	1,410	Collection Management	1	Cataloging Librarian and Archivist	\$ 25.57	Yes	\$ 53,186		40	MLS	Yes	No
Island Free Library	New Shoreham	1,410	Director	1	Director	\$ 40.28	Yes	\$ 83,776	No	40	MLS	Yes	No
Island Free Library	New Shoreham	1,410	Youth Services (Children & Teen)	1	Youth Services Librarian	\$ 23.36	No			40	MLS	No	No
Newport Public Library	Newport	25,163	Administrative Staff	1	Office Manager	\$ 26.53	No			35	Bachelor's	No	No
Newport Public Library	Newport	25,163	Administrative Staff	1	Administrative Assistant	\$ 20.88	No			20	Bachelor's	No	No
Newport Public Library	Newport	25,163	Administrative Staff	1	Systems Technician	\$ 27.11	No			15	HS Diploma	No	No
Newport Public Library	Newport	25,163	Adult Services	1	Assistant Director/Head of Adult Services	\$ 39.66	No			35	MLS	Yes	No
Newport Public Library	Newport	25,163	Adult Services	1	Reference Librarian	\$ 31.38	No			35	MLS	No	No
Newport Public Library	Newport	25,163	Adult Services	1	Reference Librarian	\$ 27.84	No			35	MLS	No	No
Newport Public Library	Newport	25,163	Adult Services	1	Reference Librarian	\$ 27.04	No			35	MLS	No	No
Newport Public Library	Newport	25,163	Adult Services	1	Reference Librarian	\$ 26.53	No			15	Bachelor's	No	No
Newport Public Library	Newport	25,163	Borrower Services	1	Head of Borrower Services	\$ 31.69	No			35	Bachelor's	Yes	No
Newport Public Library	Newport	25,163	Borrower Services	1	Library Aide	\$ 19.50	No			35	HS Diploma	No	No
Newport Public Library	Newport	25,163	Borrower Services	1	Library Aide	\$ 18.75	No			35	HS Diploma	No	No
Newport Public Library	Newport	25,163	Borrower Services	1	Library Aide	\$ 18.91	No			26	HS Diploma	No	No
Newport Public Library	Newport	25,163	Borrower Services	1	Library Aide	\$ 18.91	No			25	HS Diploma	No	No
Newport Public Library	Newport	25,163	Borrower Services	1	Library Aide - Borrower Services/Collection Mgmt	\$ 17.84	No			35	HS Diploma	No	No
Newport Public Library	Newport	25,163	Children's Services	1	Librarian	\$ 31.68	No			35	MLS	No	No
Newport Public Library	Newport	25,163	Children's Services	1	Library Associate	\$ 18.75	No			35	Bachelor's	No	No
Newport Public Library	Newport	25,163	Children's Services	1	Librarian	\$ 26.53	No			35	MLS	No	No
Newport Public Library	Newport	25,163	Collection Management	1	Head of Collection Management	\$ 34.24	No			35	MLS	Yes	No
Newport Public Library	Newport	25,163	Collection Management	1	Lead Cataloger	\$ 28.45	No			35	MLS	No	No
Newport Public Library	Newport	25,163	Collection Management	1	Cataloging Assistant	\$ 23.50	No			35	Bachelor's	No	No
Newport Public Library	Newport	25,163	Director	1	Library Director	\$ 53.29	No	\$ 96,988	Yes	35	MLS	Yes	No
Newport Public Library	Newport	25,163	Facilities Maintenance	1	Facilities Manager	\$ 45.79	No			37.5	HS Diploma	Yes	No
Newport Public Library	Newport	25,163	Facilities Maintenance	1	Custodian	\$ 26.33	No			37.5	HS Diploma	No	No
Newport Public Library	Newport	25,163	Facilities Maintenance	1	Custodian	\$ 19.69	No			37.5	HS Diploma	No	No
Newport Public Library	Newport	25,163	Facilities Maintenance	1	Custodian/Page	\$ 15.91	No			29	HS Diploma	No	No
Newport Public Library	Newport	25,163	Page	1	Page	\$ 15.00	No			8	HS Diploma	No	No
Newport Public Library	Newport	25,163	Teen Services	1	Library Associate	\$ 21.50	No			35	Bachelor's	No	No
Newport Public Library	Newport	25,163	Teen Services	1	Library Associate	\$ 20.88	No			20	Bachelor's	No	No
Newport Public Library	Newport	25,163	Youth Services (Children & Teen)	1	Head of Youth Services	\$ 38.41	No			35	MLS	Yes	No
Davisville Free Library	North Kingstown	5,991	Adult Services	1	Librarian	\$ 18.00	No			13	MLS	Yes	No
Davisville Free Library	North Kingstown	5,991	Children's Services	1	Library Assistant	\$ 16.00	No			12	Bachelor's	Yes	No
Davisville Free Library	North Kingstown	5,991	Director	1	Director	\$ 24.00	No	\$ 24,336	Yes	19.5	MLS	Yes	No
Davisville Free Library	North Kingstown	5,991	Page	1	Library Page	\$ 15.00	No			9	None	No	No
North Kingstown Free Library	North Kingstown	19,821	Adult Services	1	Coordinator, Outreach	\$ 29.61	No			23	MLS	No	No
North Kingstown Free Library	North Kingstown	19,821	Adult Services	1	Coordinator, Reference	\$ 35.17	Yes	\$ 64,002		35	MLS	Yes	No
North Kingstown Free Library	North Kingstown	19,821	Adult Services	1	Coordinator, Adult Fiction	\$ 35.17	Yes	\$ 64,002		35	MLS	No	No
North Kingstown Free Library	North Kingstown	19,821	Adult Services	1	Assistant Librarian	\$ 34.15	Yes	\$ 62,151		35	MLS	No	No
North Kingstown Free Library	North Kingstown	19,821	Assistant Director	1	Assistant Director	\$ 46.16	Yes	\$ 84,007		35	MLS	Yes	No
North Kingstown Free Library	North Kingstown	19,821	Borrower Services	1	Library Technician	\$ 22.13	Yes	\$ 40,263		35	HS Diploma	No	No
North Kingstown Free Library	North Kingstown	19,821	Borrower Services	1	Circulation Manager	\$ 25.05	Yes	\$ 45,585		35	HS Diploma	Yes	No
North Kingstown Free Library	North Kingstown	19,821	Borrower Services	1	Library Technician	\$ 26.70	Yes	\$ 48,593		35	HS Diploma	No	No
North Kingstown Free Library	North Kingstown	19,821	Borrower Services	1	Library Technician	\$ 21.24	No			18	HS Diploma	No	No
North Kingstown Free Library	North Kingstown	19,821	Borrower Services	1	Library Tech	\$ 24.97	No			18	HS Diploma	No	No
North Kingstown Free Library	North Kingstown	19,821	Borrower Services	1	Senior Library Clerk	\$ 23.94	Yes	\$ 43,576		35	HS Diploma	No	No
North Kingstown Free Library	North Kingstown	19,821	Borrower Services	1	Library Clerk	\$ 23.94	No			25	HS Diploma	No	No
North Kingstown Free Library	North Kingstown	19,821	Collection Management	1	Assistant Librarian	\$ 31.52	Yes	\$ 57,370		35	MLS	No	No
North Kingstown Free Library	North Kingstown	19,821	Director	1	Director	\$ 51.00	Yes	\$ 92,820	No	35	MLS	Yes	No

Staff Positions by Library FY2025

Location	Municipality	Population	Job Category	Number of Staff	Position Title	Hourly Rate	Hourly Rate Calculated by OLIS	Annual Salary	Annual Salary Calculated by OLIS	Hours per Week	Degree Required	Supervisor?	Vacant?
North Kingstown Free Library	North Kingstown	19,821	Facilities Maintenance	1	Morning Custodian	\$ 24.86	No			24	None	No	No
North Kingstown Free Library	North Kingstown	19,821	Facilities Maintenance	1	Evening Custodian	\$ 23.85	No			22	None	No	No
North Kingstown Free Library	North Kingstown	19,821	Teen Services	1	Assistant Librarian, young adult	\$ 26.15	Yes	\$ 47,594		35	MLS	No	No
North Kingstown Free Library	North Kingstown	19,821	Youth Services (Children & Teen)	1	Youth Services Coordinator	\$ 29.62	Yes	\$ 53,901		35	MLS	Yes	No
Willett Free Library	North Kingstown	1,920	Children's Services	2	Library Technician	\$ 19.00	No			15.5	HS Diploma	No	No
Willett Free Library	North Kingstown	1,920	Director	1	Director	\$ 30.00	No	\$ 39,000	Yes	25	MLS	Yes	No
Mayor Salvatore Mancini Union Free Library	North Providence	34,114	Administrative Staff	1	Administrative Assistant	\$ 19.17	Yes	\$ 34,892		35	Bachelor's	Yes	No
Mayor Salvatore Mancini Union Free Library	North Providence	34,114	Assistant Director	1	Deputy Director	\$ 36.68	Yes	\$ 66,762		35	Bachelor's	Yes	No
Mayor Salvatore Mancini Union Free Library	North Providence	34,114	Borrower Services	1	Circulation Manager	\$ 26.92	Yes	\$ 48,994		35	Bachelor's	Yes	No
Mayor Salvatore Mancini Union Free Library	North Providence	34,114	Borrower Services	1	Assistant Circulation Manager	\$ 23.47	Yes	\$ 42,716		35	Bachelor's	Yes	No
Mayor Salvatore Mancini Union Free Library	North Providence	34,114	Borrower Services	1	Circulation Supervisor	\$ 17.00	No			19	HS Diploma	Yes	No
Mayor Salvatore Mancini Union Free Library	North Providence	34,114	Borrower Services	10	Circulation Assistants	\$ 15.00	No			19	Other	No	No
Mayor Salvatore Mancini Union Free Library	North Providence	34,114	Collection Management	1	Cataloging Librarian	\$ 30.26	Yes	\$ 55,082		35	MLS	Yes	No
Mayor Salvatore Mancini Union Free Library	North Providence	34,114	Director	1	Director	\$ 45.28	Yes	\$ 82,402	No	35	MLS	Yes	No
Mayor Salvatore Mancini Union Free Library	North Providence	34,114	Facilities Maintenance	1	Maintenance Custodian	\$ 17.31	Yes	\$ 23,400		26	HS Diploma	No	No
Mayor Salvatore Mancini Union Free Library	North Providence	34,114	Information Technology	1	Head of Information and Technology	\$ 32.34	Yes	\$ 58,864		35	MLS	Yes	No
Mayor Salvatore Mancini Union Free Library	North Providence	34,114	Information Technology	1	Technology Assistant	\$ 18.54	Yes	\$ 25,066		26	Bachelor's	Yes	No
Mayor Salvatore Mancini Union Free Library	North Providence	34,114	Information Technology	2	Reference Associates	\$ 15.00	No			19	Other	No	No
Mayor Salvatore Mancini Union Free Library	North Providence	34,114	Youth Services (Children & Teen)	1	Coordinator of Youth Services	\$ 33.55	Yes	\$ 61,070		35	MLS	Yes	No
Mayor Salvatore Mancini Union Free Library	North Providence	34,114	Youth Services (Children & Teen)	1	Assistant Coordinator of Youth Services	\$ 20.06	Yes	\$ 27,117		26	Bachelor's	Yes	No
Mayor Salvatore Mancini Union Free Library	North Providence	34,114	Youth Services (Children & Teen)	4	Youth Services Associates	\$ 15.00	No			19	Other	No	No
North Smithfield Public Library	North Smithfield	12,588	Adult Services	1	Reference Librarian	\$ 26.43	Yes	\$ 48,102		35	MLS	No	No
North Smithfield Public Library	North Smithfield	12,588	Borrower Services	1	Circulation Staff	\$ 15.61	No			20	HS Diploma	No	No
North Smithfield Public Library	North Smithfield	12,588	Borrower Services	1	Circulation Staff	\$ 16.42	No			19	HS Diploma	No	No
North Smithfield Public Library	North Smithfield	12,588	Borrower Services	1	Circulation Staff	\$ 17.92	No			15	HS Diploma	No	No
North Smithfield Public Library	North Smithfield	12,588	Borrower Services	1	Circulation Staff	\$ 16.85	No			6	HS Diploma	No	No
North Smithfield Public Library	North Smithfield	12,588	Borrower Services	1	Circulation Staff	\$ 16.00	No			21	HS Diploma	No	No
North Smithfield Public Library	North Smithfield	12,588	Collection Management	1	Cataloging/Circulation Head	\$ 24.48	No			30	HS Diploma	No	No
North Smithfield Public Library	North Smithfield	12,588	Director	1	Director	\$ 44.01	Yes	\$ 91,535	No	40	MLS	Yes	No
North Smithfield Public Library	North Smithfield	12,588	Youth Services (Children & Teen)	1	Youth Services Librarian/Assistant Director	\$ 38.49	Yes	\$ 70,060		35	MLS	Yes	No
Pawtucket Public Library	Pawtucket	75,604	Administrative Staff	1	Library Secretary	\$ 26.88	Yes	\$ 55,906		40	HS Diploma	No	No
Pawtucket Public Library	Pawtucket	75,604	Administrative Staff	1	Passport Acceptance Officer	\$ 22.88	Yes	\$ 28,559		24	HS Diploma	No	No
Pawtucket Public Library	Pawtucket	75,604	Adult Services	1	Coordinator of Adult Services	\$ 40.01	Yes	\$ 72,816		35	HS Diploma	Yes	No
Pawtucket Public Library	Pawtucket	75,604	Adult Services	2	Reference Librarian	\$ 35.21	Yes	\$ 64,084		35	MLS	Yes	No
Pawtucket Public Library	Pawtucket	75,604	Adult Services	1	Reference Librarian	\$ 34.52	Yes	\$ 34,106		19	MLS	Yes	No
Pawtucket Public Library	Pawtucket	75,604	Adult Services	1	Reference Librarian	\$ 35.21	Yes	\$ 34,788		19	MLS	Yes	No
Pawtucket Public Library	Pawtucket	75,604	Adult Services	1	Library Aide	\$ 16.77	Yes	\$ 16,568		19	HS Diploma	No	Yes
Pawtucket Public Library	Pawtucket	75,604	Adult Services	1	Library Assistant III	\$ 25.01	Yes	\$ 45,524		35	HS Diploma	Yes	No
Pawtucket Public Library	Pawtucket	75,604	Assistant Director	1	Assistant Library Director	\$ 44.78	Yes	\$ 81,503		35	MLS	Yes	No
Pawtucket Public Library	Pawtucket	75,604	Borrower Services	1	Circulation Supervisor	\$ 30.06	Yes	\$ 54,708		35	HS Diploma	Yes	No
Pawtucket Public Library	Pawtucket	75,604	Borrower Services	2	Library Assistant II Circulation	\$ 23.72	Yes	\$ 43,178		35	HS Diploma	Yes	No
Pawtucket Public Library	Pawtucket	75,604	Borrower Services	1	Library Assistant I Circulation	\$ 21.98	Yes	\$ 40,012		35	HS Diploma	Yes	No
Pawtucket Public Library	Pawtucket	75,604	Borrower Services	1	Library Assistant I PT Circulation	\$ 21.07	Yes	\$ 20,820		19	HS Diploma	Yes	No
Pawtucket Public Library	Pawtucket	75,604	Borrower Services	1	Library Aide	\$ 16.77	Yes	\$ 16,568		19	HS Diploma	Yes	No
Pawtucket Public Library	Pawtucket	75,604	Borrower Services	2	Library Bookmobile Op & Clk PT	\$ 25.01	Yes	\$ 24,713		19	HS Diploma	No	No
Pawtucket Public Library	Pawtucket	75,604	Children's Services	1	Coordinator of Children's Services	\$ 40.01	Yes	\$ 72,816		35	MLS	Yes	No
Pawtucket Public Library	Pawtucket	75,604	Children's Services	1	Children's Librarian	\$ 35.21	Yes	\$ 64,084		35	MLS	Yes	No
Pawtucket Public Library	Pawtucket	75,604	Children's Services	1	Children's Librarian	\$ 35.21	Yes	\$ 34,789		19	MLS	Yes	No
Pawtucket Public Library	Pawtucket	75,604	Children's Services	1	Children's Librarian	\$ 33.82	Yes	\$ 33,419		19	MLS	Yes	No
Pawtucket Public Library	Pawtucket	75,604	Children's Services	1	Library Aide	\$ 16.77	Yes	\$ 16,568		19	HS Diploma	No	No
Pawtucket Public Library	Pawtucket	75,604	Collection Management	1	Coordinator of Technical Services	\$ 40.01	Yes	\$ 72,816		35	MLS	Yes	No
Pawtucket Public Library	Pawtucket	75,604	Collection Management	1	Technical Services Librarian	\$ 35.21	Yes	\$ 64,084		35	MLS	Yes	No
Pawtucket Public Library	Pawtucket	75,604	Collection Management	1	Library Assistant II Technical Services	\$ 23.18	Yes	\$ 42,184		35	MLS	Yes	No
Pawtucket Public Library	Pawtucket	75,604	Collection Management	1	Library Assistant I PT Technical Services	\$ 21.27	Yes	\$ 21,019		19	HS Diploma	No	Yes
Pawtucket Public Library	Pawtucket	75,604	Director	1	Library Director	\$ 50.93	Yes	\$ 92,700	No	35	MLS	Yes	No
Pawtucket Public Library	Pawtucket	75,604	Educator	1	ESOL Teacher	\$ 24.79	Yes	\$ 10,312		8	Bachelor's	No	No
Pawtucket Public Library	Pawtucket	75,604	Educator	1	Citizenship Teacher	\$ 26.67	Yes	\$ 4,160		3	Bachelor's	No	No
Pawtucket Public Library	Pawtucket	75,604	Facilities Maintenance	1	Custodian	\$ 20.39	Yes	\$ 42,406		40	None	No	No
Pawtucket Public Library	Pawtucket	75,604	Information Technology	1	Bilingual Computer Tech	\$ 25.01	Yes	\$ 45,524		35	Other	No	No
Pawtucket Public Library	Pawtucket	75,604	Teen Services	1	Teen Librarian	\$ 35.21	Yes	\$ 64,084		35	MLS	Yes	No
Portsmouth Free Public Library	Portsmouth	17,871	Administrative Staff	1	Office Manager	\$ 24.35	Yes	\$ 44,317		35	Bachelor's	No	No
Portsmouth Free Public Library	Portsmouth	17,871	Adult Services	2	Sunday Reference Librarian	\$ 29.00	No			4	MLS	No	No
Portsmouth Free Public Library	Portsmouth	17,871	Assistant Director	1	Assistant Director/Reference Librarian	\$ 32.44	Yes	\$ 59,040		35	MLS	Yes	No
Portsmouth Free Public Library	Portsmouth	17,871	Borrower Services	1	Library Assistant (part time)	\$ 15.70	No			24	Bachelor's	No	No
Portsmouth Free Public Library	Portsmouth	17,871	Borrower Services	1	Library Assistant (part time)	\$ 15.70	No			21	Bachelor's	No	No
Portsmouth Free Public Library	Portsmouth	17,871	Borrower Services	1	Children's Library Assistant (part time)	\$ 15.70	No			21	Bachelor's	No	No
Portsmouth Free Public Library	Portsmouth	17,871	Borrower Services	1	Library Assistant (part time)	\$ 15.70	No			13	Bachelor's	No	No
Portsmouth Free Public Library	Portsmouth	17,871	Borrower Services	1	Children's Library Assistant (part time)	\$ 15.70	No			11	Bachelor's	No	No
Portsmouth Free Public Library	Portsmouth	17,871	Borrower Services	1	Library Assistant (part time)	\$ 15.70	No			17	Bachelor's	No	No
Portsmouth Free Public Library	Portsmouth	17,871	Borrower Services	1	Library Assistant (part time)	\$ 15.70	No			6	Bachelor's	No	No
Portsmouth Free Public Library	Portsmouth	17,871	Borrower Services	2	Sunday Library Assistants	\$ 17.00	No			4	Bachelor's	No	No
Portsmouth Free Public Library	Portsmouth	17,871	Children's Services	1	Children's Library Assistant (part time)	\$ 15.70	No			14	Bachelor's	No	No
Portsmouth Free Public Library	Portsmouth	17,871	Children's Services	1	Children's Librarian	\$ 25.47	Yes	\$ 46,355		35	MLS	Yes	No
Portsmouth Free Public Library	Portsmouth	17,871	Collection Management	1	Technical Services Library Assistant (part time)	\$ 17.50	No			28	HS Diploma	No	No

Staff Positions by Library FY2025

Location	Municipality	Population	Job Category	Number of Staff	Position Title	Hourly Rate	Hourly Rate Calculated by OLIS	Annual Salary	Annual Salary Calculated by OLIS	Hours per Week	Degree Required	Supervisor?	Vacant?
Portsmouth Free Public Library	Portsmouth	17,871	Director	1	Director	\$ 41.50	Yes	\$ 75,530	No	35	MLS	Yes	No
Portsmouth Free Public Library	Portsmouth	17,871	Facilities Maintenance	1	Maintenance	\$ 17.39	No			9	HS Diploma	No	No
Portsmouth Free Public Library	Portsmouth	17,871	Information Technology	1	Reference Assistant (part time)	\$ 17.50	No			14	Bachelor's	No	No
Portsmouth Free Public Library	Portsmouth	17,871	Teen Services	1	Teen/Ref Librarian (part time)	\$ 27.46	No			21	MLS	No	No
Community Libraries of Providence	Providence	131,744	Administrative Staff	1	Development Writer & Outreach Manager	\$ 25.00	No	\$ 52,000		40	Bachelor's	No	No
Community Libraries of Providence	Providence	131,744	Administrative Staff	1	Systems Coordinator	\$ 34.78	No	\$ 72,342		40	MLS	Yes	No
Community Libraries of Providence	Providence	131,744	Administrative Staff	1	Library Supervisor	\$ 33.66	No	\$ 70,013		40	MLS	Yes	No
Community Libraries of Providence	Providence	131,744	Administrative Staff	1	Library Supervisor	\$ 29.50	No	\$ 61,360		40	Master's	Yes	No
Community Libraries of Providence	Providence	131,744	Administrative Staff	1	Director of Philanthropy	\$ 42.67	No	\$ 88,754		40	Bachelor's	Yes	No
Community Libraries of Providence	Providence	131,744	Administrative Staff	1	Operations Director	\$ 35.83	No	\$ 74,526		40	Other	Yes	No
Community Libraries of Providence	Providence	131,744	Administrative Staff	1	Communications & Marketing Manager	\$ 29.06	No	\$ 60,445		40	Bachelor's	No	No
Community Libraries of Providence	Providence	131,744	Administrative Staff	1	Human Resources Manager	\$ 30.97	No	\$ 64,418		40	Other	No	No
Community Libraries of Providence	Providence	131,744	Adult Services	2	Program Specialist	\$ 21.96	No	\$ 30,832		27	Bachelor's	No	No
Community Libraries of Providence	Providence	131,744	Adult Services	1	Latino Programs Manager	\$ 27.29	No	\$ 53,216		37.5	Bachelor's	No	No
Community Libraries of Providence	Providence	131,744	Adult Services	1	Spanish Language Outreach Specialist	\$ 23.87	No	\$ 46,547		37.5	Bachelor's	No	No
Community Libraries of Providence	Providence	131,744	Adult Services	1	Teen & Adult Services Librarian	\$ 23.30	No	\$ 45,435		37.5	MLS	No	No
Community Libraries of Providence	Providence	131,744	Adult Services	2	Teen & Adult Services Librarian	\$ 26.79	No	\$ 52,241		37.5	MLS	No	No
Community Libraries of Providence	Providence	131,744	Adult Services	1	Adult Services Librarian	\$ 28.06	No	\$ 54,717		37.5	MLS	No	No
Community Libraries of Providence	Providence	131,744	Adult Services	1	Adult Services Librarian	\$ 31.00	No	\$ 60,450		37.5	MLS	No	No
Community Libraries of Providence	Providence	131,744	Adult Services	1	Adult Services Librarian	\$ 26.79	No	\$ 52,240		37.5	MLS	No	Yes
Community Libraries of Providence	Providence	131,744	Adult Services	1	Makerspace Program Coordinator	\$ 31.28	No	\$ 65,062		40	MLS	Yes	No
Community Libraries of Providence	Providence	131,744	Borrower Services	1	Library Clerk	\$ 16.59	No	\$ 17,254		20	HS Diploma	No	No
Community Libraries of Providence	Providence	131,744	Borrower Services	7	Library Clerk	\$ 16.00	No	\$ 31,200		37.5	HS Diploma	No	No
Community Libraries of Providence	Providence	131,744	Borrower Services	1	Library Clerk	\$ 16.00	No	\$ 31,200		37.5	HS Diploma	No	Yes
Community Libraries of Providence	Providence	131,744	Borrower Services	2	Library Clerk	\$ 16.59	No	\$ 32,351		37.5	HS Diploma	No	No
Community Libraries of Providence	Providence	131,744	Borrower Services	1	Program Clerk	\$ 17.37	No	\$ 33,872		37.5	HS Diploma	No	No
Community Libraries of Providence	Providence	131,744	Borrower Services	1	Catalog Clerk	\$ 17.77	No	\$ 34,652		37.5	HS Diploma	No	No
Community Libraries of Providence	Providence	131,744	Borrower Services	1	Library Clerk	\$ 19.01	No	\$ 37,070		37.5	HS Diploma	No	No
Community Libraries of Providence	Providence	131,744	Borrower Services	3	Library Clerk	\$ 19.53	No	\$ 38,084		37.5	HS Diploma	No	No
Community Libraries of Providence	Providence	131,744	Borrower Services	2	Lead Clerk	\$ 19.36	No	\$ 37,752		37.5	HS Diploma	No	No
Community Libraries of Providence	Providence	131,744	Borrower Services	1	Lead Clerk	\$ 22.70	No	\$ 44,265		37.5	HS Diploma	No	No
Community Libraries of Providence	Providence	131,744	Branch Manager	1	Library Manager	\$ 27.46	No	\$ 53,547		37.5	MLS	No	No
Community Libraries of Providence	Providence	131,744	Branch Manager	1	Library Manager	\$ 27.46	No	\$ 53,547		37.5	MLS	No	Yes
Community Libraries of Providence	Providence	131,744	Branch Manager	1	Library Manager	\$ 32.10	No	\$ 62,595		37.5	MLS	No	No
Community Libraries of Providence	Providence	131,744	Branch Manager	1	Library Manager	\$ 33.69	No	\$ 65,695		37.5	MLS	No	No
Community Libraries of Providence	Providence	131,744	Branch Manager	1	Library Manager	\$ 29.41	No	\$ 57,350		37.5	MLS	No	No
Community Libraries of Providence	Providence	131,744	Branch Manager	1	Library Manager	\$ 32.90	No	\$ 64,155		37.5	MLS	No	No
Community Libraries of Providence	Providence	131,744	Collection Management	1	Collection Management Services (CMS) Clerk	\$ 21.17	No	\$ 41,282		37.5	HS Diploma	No	No
Community Libraries of Providence	Providence	131,744	Collection Management	1	Acquisitions Specialist	\$ 22.81	No	\$ 44,480		37.5	Bachelor's	No	No
Community Libraries of Providence	Providence	131,744	Digital Services	1	Digital Services & IT Coordinator	\$ 33.84	No	\$ 70,387		40	Bachelor's	Yes	No
Community Libraries of Providence	Providence	131,744	Director	1	Library Director	\$ 55.29	No	\$ 115,003	No	40	MLS	Yes	No
Community Libraries of Providence	Providence	131,744	Educator	1	Spanish Language GED Instructor	\$ 27.00	No	\$ 42,120		30	Bachelor's	No	No
Community Libraries of Providence	Providence	131,744	Facilities Maintenance	1	Branch Custodian	\$ 19.00	No	\$ 39,520		40	HS Diploma	No	No
Community Libraries of Providence	Providence	131,744	Facilities Maintenance	2	Branch Custodian	\$ 20.59	No	\$ 42,827		40	HS Diploma	No	No
Community Libraries of Providence	Providence	131,744	Facilities Maintenance	1	Maintenance Tech	\$ 28.79	No	\$ 59,883		40	HS Diploma	No	No
Community Libraries of Providence	Providence	131,744	Facilities Maintenance	1	Maintenance Tech	\$ 27.42	No	\$ 57,034		40	HS Diploma	No	Yes
Community Libraries of Providence	Providence	131,744	Facilities Maintenance	1	Library Safety Ambassador	\$ 15.40	No	\$ 21,622		27	HS Diploma	No	No
Community Libraries of Providence	Providence	131,744	Facilities Maintenance	1	Library Safety Ambassador	\$ 15.40	No	\$ 24,024		30	HS Diploma	No	No
Community Libraries of Providence	Providence	131,744	Facilities Maintenance	2	Library Safety Ambassador	\$ 15.40	No	\$ 24,024		30	HS Diploma	No	Yes
Community Libraries of Providence	Providence	131,744	Information Technology	1	IT Manager	\$ 32.00	No	\$ 66,560		40	Bachelor's	No	No
Community Libraries of Providence	Providence	131,744	Youth Services (Children & Teen)	7	Youth Services Librarian	\$ 26.79	No	\$ 52,241		37.5	MLS	No	No
Community Libraries of Providence	Providence	131,744	Youth Services (Children & Teen)	1	Youth Services Librarian	\$ 28.06	No	\$ 54,717		37.5	MLS	No	No
Community Libraries of Providence	Providence	131,744	Youth Services (Children & Teen)	2	Youth Services Specialist	\$ 27.89	No	\$ 54,386		37.5	Bachelor's	No	No
Community Libraries of Providence	Providence	131,744	Youth Services (Children & Teen)	1	Youth Services Specialist	\$ 24.44	No	\$ 47,658		37.5	Bachelor's	No	No
Community Libraries of Providence	Providence	131,744	Youth Services (Children & Teen)	1	Youth Services Specialist	\$ 27.29	No	\$ 53,216		37.5	Bachelor's	No	No
Community Libraries of Providence	Providence	131,744	Youth Services (Children & Teen)	1	Youth Services Coordinator	\$ 35.08	No	\$ 72,966		40	MLS	Yes	No
Community Libraries of Providence	Providence	131,744	Youth Services (Children & Teen)	1	Youth Makerspace Coach	\$ 23.30	No	\$ 45,435		37.5	Bachelor's	No	No
Community Libraries of Providence	Providence	131,744	Youth Services (Children & Teen)	1	Connected Libraries Specialist	\$ 23.30	No	\$ 24,232		20	Bachelor's	No	No
Providence Public Library	Providence	59,190	Administrative Staff	1	Technology Integration Specialist	\$ 31.67	No			30	HS Diploma	No	No
Providence Public Library	Providence	59,190	Administrative Staff	1	Director of Programs and Exhibitions	\$ 48.22	Yes	\$ 87,753		35	Master's	Yes	Yes
Providence Public Library	Providence	59,190	Administrative Staff	1	Community Partnership Facilitator	\$ 29.09	Yes	\$ 52,944		35	Bachelor's	No	No
Providence Public Library	Providence	59,190	Administrative Staff	1	Events Coordinator	\$ 25.55	Yes	\$ 46,501		35	HS Diploma	No	No
Providence Public Library	Providence	59,190	Administrative Staff	1	Philanthropic Engagement Manager	\$ 40.30	Yes	\$ 73,346		35	Bachelor's	No	No
Providence Public Library	Providence	59,190	Administrative Staff	1	Controller	\$ 44.95	Yes	\$ 81,809		35	Bachelor's	Yes	No
Providence Public Library	Providence	59,190	Administrative Staff	1	Bilingual Program Data Manager	\$ 28.07	Yes	\$ 51,087		35	HS Diploma	No	No
Providence Public Library	Providence	59,190	Administrative Staff	1	Director of Marketing	\$ 48.01	Yes	\$ 87,378		35	Bachelor's	Yes	No
Providence Public Library	Providence	59,190	Administrative Staff	1	Administrative Assistant	\$ 23.07	No			20	HS Diploma	No	No
Providence Public Library	Providence	59,190	Administrative Staff	1	HR Manager	\$ 39.53	Yes	\$ 71,947		35	Bachelor's	Yes	No
Providence Public Library	Providence	59,190	Administrative Staff	1	Director of External Affairs	\$ 56.56	Yes	\$ 102,938		35	Bachelor's	Yes	No
Providence Public Library	Providence	59,190	Administrative Staff	1	Chief of Staff	\$ 40.94	Yes	\$ 74,511		35	Other	No	No
Providence Public Library	Providence	59,190	Administrative Staff	1	HR Manager	\$ 35.17	Yes	\$ 64,007		35	Other	Yes	Yes
Providence Public Library	Providence	59,190	Administrative Staff	1	Digital Content Creator	\$ 31.80	Yes	\$ 57,876		35	HS Diploma	No	No
Providence Public Library	Providence	59,190	Administrative Staff	1	Staff Accountant	\$ 31.89	Yes	\$ 58,040		35	Bachelor's	No	No
Providence Public Library	Providence	59,190	Administrative Staff	1	Bilingual Learning Support & Outreach Assistant	\$ 21.07	Yes	\$ 38,347		35	HS Diploma	No	No
Providence Public Library	Providence	59,190	Administrative Staff	1	Grants Manager	\$ 38.76	Yes	\$ 70,543		35	Bachelor's	No	No

Staff Positions by Library FY2025

Location	Municipality	Population	Job Category	Number of Staff	Position Title	Hourly Rate	Hourly Rate Calculated by OLS	Annual Salary	Annual Salary Calculated by OLS	Hours per Week	Degree Required	Supervisor?	Vacant?
Providence Public Library	Providence	59,190	Administrative Staff	1	Grants Manager	\$ 39.23	Yes	\$ 71,400		35	HS Diploma	No	Yes
Providence Public Library	Providence	59,190	Administrative Staff	1	Chief Operating Officer	\$ 64.28	Yes	\$ 116,998		35	Master's	Yes	No
Providence Public Library	Providence	59,190	Adult Services	1	Digital Equity and Learning Coordinator	\$ 34.69	Yes	\$ 63,136		35	Bachelor's	Yes	No
Providence Public Library	Providence	59,190	Adult Services	1	Bilingual Learning Facilitator	\$ 25.40	Yes	\$ 46,228		35	Bachelor's	No	No
Providence Public Library	Providence	59,190	Adult Services	1	Director of Adult Education	\$ 45.60	Yes	\$ 83,000		35	Bachelor's	Yes	No
Providence Public Library	Providence	59,190	Assistant Director	1	Deputy Library Director	\$ 63.15	Yes	\$ 114,933		35	MLS	Yes	No
Providence Public Library	Providence	59,190	Borrower Services	1	Information Services Librarian	\$ 30.20	Yes	\$ 54,964		35	MLS	No	No
Providence Public Library	Providence	59,190	Borrower Services	1	Information Services Specialists	\$ 18.00	No			18	HS Diploma	No	No
Providence Public Library	Providence	59,190	Borrower Services	1	Reading Room Attendant	\$ 21.88	No			20	HS Diploma	No	No
Providence Public Library	Providence	59,190	Borrower Services	1	Information Services Specialists	\$ 25.74	Yes	\$ 46,847		35	HS Diploma	No	No
Providence Public Library	Providence	59,190	Borrower Services	1	Senior Information Services Specialists	\$ 27.52	Yes	\$ 50,078		35	HS Diploma	Yes	Yes
Providence Public Library	Providence	59,190	Borrower Services	1	Information Services Technical Support Specialist	\$ 21.07	Yes	\$ 38,347		35	HS Diploma	No	No
Providence Public Library	Providence	59,190	Borrower Services	1	Information Services Specialists	\$ 19.43	Yes	\$ 35,363		35	HS Diploma	No	No
Providence Public Library	Providence	59,190	Borrower Services	1	Information Services Specialists	\$ 19.07	Yes	\$ 34,707		35	HS Diploma	No	No
Providence Public Library	Providence	59,190	Borrower Services	2	Information Services Librarian	\$ 29.09	Yes	\$ 52,944		35	MLS	No	No
Providence Public Library	Providence	59,190	Borrower Services	1	Information Services Librarian	\$ 29.09	No			20	MLS	No	No
Providence Public Library	Providence	59,190	Borrower Services	1	Head of Information Services	\$ 47.23	Yes	\$ 85,959		35	MLS	Yes	No
Providence Public Library	Providence	59,190	Borrower Services	1	Information Services Specialists	\$ 19.80	Yes	\$ 36,036		35	HS Diploma	No	No
Providence Public Library	Providence	59,190	Borrower Services	1	Information Services Specialists	\$ 24.56	Yes	\$ 44,700		35	HS Diploma	No	No
Providence Public Library	Providence	59,190	Borrower Services	1	Senior Information Services Librarian	\$ 34.04	Yes	\$ 61,953		35	MLS	Yes	No
Providence Public Library	Providence	59,190	Borrower Services	1	Information Services Technical Support Specialist	\$ 21.83	Yes	\$ 39,727		35	HS Diploma	No	Yes
Providence Public Library	Providence	59,190	Children's Services	1	Early Childhood and Children's Educator	\$ 39.91	Yes	\$ 72,636		35	Master's	No	No
Providence Public Library	Providence	59,190	Children's Services	1	Senior Children's Librarian	\$ 41.71	Yes	\$ 75,917		35	MLS	No	No
Providence Public Library	Providence	59,190	Collection Management	1	Acquisitions Catalog Librarian	\$ 36.23	Yes	\$ 65,939		35	MLS	No	No
Providence Public Library	Providence	59,190	Collection Management	1	Curator of RI Collections	\$ 36.78	Yes	\$ 66,940		35	MLS	No	No
Providence Public Library	Providence	59,190	Collection Management	1	Director of Special Collections	\$ 45.51	Yes	\$ 82,833		35	MLS	Yes	No
Providence Public Library	Providence	59,190	Collection Management	1	Digital Projects Technician	\$ 28.05	Yes	\$ 51,051		35	HS Diploma	No	No
Providence Public Library	Providence	59,190	Collection Management	1	Head of Acquisitions and Cataloging	\$ 36.01	Yes	\$ 65,538		35	MLS	Yes	Yes
Providence Public Library	Providence	59,190	Collection Management	1	Curator of RI Collections	\$ 40.82	Yes	\$ 74,297		35	MLS	Yes	Yes
Providence Public Library	Providence	59,190	Director	1	Executive Director	\$ 85.08	Yes	\$ 154,845	No	35	MLS	Yes	No
Providence Public Library	Providence	59,190	Educator	1	Language Pathways Coordinator	\$ 37.23	Yes	\$ 67,759		35	Master's	Yes	No
Providence Public Library	Providence	59,190	Educator	1	Lead Education Teacher	\$ 25.00	No			5	Bachelor's	No	No
Providence Public Library	Providence	59,190	Educator	1	Professional Learning Pathways Coordinator	\$ 36.26	Yes	\$ 65,993		35	Bachelor's	Yes	No
Providence Public Library	Providence	59,190	Educator	1	Lead Adult Education Teacher	\$ 25.00	No			19	Bachelor's	No	No
Providence Public Library	Providence	59,190	Educator	1	Innovations Project Coordinator	\$ 50.00	No			10	Bachelor's	No	Yes
Providence Public Library	Providence	59,190	Educator	1	Lead Adult Education Teacher	\$ 26.46	No			15	Bachelor's	No	No
Providence Public Library	Providence	59,190	Educator	1	Lead Adult Education Teacher	\$ 28.27	Yes	\$ 51,451		35	Bachelor's	No	No
Providence Public Library	Providence	59,190	Educator	1	Lead Adult Education Teacher	\$ 25.00	No			4	Bachelor's	No	No
Providence Public Library	Providence	59,190	Educator	1	Technology Pathways Coordinator	\$ 35.37	Yes	\$ 64,373		35	Bachelor's	Yes	No
Providence Public Library	Providence	59,190	Facilities Maintenance	1	Security Officer	\$ 21.47	Yes	\$ 39,075		35	HS Diploma	No	No
Providence Public Library	Providence	59,190	Facilities Maintenance	1	Maintenance Assistant	\$ 39.01	Yes	\$ 70,998		35	HS Diploma	No	No
Providence Public Library	Providence	59,190	Facilities Maintenance	1	Lead Security Officer	\$ 25.00	Yes	\$ 45,500		35	HS Diploma	No	No
Providence Public Library	Providence	59,190	Facilities Maintenance	1	Maintenance Assistant	\$ 29.86	Yes	\$ 54,345		35	HS Diploma	No	No
Providence Public Library	Providence	59,190	Facilities Maintenance	1	Maintenance Assistant	\$ 29.86	No			8	HS Diploma	No	No
Providence Public Library	Providence	59,190	Facilities Maintenance	1	Director of Facilities	\$ 49.95	Yes	\$ 90,909		35	Other	Yes	No
Providence Public Library	Providence	59,190	Information Technology	1	Technology Manager	\$ 35.14	Yes	\$ 63,955		35	Bachelor's	No	No
Providence Public Library	Providence	59,190	Information Technology	1	Digital Projects Librarian	\$ 32.55	Yes	\$ 59,246		35	MLS	No	Yes
Providence Public Library	Providence	59,190	Page	1	Stack Clerk	\$ 19.94	Yes	\$ 36,291		35	HS Diploma	No	No
Providence Public Library	Providence	59,190	Teen Services	1	Director of Youth Services	\$ 46.70	Yes	\$ 85,000		35	Master's	Yes	No
Providence Public Library	Providence	59,190	Teen Services	1	Workshop Coordinator	\$ 25.89	No			4	HS Diploma	No	No
Providence Public Library	Providence	59,190	Teen Services	1	Teen Educator	\$ 30.21	Yes	\$ 54,982		35	Bachelor's	No	No
Providence Public Library	Providence	59,190	Teen Services	1	Teen Librarian	\$ 32.58	Yes	\$ 59,296		35	MLS	No	No
Providence Public Library	Providence	59,190	Teen Services	1	Youth Services Specialist	\$ 19.80	Yes	\$ 36,036		35	HS Diploma	No	No
Providence Public Library	Providence	59,190	Teen Services	1	Maker Education Manager	\$ 34.70	Yes	\$ 63,154		35	Bachelor's	Yes	No
Clark Memorial Library	Richmond	8,020	Administrative Staff	1	Bookkeeper	\$ 21.43	No			2	HS Diploma	No	No
Clark Memorial Library	Richmond	8,020	Adult Services	1	Adult Services Librarian	\$ 16.72	No			7	MLS	Yes	No
Clark Memorial Library	Richmond	8,020	Assistant Director	1	Assistant Director	\$ 23.63	No			6	Bachelor's	Yes	No
Clark Memorial Library	Richmond	8,020	Borrower Services	1	Circulation Staff	\$ 16.00	No			11	HS Diploma	No	No
Clark Memorial Library	Richmond	8,020	Borrower Services	1	Circulation Staff	\$ 17.00	No			13	HS Diploma	No	No
Clark Memorial Library	Richmond	8,020	Children's Services	1	Children's Librarian	\$ 23.00	No			19	MLS	Yes	Yes
Clark Memorial Library	Richmond	8,020	Director	1	Director	\$ 31.49	Yes	\$ 40,937	No	25	MLS	Yes	No
Clark Memorial Library	Richmond	8,020	Youth Services (Children & Teen)	1	Children's Assistant	\$ 17.70	No			4	Bachelor's	Yes	No
Hope Library	Scituate	4,230	Assistant Director	1	Assistant Director	\$ 24.00	No			35	Bachelor's	Yes	No
Hope Library	Scituate	4,230	Borrower Services	1	Circulation Tech	\$ 15.70	No			9	HS Diploma	No	No
Hope Library	Scituate	4,230	Borrower Services	1	Circulation Tech	\$ 15.70	No			10	HS Diploma	No	No
Hope Library	Scituate	4,230	Borrower Services	1	Circulation Tech	\$ 15.70	No			7	HS Diploma	No	No
Hope Library	Scituate	4,230	Children's Services	1	Children's Services Provider (Enrolled in MLIS program)	\$ 18.50	No			25	MLS	No	No
Hope Library	Scituate	4,230	Children's Services	1	Children's Librarian	\$ 22.00	No			20	MLS	No	No
Hope Library	Scituate	4,230	Collection Management	1	Collections Manager	\$ 20.00	No			35	Bachelor's	No	No
Hope Library	Scituate	4,230	Director	1	Executive Director	\$ 27.60	No	\$ 57,408	Yes	40	MLS	Yes	No
Hope Library	Scituate	4,230	Facilities Maintenance	1	Janitor	\$ 15.00	No			12	HS Diploma	No	Yes
Hope Library	Scituate	4,230	Page	2	Library Page	\$ 15.00	No			3	None	No	No
Hope Library	Scituate	4,230	Youth Services (Children & Teen)	1	Youth Services Provider (Enrolled in MLIS program)	\$ 18.50	No			26	MLS	No	No
North Scituate Public Library	Scituate	6,154	Administrative Staff	1	Administrative Assistant / Bookkeeper	\$ 17.50	No			6	HS Diploma	No	No
North Scituate Public Library	Scituate	6,154	Administrative Staff	1	Project Assistant	\$ 18.75	No			4	HS Diploma	No	No

Staff Positions by Library FY2025

Location	Municipality	Population	Job Category	Number of Staff	Position Title	Hourly Rate	Hourly Rate Calculated by OLIS	Annual Salary	Annual Salary Calculated by OLIS	Hours per Week	Degree Required	Supervisor?	Vacant?
North Scituate Public Library	Scituate	6,154	Adult Services	1	Adult Services Librarian	\$ 19.00	No			29	MLS	Yes	No
North Scituate Public Library	Scituate	6,154	Adult Services	1	Weekend Reference Librarian	\$ 23.50	No			6.5	MLS	No	No
North Scituate Public Library	Scituate	6,154	Borrower Services	1	Circulation Supervisor	\$ 23.50	No			33	HS Diploma	Yes	No
North Scituate Public Library	Scituate	6,154	Borrower Services	1	Circulation Assistant	\$ 16.00	No			22.5	HS Diploma	No	No
North Scituate Public Library	Scituate	6,154	Borrower Services	1	Circulation Assistant	\$ 15.75	No			6.5	HS Diploma	No	No
North Scituate Public Library	Scituate	6,154	Borrower Services	1	Circulation Assistant	\$ 15.50	No			19.5	HS Diploma	No	No
North Scituate Public Library	Scituate	6,154	Borrower Services	1	Circulation Assistant	\$ 15.50	No			9.5	HS Diploma	No	No
North Scituate Public Library	Scituate	6,154	Borrower Services	1	Circulation Assistant	\$ 15.50	No			3.5	HS Diploma	No	No
North Scituate Public Library	Scituate	6,154	Borrower Services	1	Circulation Assistant	\$ 15.00	No			14	HS Diploma	No	No
North Scituate Public Library	Scituate	6,154	Borrower Services	1	Circulation Assistant	\$ 15.00	No			10.5	HS Diploma	No	No
North Scituate Public Library	Scituate	6,154	Borrower Services	2	Circulation Assistant	\$ 15.00	No			9	HS Diploma	No	No
North Scituate Public Library	Scituate	6,154	Borrower Services	1	Circulation Assistant	\$ 15.00	No			6.5	HS Diploma	No	No
North Scituate Public Library	Scituate	6,154	Director	1	Director	\$ 35.10	Yes	\$ 73,000	No	40	MLS	Yes	No
North Scituate Public Library	Scituate	6,154	Youth Services (Children & Teen)	1	Assistant Director / Youth Services Librarian	\$ 23.00	No			30	MLS	Yes	No
East Smithfield Public Library	Smithfield	9,476	Administrative Staff	1	Office Manager	\$ 34.07	Yes	\$ 62,000		35	Bachelor's	No	No
East Smithfield Public Library	Smithfield	9,476	Adult Services	1	Head of Patron Services	\$ 36.99	Yes	\$ 67,330		35	Bachelor's	Yes	No
East Smithfield Public Library	Smithfield	9,476	Borrower Services	1	Library Associate	\$ 16.47	No			14	HS Diploma	No	No
East Smithfield Public Library	Smithfield	9,476	Borrower Services	1	Library Associate	\$ 16.47	No			19	HS Diploma	No	No
East Smithfield Public Library	Smithfield	9,476	Borrower Services	1	Library Associate	\$ 20.66	No			30	HS Diploma	No	No
East Smithfield Public Library	Smithfield	9,476	Borrower Services	2	Library Associate	\$ 15.47	No			17	HS Diploma	No	No
East Smithfield Public Library	Smithfield	9,476	Borrower Services	1	Library Associate	\$ 15.47	No			6	HS Diploma	No	No
East Smithfield Public Library	Smithfield	9,476	Borrower Services	1	Library Associate	\$ 15.47	No			12	HS Diploma	No	No
East Smithfield Public Library	Smithfield	9,476	Borrower Services	1	Library Associate	\$ 15.47	No			31	HS Diploma	No	No
East Smithfield Public Library	Smithfield	9,476	Borrower Services	1	Library Associate	\$ 16.38	No			26	HS Diploma	No	No
East Smithfield Public Library	Smithfield	9,476	Borrower Services	1	Makerspace Assistant	\$ 17.50	No			9	HS Diploma	No	No
East Smithfield Public Library	Smithfield	9,476	Borrower Services	1	Makerspace Librarian	\$ 21.84	No			15	MLS	No	No
East Smithfield Public Library	Smithfield	9,476	Collection Management	1	Acquisitions & Cataloging Librarian	\$ 25.82	No			35	MLS	No	No
East Smithfield Public Library	Smithfield	9,476	Director	1	Director	\$ 38.11	Yes	\$ 79,269	No	40	MLS	Yes	No
East Smithfield Public Library	Smithfield	9,476	Facilities Maintenance	1	Head of Facilities	\$ 18.37	No			15	HS Diploma	No	No
East Smithfield Public Library	Smithfield	9,476	Youth Services (Children & Teen)	1	Head of Youth Services	\$ 34.89	Yes	\$ 63,508		35	MLS	Yes	No
East Smithfield Public Library	Smithfield	9,476	Youth Services (Children & Teen)	1	Youth Services Associate	\$ 24.00	No			20	Bachelor's	No	No
Greenville Public Library	Smithfield	12,642	Administrative Staff	1	Secretary	\$ 19.53	No			8	Bachelor's	No	No
Greenville Public Library	Smithfield	12,642	Adult Services	1	Reference Librarian/Technical Services	\$ 30.00	No			35	MLS	No	No
Greenville Public Library	Smithfield	12,642	Adult Services	1	Reference Librarian	\$ 21.00	No			4	MLS	No	No
Greenville Public Library	Smithfield	12,642	Adult Services	1	Reference Assistant	\$ 21.00	No			25	Bachelor's	No	No
Greenville Public Library	Smithfield	12,642	Assistant Director	1	Assistant Director	\$ 43.00	No			35	MLS	Yes	No
Greenville Public Library	Smithfield	12,642	Borrower Services	1	Circulation Assistant	\$ 20.44	No			35	Bachelor's	No	No
Greenville Public Library	Smithfield	12,642	Borrower Services	1	Circulation Assistant	\$ 16.84	No			20	Bachelor's	No	No
Greenville Public Library	Smithfield	12,642	Borrower Services	1	Circulation Assistant	\$ 17.23	No			16	Bachelor's	No	No
Greenville Public Library	Smithfield	12,642	Borrower Services	1	Circulation Assistant	\$ 15.25	No			10	Bachelor's	No	No
Greenville Public Library	Smithfield	12,642	Borrower Services	1	Circulation Assistant	\$ 18.20	No			10	Bachelor's	No	No
Greenville Public Library	Smithfield	12,642	Children's Services	1	Children's Supervisor	\$ 37.00	No			35	MLS	Yes	No
Greenville Public Library	Smithfield	12,642	Children's Services	1	Children's Librarian	\$ 27.69	No			26	MLS	No	No
Greenville Public Library	Smithfield	12,642	Children's Services	1	Children's Assistant	\$ 19.00	No			15	Bachelor's	No	Yes
Greenville Public Library	Smithfield	12,642	Director	1	Library Director	\$ 48.00	No	\$ 87,360	Yes	35	MLS	Yes	No
Greenville Public Library	Smithfield	12,642	Information Technology	1	Technology Coordinator/Circulation Supervisor	\$ 35.00	No			35	Bachelor's	Yes	No
Greenville Public Library	Smithfield	12,642	Page	3	Page	\$ 15.00	No			10	None	No	No
Greenville Public Library	Smithfield	12,642	Teen Services	1	Young Adult Librarian	\$ 30.00	No			35	MLS	No	No
South Kingstown Public Library	South Kingstown	31,931	Adult Services	1	Central Services Librarian	\$ 40.50	Yes	\$ 73,717		35	MLS	Yes	No
South Kingstown Public Library	South Kingstown	31,931	Adult Services	1	Community Learning Center Coordinator	\$ 35.28	Yes	\$ 64,201		35	MLS	Yes	No
South Kingstown Public Library	South Kingstown	31,931	Adult Services	1	Reference and Program Librarian	\$ 31.27	Yes	\$ 56,907		35	MLS	Yes	No
South Kingstown Public Library	South Kingstown	31,931	Adult Services	1	Programming and Outreach Librarian	\$ 30.46	Yes	\$ 55,446		35	MLS	Yes	No
South Kingstown Public Library	South Kingstown	31,931	Adult Services	1	Public Services Librarian	\$ 28.86	Yes	\$ 52,530		35	MLS	Yes	No
South Kingstown Public Library	South Kingstown	31,931	Adult Services	1	Public Services and Administrative Librarian	\$ 28.86	Yes	\$ 52,530		35	MLS	Yes	Yes
South Kingstown Public Library	South Kingstown	31,931	Borrower Services	1	Circulation Supervisor	\$ 30.46	Yes	\$ 55,446		35	Bachelor's	Yes	No
South Kingstown Public Library	South Kingstown	31,931	Borrower Services	2	Library Technical Assistant	\$ 22.39	No			21	HS Diploma	No	No
South Kingstown Public Library	South Kingstown	31,931	Borrower Services	3	Library Assistant	\$ 15.45	No			19	HS Diploma	No	No
South Kingstown Public Library	South Kingstown	31,931	Borrower Services	2	Library Assistant	\$ 15.45	No			18	HS Diploma	No	No
South Kingstown Public Library	South Kingstown	31,931	Borrower Services	2	Library Assistant	\$ 15.45	No			16	HS Diploma	No	No
South Kingstown Public Library	South Kingstown	31,931	Borrower Services	1	Library Assistant	\$ 15.45	No			14.5	HS Diploma	No	No
South Kingstown Public Library	South Kingstown	31,931	Borrower Services	1	Library Assistant	\$ 15.45	No			8	HS Diploma	No	No
South Kingstown Public Library	South Kingstown	31,931	Branch Manager	1	Branch Librarian	\$ 35.28	Yes	\$ 64,201		35	MLS	Yes	No
South Kingstown Public Library	South Kingstown	31,931	Collection Management	1	Library Technical Assistant	\$ 25.41	No			13	HS Diploma	No	No
South Kingstown Public Library	South Kingstown	31,931	Director	1	Library Director	\$ 54.92	Yes	\$ 99,963	No	35	MLS	Yes	No
South Kingstown Public Library	South Kingstown	31,931	Page	1	Library Aide	\$ 15.45	No			11.5	None	No	Yes
South Kingstown Public Library	South Kingstown	31,931	Page	1	Library Aide	\$ 15.45	No			3	None	No	Yes
South Kingstown Public Library	South Kingstown	31,931	Youth Services (Children & Teen)	3	Youth Services Librarian	\$ 32.07	Yes	\$ 58,364		35	MLS	Yes	No
Tiverton Public Library	Tiverton	16,359	Administrative Staff	1	Office Administrator	\$ 24.21	No			19	Bachelor's	No	No
Tiverton Public Library	Tiverton	16,359	Adult Services	1	Adult Services and Outreach Librarian	\$ 28.71	No			35	MLS	No	No
Tiverton Public Library	Tiverton	16,359	Borrower Services	1	Library Assistant	\$ 19.10	No			19	HS Diploma	No	No
Tiverton Public Library	Tiverton	16,359	Borrower Services	1	Library Assistant	\$ 17.75	No			19	HS Diploma	No	No
Tiverton Public Library	Tiverton	16,359	Borrower Services	1	On-Call Library Assistant	\$ 17.00	No			10	HS Diploma	No	No
Tiverton Public Library	Tiverton	16,359	Branch Manager	1	Head of Patron and Branch Services	\$ 24.78	No			35	Bachelor's	No	No
Tiverton Public Library	Tiverton	16,359	Children's Services	1	Head of Children's Services	\$ 28.14	No			35	Bachelor's	No	No

Staff Positions by Library FY2025

Location	Municipality	Population	Job Category	Number of Staff	Position Title	Hourly Rate	Hourly Rate Calculated by OLIS	Annual Salary	Annual Salary Calculated by OLIS	Hours per Week	Degree Required	Supervisor?	Vacant?
Tiverton Public Library	Tiverton	16,359	Children's Services	1	Children's Library Assistant	\$ 17.75	No			19	HS Diploma	No	No
Tiverton Public Library	Tiverton	16,359	Children's Services	1	Children's Library Assistant	\$ 17.50	No			19	HS Diploma	No	Yes
Tiverton Public Library	Tiverton	16,359	Collection Management	1	Reference and Acquisitions Librarian	\$ 27.03	No			25	MLS	No	No
Tiverton Public Library	Tiverton	16,359	Director	1	Library Director	\$ 44.78	Yes	\$ 81,500	No	35	MLS	Yes	No
Tiverton Public Library	Tiverton	16,359	Facilities Maintenance	1	Custodian	\$ 18.50	No			15	HS Diploma	No	Yes
Tiverton Public Library	Tiverton	16,359	Information Technology	1	Technology Coordinator	\$ 27.06	No			35	Bachelor's	No	No
Tiverton Public Library	Tiverton	16,359	Page	3	Library Page	\$ 15.00	No			9	None	No	Yes
Tiverton Public Library	Tiverton	16,359	Teen Services	1	Young Adult Services Librarian	\$ 27.06	No			35	MLS	No	No
George Hall Free Library	Warren	11,147	Adult Services	1	Head of Adult Services	\$ 28.58	Yes	\$ 41,580		28	MLS	No	No
George Hall Free Library	Warren	11,147	Borrower Services	1	Clerk	\$ 15.10	No			18	Bachelor's	No	No
George Hall Free Library	Warren	11,147	Borrower Services	1	Clerk	\$ 15.10	No			22	Bachelor's	No	No
George Hall Free Library	Warren	11,147	Borrower Services	1	Clerk	\$ 16.80	No			12	HS Diploma	No	No
George Hall Free Library	Warren	11,147	Children's Services	1	Clerk	\$ 15.00	No			12	Bachelor's	No	No
George Hall Free Library	Warren	11,147	Children's Services	1	Clerk	\$ 15.00	No			6	Bachelor's	No	No
George Hall Free Library	Warren	11,147	Children's Services	1	Clerk	\$ 15.25	No			4	Bachelor's	No	No
George Hall Free Library	Warren	11,147	Collection Management	1	Archivist	\$ 21.00	No			12	MLS	No	No
George Hall Free Library	Warren	11,147	Collection Management	1	Cataloger	\$ 16.00	No			8	Bachelor's	No	No
George Hall Free Library	Warren	11,147	Collection Management	1	Assistant Cataloger	\$ 15.10	No			18	Bachelor's	No	No
George Hall Free Library	Warren	11,147	Director	1	Director	\$ 36.85	Yes	\$ 67,068	No	35	MLS	Yes	No
George Hall Free Library	Warren	11,147	Youth Services (Children & Teen)	1	Head of Youth Services	\$ 30.60	Yes	\$ 55,692		35	MLS	Yes	No
Pontiac Free Library	Warwick	9,631	Borrower Services	1	Circulation Manager	\$ 19.00	No			20	HS Diploma	Yes	No
Pontiac Free Library	Warwick	9,631	Borrower Services	1	Circulation Assistant	\$ 17.00	No			19	HS Diploma	No	No
Pontiac Free Library	Warwick	9,631	Borrower Services	1	Circulation Assistant	\$ 15.25	No			6	HS Diploma	No	No
Pontiac Free Library	Warwick	9,631	Borrower Services	1	Circulation Assistant	\$ 15.00	No			6	HS Diploma	No	No
Pontiac Free Library	Warwick	9,631	Director	2	Library Director	\$ 29.00	No	\$ 13,195	Yes	8.75	MLS	Yes	No
Warwick Public Library	Warwick	73,192	Administrative Staff	1	Administrative Assistant	\$ 32.42	No			35	Other	No	No
Warwick Public Library	Warwick	73,192	Adult Services	1	Coordinator of Adult Services	\$ 39.50	No			37.5	MLS	Yes	No
Warwick Public Library	Warwick	73,192	Adult Services	1	Community Services Librarian	\$ 41.21	No			37.5	MLS	Yes	No
Warwick Public Library	Warwick	73,192	Adult Services	1	Reference Librarian	\$ 35.55	No			37.5	MLS	No	No
Warwick Public Library	Warwick	73,192	Adult Services	1	Reference Librarian	\$ 30.93	No			37.5	MLS	No	No
Warwick Public Library	Warwick	73,192	Adult Services	1	Reference Librarian	\$ 28.77	No			37.5	MLS	No	No
Warwick Public Library	Warwick	73,192	Adult Services	1	Reference Librarian	\$ 30.20	No			19	MLS	No	No
Warwick Public Library	Warwick	73,192	Adult Services	1	Reference Librarian	\$ 27.37	No			19	MLS	No	Yes
Warwick Public Library	Warwick	73,192	Adult Services	1	Library Aide - Reference	\$ 22.72	No			19	HS Diploma	No	No
Warwick Public Library	Warwick	73,192	Adult Services	1	Library Aide - Reference	\$ 22.11	No			19	HS Diploma	No	Yes
Warwick Public Library	Warwick	73,192	Assistant Director	1	Deputy Director	\$ 47.13	No			37.5	MLS	Yes	No
Warwick Public Library	Warwick	73,192	Borrower Services	1	Circulation Supervisor	\$ 30.92	No			35	Other	Yes	No
Warwick Public Library	Warwick	73,192	Borrower Services	1	Library Aide - Circulation	\$ 27.92	No			35	HS Diploma	No	No
Warwick Public Library	Warwick	73,192	Borrower Services	1	Library Aide - Circulation	\$ 27.30	No			35	HS Diploma	No	No
Warwick Public Library	Warwick	73,192	Borrower Services	1	Library Aide - Circulation	\$ 26.80	No			35	HS Diploma	No	No
Warwick Public Library	Warwick	73,192	Borrower Services	3	Library Aide - Circulation	\$ 24.93	No			35	HS Diploma	No	No
Warwick Public Library	Warwick	73,192	Borrower Services	1	Library Aide - Circulation	\$ 21.50	No			35	HS Diploma	No	No
Warwick Public Library	Warwick	73,192	Borrower Services	4	Library Aide - Circulation	\$ 22.72	No			19	HS Diploma	No	No
Warwick Public Library	Warwick	73,192	Borrower Services	1	Library Aide - Circulation	\$ 22.72	No			19	HS Diploma	No	Yes
Warwick Public Library	Warwick	73,192	Borrower Services	1	Library Aide - Circulation	\$ 20.28	No			19	HS Diploma	No	No
Warwick Public Library	Warwick	73,192	Borrower Services	1	Library Aide - Circulation	\$ 17.50	No			12	HS Diploma	No	No
Warwick Public Library	Warwick	73,192	Borrower Services	1	Library Aide - Circulation	\$ 22.72	No			10	HS Diploma	No	No
Warwick Public Library	Warwick	73,192	Borrower Services	1	Library Aide - Circulation	\$ 19.59	No			8	HS Diploma	No	No
Warwick Public Library	Warwick	73,192	Branch Manager	1	Branch Technician	\$ 30.06	No			35	HS Diploma	Yes	No
Warwick Public Library	Warwick	73,192	Branch Manager	1	Branch Technician	\$ 30.06	No			35	HS Diploma	Yes	Yes
Warwick Public Library	Warwick	73,192	Branch Manager	1	Branch Technician	\$ 29.39	No			35	HS Diploma	Yes	No
Warwick Public Library	Warwick	73,192	Children's Services	1	Children's Librarian	\$ 40.44	No			37.5	MLS	No	No
Warwick Public Library	Warwick	73,192	Children's Services	1	Children's Librarian	\$ 35.55	No			37.5	MLS	No	No
Warwick Public Library	Warwick	73,192	Children's Services	1	Children's Librarian	\$ 28.77	No			19	MLS	No	No
Warwick Public Library	Warwick	73,192	Children's Services	1	Library Aide - Children's	\$ 22.72	No			19	HS Diploma	No	No
Warwick Public Library	Warwick	73,192	Children's Services	1	Library Aide - Children's	\$ 19.59	No			19	HS Diploma	No	No
Warwick Public Library	Warwick	73,192	Collection Management	1	Coordinator of Collections & Technical Services	\$ 47.29	No			37.5	MLS	Yes	No
Warwick Public Library	Warwick	73,192	Collection Management	1	Library Aide - Technology	\$ 22.72	No			19	HS Diploma	No	No
Warwick Public Library	Warwick	73,192	Director	1	Director	\$ 65.44	No	\$ 127,608	Yes	37.5	MLS	Yes	No
Warwick Public Library	Warwick	73,192	Facilities Maintenance	1	Custodial Services Leadperson	\$ 34.60	No			40	HS Diploma	Yes	No
Warwick Public Library	Warwick	73,192	Facilities Maintenance	1	Buildings Custodian	\$ 23.17	No			40	Other	No	No
Warwick Public Library	Warwick	73,192	Facilities Maintenance	1	Buildings Custodian	\$ 24.93	No			40	Other	No	No
Warwick Public Library	Warwick	73,192	Information Technology	1	Coordinator of Technology	\$ 37.38	No			37.5	MLS	Yes	No
Warwick Public Library	Warwick	73,192	Information Technology	1	Library Aide - Technology	\$ 21.50	No			35	HS Diploma	No	No
Warwick Public Library	Warwick	73,192	Page	3	Shelver	\$ 15.00	No			16	Other	No	No
Warwick Public Library	Warwick	73,192	Page	1	Shelver	\$ 15.00	No			12	Other	No	No
Warwick Public Library	Warwick	73,192	Page	1	Shelver	\$ 15.00	No			10	Other	No	No
Warwick Public Library	Warwick	73,192	Page	1	Shelver	\$ 15.00	No			8	Other	No	Yes
Warwick Public Library	Warwick	73,192	Teen Services	1	Teen Librarian	\$ 35.55	No			37.5	MLS	No	No
Warwick Public Library	Warwick	73,192	Youth Services (Children & Teen)	1	Coordinator of Youth Services	\$ 41.21	No			37.5	MLS	Yes	No
Louitt Library	West Greenwich	6,528	Assistant Director	1	Asst. Director/Youth Services Librarian	\$ 29.50	No			35	MLS	No	No
Louitt Library	West Greenwich	6,528	Borrower Services	1	Borrower Services/ILL	\$ 21.00	No			18	Bachelor's	No	No
Louitt Library	West Greenwich	6,528	Borrower Services	2	Borrower Services	\$ 17.00	No			7.5	Bachelor's	No	No
Louitt Library	West Greenwich	6,528	Borrower Services	1	Borrower Services/Circ Head	\$ 24.50	No			21	Bachelor's	No	No

Staff Positions by Library FY2025

Location	Municipality	Population	Job Category	Number of Staff	Position Title	Hourly Rate	Hourly Rate Calculated by OLIS	Annual Salary	Annual Salary Calculated by OLIS	Hours per Week	Degree Required	Supervisor?	Vacant?
Louitt Library	West Greenwich	6,528	Borrower Services	1	Borrower Services	\$ 18.00	No			12	Bachelor's	No	No
Louitt Library	West Greenwich	6,528	Borrower Services	1	Borrower Services	\$ 19.00	No			11	Bachelor's	No	No
Louitt Library	West Greenwich	6,528	Borrower Services	1	Borrower Services	\$ 17.00	No			16	Bachelor's	No	No
Louitt Library	West Greenwich	6,528	Director	1	Director	\$ 39.35	No	\$ 71,617	Yes	35	MLS	Yes	No
Louitt Library	West Greenwich	6,528	Page	1	Borrower Services/Page/Per Diem	\$ 15.00	No			4	None	No	No
West Warwick Public Library	West Warwick	31,012	Administrative Staff	1	Administrative Assistant	\$ 25.85	No			35	Other	No	No
West Warwick Public Library	West Warwick	31,012	Adult Services	1	Head of Adult Services	\$ 31.17	No			35	MLS	Yes	No
West Warwick Public Library	West Warwick	31,012	Adult Services	1	Adult Services Librarian	\$ 26.23	No			35	MLS	Yes	No
West Warwick Public Library	West Warwick	31,012	Adult Services	3	Adult Services Assistant	\$ 15.00	No			19	HS Diploma	No	No
West Warwick Public Library	West Warwick	31,012	Borrower Services	1	Head of Circulation	\$ 26.54	No			35	Other	Yes	No
West Warwick Public Library	West Warwick	31,012	Borrower Services	5	Circulation Assistant	\$ 15.00	No			19	HS Diploma	No	No
West Warwick Public Library	West Warwick	31,012	Borrower Services	1	Circulation Assistant	\$ 15.00	No			16	HS Diploma	No	No
West Warwick Public Library	West Warwick	31,012	Collection Management	1	Cataloger	\$ 16.50	No			19	HS Diploma	No	No
West Warwick Public Library	West Warwick	31,012	Director	1	Library Director	\$ 41.58	No	\$ 75,676	Yes	35	MLS	Yes	No
West Warwick Public Library	West Warwick	31,012	Educator	1	Literacy Coordinator	\$ 26.21	No			35	Bachelor's	Yes	No
West Warwick Public Library	West Warwick	31,012	Educator	1	Bilingual Family Services Assistant	\$ 15.00	No			19	HS Diploma	No	No
West Warwick Public Library	West Warwick	31,012	Facilities Maintenance	1	Custodian	\$ 25.00	No			35	HS Diploma	Yes	No
West Warwick Public Library	West Warwick	31,012	Facilities Maintenance	1	Custodial Assistant	\$ 15.00	No			9	None	No	No
West Warwick Public Library	West Warwick	31,012	Information Technology	1	Information Technology Librarian	\$ 30.65	No			35	MLS	No	No
West Warwick Public Library	West Warwick	31,012	Youth Services (Children & Teen)	1	Head of Youth Services	\$ 31.17	No			35	MLS	Yes	No
West Warwick Public Library	West Warwick	31,012	Youth Services (Children & Teen)	1	Youth Services Librarian	\$ 26.23	No			35	MLS	Yes	No
West Warwick Public Library	West Warwick	31,012	Youth Services (Children & Teen)	2	Youth Services Assistant	\$ 15.00	No			19	HS Diploma	No	No
Westerly Public Library	Westerly	23,359	Administrative Staff	1	Business Office Manager	\$ 27.21	No			35	Other	No	No
Westerly Public Library	Westerly	23,359	Administrative Staff	1	Director of Marketing	\$ 38.00	Yes	\$ 69,160		35	Bachelor's	Yes	No
Westerly Public Library	Westerly	23,359	Administrative Staff	1	Program & Outreach Associate	\$ 18.00	No			35	Other	No	Yes
Westerly Public Library	Westerly	23,359	Administrative Staff	1	Director of Development	\$ 42.03	Yes	\$ 76,495		35	Bachelor's	Yes	No
Westerly Public Library	Westerly	23,359	Administrative Staff	1	Data Entry Specialist	\$ 19.00	No			20	Other	No	No
Westerly Public Library	Westerly	23,359	Adult Services	1	Head of Adult Services	\$ 38.93	Yes	\$ 70,853		35	MLS	Yes	No
Westerly Public Library	Westerly	23,359	Adult Services	1	Adult Services Librarian	\$ 29.87	Yes	\$ 54,363		35	MLS	No	No
Westerly Public Library	Westerly	23,359	Adult Services	1	Local History & Special Collections Librarian	\$ 37.15	Yes	\$ 67,613		35	MLS	No	No
Westerly Public Library	Westerly	23,359	Adult Services	1	Adult Services Associate	\$ 17.81	No			20	HS Diploma	No	No
Westerly Public Library	Westerly	23,359	Adult Services	1	Adult Services Associate	\$ 17.29	No			20	HS Diploma	No	No
Westerly Public Library	Westerly	23,359	Assistant Director	1	Assistant Director	\$ 44.07	Yes	\$ 80,207		35	MLS	Yes	No
Westerly Public Library	Westerly	23,359	Borrower Services	1	Head of Public Services	\$ 32.00	Yes	\$ 58,240		35	Bachelor's	Yes	No
Westerly Public Library	Westerly	23,359	Borrower Services	1	Public Services Associate	\$ 23.13	No			35	Bachelor's	No	No
Westerly Public Library	Westerly	23,359	Borrower Services	4	Public Services Associate	\$ 16.75	No			20	HS Diploma	No	No
Westerly Public Library	Westerly	23,359	Children's Services	1	Kids Librarian	\$ 27.00	Yes	\$ 49,140		35	MLS	No	No
Westerly Public Library	Westerly	23,359	Children's Services	1	Tween Librarian	\$ 28.39	Yes	\$ 51,670		35	MLS	No	No
Westerly Public Library	Westerly	23,359	Collection Management	1	Collection Management Associate	\$ 25.91	No			35	HS Diploma	No	No
Westerly Public Library	Westerly	23,359	Collection Management	1	Collection Management Associate	\$ 20.56	No			35	HS Diploma	No	No
Westerly Public Library	Westerly	23,359	Digital Services	2	Public Services Associate	\$ 18.75	No			25	HS Diploma	No	No
Westerly Public Library	Westerly	23,359	Director	1	Executive Director	\$ 53.68	Yes	\$ 97,702	No	35	MLS	Yes	No
Westerly Public Library	Westerly	23,359	Facilities Maintenance	1	Facilities Manager	\$ 38.73	Yes	\$ 70,489		35	Other	Yes	No
Westerly Public Library	Westerly	23,359	Facilities Maintenance	1	Custodian	\$ 21.81	No			35	Other	No	No
Westerly Public Library	Westerly	23,359	Facilities Maintenance	1	Park Superintendent	\$ 49.61	Yes	\$ 90,290		35	Bachelor's	Yes	No
Westerly Public Library	Westerly	23,359	Facilities Maintenance	1	Head Groundskeeper	\$ 24.05	No			35	Other	No	No
Westerly Public Library	Westerly	23,359	Facilities Maintenance	1	Groundskeeper	\$ 18.75	No			20	Other	No	No
Westerly Public Library	Westerly	23,359	Facilities Maintenance	1	Groundskeeper	\$ 20.34	No			15	Other	No	No
Westerly Public Library	Westerly	23,359	Facilities Maintenance	1	Groundskeeper	\$ 20.34	No			15	Other	No	No
Westerly Public Library	Westerly	23,359	Information Technology	1	Technology & Innovation Coordinator	\$ 22.75	No			35	HS Diploma	No	No
Westerly Public Library	Westerly	23,359	Teen Services	1	Teen Librarian	\$ 27.00	Yes	\$ 49,140		35	MLS	No	No
Westerly Public Library	Westerly	23,359	Youth Services (Children & Teen)	1	Head of Youth Services	\$ 32.00	Yes	\$ 58,240		35	MLS	Yes	No
Westerly Public Library	Westerly	23,359	Youth Services (Children & Teen)	2	Youth Services Associate	\$ 16.75	No			20	HS Diploma	No	No
Westerly Public Library	Westerly	23,359	Youth Services (Children & Teen)	1	Youth Services Associate	\$ 17.29	No			35	Other	No	No
Woonsocket Harris Public Library	Woonsocket	43,240	Adult Services	1	Chief Information and Adult Services Librarian	\$ 33.24	No			35	MLS	Yes	No
Woonsocket Harris Public Library	Woonsocket	43,240	Adult Services	1	Reference and Adult Services Librarian	\$ 27.09	No			35	MLS	No	No
Woonsocket Harris Public Library	Woonsocket	43,240	Adult Services	1	Reader's Advisor	\$ 22.24	No			35	Bachelor's	No	No
Woonsocket Harris Public Library	Woonsocket	43,240	Adult Services	1	Reference Librarian Part-Time	\$ 18.00	No			19	MLS	No	Yes
Woonsocket Harris Public Library	Woonsocket	43,240	Assistant Director	1	Assistant Director/Technology Coordinator	\$ 35.63	Yes	\$ 64,840		35	MLS	Yes	No
Woonsocket Harris Public Library	Woonsocket	43,240	Borrower Services	1	Senior Library Assistant	\$ 21.89	No			35	HS Diploma	No	No
Woonsocket Harris Public Library	Woonsocket	43,240	Borrower Services	1	Junior Library Assistant	\$ 20.92	No			35	HS Diploma	No	No
Woonsocket Harris Public Library	Woonsocket	43,240	Borrower Services	1	Library Assistant Part-Time	\$ 17.00	No			19.5	HS Diploma	No	No
Woonsocket Harris Public Library	Woonsocket	43,240	Borrower Services	1	Library Assistant Part-Time	\$ 17.00	No			19.5	HS Diploma	No	Yes
Woonsocket Harris Public Library	Woonsocket	43,240	Children's Services	1	Children's Library Assistant Part-Time	\$ 17.00	No			19.5	HS Diploma	No	Yes
Woonsocket Harris Public Library	Woonsocket	43,240	Collection Management	1	Library Technical Aide	\$ 22.86	No			35	HS Diploma	No	No
Woonsocket Harris Public Library	Woonsocket	43,240	Collection Management	1	Paraprofessional	\$ 21.89	No			35	HS Diploma	No	No
Woonsocket Harris Public Library	Woonsocket	43,240	Digital Services	1	Computer Literacy Coordinator	\$ 21.50	No			4	Bachelor's	No	No
Woonsocket Harris Public Library	Woonsocket	43,240	Director	1	Library Director	\$ 40.00	Yes	\$ 72,800	No	35	MLS	Yes	No
Woonsocket Harris Public Library	Woonsocket	43,240	Facilities Maintenance	1	Janitor/Security	\$ 19.95	No			40	HS Diploma	No	No
Woonsocket Harris Public Library	Woonsocket	43,240	Page	2	Page	\$ 15.00	No			12	None	No	No
Woonsocket Harris Public Library	Woonsocket	43,240	Page	2	Page	\$ 15.00	No			12	None	No	Yes
Woonsocket Harris Public Library	Woonsocket	43,240	Teen Services	1	Young Adult Librarian	\$ 28.08	No			35	MLS	No	No
Woonsocket Harris Public Library	Woonsocket	43,240	Youth Services (Children & Teen)	1	Chief Children's and Youth Services Librarian	\$ 33.62	No			35	MLS	Yes	No

Staffing Summary by Library FY2025

Location	Municipality	Library Service Area Population	FTE = Full Time Equivalent 35 hours/week				Number of Staff	Number of Vacant Positions	Positions Requiring MLS	LSA Population to FTE ratio†
			ALA-MLS*	Total Librarians*	All Other Paid Staff	Total Paid Employees				
Barrington Public Library	Barrington	17,153	8.00	8.00	12.89	20.89	40	0	8	821
Rogers Free Library	Bristol	22,493	6.61	8.76	9.11	17.87	33	3	7	1,259
Jesse M. Smith Memorial Library	Burrillville	12,330	6.00	6.00	7.26	13.26	17	0	6	930
Pascoag Free Public Library	Burrillville	3,828	1.06	1.06	1.63	2.69	7	0	2	1,425
Adams Public Library	Central Falls	22,583	1.14	1.71	3.89	5.60	9	0	1	4,033
Cross' Mills Public Library	Charlestown	7,997	2.14	2.14	4.20	6.34	12	0	2	1,261
Coventry Public Library	Coventry	35,688	7.44	9.30	8.27	17.57	31	0	9	2,031
Cranston Public Library	Cranston	82,934	19.46	19.46	27.06	46.51	83	1	28	1,783
Cumberland Public Library	Cumberland	36,405	6.36	6.36	16.80	23.16	33	0	7	1,572
East Greenwich Free Library	East Greenwich	14,312	4.93	4.93	5.39	10.31	16	0	8	1,388
East Providence Public Library	East Providence	47,139	10.00	11.63	15.86	27.49	31	0	10	1,715
Exeter Public Library	Exeter	6,460	2.00	2.00	1.71	3.71	6	0	2	1,739
Libraries of Foster	Foster	4,469	1.14	1.54	2.83	4.37	11	0	1	1,022
Glocester Manton Free Public Library	Glocester	4,489	1.09	2.57	0.80	3.37	7	0	1	1,331
Harmony Library	Glocester	5,485	1.91	2.76	1.51	4.27	11	0	3	1,284
Ashaway Free Library	Hopkinton	3,778	1.23	1.23	1.20	2.43	6	0	1	1,556
Langworthy Public Library	Hopkinton	4,620	0.89	0.89	1.43	2.31	6	0	1	1,996
Jamestown Philomenian Library	Jamestown	5,559	3.43	3.43	4.97	8.40	12	1	3	662
Marian J. Mohr Memorial Library	Johnston	29,568	4.06	4.06	5.94	10.00	16	0	5	2,957
Lincoln Public Library	Lincoln	22,529	5.99	5.99	9.44	15.43	22	1	9	1,460
Brownell Library, Home of Little Compton	Little Compton	3,616	2.00	2.00	1.37	3.37	4	0	2	1,073
Middletown Public Library	Middletown	17,075	3.00	3.00	8.43	11.43	16	0	3	1,494
Maury Looijens Memorial Library	Narragansett	14,532	5.71	6.71	6.05	12.76	19	0	4	1,138
Island Free Library	New Shoreham	1,410	3.43	3.43	3.14	6.57	7	2	3	215
Newport Public Library	Newport	25,163	11.43	15.00	10.73	25.73	29	0	10	978
Davisville Free Library	North Kingstown	5,991	0.93	0.93	0.60	1.53	4	0	2	3,919
North Kingstown Free Library	North Kingstown	19,821	8.66	8.66	7.06	15.71	18	0	9	1,261
Willett Free Library	North Kingstown	1,920	0.71	0.71	0.89	1.60	3	0	1	1,200
Mayor Salvatore Mancini Union Free Library	North Providence	34,114	4.00	9.49	9.97	19.46	28	0	4	1,753
North Smithfield Public Library	North Smithfield	12,588	3.14	3.14	3.17	6.31	9	0	3	1,994
Pawtucket Public Library	Pawtucket	75,604	12.17	12.17	14.09	26.26	33	2	14	2,879
Portsmouth Free Public Library	Portsmouth	17,871	3.83	3.83	6.31	10.14	20	0	6	1,762
Community Libraries of Providence	Providence	131,744	27.14	27.14	51.74	78.89	75	6	25	1,670
Providence Public Library	Providence	59,190	15.57	15.57	49.37	64.94	72	9	16	911
Clark Memorial Library	Richmond	8,020	1.46	1.46	1.03	2.49	8	1	3	3,226
Hope Library	Scituate	4,230	1.71	3.17	3.26	6.43	12	1	4	658
North Scituate Public Library	Scituate	6,154	2.19	3.01	4.39	7.40	17	0	4	832
East Smithfield Public Library	Smithfield	9,476	3.57	3.57	8.17	11.74	18	0	4	807
Greenville Public Library	Smithfield	12,642	5.86	5.86	5.83	11.69	19	1	7	1,082
South Kingstown Public Library	South Kingstown	31,931	11.00	12.00	6.20	18.20	26	3	11	1,754
Tiverton Public Library	Tiverton	16,359	3.71	6.71	4.20	10.91	17	5	4	1,499
George Hail Free Library	Warren	11,147	3.14	3.14	2.86	6.00	12	0	4	1,858
Pontiac Free Library	Warwick	9,631	0.50	0.50	1.46	1.96	6	0	1	4,921
Warwick Public Library	Warwick	73,192	15.56	15.56	25.49	41.04	52	5	16	1,783
Louitt Library	West Greenwich	6,528	2.00	2.00	2.77	4.77	10	0	2	1,368
West Warwick Public Library	West Warwick	31,012	6.54	6.54	10.69	17.23	24	0	6	1,800
Westerly Public Library	Westerly	23,359	9.00	9.00	22.14	31.14	37	1	9	750
Woonsocket Harris Public Library	Woonsocket	43,240	5.54	8.54	8.30	16.84	21	5	7	2,567
Total		1,097,379	268.39	296.66	421.88	718.54	1,025	47	298	1,527
Average		22,862	5.59	6.18	8.79	14.97	21.35	1	6	1,654
Median		14,422	3.77	3.94	5.89	10.61	17.00	0	4	1,477

Notes
 * **ALA-MLS** - This data element includes librarians with master's degrees from programs of library and information studies accredited by the American Library Association.
 * **Total Librarians** - This data element includes persons with the title of librarian who do paid work that usually requires professional training and skill in the theoretical or scientific aspects of library work, or both, as distinct from its mechanical or clerical aspect. This data element also includes ALA-MLS.
 † **Population to FTE ratio** (LSA Population / Total Paid Employees FTE) - This output measure shows how many people are served by one FTE employee.

Staffing Summary by Population Groups FY2025

Location	Municipality	Library Service Area Population	FTE = Full Time Equivalent 35 hours/week				Number of Staff	Number of Vacant Positions	Positions Requiring MLS	LSA Population to FTE ratio
			ALA-MLS*	Total Librarians*	All Other Paid Staff	Total Paid Employees				
Libraries serving populations 40,000+										
Community Libraries of Providence	Providence	131,744	27.14	27.14	51.74	78.89	75	6	25	1,670
Cranston Public Library	Cranston	82,934	19.46	19.46	27.06	46.51	83	1	28	1,783
Pawtucket Public Library	Pawtucket	75,604	12.17	12.17	14.09	26.26	33	2	14	2,879
Warwick Public Library	Warwick	73,192	15.56	15.56	25.49	41.04	52	5	16	1,783
Providence Public Library	Providence	59,190	15.57	15.57	49.37	64.94	72	9	16	911
East Providence Public Library	East Providence	47,139	10.00	11.63	15.86	27.49	31	0	10	1,715
Woonsocket Harris Public Library	Woonsocket	43,240	5.54	8.54	8.30	16.84	21	5	7	2,567
Libraries serving populations 20,000-39,999										
Cumberland Public Library	Cumberland	36,405	6.36	6.36	16.80	23.16	33	0	7	1,572
Coventry Public Library	Coventry	35,688	7.44	9.30	8.27	17.57	31	0	9	2,031
Mayor Salvatore Mancini Union Free Library	North Providence	34,114	4.00	9.49	9.97	19.46	28	0	4	1,753
South Kingstown Public Library	South Kingstown	31,931	11.00	12.00	6.20	18.20	26	3	11	1,754
West Warwick Public Library	West Warwick	31,012	6.54	6.54	10.69	17.23	24	0	6	1,800
Marian J. Mohr Memorial Library	Johnston	29,568	4.06	4.06	5.94	10.00	16	0	5	2,957
Newport Public Library	Newport	25,163	11.43	15.00	10.73	25.73	29	0	10	978
Westerly Public Library	Westerly	23,359	9.00	9.00	22.14	31.14	37	1	9	750
Adams Public Library	Central Falls	22,583	1.14	1.71	3.89	5.60	9	0	1	4,033
Lincoln Public Library	Lincoln	22,529	5.99	5.99	9.44	15.43	22	1	9	1,460
Rogers Free Library	Bristol	22,493	6.61	8.76	9.11	17.87	33	3	7	1,259
Libraries serving populations 10,000-19,999										
North Kingstown Free Library	North Kingstown	19,821	8.66	8.66	7.06	15.71	18	0	9	1,261
Portsmouth Free Public Library	Portsmouth	17,871	3.83	3.83	6.31	10.14	20	0	6	1,762
Barrington Public Library	Barrington	17,153	8.00	8.00	12.89	20.89	40	0	8	821
Middletown Public Library	Middletown	17,075	3.00	3.00	8.43	11.43	16	0	3	1,494
Tiverton Public Library	Tiverton	16,359	3.71	6.71	4.20	10.91	17	5	4	1,499
Maury Loontjens Memorial Library	Narragansett	14,532	5.71	6.71	6.05	12.76	19	0	4	1,138
East Greenwich Free Library	East Greenwich	14,312	4.93	4.93	5.39	10.31	16	0	8	1,388
Greenville Public Library	Smithfield	12,642	5.86	5.86	5.83	11.69	19	1	7	1,082
North Smithfield Public Library	North Smithfield	12,588	3.14	3.14	3.17	6.31	9	0	3	1,994
Jesse M. Smith Memorial Library	Burrillville	12,330	6.00	6.00	7.26	13.26	17	0	6	930
George Hail Free Library	Warren	11,147	3.14	3.14	2.86	6.00	12	0	4	1,858

Staffing Summary by Population Groups FY2025

Location	Municipality	Library Service Area Population	FTE = Full Time Equivalent 35 hours/week				Number of Staff	Number of Vacant Positions	Positions Requiring MLS	LSA Population to FTE ratio†
			ALA-MLS*	Total Librarians*	All Other Paid Staff	Total Paid Employees				
Libraries serving populations 5,000-9,999										
Pontiac Free Library	Warwick	9,631	0.50	0.50	1.46	1.96	6	0	1	4,921
East Smithfield Public Library	Smithfield	9,476	3.57	3.57	8.17	11.74	18	0	4	807
Clark Memorial Library	Richmond	8,020	1.46	1.46	1.03	2.49	8	1	3	3,226
Cross' Mills Public Library	Charlestown	7,997	2.14	2.14	4.20	6.34	12	0	2	1,261
Louittit Library	West Greenwich	6,528	2.00	2.00	2.77	4.77	10	0	2	1,368
Exeter Public Library	Exeter	6,460	2.00	2.00	1.71	3.71	6	0	2	1,739
North Scituate Public Library	Scituate	6,154	2.19	3.01	4.39	7.40	17	0	4	832
Davisville Free Library	North Kingstown	5,991	0.93	0.93	0.60	1.53	4	0	2	3,919
Jamestown Philomenian Library	Jamestown	5,559	3.43	3.43	4.97	8.40	12	1	3	662
Harmony Library	Glocester	5,485	1.91	2.76	1.51	4.27	11	0	3	1,284
Libraries serving populations below 5,000										
Langworthy Public Library	Hopkinton	4,620	0.89	0.89	1.43	2.31	6	0	1	1,996
Glocester Manton Free Public Library	Glocester	4,489	1.09	2.57	0.80	3.37	7	0	1	1,331
Libraries of Foster	Foster	4,469	1.14	1.54	2.83	4.37	11	0	1	1,022
Hope Library	Scituate	4,230	1.71	3.17	3.26	6.43	12	1	4	658
Pascoag Free Public Library	Burrillville	3,828	1.06	1.06	1.63	2.69	7	0	2	1,425
Ashaway Free Library	Hopkinton	3,778	1.23	1.23	1.20	2.43	6	0	1	1,556
Brownell Library, Home of Little Compton	Little Compton	3,616	2.00	2.00	1.37	3.37	4	0	2	1,073
Willett Free Library	North Kingstown	1,920	0.71	0.71	0.89	1.60	3	0	1	1,200
Island Free Library	New Shoreham	1,410	3.43	3.43	3.14	6.57	7	2	3	215
Total		1,097,379	268.39	296.66	421.88	718.54	1,025	47	298	1,527
Average		22,862	5.59	6.18	8.79	14.97	21.35	1	6	1,654
Median		14,422	3.77	3.94	5.89	10.61	17.00	0	4	1,477

Notes
 * **ALA-MLS** - This data element includes librarians with master's degrees from programs of library and information studies accredited by the American Library Association.
 * **Total Librarians** - This data element includes persons with the title of librarian who do paid work that usually requires professional training and skill in the theoretical or scientific aspects of library work, or both, as distinct from its mechanical or clerical aspect. This data element also includes ALA-MLS.
 † **Population to FTE ratio** (LSA Population / Total Paid Employees FTE) - This output measure shows how many people are served by one FTE employee.

Staffing Measures by Library FY2025

Location	Municipality	Population	Total Operating Expenditures	Positions Requiring MLS	Total Paid Employees FTE (state)*	Number of Staff	% of staff positions requiring MLS	Salary Expenditures	Employee Benefits Expenditures	Staff Expenditures (+J) as % of Total Operating Expenditures	Staff Expenditures per capita	Staff Expenditures per FTE
Barrington Public Library	Barrington	17,153	\$ 1,846,561	8	20.89	40	20%	\$ 1,213,499	\$ 409,250	88%	\$ 94.60	\$ 77,697
Rogers Free Library	Bristol	22,493	\$ 1,130,298	7	17.87	33	21%	\$ 749,032	\$ 176,942	82%	\$ 41.17	\$ 51,813
Jesse M. Smith Memorial Library	Burrillville	12,330	\$ 1,091,252	6	13.26	17	35%	\$ 651,283	\$ 188,878	77%	\$ 68.14	\$ 63,374
Pascoag Free Public Library	Burrillville	3,828	\$ 150,414	2	2.69	7	29%	\$ 88,211	\$ 16,439	70%	\$ 27.34	\$ 38,965
Adams Public Library	Central Falls	22,583	\$ 220,573	1	5.60	9	11%	\$ 144,816	\$ -	66%	\$ 6.41	\$ 25,860
Cross' Mills Public Library	Charlestown	7,997	\$ 439,391	2	6.34	12	17%	\$ 279,364	\$ 39,894	73%	\$ 39.92	\$ 50,333
Coventry Public Library	Coventry	35,688	\$ 1,420,253	9	17.57	31	29%	\$ 838,006	\$ 184,682	72%	\$ 28.66	\$ 58,202
Cranston Public Library	Cranston	82,934	\$ 4,206,255	28	46.51	83	34%	\$ 2,687,602	\$ 646,996	79%	\$ 40.21	\$ 71,690
Cumberland Public Library	Cumberland	36,405	\$ 1,923,710	7	23.16	33	21%	\$ 1,097,182	\$ 350,790	75%	\$ 39.77	\$ 62,528
East Greenwich Free Library	East Greenwich	14,312	\$ 802,165	8	10.31	16	50%	\$ 542,422	\$ 48,492	74%	\$ 41.29	\$ 57,291
East Providence Public Library	East Providence	47,139	\$ 2,776,161	10	27.49	31	32%	\$ 1,591,972	\$ 785,491	86%	\$ 50.44	\$ 86,498
Exeter Public Library	Exeter	6,460	\$ 325,650	2	3.71	6	33%	\$ 163,330	\$ 57,821	68%	\$ 34.23	\$ 59,541
Libraries of Foster	Foster	4,469	\$ 245,112	1	4.37	11	9%	\$ 173,556	\$ 6,523	73%	\$ 40.30	\$ 41,195
Glocester Manton Free Public Library	Glocester	4,489	\$ 243,877	1	3.37	7	14%	\$ 140,981	\$ 35,994	73%	\$ 39.42	\$ 52,493
Harmony Library	Glocester	5,485	\$ 305,853	3	4.27	11	27%	\$ 166,881	\$ 19,447	61%	\$ 33.97	\$ 43,622
Ashaway Free Library	Hopkinton	3,778	\$ 136,220	1	2.43	6	17%	\$ 73,410	\$ 6,396	59%	\$ 21.12	\$ 32,861
Langworthy Public Library	Hopkinton	4,620	\$ 123,939	1	2.31	6	17%	\$ 77,565	\$ 6,553	68%	\$ 18.21	\$ 36,347
Jamestown Philomenian Library	Jamestown	5,559	\$ 613,530	3	8.40	12	25%	\$ 332,778	\$ 78,257	67%	\$ 73.94	\$ 48,933
Marian J. Mohr Memorial Library	Johnston	29,568	\$ 700,555	5	10.00	16	31%	\$ 355,973	\$ 216,395	82%	\$ 19.36	\$ 57,237
Lincoln Public Library	Lincoln	22,529	\$ 1,369,790	9	15.43	22	41%	\$ 764,947	\$ 279,386	76%	\$ 46.36	\$ 67,688
Brownell Library, Home of Little Compton	Little Compton	3,616	\$ 289,984	2	3.37	4	50%	\$ 167,434	\$ 48,090	74%	\$ 59.60	\$ 63,927
Middletown Public Library	Middletown	17,075	\$ 957,250	3	11.43	16	19%	\$ 474,383	\$ 107,540	61%	\$ 34.08	\$ 50,918
Maury Loojtjens Memorial Library	Narragansett	14,532	\$ 1,215,108	4	12.76	19	21%	\$ 496,434	\$ 359,532	70%	\$ 58.90	\$ 67,059
Island Free Library	New Shoreham	1,410	\$ 614,813	3	6.57	7	43%	\$ 326,938	\$ 106,182	70%	\$ 307.18	\$ 65,910
Newport Public Library	Newport	25,163	\$ 2,588,642	10	25.73	29	34%	\$ 1,272,633	\$ 380,412	64%	\$ 65.69	\$ 64,249
Davisville Free Library	North Kingstown	5,991	\$ 92,788	2	1.53	4	50%	\$ 53,330	\$ -	57%	\$ 8.90	\$ 34,889
North Kingstown Free Library	North Kingstown	19,821	\$ 1,717,092	9	15.71	18	50%	\$ 851,737	\$ 383,202	72%	\$ 62.30	\$ 78,587
Willett Free Library	North Kingstown	1,920	\$ 123,652	1	1.60	3	33%	\$ 78,799	\$ -	64%	\$ 41.04	\$ 49,249
Mayor Salvatore Mancini Union Free Library	North Providence	34,114	\$ 1,105,422	4	19.46	28	14%	\$ 800,284	\$ -	72%	\$ 23.46	\$ 41,131
North Smithfield Public Library	North Smithfield	12,588	\$ 525,342	3	6.31	9	33%	\$ 295,822	\$ 38,015	64%	\$ 26.52	\$ 52,870
Pawtucket Public Library	Pawtucket	75,604	\$ 2,742,459	14	26.26	33	42%	\$ 1,451,646	\$ 713,011	79%	\$ 28.63	\$ 82,441
Portsmouth Free Public Library	Portsmouth	17,871	\$ 758,450	6	10.14	20	30%	\$ 440,220	\$ 98,045	71%	\$ 30.12	\$ 53,068
Community Libraries of Providence	Providence	131,744	\$ 6,389,978	25	78.89	75	33%	\$ 3,496,133	\$ 1,043,429	71%	\$ 34.46	\$ 57,546
Providence Public Library	Providence	59,190	\$ 8,828,660	16	64.94	72	22%	\$ 3,921,284	\$ 691,464	52%	\$ 77.93	\$ 71,028
Clark Memorial Library	Richmond	8,020	\$ 168,199	3	2.49	8	38%	\$ 96,012	\$ 8,277	62%	\$ 13.00	\$ 41,955
Hope Library	Scituate	4,230	\$ 375,575	4	6.43	12	33%	\$ 226,814	\$ 17,904	65%	\$ 57.85	\$ 38,067
North Scituate Public Library	Scituate	6,154	\$ 404,144	4	7.40	17	24%	\$ 268,559	\$ 20,545	72%	\$ 46.98	\$ 39,068
East Smithfield Public Library	Smithfield	9,476	\$ 822,671	4	11.74	18	22%	\$ 507,463	\$ 79,589	71%	\$ 61.95	\$ 49,992
Greenville Public Library	Smithfield	12,642	\$ 1,171,063	7	11.69	19	37%	\$ 554,756	\$ 179,524	63%	\$ 58.08	\$ 62,836
South Kingstown Public Library	South Kingstown	31,931	\$ 1,404,052	11	18.20	26	42%	\$ 857,391	\$ 291,165	82%	\$ 35.97	\$ 63,107
Tiverton Public Library	Tiverton	16,359	\$ 835,605	4	10.91	17	24%	\$ 475,954	\$ 118,283	71%	\$ 36.32	\$ 54,446
George Hail Free Library	Warren	11,147	\$ 390,154	4	6.00	12	33%	\$ 259,167	\$ 12,112	70%	\$ 24.34	\$ 45,213
Pontiac Free Library	Warwick	9,631	\$ 144,774	1	1.96	6	17%	\$ 76,301	\$ -	53%	\$ 7.92	\$ 38,986
Warwick Public Library	Warwick	73,192	\$ 4,640,677	16	41.04	52	31%	\$ 2,081,936	\$ 1,241,111	72%	\$ 45.40	\$ 80,965
Louitt Library	West Greenwich	6,528	\$ 389,763	2	4.77	10	20%	\$ 199,925	\$ 59,655	67%	\$ 39.76	\$ 54,403
West Warwick Public Library	West Warwick	31,012	\$ 1,256,737	6	17.23	24	25%	\$ 765,416	\$ 187,556	76%	\$ 30.73	\$ 55,313
Westerly Public Library	Westerly	23,359	\$ 2,951,001	9	31.14	37	24%	\$ 1,617,699	\$ 304,229	65%	\$ 82.28	\$ 61,713
Woonsocket Harris Public Library	Woonsocket	43,240	\$ 1,338,368	7	16.84	21	33%	\$ 665,679	\$ 341,219	75%	\$ 23.29	\$ 59,782
Total		1,097,379	\$ 64,313,962	298	718.54	1,025	29%	\$ 34,912,959	\$ 10,384,717	70%	\$ 41.28	\$ 63,042
Average		22,862	\$ 1,339,874	6	14.97	21	29%	\$ 727,353	\$ 216,348	70%	\$ 46.41	\$ 55,477
Median		14,422	\$ 812,418	4	10.61	17	30%	\$ 475,169	\$ 102,114	71%	\$ 39.77	\$ 54,880

Notes
 * Total Paid Employees FTE (state) - This is the calculation of the number of Full Time Equivalent employees using 35 hours per week as the measurement of full time. (Hours per week for all paid staff / 35 hours per week)

Staffing Measures by Population Groups FY2025

Location	Municipality	Population	Total Operating Expenditures	Positions Requiring MLS	Total Paid Employees FTE (state)*	Number of Staff	% of staff positions requiring MLS	Salary Expenditures	Employee Benefits Expenditures	Staff Expenditures (I+J) as % of Total Operating Expenditures	Staff Expenditures per capita	Staff Expenditures per FTE
Libraries serving populations 40,000+												
Community Libraries of Providence	Providence	131,744	\$ 6,389,978	25	78.89	75	33%	\$ 3,496,133	\$ 1,043,429	71%	\$ 34.46	\$ 57,546
Cranston Public Library	Cranston	82,934	\$ 4,206,255	28	46.51	83	34%	\$ 2,687,602	\$ 646,996	79%	\$ 40.21	\$ 71,690
Pawtucket Public Library	Pawtucket	75,604	\$ 2,742,459	14	26.26	33	42%	\$ 1,451,646	\$ 713,011	79%	\$ 28.63	\$ 82,441
Warwick Public Library	Warwick	73,192	\$ 4,640,677	16	41.04	52	31%	\$ 2,081,936	\$ 1,241,111	72%	\$ 45.40	\$ 80,965
Providence Public Library	Providence	59,190	\$ 8,828,660	16	64.94	72	22%	\$ 3,921,284	\$ 691,464	52%	\$ 77.93	\$ 71,028
East Providence Public Library	East Providence	47,139	\$ 2,776,161	10	27.49	31	32%	\$ 1,591,972	\$ 785,491	86%	\$ 50.44	\$ 86,498
Woonsocket Harris Public Library	Woonsocket	43,240	\$ 1,338,368	7	16.84	21	33%	\$ 665,679	\$ 341,219	75%	\$ 23.29	\$ 59,782
Libraries serving populations 20,000-39,999												
Cumberland Public Library	Cumberland	36,405	\$ 1,923,710	7	23.16	33	21%	\$ 1,097,182	\$ 350,790	75%	\$ 39.77	\$ 62,528
Coventry Public Library	Coventry	35,688	\$ 1,420,253	9	17.57	31	29%	\$ 838,006	\$ 184,682	72%	\$ 28.66	\$ 58,202
Mayor Salvatore Mancini Union Free Library	North Providence	34,114	\$ 1,105,422	4	19.46	28	14%	\$ 800,284	\$ -	72%	\$ 23.46	\$ 41,131
South Kingstown Public Library	South Kingstown	31,931	\$ 1,404,052	11	18.20	26	42%	\$ 857,391	\$ 291,165	82%	\$ 35.97	\$ 63,107
West Warwick Public Library	West Warwick	31,012	\$ 1,256,737	6	17.23	24	25%	\$ 765,416	\$ 187,556	76%	\$ 30.73	\$ 55,313
Marian J. Mohr Memorial Library	Johnston	29,568	\$ 700,555	5	10.00	16	31%	\$ 355,973	\$ 216,395	82%	\$ 19.36	\$ 57,237
Newport Public Library	Newport	25,163	\$ 2,588,642	10	25.73	29	34%	\$ 1,272,633	\$ 380,412	64%	\$ 65.69	\$ 64,249
Westerly Public Library	Westerly	23,359	\$ 2,951,001	9	31.14	37	24%	\$ 1,617,699	\$ 304,229	65%	\$ 82.28	\$ 61,713
Adams Public Library	Central Falls	22,583	\$ 220,573	1	5.60	9	11%	\$ 144,816	\$ -	66%	\$ 6.41	\$ 25,860
Lincoln Public Library	Lincoln	22,529	\$ 1,369,790	9	15.43	22	41%	\$ 764,947	\$ 279,386	76%	\$ 46.36	\$ 67,688
Rogers Free Library	Bristol	22,493	\$ 1,130,298	7	17.87	33	21%	\$ 749,032	\$ 176,942	82%	\$ 41.17	\$ 51,813
Libraries serving populations 10,000-19,999												
North Kingstown Free Library	North Kingstown	19,821	\$ 1,717,092	9	15.71	18	50%	\$ 851,737	\$ 383,202	72%	\$ 62.30	\$ 78,587
Portsmouth Free Public Library	Portsmouth	17,871	\$ 758,450	6	10.14	20	30%	\$ 440,220	\$ 98,045	71%	\$ 30.12	\$ 53,068
Barrington Public Library	Barrington	17,153	\$ 1,846,561	8	20.89	40	20%	\$ 1,213,499	\$ 409,250	88%	\$ 94.60	\$ 77,697
Middletown Public Library	Middletown	17,075	\$ 957,250	3	11.43	16	19%	\$ 474,383	\$ 107,540	61%	\$ 34.08	\$ 50,918
Tiverton Public Library	Tiverton	16,359	\$ 835,605	4	10.91	17	24%	\$ 475,954	\$ 118,283	71%	\$ 36.32	\$ 54,446
Maury Lontjens Memorial Library	Narragansett	14,532	\$ 1,215,108	4	12.76	19	21%	\$ 496,434	\$ 359,532	70%	\$ 58.90	\$ 67,059
East Greenwich Free Library	East Greenwich	14,312	\$ 802,165	8	10.31	16	50%	\$ 542,422	\$ 48,492	74%	\$ 41.29	\$ 57,291
Greenville Public Library	Smithfield	12,642	\$ 1,171,063	7	11.69	19	37%	\$ 554,756	\$ 179,524	63%	\$ 58.08	\$ 62,836
North Smithfield Public Library	North Smithfield	12,588	\$ 525,342	3	6.31	9	33%	\$ 295,822	\$ 38,015	64%	\$ 26.52	\$ 52,870
Jesse M. Smith Memorial Library	Burrillville	12,330	\$ 1,091,252	6	13.26	17	35%	\$ 651,283	\$ 188,878	77%	\$ 68.14	\$ 63,374
George Hail Free Library	Warren	11,147	\$ 390,154	4	6.00	12	33%	\$ 259,167	\$ 12,112	70%	\$ 24.34	\$ 45,213

Staffing Measures by Population Groups FY2025

Location	Municipality	Population	Total Operating Expenditures	Positions Requiring MLS	Total Paid Employees FTE (state)*	Number of Staff	% of staff positions requiring MLS	Salary Expenditures	Employee Benefits Expenditures	Staff Expenditures (I+J) as % of Total Operating Expenditures	Staff Expenditures per capita	Staff Expenditures per FTE
Libraries serving populations 5,000-9,999												
Pontiac Free Library	Warwick	9,631	\$ 144,774	1	1.96	6	17%	\$ 76,301	\$ -	53%	\$ 7.92	\$ 38,986
East Smithfield Public Library	Smithfield	9,476	\$ 822,671	4	11.74	18	22%	\$ 507,463	\$ 79,589	71%	\$ 61.95	\$ 49,992
Clark Memorial Library	Richmond	8,020	\$ 168,199	3	2.49	8	38%	\$ 96,012	\$ 8,277	62%	\$ 13.00	\$ 41,955
Cross' Mills Public Library	Charlestown	7,997	\$ 439,391	2	6.34	12	17%	\$ 279,364	\$ 39,894	73%	\$ 39.92	\$ 50,333
Louittit Library	West Greenwich	6,528	\$ 389,763	2	4.77	10	20%	\$ 199,925	\$ 59,655	67%	\$ 39.76	\$ 54,403
Exeter Public Library	Exeter	6,460	\$ 325,650	2	3.71	6	33%	\$ 163,330	\$ 57,821	68%	\$ 34.23	\$ 59,541
North Scituate Public Library	Scituate	6,154	\$ 404,144	4	7.40	17	24%	\$ 268,559	\$ 20,545	72%	\$ 46.98	\$ 39,068
Davisville Free Library	North Kingstown	5,991	\$ 92,768	2	1.53	4	50%	\$ 53,330	\$ -	57%	\$ 8.90	\$ 34,889
Jamestown Philomenian Library	Jamestown	5,559	\$ 613,530	3	8.40	12	25%	\$ 332,778	\$ 78,257	67%	\$ 73.94	\$ 48,933
Harmony Library	Glocester	5,485	\$ 305,853	3	4.27	11	27%	\$ 166,881	\$ 19,447	61%	\$ 33.97	\$ 43,622
Libraries serving populations below 5,000												
Langworthy Public Library	Hopkinton	4,620	\$ 123,939	1	2.31	6	17%	\$ 77,565	\$ 6,553	68%	\$ 18.21	\$ 36,347
Glocester Manton Free Public Library	Glocester	4,489	\$ 243,877	1	3.37	7	14%	\$ 140,981	\$ 35,994	73%	\$ 39.42	\$ 52,493
Libraries of Foster	Foster	4,469	\$ 245,112	1	4.37	11	9%	\$ 173,556	\$ 6,523	73%	\$ 40.30	\$ 41,195
Hope Library	Scituate	4,230	\$ 375,575	4	6.43	12	33%	\$ 226,814	\$ 17,904	65%	\$ 57.85	\$ 38,067
Pascoag Free Public Library	Burrillville	3,828	\$ 150,414	2	2.69	7	29%	\$ 88,211	\$ 16,439	70%	\$ 27.34	\$ 38,965
Ashaway Free Library	Hopkinton	3,778	\$ 136,220	1	2.43	6	17%	\$ 73,410	\$ 6,396	59%	\$ 21.12	\$ 32,861
Brownell Library, Home of Little Compton	Little Compton	3,616	\$ 289,984	2	3.37	4	50%	\$ 167,434	\$ 48,090	74%	\$ 59.60	\$ 63,927
Willett Free Library	North Kingstown	1,920	\$ 123,652	1	1.60	3	33%	\$ 78,799	\$ -	64%	\$ 41.04	\$ 49,249
Island Free Library	New Shoreham	1,410	\$ 614,813	3	6.57	7	43%	\$ 326,938	\$ 106,182	70%	\$ 307.18	\$ 65,910
Total		1,097,379	\$ 64,313,962	298	718.54	1,025	29%	\$ 34,912,959	\$ 10,384,717	70%	\$ 41.28	\$ 63,042
Average		22,862	\$ 1,339,874	6	14.97	21	29%	\$ 727,353	\$ 216,348	70%	\$ 46.41	\$ 55,477
Median		14,422	\$ 812,418	4	10.61	17	30%	\$ 475,169	\$ 102,114	71%	\$ 39.77	\$ 54,880

Notes
 * Total Paid Employees FTE (state) - This is the calculation of the number of Full Time Equivalent employees using 35 hours per week as the measurement of full time. (Hours per week for all paid staff / 35 hours per week)

Libraries by Total Square Footage FY2025

Location	Municipality	LSA Population	Total Square Footage	Number of Outlets	Total Paid Employees FTE (35 hrs)	Number of Staff
More than 50,000 sqft		406,824	431,084	22	285.69	352
Providence Public Library	Providence	59,190	116,000	1	64.94	72
Community Libraries of Providence	Providence	131,744	82,247	9	78.89	75
Warwick Public Library	Warwick	73,192	67,941	4	41.04	52
Cranston Public Library	Cranston	82,934	59,686	6	46.51	83
Cumberland Public Library	Cumberland	36,405	55,210	1	23.16	33
Westerly Public Library	Westerly	23,359	50,000	1	31.14	37
25,000-49,999 sqft		332,098	328,898	13	198.39	274
Newport Public Library	Newport	25,163	47,459	1	25.73	29
Pawtucket Public Library	Pawtucket	75,604	42,351	1	26.26	33
Mayor Salvatore Mancini Union Free Library	North Providence	34,114	37,650	1	19.46	28
East Providence Public Library	East Providence	47,139	36,140	3	27.49	31
Barrington Public Library	Barrington	17,153	30,000	1	20.89	40
West Warwick Public Library	West Warwick	31,012	30,000	1	17.23	24
Rogers Free Library	Bristol	22,493	28,357	1	17.87	33
North Kingstown Free Library	North Kingstown	19,821	26,000	1	15.71	18
Woonsocket Harris Public Library	Woonsocket	43,240	25,899	1	16.84	21
Tiverton Public Library	Tiverton	16,359	25,042	2	10.91	17
10,000 - 24,999 sqft		223,513	189,023	15	150.94	232
Jesse M. Smith Memorial Library	Burrillville	12,330	24,900	1	13.26	17
South Kingstown Public Library	South Kingstown	31,931	23,600	3	18.20	26
Maury Loontjens Memorial Library	Narragansett	14,532	18,493	1	12.76	19
Jamestown Philomenian Library	Jamestown	5,559	16,076	1	8.40	12
Portsmouth Free Public Library	Portsmouth	17,871	15,030	1	10.14	20
Greenville Public Library	Smithfield	12,642	14,575	1	11.69	19
Lincoln Public Library	Lincoln	22,529	14,280	1	15.43	22
Coventry Public Library	Coventry	35,688	13,200	2	17.57	31
East Smithfield Public Library	Smithfield	9,476	12,826	1	11.74	18
Middletown Public Library	Middletown	17,075	12,743	1	11.43	16
East Greenwich Free Library	East Greenwich	14,312	11,800	1	10.31	16
Marian J. Mohr Memorial Library	Johnston	29,568	11,500	1	10.00	16
5,000 - 9,999 sqft		89,071	73,620	11	60.79	112
Island Free Library	New Shoreham	1,410	9,445	1	6.57	7
Hope Library	Scituate	4,230	7,036	1	6.43	12
Harmony Library	Glocester	5,485	6,986	1	4.27	11
North Smithfield Public Library	North Smithfield	12,588	6,985	1	6.31	9
George Hail Free Library	Warren	11,147	6,760	1	6.00	12
Cross' Mills Public Library	Charlestown	7,997	6,707	1	6.34	12
Exeter Public Library	Exeter	6,460	6,400	1	3.71	6
Loutit Library	West Greenwich	6,528	6,351	1	4.77	10
North Scituate Public Library	Scituate	6,154	6,000	1	7.40	17
Glocester Manton Free Public Library	Glocester	4,489	5,950	1	3.37	7
Adams Public Library	Central Falls	22,583	5,000	1	5.60	9
Less than 5,000 sqft		45,873	27,157	10	22.74	55
Clark Memorial Library	Richmond	8,020	4,550	1	2.49	8
Pascoag Free Public Library	Burrillville	3,828	3,456	1	2.69	7
Libraries of Foster	Foster	4,469	3,406	2	4.37	11
Pontiac Free Library	Warwick	9,631	3,320	1	1.96	6
Ashaway Free Library	Hopkinton	3,778	2,887	1	2.43	6
Langworthy Public Library	Hopkinton	4,620	2,868	1	2.31	6
Brownell Library, Home of Little Compton	Little Compton	3,616	2,745	1	3.37	4
Davisville Free Library	North Kingstown	5,991	2,500	1	1.53	4
Willett Free Library	North Kingstown	1,920	1,425	1	1.60	3

Salary Ranges - State Summary FY2025

Job Category	Non-supervisor						Supervisor						Combined	
	No. of staff employed per category*	Vacancies	Average	Median	Low	High	No. of staff employed per category*	Vacancies	Average	Median	Low	High	Average	Median
Administrative Staff	47	2	\$ 26.87	\$ 25.85	\$ 15.00	\$ 40.94	15	2	\$ 40.82	\$ 39.53	\$ 19.17	\$ 64.28	\$ 30.24	\$ 28.58
Adult Services	88	7	\$ 24.61	\$ 23.38	\$ 15.00	\$ 40.36	46	1	\$ 32.36	\$ 32.97	\$ 16.72	\$ 50.15	\$ 27.45	\$ 27.04
Assistant Director	1	0	\$ 29.50	\$ 29.50	\$ 29.50	\$ 29.50	19	0	\$ 39.06	\$ 38.41	\$ 20.21	\$ 63.15	\$ 38.58	\$ 38.09
Borrower Services	301	6	\$ 17.96	\$ 16.91	\$ 15.00	\$ 30.20	37	2	\$ 25.31	\$ 25.16	\$ 15.00	\$ 47.23	\$ 18.79	\$ 17.00
Branch Manager	7	1	\$ 29.69	\$ 29.41	\$ 24.78	\$ 33.69	11	1	\$ 35.54	\$ 37.19	\$ 23.46	\$ 47.49	\$ 33.26	\$ 32.50
Children's Services	65	4	\$ 22.52	\$ 19.80	\$ 15.00	\$ 41.71	15	1	\$ 33.14	\$ 33.82	\$ 16.00	\$ 50.97	\$ 24.54	\$ 22.72
Collection Management	37	1	\$ 22.89	\$ 22.77	\$ 15.00	\$ 38.12	17	2	\$ 32.64	\$ 35.21	\$ 17.60	\$ 47.29	\$ 26.02	\$ 23.50
Digital Services	7	0	\$ 25.49	\$ 23.25	\$ 18.75	\$ 37.19	1	0	\$ 33.84	\$ 33.84	\$ 33.84	\$ 33.84	\$ 26.69	\$ 25.00
Director							48	0	\$ 43.06	\$ 41.50	\$ 24.00	\$ 85.08	\$ 43.06	\$ 41.50
Educator	11	1	\$ 27.38	\$ 26.46	\$ 15.00	\$ 50.00	6	0	\$ 31.53	\$ 35.49	\$ 18.50	\$ 37.23	\$ 28.84	\$ 26.67
Facilities Maintenance	62	5	\$ 21.09	\$ 20.15	\$ 15.00	\$ 39.01	10	0	\$ 34.35	\$ 30.97	\$ 22.26	\$ 49.95	\$ 23.16	\$ 21.23
Information Technology	15	1	\$ 30.04	\$ 35.76	\$ 15.00	\$ 51.25	7	0	\$ 29.18	\$ 29.84	\$ 18.54	\$ 37.38	\$ 29.75	\$ 30.65
Page	55	9	\$ 15.06	\$ 15.00	\$ 13.00	\$ 19.94							\$ 15.06	\$ 15.00
Teen Services	17	0	\$ 28.36	\$ 27.46	\$ 19.44	\$ 38.12	7	0	\$ 32.53	\$ 33.38	\$ 20.00	\$ 46.70	\$ 29.57	\$ 29.04
Youth Services (Children and Teen)	43	1	\$ 22.83	\$ 23.30	\$ 15.00	\$ 34.57	30	0	\$ 29.92	\$ 30.64	\$ 17.70	\$ 41.21	\$ 26.31	\$ 26.41
Totals	756	38					269	9						

Notes
Job Category - Definitions for each category are available on the Job Category Definitions tab.
*** Number of Staff Employed per Category** - Total number of individuals employed across public libraries within the state, according to the category in which their position was reported.
Hourly Rates - To enhance comparability, OLIS has calculated hourly wage rates, based on a 52-week work year, for positions where only annual salary information was provided.

Salary Ranges by Population Group FY2025

Size of Service Population	Job Category	Non-supervisor						Supervisor						Combined	
		No. of staff employed per category	Vacancies	Average	Median	Low	High	No. of staff employed per category	Vacancies	Average	Median	Low	High	Average	Median
40,000 +															
	Administrative Staff	23	1	\$ 30.10	\$ 30.05	\$ 15.00	\$ 40.94	12	2	\$ 42.76	\$ 41.10	\$ 29.50	\$ 64.28	\$ 34.44	\$ 32.42
	Adult Services	35	5	\$ 26.61	\$ 26.79	\$ 16.77	\$ 40.36	15	0	\$ 36.88	\$ 35.21	\$ 25.01	\$ 50.15	\$ 29.80	\$ 28.13
	Assistant Director							6	0	\$ 48.72	\$ 45.96	\$ 35.63	\$ 63.15	\$ 48.72	\$ 45.96
	Borrower Services	96	4	\$ 19.45	\$ 18.00	\$ 15.00	\$ 30.20	12	1	\$ 28.53	\$ 28.66	\$ 16.77	\$ 47.23	\$ 20.64	\$ 19.48
	Branch Manager	6	1	\$ 30.50	\$ 30.76	\$ 27.46	\$ 33.69	9	1	\$ 36.91	\$ 37.19	\$ 29.39	\$ 47.49	\$ 34.35	\$ 32.90
	Children's Services	13	1	\$ 29.38	\$ 28.77	\$ 15.00	\$ 41.71	6	0	\$ 38.74	\$ 36.20	\$ 33.82	\$ 50.97	\$ 32.34	\$ 35.21
	Collection Management	13	1	\$ 26.23	\$ 22.86	\$ 15.00	\$ 38.12	8	2	\$ 38.15	\$ 38.60	\$ 23.18	\$ 47.29	\$ 30.77	\$ 28.05
	Digital Services	2	0	\$ 29.34	\$ 29.34	\$ 21.50	\$ 37.19	1	0	\$ 33.84	\$ 33.84	\$ 33.84	\$ 33.84	\$ 30.84	\$ 33.84
	Director							7	0	\$ 59.61	\$ 55.29	\$ 40.00	\$ 85.08	\$ 59.61	\$ 55.29
	Educator	10	1	\$ 28.62	\$ 26.56	\$ 24.79	\$ 50.00	4	0	\$ 36.12	\$ 35.93	\$ 35.37	\$ 37.23	\$ 30.76	\$ 27.50
	Facilities Maintenance	24	3	\$ 21.39	\$ 20.17	\$ 15.00	\$ 39.01	4	0	\$ 33.33	\$ 30.56	\$ 22.26	\$ 49.95	\$ 23.23	\$ 21.03
	Information Technology	6	1	\$ 30.96	\$ 32.28	\$ 21.50	\$ 39.56	1	0	\$ 37.38	\$ 37.38	\$ 37.38	\$ 37.38	\$ 31.88	\$ 32.55
	Page	18	3	\$ 15.07	\$ 15.00	\$ 13.00	\$ 19.94							\$ 15.07	\$ 15.00
	Teen Services	8	0	\$ 30.93	\$ 31.40	\$ 19.80	\$ 38.12	3	0	\$ 38.87	\$ 35.21	\$ 34.70	\$ 46.70	\$ 33.09	\$ 34.70
	Youth Services (Children and Teen)	21	1	\$ 24.61	\$ 23.87	\$ 15.40	\$ 34.57	4	0	\$ 37.13	\$ 36.85	\$ 33.62	\$ 41.21	\$ 27.39	\$ 27.04
	Totals	275	22					92	6						
20,000-39,999															
	Administrative Staff	11	1	\$ 24.33	\$ 25.85	\$ 18.00	\$ 29.09	3	0	\$ 33.07	\$ 38.00	\$ 19.17	\$ 42.03	\$ 26.20	\$ 26.19
	Adult Services	24	1	\$ 23.38	\$ 21.67	\$ 15.00	\$ 37.15	16	1	\$ 31.78	\$ 31.22	\$ 20.00	\$ 40.50	\$ 27.01	\$ 26.53
	Assistant Director							5	0	\$ 38.49	\$ 37.77	\$ 34.07	\$ 44.07	\$ 38.49	\$ 37.77
	Borrower Services	82	2	\$ 16.92	\$ 17.00	\$ 15.00	\$ 23.13	11	1	\$ 26.38	\$ 26.54	\$ 17.00	\$ 32.00	\$ 18.52	\$ 17.15
	Branch Manager							2	0	\$ 29.37	\$ 29.37	\$ 23.46	\$ 35.28	\$ 29.37	\$ 29.37
	Children's Services	23	0	\$ 21.28	\$ 18.78	\$ 15.00	\$ 31.68	2	0	\$ 29.30	\$ 29.30	\$ 25.00	\$ 33.60	\$ 21.92	\$ 19.43
	Collection Management	11	0	\$ 21.19	\$ 22.00	\$ 15.00	\$ 28.45	5	0	\$ 28.45	\$ 30.26	\$ 18.00	\$ 36.42	\$ 23.61	\$ 23.44
	Digital Services	2	0	\$ 18.75	\$ 18.75	\$ 18.75	\$ 18.75							\$ 18.75	\$ 18.75
	Director							11	0	\$ 45.83	\$ 45.28	\$ 35.71	\$ 54.92	\$ 45.83	\$ 45.28
	Educator	1	0	\$ 15.00	\$ 15.00	\$ 15.00	\$ 15.00	1	0	\$ 26.21	\$ 26.21	\$ 26.21	\$ 26.21	\$ 20.61	\$ 20.61
	Facilities Maintenance	18	0	\$ 20.09	\$ 20.34	\$ 15.00	\$ 26.33	5	0	\$ 36.57	\$ 38.73	\$ 23.70	\$ 49.61	\$ 24.21	\$ 22.22
	Information Technology	6	0	\$ 30.90	\$ 30.65	\$ 15.00	\$ 51.25	3	0	\$ 25.76	\$ 26.41	\$ 18.54	\$ 32.34	\$ 28.97	\$ 28.53
	Page	13	2	\$ 15.12	\$ 15.00	\$ 15.00	\$ 15.45							\$ 15.12	\$ 15.00
	Teen Services	4	0	\$ 22.21	\$ 21.19	\$ 19.44	\$ 27.00	3	0	\$ 26.60	\$ 26.41	\$ 20.00	\$ 33.38	\$ 24.09	\$ 21.50
	Youth Services (Children and Teen)	14	0	\$ 20.58	\$ 17.99	\$ 15.00	\$ 30.13	12	0	\$ 30.76	\$ 32.03	\$ 20.06	\$ 38.41	\$ 26.24	\$ 28.14
	Totals	209	6					79	2						
10,000-19,999															
	Administrative Staff	6	0	\$ 23.41	\$ 22.62	\$ 18.50	\$ 32.84							\$ 23.41	\$ 22.62
	Adult Services	23	0	\$ 24.48	\$ 24.00	\$ 16.73	\$ 35.17	8	0	\$ 33.11	\$ 33.38	\$ 28.00	\$ 38.65	\$ 26.86	\$ 28.00
	Assistant Director							5	0	\$ 37.91	\$ 38.41	\$ 29.53	\$ 46.16	\$ 37.91	\$ 38.41
	Borrower Services	55	0	\$ 17.44	\$ 16.49	\$ 15.00	\$ 26.70	7	0	\$ 23.84	\$ 25.05	\$ 15.00	\$ 33.26	\$ 18.19	\$ 16.64
	Branch Manager	1	0	\$ 24.78	\$ 24.78	\$ 24.78	\$ 24.78							\$ 24.78	\$ 24.78
	Children's Services	19	2	\$ 21.09	\$ 20.12	\$ 15.00	\$ 30.77	5	0	\$ 33.41	\$ 33.52	\$ 25.47	\$ 38.65	\$ 23.66	\$ 21.96
	Collection Management	11	0	\$ 20.50	\$ 17.51	\$ 15.00	\$ 31.52	1	0	\$ 45.90	\$ 45.90	\$ 45.90	\$ 45.90	\$ 22.62	\$ 19.26
	Digital Services	1	0	\$ 31.52	\$ 31.52	\$ 31.52	\$ 31.52							\$ 31.52	\$ 31.52
	Director							11	0	\$ 46.72	\$ 47.12	\$ 36.85	\$ 55.78	\$ 46.72	\$ 47.12
	Educator							1	0	\$ 18.50	\$ 18.50	\$ 18.50	\$ 18.50	\$ 18.50	\$ 18.50
	Facilities Maintenance	11	1	\$ 19.72	\$ 18.54	\$ 15.00	\$ 25.91	1	0	\$ 27.34	\$ 27.34	\$ 27.34	\$ 27.34	\$ 20.36	\$ 18.87
	Information Technology	3	0	\$ 26.77	\$ 27.06	\$ 17.50	\$ 35.76	2	0	\$ 29.87	\$ 29.87	\$ 24.73	\$ 35.00	\$ 28.01	\$ 27.06
	Page	17	3	\$ 15.16	\$ 15.00	\$ 14.74	\$ 16.07							\$ 15.16	\$ 15.00
	Teen Services	5	0	\$ 29.17	\$ 27.46	\$ 26.15	\$ 35.16	1	0	\$ 31.32	\$ 31.32	\$ 31.32	\$ 31.32	\$ 29.52	\$ 28.73
	Youth Services (Children and Teen)	3	0	\$ 19.41	\$ 16.24	\$ 16.24	\$ 25.75	6	0	\$ 30.19	\$ 30.11	\$ 24.81	\$ 38.49	\$ 26.59	\$ 26.93
	Totals	155	6					48	0						

Salary Ranges by Population Group FY2025

Size of Service Population	Job Category	Non-supervisor						Supervisor						Combined	
		No. of staff employed per category	Vacancies	Average	Median	Low	High	No. of staff employed per category	Vacancies	Average	Median	Low	High	Average	Median
5,000-9,999															
	Administrative Staff	6	0	\$ 23.46	\$ 22.72	\$ 17.50	\$ 34.07								
	Adult Services	1	0	\$ 23.50	\$ 23.50	\$ 23.50	\$ 23.50	7	0	\$ 23.79	\$ 26.86	\$ 16.72	\$ 36.99	\$ 23.46	\$ 22.72
	Assistant Director	1	0	\$ 29.50	\$ 29.50	\$ 29.50	\$ 29.50	1	0	\$ 23.63	\$ 23.63	\$ 23.63	\$ 23.63	\$ 26.57	\$ 26.57
	Borrower Services	48	0	\$ 16.90	\$ 16.38	\$ 15.00	\$ 24.50	6	0	\$ 19.90	\$ 19.06	\$ 17.56	\$ 23.50	\$ 17.28	\$ 16.97
	Branch Manager														
	Children's Services	1	0	\$ 23.00	\$ 23.00	\$ 23.00	\$ 23.00	2	1	\$ 19.50	\$ 19.50	\$ 16.00	\$ 23.00	\$ 20.67	\$ 23.00
	Collection Management	2	0	\$ 22.41	\$ 22.41	\$ 19.00	\$ 25.82	1	0	\$ 18.40	\$ 18.40	\$ 18.40	\$ 18.40	\$ 21.07	\$ 19.00
	Digital Services														
	Director							10	0	\$ 35.19	\$ 38.11	\$ 24.00	\$ 40.61	\$ 35.19	\$ 38.11
	Educator														
	Facilities Maintenance	4	0	\$ 23.01	\$ 23.50	\$ 18.37	\$ 26.67							\$ 23.01	\$ 23.50
	Information Technology							1	0	\$ 29.84	\$ 29.84	\$ 29.84	\$ 29.84	\$ 29.84	\$ 29.84
	Page	5	1	\$ 14.80	\$ 15.00	\$ 14.00	\$ 15.00							\$ 14.80	\$ 15.00
	Teen Services														
	Youth Services (Children and Teen)	3	0	\$ 22.99	\$ 24.00	\$ 17.50	\$ 27.47	5	0	\$ 26.26	\$ 26.29	\$ 17.70	\$ 34.89	\$ 25.03	\$ 25.15
	Totals	71	1					33	1						
Below 5,000															
	Administrative Staff	1	0	\$ 21.50	\$ 21.50	\$ 21.50	\$ 21.50							\$ 21.50	\$ 21.50
	Adult Services	5	1	\$ 16.56	\$ 15.13	\$ 15.00	\$ 21.00							\$ 16.56	\$ 15.13
	Assistant Director							2	0	\$ 22.11	\$ 22.11	\$ 20.21	\$ 24.00	\$ 22.11	\$ 22.11
	Borrower Services	20	0	\$ 16.82	\$ 15.70	\$ 15.00	\$ 26.23	1	0	\$ 21.00	\$ 21.00	\$ 21.00	\$ 21.00	\$ 17.03	\$ 15.70
	Branch Manager														
	Children's Services	9	1	\$ 18.27	\$ 18.75	\$ 15.00	\$ 22.07							\$ 18.27	\$ 18.75
	Collection Management	1	0	\$ 20.00	\$ 20.00	\$ 20.00	\$ 20.00	2	0	\$ 21.59	\$ 21.59	\$ 17.60	\$ 25.57	\$ 21.06	\$ 20.00
	Digital Services	1	0	\$ 25.00	\$ 25.00	\$ 25.00	\$ 25.00							\$ 25.00	\$ 25.00
	Director							9	0	\$ 30.21	\$ 30.00	\$ 25.00	\$ 40.28	\$ 30.21	\$ 30.00
	Educator														
	Facilities Maintenance	5	1	\$ 20.55	\$ 15.00	\$ 15.00	\$ 32.77							\$ 20.55	\$ 15.00
	Information Technology														
	Page	2	0	\$ 15.00	\$ 15.00	\$ 15.00	\$ 15.00							\$ 15.00	\$ 15.00
	Teen Services														
	Youth Services (Children and Teen)	2	0	\$ 20.93	\$ 20.93	\$ 18.50	\$ 23.36	3	0	\$ 23.10	\$ 21.00	\$ 20.00	\$ 28.30	\$ 22.23	\$ 21.00
	Totals	46	3					17	0						

Salary Ranges - Full Time vs. Part Time FY2025

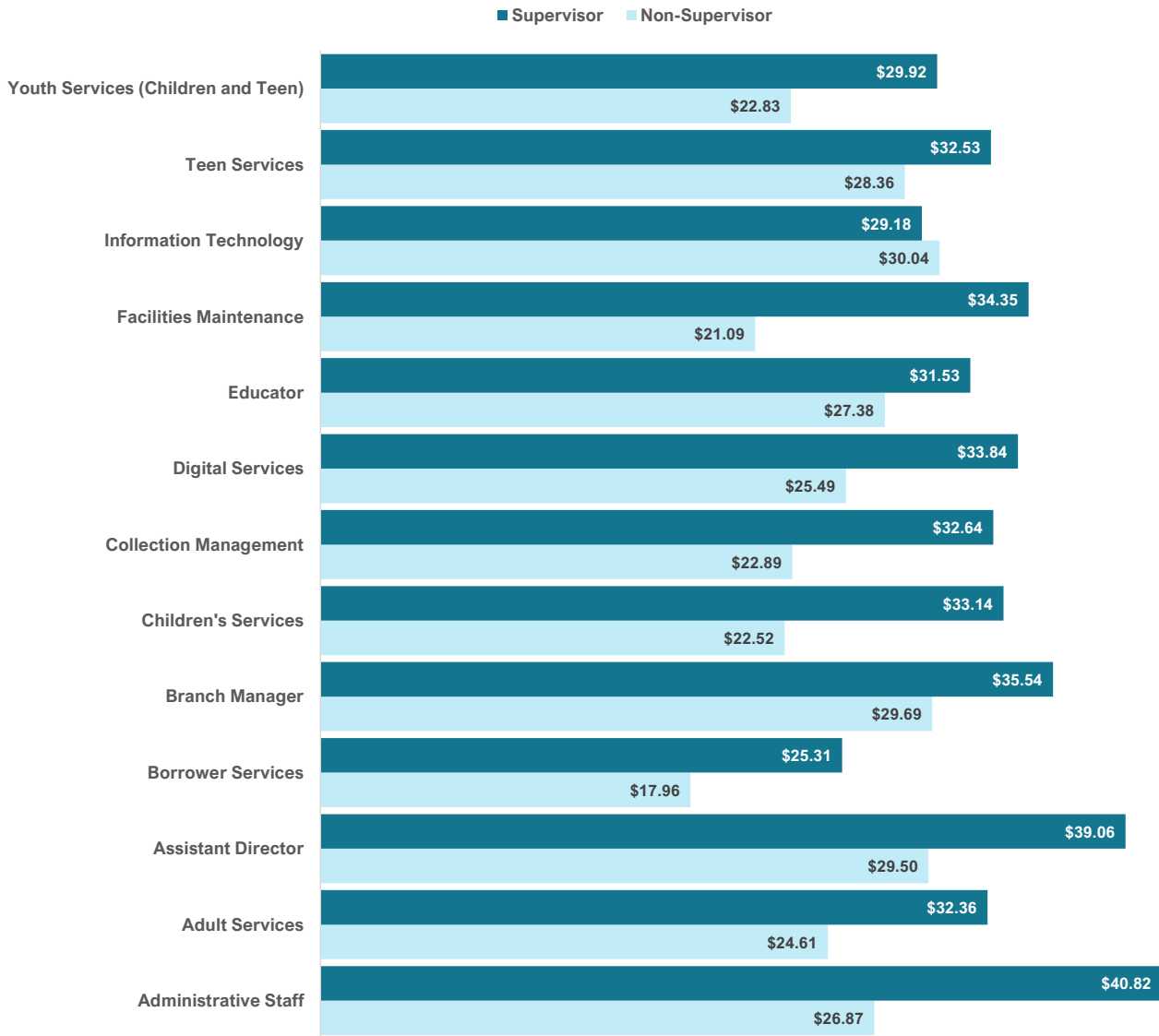
Job Category		Part Time					Full Time						
		No. of staff employed per category	Vacancies	Average	Median	Low	High	No. of staff employed per category	Vacancies	Average	Median	Low	High
Administrative Staff	Supervisor							15	2	\$ 40.82	\$ 39.53	\$ 19.17	\$ 64.28
	Non	18	0	\$ 22.28	\$ 21.67	\$ 15.00	\$ 31.67	29	2	\$ 29.71	\$ 29.06	\$ 18.00	\$ 40.94
Adult Services	Supervisor	6	0	\$ 24.60	\$ 21.58	\$ 16.72	\$ 35.21	40	1	\$ 33.55	\$ 33.24	\$ 20.00	\$ 50.15
	Non	57	6	\$ 21.24	\$ 21.00	\$ 15.00	\$ 30.20	31	1	\$ 30.02	\$ 28.74	\$ 19.94	\$ 40.36
Assistant Director	Supervisor	2	0	\$ 21.92	\$ 21.92	\$ 20.21	\$ 23.63	17	0	\$ 41.08	\$ 39.88	\$ 24.00	\$ 63.15
	Non							1	0	\$ 29.50	\$ 29.50	\$ 29.50	\$ 29.50
Borrower Services	Supervisor	10	0	\$ 18.58	\$ 17.98	\$ 15.00	\$ 23.50	27	2	\$ 27.90	\$ 26.99	\$ 19.11	\$ 47.23
	Non	235	3	\$ 16.87	\$ 16.00	\$ 15.00	\$ 29.09	66	3	\$ 22.21	\$ 21.78	\$ 16.00	\$ 30.20
Branch Manager	Supervisor	1	0	\$ 23.46	\$ 23.46	\$ 23.46	\$ 23.46	10	1	\$ 36.75	\$ 37.19	\$ 29.39	\$ 47.49
	Non							7	1	\$ 29.69	\$ 29.41	\$ 24.78	\$ 33.69
Children's Services	Supervisor	4	1	\$ 27.01	\$ 28.41	\$ 16.00	\$ 35.21	11	0	\$ 35.37	\$ 35.21	\$ 25.00	\$ 50.97
	Non	49	4	\$ 19.44	\$ 18.60	\$ 15.00	\$ 28.77	16	0	\$ 31.75	\$ 29.58	\$ 18.75	\$ 41.71
Collection Management	Supervisor	3	0	\$ 18.00	\$ 18.00	\$ 17.60	\$ 18.40	14	2	\$ 35.78	\$ 36.21	\$ 23.18	\$ 47.29
	Non	18	1	\$ 18.76	\$ 17.50	\$ 15.00	\$ 27.03	19	0	\$ 26.59	\$ 25.82	\$ 20.00	\$ 38.12
Digital Services	Supervisor							1	0	\$ 33.84	\$ 33.84	\$ 33.84	\$ 33.84
	Non	5	0	\$ 21.06	\$ 20.25	\$ 18.75	\$ 25.00	2	0	\$ 34.35	\$ 34.35	\$ 31.52	\$ 37.19
Director	Supervisor	8	0	\$ 28.12	\$ 29.00	\$ 24.00	\$ 31.49	40	0	\$ 45.68	\$ 44.92	\$ 25.00	\$ 85.08
	Non												
Educator	Supervisor							6	0	\$ 31.53	\$ 35.49	\$ 18.50	\$ 37.23
	Non	10	1	\$ 27.29	\$ 25.73	\$ 15.00	\$ 50.00	1	0	\$ 28.27	\$ 28.27	\$ 28.27	\$ 28.27
Facilities Maintenance	Supervisor							10	0	\$ 34.35	\$ 30.97	\$ 22.26	\$ 49.95
	Non	44	4	\$ 19.36	\$ 18.37	\$ 15.00	\$ 32.77	18	1	\$ 24.85	\$ 24.93	\$ 19.00	\$ 39.01
Information Technology	Supervisor	2	0	\$ 24.19	\$ 24.19	\$ 18.54	\$ 29.84	5	0	\$ 31.17	\$ 32.34	\$ 24.73	\$ 37.38
	Non	4	0	\$ 27.92	\$ 17.50	\$ 15.00	\$ 51.25	11	1	\$ 30.62	\$ 32.00	\$ 21.50	\$ 39.56
Page	Supervisor												
	Non	54	9	\$ 14.93	\$ 15.00	\$ 13.00	\$ 16.07	1	0	\$ 19.94	\$ 19.94	\$ 19.94	\$ 19.94
Teen Services	Supervisor							7	0	\$ 32.53	\$ 33.38	\$ 20.00	\$ 46.70
	Non	4	0	\$ 23.42	\$ 23.39	\$ 19.44	\$ 27.46	13	0	\$ 29.88	\$ 30.00	\$ 19.80	\$ 38.12
Youth Services (Children and Teen)	Supervisor	5	0	\$ 20.35	\$ 20.06	\$ 17.70	\$ 23.00	25	0	\$ 32.00	\$ 32.00	\$ 24.81	\$ 41.21
	Non	22	0	\$ 20.18	\$ 21.00	\$ 15.00	\$ 30.13	21	1	\$ 25.66	\$ 27.04	\$ 17.29	\$ 34.57

Notes

Job Category - Definitions for each category are available on the Job Category Definitions tab.

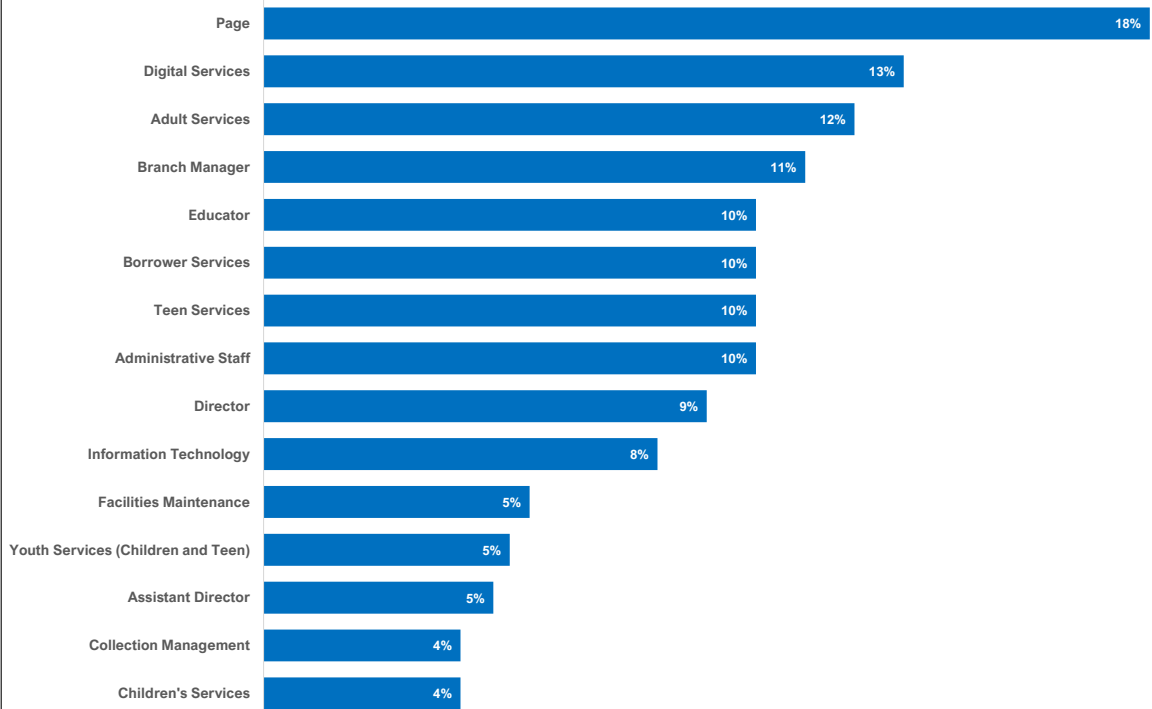
Hourly Rates - To enhance comparability, OLIS has calculated hourly wage rates, based on a 52-week work year, for positions where only annual salary information was provided.

Comparison of Average Wage in FY25 of each Job Category by Supervisor Status



This chart does not depict Director or Page job categories. All Director positions are Supervisor roles, and all Page positions are Non-Supervisor roles.

Percent change of average hourly wage for job categories between FY22 and FY25.



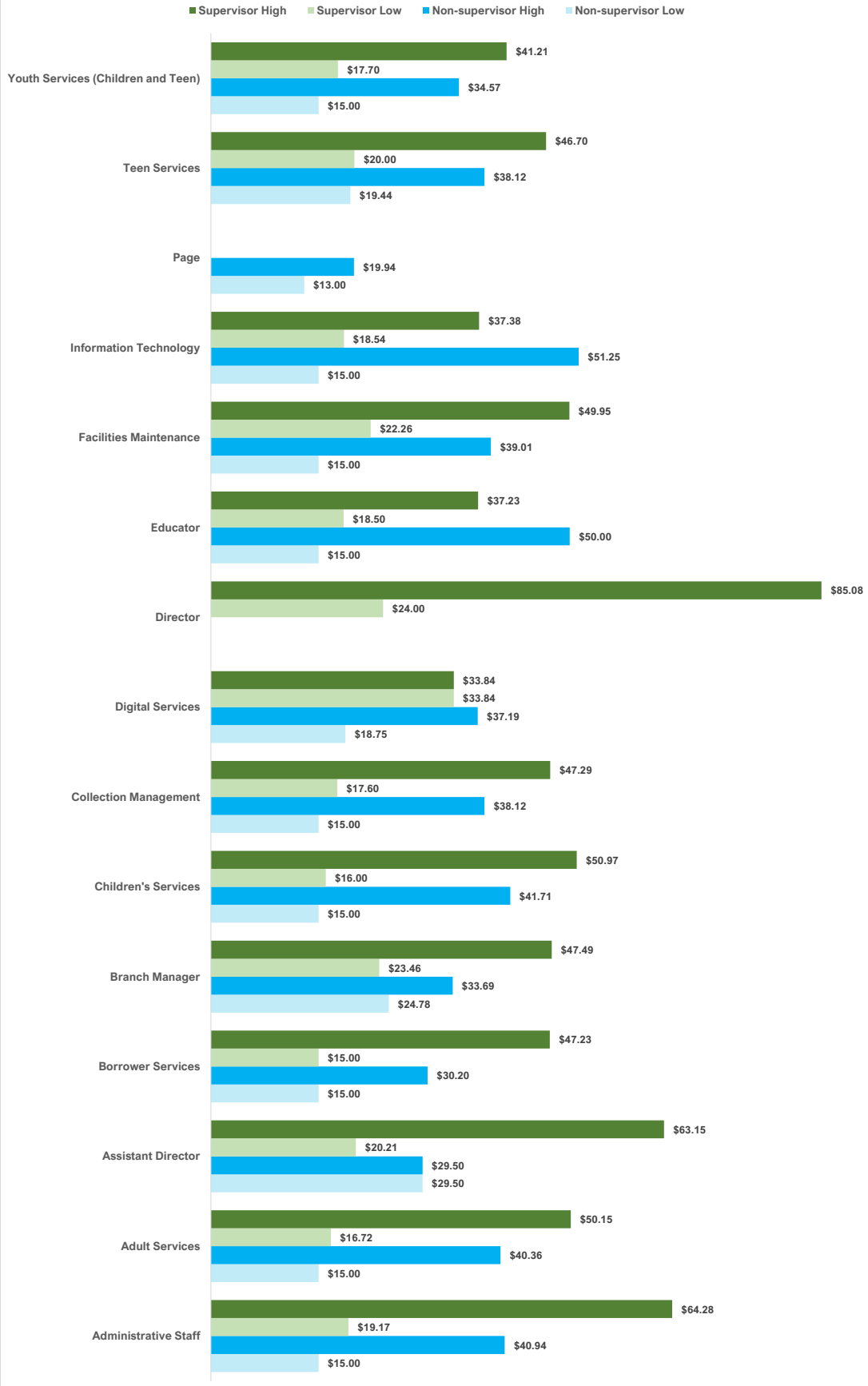
To create this chart, OLIS calculated the percent change of the average hourly wage from FY2022 to FY2025, for each job category. Factors that may impact percent changes include:

- change in how a position was categorized when reported on the Annual Survey;
- employee filling position left and position was filled by someone earning a lower wage.

It is also important to note that the average calculation is impacted by the number of positions within a given category. For example, in FY25 the average wage for Borrower Services is calculating the average from 338 positions, whereas the average wage for Digital Services is based on only 8 positions.

The significant increase in the average wage for Page category reflects the mandatory increases in Rhode Island's minimum wage. In FY2025, minimum wage is set at \$15.00 per hour.

Wage Ranges by Job Category for FY25 by Supervisor Status



Job Category Definitions FY2025

Job Category Definitions

Adult Services: Staff who are primarily assigned to work with adults. May research information for patrons; provide instruction and assistance with the use of technology; provide readers' advisory services; and contribute to maintaining the collection. Plans and/or coordinates library programs, partnerships, or outreach services for adults and seniors.

Assistant Director: The Assistant Director reports to the Library Director and is a member of the library leadership team. Main areas of focus include library operations management, leading and mentoring staff, developing and implementing strategic initiatives, budget planning, and project management. Assumes responsibility in the absence of the Director.

Administrative Staff: Staff who support the administrative operations of the library. Responsibilities may include clerical, accounts payable/receivable, payroll, human resources, development, communications, or notary. Staff may act as civic liaison to municipal departments. Roles may or may not be public facing.

Borrower Services: Performs all public service duties as they relate to circulation and customer service. Often serves as the first point of contact for patrons, orienting them to the library and its services, including explaining policies and procedures. Duties typically include checking materials in and out, managing holds, collecting fines, shelving and straightening the collection, registering patrons for library cards, assisting with copy, fax, and printing. May require a high school diploma; some positions may be supervisory.

Branch Manager: Provides oversight for daily operations of the facility. Supervises branch library staff as needed. May plan and conduct programs for adults, youth, and families. Provides assistance directly to library users on the use of library services and technology.

Children's Services: Staff who are primarily assigned to work with children ages 0-12 and their caregivers. May partner with schools and other youth-serving organizations or professionals. May plan, conduct, or assist in delivery of library services for youth. Advises users on library resources. May select and maintain materials for the youth collection. May plan and conduct programs and outreach services.

Collection Management: Staff who are primarily responsible for maintaining the collection, which may include selecting, ordering, receiving, cataloging, processing, organizing, or deaccessioning of materials. May have responsibility for overseeing the materials budget. Supervisory positions usually held by professional librarians.

Digital Services: Staff who are primarily assigned to instruct patrons in the use of various technologies and digital content, including makerspace equipment. Provides instruction and professional support to library staff. May build and maintain the library's online presence (which could include social media) and digital platforms. Identifies and implements new and emerging technologies.

Director: Chief administrative officer of the library or library system. Reports directly to a board of trustees. Plans and directs all aspects of the operation. May have job titles such as Librarian or Head Librarian. May represent the library to the community.

Educator: Staff who are primarily assigned to teach classes, courses, and skills that fall outside traditional librarian instructional roles. Areas of focus may include literacy, GED, citizenship, early childhood, language instruction, or workforce skills. May or may not require certification or specialized/advanced

Facilities Maintenance: Staff who are primarily responsible for the performance of custodial and maintenance duties necessary to clean and maintain the library building and grounds. May oversee physical plant systems, maintain inventory of maintenance supplies, and make minor repairs as needed. May be responsible for building security.

Information Technology: Staff who are primarily assigned to select, purchase, install, inventory, and maintain the library's IT equipment. May include hardware and peripherals, software, phone system, wired and wireless network infrastructure. Coordinates with Ocean State Libraries network and IT staff to upgrade and maintain consortium level network. May train and assist staff on library technology. May build and maintain the library's website.

Page: Retrieves and returns materials to shelves and/or files. Reads and straightens shelves.

Teen Services: Staff who are primarily assigned to work with teens ages 13-18 and their caregivers. May partner with schools and other youth-serving organizations or professionals. May plan, conduct, or assist in delivery of library services for youth. Advises users on library resources. May select and maintain materials for the youth collection. May plan and conduct programs and outreach services.

Youth Services: Staff who are primarily assigned to work with youth ages 0-18 and their caregivers. May partner with schools and other youth-serving organizations or professionals. May plan, conduct, or assist in delivery of library services for youth. Advises users on library resources. May select and maintain materials for the youth collection. May plan and conduct programs and outreach services.