

Staffing and Salaries FY2024

2024 Rhode Island Public Library Statistical Report: Staffing and Salaries

Release date: December 2024

These data tables are part of a statistical report based on data collected in the 2024 Rhode Island Public Library Annual Survey. The full report is located on the Office of Library and Information Services (OLIS) website at <https://olis.ri.gov/programs-and-support/library-statistics/public-library-annual-survey>.

Data collected through the Annual Survey covers FY2024 (July 1, 2023 - June 30, 2024). The deadline for the report submission was September 15, 2024.

The Office of Library and Information Services (OLIS) participates in the national Public Libraries Survey (PLS), which is administered annually by the Institute of Museum and Library Services (IMLS). Data submitted to the PLS goes through a vetting process to ensure accuracy. Preliminary data is returned to the states annually, but is not considered finalized until published by IMLS. The data made available by OLIS through this statistical report is preliminary data, with a few corrected data points from individual libraries.

To enhance comparability, OLIS has calculated hourly wage rates, based on a 52-week year, for positions where only annual salary information was provided. OLIS also calculated the annual salary for any director positions that were reported with an hourly wage, to add further comparability for those positions. The data reflects salary information as of June 30, 2024.

For municipalities in which more than one independent library system operates, library service areas were determined by OLIS using a spatial analysis of patron location. The municipal population was apportioned based on the geographic location and density of each library's patrons within the municipality. Only the population within the designated library service area is reflected in the population figure for each of the 17 libraries that share municipalities.

These data tables include summary statistics and performance measures calculated by OLIS. If you have questions about using the data, suggestions for improvements, or have developed analyses that would be helpful to the community, please contact Kelly Metzger, kelly.metzger@olis.ri.gov.

Click on one of the links below or one of the tabs to view individual sheets.

[Positions](#)

[Library Summary](#)

[Library Summary by population](#)

[Staff Measures](#)

[Staff Measures by population](#)

[Rank by System Square Footage](#)

[Salary Ranges - statewide](#)

[Salary Ranges by population](#)

[Salary Ranges by Full Time and Part Time Status](#)

[Job Category definitions](#)

[All Data](#)

[Other Data](#)

Charts:

[Average wage by supervisor status](#)

[Percent change in average wage by job category](#)

[Wage ranges by category and supervisor status](#)



Staff Positions by Library FY2024

Location	Municipality	Population	Position Title	No. of Staff	Job Category	Hourly Rate	Hourly Rate Calculated by OLIS	Annual Salary	Annual Salary Calculated by OLIS	Hours per Week	Degree Required	Supervisor?	Vacant?
Barrington Public Library	Barrington	17,153	Administrative Assistant	1	Administrative Staff	\$ 31.88	Yes	\$ 58,030		35	Bachelor's	No	No
Barrington Public Library	Barrington	17,153	Head of Information Services	1	Adult Services	\$ 37.52	Yes	\$ 68,290		35	MLS	Yes	No
Barrington Public Library	Barrington	17,153	Community Engagement Librarian	1	Adult Services	\$ 33.87	Yes	\$ 61,648		35	MLS	No	No
Barrington Public Library	Barrington	17,153	Digital Services Librarian	1	Adult Services	\$ 30.81	Yes	\$ 55,702		35	MLS	No	No
Barrington Public Library	Barrington	17,153	Reference Assistant	1	Adult Services	\$ 19.53	No			14	Bachelor's	No	No
Barrington Public Library	Barrington	17,153	Reference Assistant	1	Adult Services	\$ 20.00	No			4	Bachelor's	No	No
Barrington Public Library	Barrington	17,153	Reference Assistant	2	Adult Services	\$ 19.15	No			2	Bachelor's	No	No
Barrington Public Library	Barrington	17,153	Reference Assistant	1	Adult Services	\$ 20.80	No			2	Bachelor's	No	No
Barrington Public Library	Barrington	17,153	Reference Assistant	1	Adult Services	\$ 19.53	No			4	Bachelor's	No	No
Barrington Public Library	Barrington	17,153	Reference Assistant	1	Adult Services	\$ 21.42	No			5	Bachelor's	No	No
Barrington Public Library	Barrington	17,153	Reference Assistant	1	Adult Services	\$ 20.00	No			4	Bachelor's	No	No
Barrington Public Library	Barrington	17,153	Home Delivery	1	Adult Services	\$ 19.53	No			3	Bachelor's	No	No
Barrington Public Library	Barrington	17,153	Head of Circulation	1	Borrower Services	\$ 32.25	Yes	\$ 58,691		35	MLS	Yes	No
Barrington Public Library	Barrington	17,153	Library Assistant II	1	Borrower Services	\$ 20.66	Yes	\$ 37,595		35	HS Diploma	No	No
Barrington Public Library	Barrington	17,153	Library Assistant II	1	Borrower Services	\$ 22.74	Yes	\$ 41,394		35	HS Diploma	No	No
Barrington Public Library	Barrington	17,153	Head of Children's Services	1	Children's Services	\$ 37.52	Yes	\$ 68,290		35	MLS	Yes	No
Barrington Public Library	Barrington	17,153	Family Engagement Librarian	1	Children's Services	\$ 25.90	Yes	\$ 47,133		35	MLS	No	No
Barrington Public Library	Barrington	17,153	Children's Assistant 1	1	Children's Services	\$ 23.00	No			22	Bachelor's	No	No
Barrington Public Library	Barrington	17,153	Children's Assistant 1	1	Children's Services	\$ 18.00	No			6	Bachelor's	No	No
Barrington Public Library	Barrington	17,153	Children's Assistant 1	1	Children's Services	\$ 19.53	No			3	Bachelor's	No	No
Barrington Public Library	Barrington	17,153	Children's Assistant 1	1	Children's Services	\$ 19.53	No			7	Bachelor's	No	No
Barrington Public Library	Barrington	17,153	Children's Assistant II	1	Children's Services	\$ 19.58	No			2	Bachelor's	No	No
Barrington Public Library	Barrington	17,153	Children's Assistant II	1	Children's Services	\$ 18.00	No			2	Bachelor's	No	No
Barrington Public Library	Barrington	17,153	Children's Assistant II	1	Children's Services	\$ 20.80	No			4	Bachelor's	No	No
Barrington Public Library	Barrington	17,153	Head of Collection Management/Ast. Director	1	Collection Management	\$ 44.56	Yes	\$ 81,104		35	MLS	Yes	No
Barrington Public Library	Barrington	17,153	Collection Management Assistant	1	Collection Management	\$ 23.41	Yes	\$ 42,612		35	Bachelor's	No	No
Barrington Public Library	Barrington	17,153	Collection Management Assistant	1	Collection Management	\$ 16.07	No			4	HS Diploma	No	No
Barrington Public Library	Barrington	17,153	Director	1	Director	\$ 54.15	Yes	\$ 98,558	No	35	MLS	Yes	No
Barrington Public Library	Barrington	17,153	Head Custodian	1	Facilities Maintenance	\$ 26.45	Yes	\$ 48,132		35	HS Diploma	Yes	No
Barrington Public Library	Barrington	17,153	Custodian	1	Facilities Maintenance	\$ 18.00	No			10	HS Diploma	No	No
Barrington Public Library	Barrington	17,153	Custodian	1	Facilities Maintenance	\$ 17.68	No			2	HS Diploma	No	No
Barrington Public Library	Barrington	17,153	Custodian	1	Facilities Maintenance	\$ 18.64	No			9	HS Diploma	No	No
Barrington Public Library	Barrington	17,153	Custodian	1	Facilities Maintenance	\$ 18.64	No			15	HS Diploma	No	No
Barrington Public Library	Barrington	17,153	Custodian	1	Facilities Maintenance	\$ 18.68	No			5	HS Diploma	No	No
Barrington Public Library	Barrington	17,153	Custodian	1	Facilities Maintenance	\$ 17.00	No			5	HS Diploma	No	No
Barrington Public Library	Barrington	17,153	Information Technology Coordinator	1	Information Technology	\$ 34.72	Yes	\$ 63,187		35	MLS	No	No
Barrington Public Library	Barrington	17,153	Page	3	Page	\$ 15.00	No			3	None	No	No
Barrington Public Library	Barrington	17,153	Page	4	Page	\$ 15.60	No			3	None	No	No
Barrington Public Library	Barrington	17,153	Young Adult Librarian	1	Teen Services	\$ 34.14	Yes	\$ 62,126		35	MLS	No	No
Rogers Free Library	Bristol	22,493	Bookkeeper	1	Administrative Staff	\$ 22.66	No			15	Bachelor's	No	No
Rogers Free Library	Bristol	22,493	Reference Librarian	1	Adult Services	\$ 25.64	Yes	\$ 50,000		37.5	MLS	Yes	No
Rogers Free Library	Bristol	22,493	Adult Programming and Outreach Coordinator	1	Adult Services	\$ 25.64	Yes	\$ 50,000		37.5	Master's	Yes	No
Rogers Free Library	Bristol	22,493	Reference Associate	1	Adult Services	\$ 15.91	No			15	Bachelor's	No	No
Rogers Free Library	Bristol	22,493	Reference Associate	1	Adult Services	\$ 20.11	No			25	Bachelor's	No	No
Rogers Free Library	Bristol	22,493	Reference/Circ Associate	1	Adult Services	\$ 16.23	No			20	Bachelor's	No	No
Rogers Free Library	Bristol	22,493	Reference Associate	1	Adult Services	\$ 15.91	No			12	Bachelor's	No	Yes
Rogers Free Library	Bristol	22,493	Reference Associate	1	Adult Services	\$ 17.31	No			24	Bachelor's	No	No
Rogers Free Library	Bristol	22,493	Circulations and Collections Librarian	1	Borrower Services	\$ 25.64	Yes	\$ 50,000		37.5	MLS	Yes	No
Rogers Free Library	Bristol	22,493	Circ Associate	1	Borrower Services	\$ 16.23	No			14	Bachelor's	No	Yes
Rogers Free Library	Bristol	22,493	Circ Associate	1	Borrower Services	\$ 16.23	No			12	Bachelor's	No	No
Rogers Free Library	Bristol	22,493	Circ Associate	1	Borrower Services	\$ 18.29	No			28	Bachelor's	No	No
Rogers Free Library	Bristol	22,493	Circ Associate	1	Borrower Services	\$ 16.23	No			27	Bachelor's	No	No
Rogers Free Library	Bristol	22,493	Circ Associate	1	Borrower Services	\$ 15.91	No			11	Bachelor's	No	No
Rogers Free Library	Bristol	22,493	Circ Associate	1	Borrower Services	\$ 15.91	No			14	Bachelor's	No	No
Rogers Free Library	Bristol	22,493	Juvenile Associate	1	Children's Services	\$ 17.31	No			4	Bachelor's	No	No
Rogers Free Library	Bristol	22,493	Juvenile Associate	1	Children's Services	\$ 15.91	No			6	Bachelor's	No	No
Rogers Free Library	Bristol	22,493	Storytime Librarian	1	Children's Services	\$ 21.86	No			20	MLS	No	No
Rogers Free Library	Bristol	22,493	Juvenile Associate	1	Children's Services	\$ 16.23	No			19	Bachelor's	No	No
Rogers Free Library	Bristol	22,493	Juvenile Associate	1	Children's Services	\$ 16.23	No			15	Bachelor's	No	No
Rogers Free Library	Bristol	22,493	Juvenile Associate	1	Children's Services	\$ 15.91	No			10	Bachelor's	No	No
Rogers Free Library	Bristol	22,493	Juvenile Associate	1	Children's Services	\$ 16.23	No			20	Bachelor's	No	No
Rogers Free Library	Bristol	22,493	Juvenile Associate	1	Children's Services	\$ 17.41	No			12	Bachelor's	No	No
Rogers Free Library	Bristol	22,493	Juvenile Associate	1	Children's Services	\$ 16.23	No			20	Bachelor's	No	No
Rogers Free Library	Bristol	22,493	Juvenile Associate/Circ Associate	1	Children's Services	\$ 16.23	No			20	Bachelor's	No	No
Rogers Free Library	Bristol	22,493	Library Director	1	Director	\$ 45.75	Yes	\$ 89,220	No	37.5	MLS	Yes	No
Rogers Free Library	Bristol	22,493	Facilities Specialist	1	Facilities Maintenance	\$ 22.00	No			18	HS Diploma	No	No
Rogers Free Library	Bristol	22,493	IT Coordinator	1	Information Technology	\$ 25.64	Yes	\$ 50,000		37.5	Bachelor's	Yes	No
Rogers Free Library	Bristol	22,493	Page	1	Page	\$ 13.39	No			6	Other	No	No
Rogers Free Library	Bristol	22,493	Youth Services Coordinator	1	Youth Services (Children & Teen)	\$ 25.64	Yes	\$ 50,000		37.5	MLS	Yes	No
Rogers Free Library	Bristol	22,493	Juvenile Associate	1	Youth Services (Children & Teen)	\$ 16.23	No			20	Bachelor's	No	No
Jesse M. Smith Memorial Library	Burrillville	12,330	Head Reference Librarian	1	Adult Services	\$ 31.32	No			35	MLS	Yes	No
Jesse M. Smith Memorial Library	Burrillville	12,330	Reference Librarian Assistant	1	Adult Services	\$ 18.00	No			18	HS Diploma	No	No
Jesse M. Smith Memorial Library	Burrillville	12,330	Assistant Director	1	Assistant Director	\$ 36.30	No			35	MLS	Yes	No

Staff Positions by Library FY2024

Location	Municipality	Population	Position Title	No. of Staff	Job Category	Hourly Rate	Hourly Rate Calculated by OLIS	Annual Salary	Annual Salary Calculated by OLIS	Hours per Week	Degree Required	Supervisor?	Vacant?
Jesse M. Smith Memorial Library	Burrilville	12,330	Library Assistant II	1	Borrower Services	\$ 15.13	No			18	HS Diploma	No	No
Jesse M. Smith Memorial Library	Burrilville	12,330	Library Assistant III	1	Borrower Services	\$ 18.74	No			19.5	HS Diploma	No	No
Jesse M. Smith Memorial Library	Burrilville	12,330	Head of Circulation	1	Borrower Services	\$ 27.94	No			35	Bachelor's	Yes	No
Jesse M. Smith Memorial Library	Burrilville	12,330	Library Assistant II	1	Borrower Services	\$ 16.00	No			19	HS Diploma	No	No
Jesse M. Smith Memorial Library	Burrilville	12,330	Library Assistant III	1	Borrower Services	\$ 23.60	No			35	HS Diploma	No	No
Jesse M. Smith Memorial Library	Burrilville	12,330	Library Assistant II	1	Borrower Services	\$ 16.00	No			18	HS Diploma	No	Yes
Jesse M. Smith Memorial Library	Burrilville	12,330	Children's Librarian	1	Children's Services	\$ 25.83	No			35	MLS	No	No
Jesse M. Smith Memorial Library	Burrilville	12,330	Children's Library Assistant	1	Children's Services	\$ 19.08	No			18	HS Diploma	No	No
Jesse M. Smith Memorial Library	Burrilville	12,330	Children's Library Assistant	1	Children's Services	\$ 19.08	No			19.5	HS Diploma	No	No
Jesse M. Smith Memorial Library	Burrilville	12,330	Head Children's Librarian	1	Children's Services	\$ 31.40	No			35	MLS	Yes	No
Jesse M. Smith Memorial Library	Burrilville	12,330	Director	1	Director	\$ 45.60	No	\$ 82,992	Yes	35	MLS	Yes	No
Jesse M. Smith Memorial Library	Burrilville	12,330	Building and Grounds Librarian	1	Facilities Maintenance	\$ 25.00	No			40	HS Diploma	No	No
Jesse M. Smith Memorial Library	Burrilville	12,330	Page	1	Page	\$ 14.00	No			14	None	No	No
Jesse M. Smith Memorial Library	Burrilville	12,330	Teen Librarian	1	Teen Services	\$ 29.67	No			35	MLS	Yes	No
Pascoag Free Public Library	Burrilville	3,828	Library Technician	1	Borrower Services	\$ 20.50	No	\$ 17,056		16	Bachelor's	No	No
Pascoag Free Public Library	Burrilville	3,828	Library Associate	1	Borrower Services	\$ 15.00	No	\$ 15,600		20	HS Diploma	No	No
Pascoag Free Public Library	Burrilville	3,828	Library Associate	1	Borrower Services	\$ 15.00	No	\$ 8,580		13	HS Diploma	No	No
Pascoag Free Public Library	Burrilville	3,828	Library Director	1	Director	\$ 25.50	No	\$ 28,590	No	22	MLS	Yes	No
Pascoag Free Public Library	Burrilville	3,828	Outside Custodian	1	Facilities Maintenance	\$ 15.00	No	\$ 2,340		3	HS Diploma	No	No
Pascoag Free Public Library	Burrilville	3,828	Inside Custodian	1	Facilities Maintenance	\$ 15.00	No	\$ 3,120		4	HS Diploma	No	No
Pascoag Free Public Library	Burrilville	3,828	Youth Services Librarian	1	Youth Services (Children & Teen)	\$ 20.00	No	\$ 15,600		15	MLS	Yes	No
Adams Public Library	Central Falls	22,583	Library Assistant	1	Borrower Services	\$ 14.00	No			14	HS Diploma	No	No
Adams Public Library	Central Falls	22,583	Library Assistant	1	Borrower Services	\$ 14.00	No			13	HS Diploma	No	No
Adams Public Library	Central Falls	22,583	Library Assistant	1	Borrower Services	\$ 14.00	No			21	HS Diploma	No	No
Adams Public Library	Central Falls	22,583	Library Assistant	1	Borrower Services	\$ 14.00	No			19	HS Diploma	No	No
Adams Public Library	Central Falls	22,583	Library Assistant	1	Borrower Services	\$ 14.00	No			18	HS Diploma	No	No
Adams Public Library	Central Falls	22,583	Library Assistant	1	Borrower Services	\$ 14.00	No			19	HS Diploma	No	No
Adams Public Library	Central Falls	22,583	Cataloger	1	Collection Management	\$ 14.00	No			4	Bachelor's	No	No
Adams Public Library	Central Falls	22,583	Director	1	Director	\$ 30.00	No	\$ 62,400	Yes	40	MLS	Yes	Yes
Adams Public Library	Central Falls	22,583	Custodian	1	Facilities Maintenance	\$ 14.00	No			20	None	No	No
Adams Public Library	Central Falls	22,583	Youth Services Librarian	1	Youth Services (Children & Teen)	\$ 21.60	No			20	MLS	No	Yes
Cross' Mills Public Library	Charlestown	7,997	Bookkeeper	1	Administrative Staff	\$ 22.88	No			2	Bachelor's	No	No
Cross' Mills Public Library	Charlestown	7,997	Community Services Librarian	1	Adult Services	\$ 26.93	Yes	\$ 49,008		35	MLS	Yes	No
Cross' Mills Public Library	Charlestown	7,997	Circulation Supervisor	1	Borrower Services	\$ 20.81	Yes	\$ 37,880		35	HS Diploma	Yes	No
Cross' Mills Public Library	Charlestown	7,997	Technology Programmer / Circulation Assistant	1	Borrower Services	\$ 18.00	No			25	HS Diploma	No	No
Cross' Mills Public Library	Charlestown	7,997	Circulation Assistant	1	Borrower Services	\$ 17.10	No			6	HS Diploma	No	No
Cross' Mills Public Library	Charlestown	7,997	Circulation Assistant	1	Borrower Services	\$ 15.75	No			20	HS Diploma	No	No
Cross' Mills Public Library	Charlestown	7,997	Circulation Assistant	1	Borrower Services	\$ 14.00	No			17	None	No	No
Cross' Mills Public Library	Charlestown	7,997	Executive Director	1	Director	\$ 38.36	Yes	\$ 79,780	No	40	MLS	Yes	No
Cross' Mills Public Library	Charlestown	7,997	Caretaker	1	Facilities Maintenance	\$ 19.70	No			15	None	No	No
Cross' Mills Public Library	Charlestown	7,997	Custodian	1	Facilities Maintenance	\$ 25.26	No			5	None	No	No
Cross' Mills Public Library	Charlestown	7,997	Music Program Director	1	Youth Services (Children & Teen)	\$ 22.12	No			6	None	No	No
Coventry Public Library	Coventry	35,688	Finance Clerk/Tech Services	1	Administrative Staff	\$ 21.84	No			12	Bachelor's	No	No
Coventry Public Library	Coventry	35,688	Head of Adult Services	1	Adult Services	\$ 31.46	Yes	\$ 57,250		35	MLS	Yes	No
Coventry Public Library	Coventry	35,688	PT Librarian	1	Adult Services	\$ 23.46	No			14.5	MLS	No	No
Coventry Public Library	Coventry	35,688	PT Reference Assistant	1	Adult Services	\$ 19.64	No			7	Bachelor's	No	No
Coventry Public Library	Coventry	35,688	PT Reference Assistant	1	Adult Services	\$ 20.80	No			19.5	Bachelor's	No	No
Coventry Public Library	Coventry	35,688	PT Reference Assistant	1	Adult Services	\$ 20.00	No			13	Bachelor's	No	No
Coventry Public Library	Coventry	35,688	Assistant Director	1	Assistant Director	\$ 34.07	Yes	\$ 62,000		35	MLS	Yes	Yes
Coventry Public Library	Coventry	35,688	Circulation Manager	1	Borrower Services	\$ 26.83	Yes	\$ 48,826		35	MLS	Yes	No
Coventry Public Library	Coventry	35,688	PT Library Assistant	1	Borrower Services	\$ 15.00	No			15	Bachelor's	No	No
Coventry Public Library	Coventry	35,688	PT Circulation Assistant	2	Borrower Services	\$ 15.00	No			4	None	No	No
Coventry Public Library	Coventry	35,688	PT Circulation Assistant	1	Borrower Services	\$ 15.00	No			19	None	No	No
Coventry Public Library	Coventry	35,688	PT Circulation Assistant	1	Borrower Services	\$ 17.05	No			21	None	No	No
Coventry Public Library	Coventry	35,688	PT Circulation Assistant	1	Borrower Services	\$ 15.30	No			7	None	No	No
Coventry Public Library	Coventry	35,688	PT Circulation Assistant	1	Borrower Services	\$ 15.00	No			12	None	No	No
Coventry Public Library	Coventry	35,688	PT Circulation Assistant	1	Borrower Services	\$ 15.30	No			23	None	No	No
Coventry Public Library	Coventry	35,688	PT Circulation Assistant	1	Borrower Services	\$ 15.00	No			8	None	No	No
Coventry Public Library	Coventry	35,688	PT Circulation Assistant	1	Borrower Services	\$ 15.30	No			8	None	No	No
Coventry Public Library	Coventry	35,688	PT Circulation Assistant	1	Borrower Services	\$ 15.30	No			4	None	No	No
Coventry Public Library	Coventry	35,688	Branch Manager	1	Branch Manager	\$ 23.46	No			19	MLS	Yes	No
Coventry Public Library	Coventry	35,688	Outreach Librarian	1	Children's Services	\$ 20.40	No			21	Bachelor's	No	No
Coventry Public Library	Coventry	35,688	Children's Librarian	1	Children's Services	\$ 23.00	No			10	MLS	No	No
Coventry Public Library	Coventry	35,688	PT Children's Assistant	1	Children's Services	\$ 19.43	No			8	Bachelor's	No	No
Coventry Public Library	Coventry	35,688	PT Children's Assistant	1	Children's Services	\$ 20.00	No			18	Bachelor's	No	No
Coventry Public Library	Coventry	35,688	Head of Technical Services	1	Collection Management	\$ 35.36	Yes	\$ 64,360		35	MLS	Yes	No
Coventry Public Library	Coventry	35,688	Director	1	Director	\$ 43.74	Yes	\$ 79,600	No	35	MLS	Yes	No
Coventry Public Library	Coventry	35,688	Custodian/Maintenance	2	Facilities Maintenance	\$ 22.63	No			20	None	No	No
Coventry Public Library	Coventry	35,688	IT Director	1	Information Technology	\$ 49.45	No			15	Other	No	No
Coventry Public Library	Coventry	35,688	Page	1	Page	\$ 14.28	No			20	None	No	No
Coventry Public Library	Coventry	35,688	Head of Youth Services	1	Youth Services (Children & Teen)	\$ 31.59	Yes	\$ 57,500		35	MLS	Yes	No
Coventry Public Library	Coventry	35,688	Librarian II	1	Youth Services (Children & Teen)	\$ 28.68	Yes	\$ 52,200		35	MLS	No	No

Staff Positions by Library FY2024

Location	Municipality	Population	Position Title	No. of Staff	Job Category	Hourly Rate	Hourly Rate Calculated by OLIS	Annual Salary	Annual Salary Calculated by OLIS	Hours per Week	Degree Required	Supervisor?	Vacant?
Cranston Public Library	Cranston	82,934	Communications Manager	1	Administrative Staff	\$ 34.13	Yes	\$ 62,123		35	Other	No	No
Cranston Public Library	Cranston	82,934	Administrative Assistant	1	Administrative Staff	\$ 22.66	Yes	\$ 41,240		35	HS Diploma	No	No
Cranston Public Library	Cranston	82,934	Business Manager	1	Administrative Staff	\$ 36.14	Yes	\$ 65,780		35	HS Diploma	No	No
Cranston Public Library	Cranston	82,934	Driver	1	Administrative Staff	\$ 14.00	No			20	None	No	No
Cranston Public Library	Cranston	82,934	Librarian III	1	Adult Services	\$ 46.84	Yes	\$ 85,253		35	MLS	Yes	No
Cranston Public Library	Cranston	82,934	Librarian I	1	Adult Services	\$ 37.71	Yes	\$ 68,639		35	MLS	No	No
Cranston Public Library	Cranston	82,934	Library Assistant II	1	Adult Services	\$ 27.30	Yes	\$ 49,686		35	HS Diploma	No	No
Cranston Public Library	Cranston	82,934	Librarian I	1	Adult Services	\$ 37.71	Yes	\$ 68,640		35	MLS	No	No
Cranston Public Library	Cranston	82,934	Librarian I	1	Adult Services	\$ 39.18	Yes	\$ 71,316		35	MLS	No	No
Cranston Public Library	Cranston	82,934	Librarian	1	Adult Services	\$ 21.00	No			3	MLS	No	No
Cranston Public Library	Cranston	82,934	Librarian	1	Adult Services	\$ 21.00	No			4	MLS	No	No
Cranston Public Library	Cranston	82,934	Librarian	1	Adult Services	\$ 21.00	No			12	MLS	No	No
Cranston Public Library	Cranston	82,934	Librarian	1	Adult Services	\$ 21.00	No			12	MLS	No	No
Cranston Public Library	Cranston	82,934	Librarian	1	Adult Services	\$ 21.00	No			5	MLS	No	No
Cranston Public Library	Cranston	82,934	Assistant Director	1	Assistant Director	\$ 56.13	Yes	\$ 102,154		35	MLS	Yes	No
Cranston Public Library	Cranston	82,934	Library Assistant II	1	Borrower Services	\$ 26.77	Yes	\$ 48,723		35	HS Diploma	No	No
Cranston Public Library	Cranston	82,934	Library Assistant II	1	Borrower Services	\$ 27.30	Yes	\$ 49,686		35	HS Diploma	No	No
Cranston Public Library	Cranston	82,934	Library Assistant II	1	Borrower Services	\$ 21.10	Yes	\$ 38,402		35	HS Diploma	No	No
Cranston Public Library	Cranston	82,934	Library Assistant II	1	Borrower Services	\$ 23.43	Yes	\$ 42,640		35	HS Diploma	No	No
Cranston Public Library	Cranston	82,934	Library Assistant II	1	Borrower Services	\$ 26.30	Yes	\$ 47,864		35	HS Diploma	No	No
Cranston Public Library	Cranston	82,934	Library Assistant III	1	Borrower Services	\$ 30.97	Yes	\$ 56,357		35	HS Diploma	Yes	No
Cranston Public Library	Cranston	82,934	Library Aide	1	Borrower Services	\$ 14.00	No			5	HS Diploma	No	No
Cranston Public Library	Cranston	82,934	Library Aide	1	Borrower Services	\$ 14.00	No			11	HS Diploma	No	No
Cranston Public Library	Cranston	82,934	Library Assistant	1	Borrower Services	\$ 15.40	No			17	HS Diploma	No	No
Cranston Public Library	Cranston	82,934	Library Assistant	1	Borrower Services	\$ 15.40	No			12	HS Diploma	No	No
Cranston Public Library	Cranston	82,934	Library Aide	1	Borrower Services	\$ 14.00	No			10	HS Diploma	No	No
Cranston Public Library	Cranston	82,934	Library Aide	1	Borrower Services	\$ 14.00	No			7	HS Diploma	No	No
Cranston Public Library	Cranston	82,934	Library Assistant	1	Borrower Services	\$ 15.40	No			7	HS Diploma	No	No
Cranston Public Library	Cranston	82,934	Library Aide	1	Borrower Services	\$ 14.00	No			10	HS Diploma	No	No
Cranston Public Library	Cranston	82,934	Library Aide	1	Borrower Services	\$ 14.00	No			17	HS Diploma	No	No
Cranston Public Library	Cranston	82,934	Library Aide	1	Borrower Services	\$ 14.00	No			16	HS Diploma	No	No
Cranston Public Library	Cranston	82,934	Library Assistant	1	Borrower Services	\$ 15.40	No			6	HS Diploma	No	No
Cranston Public Library	Cranston	82,934	Library Aide	1	Borrower Services	\$ 14.00	No			14	HS Diploma	No	No
Cranston Public Library	Cranston	82,934	Library Aide	1	Borrower Services	\$ 14.00	No			20	HS Diploma	No	No
Cranston Public Library	Cranston	82,934	Library Aide	1	Borrower Services	\$ 14.00	No			7	HS Diploma	No	No
Cranston Public Library	Cranston	82,934	Library Assistant	1	Borrower Services	\$ 15.40	No			10	HS Diploma	No	No
Cranston Public Library	Cranston	82,934	Library Aide	1	Borrower Services	\$ 14.00	No			6	HS Diploma	No	No
Cranston Public Library	Cranston	82,934	Library Aide	1	Borrower Services	\$ 14.00	No			12	HS Diploma	No	No
Cranston Public Library	Cranston	82,934	Library Aide	1	Borrower Services	\$ 14.00	No			4	HS Diploma	No	No
Cranston Public Library	Cranston	82,934	Library Aide	1	Borrower Services	\$ 14.00	No			11	HS Diploma	No	No
Cranston Public Library	Cranston	82,934	Library Aide	1	Borrower Services	\$ 14.00	No			8	HS Diploma	No	No
Cranston Public Library	Cranston	82,934	Library Aide	1	Borrower Services	\$ 14.00	No			5	HS Diploma	No	No
Cranston Public Library	Cranston	82,934	Library Aide	1	Borrower Services	\$ 14.00	No			3	HS Diploma	No	No
Cranston Public Library	Cranston	82,934	Library Aide	1	Borrower Services	\$ 14.00	No			4	HS Diploma	No	No
Cranston Public Library	Cranston	82,934	Library Aide	1	Borrower Services	\$ 14.00	No			4	HS Diploma	No	No
Cranston Public Library	Cranston	82,934	Librarian	1	Borrower Services	\$ 21.00	No			11	MLS	No	No
Cranston Public Library	Cranston	82,934	Library Aide	1	Borrower Services	\$ 14.00	No			5	HS Diploma	No	No
Cranston Public Library	Cranston	82,934	Library Aide	1	Borrower Services	\$ 14.00	No			17	HS Diploma	No	No
Cranston Public Library	Cranston	82,934	Library Assistant	1	Borrower Services	\$ 16.40	No			26	HS Diploma	No	No
Cranston Public Library	Cranston	82,934	Library Aide	1	Borrower Services	\$ 14.00	No			12	HS Diploma	No	No
Cranston Public Library	Cranston	82,934	Librarian II	1	Branch Manager	\$ 39.46	Yes	\$ 71,813		35	MLS	Yes	No
Cranston Public Library	Cranston	82,934	Librarian I	1	Branch Manager	\$ 34.91	Yes	\$ 63,540		35	MLS	Yes	No
Cranston Public Library	Cranston	82,934	Librarian I	1	Branch Manager	\$ 39.19	Yes	\$ 71,318		35	MLS	Yes	No
Cranston Public Library	Cranston	82,934	Librarian II	1	Branch Manager	\$ 46.11	Yes	\$ 83,928		35	MLS	Yes	No
Cranston Public Library	Cranston	82,934	Librarian I	1	Collection Management	\$ 37.01	Yes	\$ 67,353		35	MLS	No	No
Cranston Public Library	Cranston	82,934	Library Assistant II	1	Collection Management	\$ 26.54	Yes	\$ 48,308		35	HS Diploma	No	No
Cranston Public Library	Cranston	82,934	Library Assistant II	1	Collection Management	\$ 24.29	Yes	\$ 44,200		35	HS Diploma	No	No
Cranston Public Library	Cranston	82,934	Library Aide	1	Collection Management	\$ 14.00	No			22	HS Diploma	No	No
Cranston Public Library	Cranston	82,934	Director	1	Director	\$ 66.60	Yes	\$ 121,212	No	35	MLS	Yes	No
Cranston Public Library	Cranston	82,934	Head Custodian	1	Facilities Maintenance	\$ 22.80	Yes	\$ 41,496		35	HS Diploma	Yes	No
Cranston Public Library	Cranston	82,934	Custodian	1	Facilities Maintenance	\$ 14.00	No			20	None	No	No
Cranston Public Library	Cranston	82,934	Custodian	1	Facilities Maintenance	\$ 14.00	No			16	None	No	No
Cranston Public Library	Cranston	82,934	Custodian	1	Facilities Maintenance	\$ 14.00	No			20	None	No	No
Cranston Public Library	Cranston	82,934	Custodian	1	Facilities Maintenance	\$ 14.00	No			20	None	No	No
Cranston Public Library	Cranston	82,934	Custodian	1	Facilities Maintenance	\$ 14.00	No			20	None	No	No
Cranston Public Library	Cranston	82,934	Librarian III	1	Information Technology	\$ 50.46	Yes	\$ 91,844		35	MLS	No	No
Cranston Public Library	Cranston	82,934	Page	1	Page	\$ 13.00	No			6	None	No	No
Cranston Public Library	Cranston	82,934	Page	1	Page	\$ 13.00	No			4	None	No	No
Cranston Public Library	Cranston	82,934	Page	1	Page	\$ 14.00	No			17	HS Diploma	No	No
Cranston Public Library	Cranston	82,934	Page	1	Page	\$ 14.00	No			10	HS Diploma	No	No
Cranston Public Library	Cranston	82,934	Page	1	Page	\$ 13.00	No			4	None	No	No
Cranston Public Library	Cranston	82,934	Page	1	Page	\$ 13.00	No			4	None	No	No
Cranston Public Library	Cranston	82,934	Page	1	Page	\$ 14.00	No			6	None	No	No

Staff Positions by Library FY2024

Location	Municipality	Population	Position Title	No. of Staff	Job Category	Hourly Rate	Hourly Rate Calculated by OLIS	Annual Salary	Annual Salary Calculated by OLIS	Hours per Week	Degree Required	Supervisor?	Vacant?
Cranston Public Library	Cranston	82,934	Page	1	Page	\$ 14.00	No			4	HS Diploma	No	No
Cranston Public Library	Cranston	82,934	Librarian I	1	Youth Services (Children & Teen)	\$ 37.01	Yes	\$ 67,353		35	MLS	No	No
Cranston Public Library	Cranston	82,934	Librarian I	1	Youth Services (Children & Teen)	\$ 32.20	No	\$ 58,601		35	MLS	No	No
Cranston Public Library	Cranston	82,934	Librarian II	1	Youth Services (Children & Teen)	\$ 37.71	Yes	\$ 68,640		35	MLS	No	No
Cranston Public Library	Cranston	82,934	Librarian I	1	Youth Services (Children & Teen)	\$ 30.97	Yes	\$ 56,358		35	MLS	No	No
Cranston Public Library	Cranston	82,934	Librarian III	1	Youth Services (Children & Teen)	\$ 50.46	Yes	\$ 91,844		35	MLS	Yes	No
Cranston Public Library	Cranston	82,934	Librarian I	1	Youth Services (Children & Teen)	\$ 34.91	Yes	\$ 63,544		35	MLS	No	No
Cranston Public Library	Cranston	82,934	Librarian	1	Youth Services (Children & Teen)	\$ 21.00	No			6	MLS	No	No
Cranston Public Library	Cranston	82,934	Librarian	1	Youth Services (Children & Teen)	\$ 21.00	No			4	MLS	No	No
Cranston Public Library	Cranston	82,934	Library Assistant	1	Youth Services (Children & Teen)	\$ 15.40	No			3	HS Diploma	No	No
Cranston Public Library	Cranston	82,934	Librarian	1	Youth Services (Children & Teen)	\$ 21.00	No			13	MLS	No	No
Cranston Public Library	Cranston	82,934	Librarian	1	Youth Services (Children & Teen)	\$ 21.00	No			11	MLS	No	No
Cranston Public Library	Cranston	82,934	Librarian	1	Youth Services (Children & Teen)	\$ 21.00	No			3	MLS	No	No
Cumberland Public Library	Cumberland	36,405	Administrative Assistant/Bookkeeper	1	Administrative Staff	\$ 27.14	No			35	HS Diploma	No	No
Cumberland Public Library	Cumberland	36,405	Reference Services Coordinator	1	Adult Services	\$ 34.20	Yes	\$ 62,236		35	MLS	Yes	No
Cumberland Public Library	Cumberland	36,405	Adult Services Coordinator	1	Adult Services	\$ 34.70	Yes	\$ 63,162		35	MLS	Yes	No
Cumberland Public Library	Cumberland	36,405	FT Reference/Outreach Coordinator	1	Adult Services	\$ 19.55	No			35	Bachelor's	No	No
Cumberland Public Library	Cumberland	36,405	PT Reference Assistant	2	Adult Services	\$ 18.32	No			24	Bachelor's	No	No
Cumberland Public Library	Cumberland	36,405	Assistant Director/Technology Coordinator	1	Assistant Director	\$ 39.88	Yes	\$ 72,585		35	MLS	Yes	No
Cumberland Public Library	Cumberland	36,405	Circulation Supervisor	1	Borrower Services	\$ 25.30	No			35	Other	Yes	No
Cumberland Public Library	Cumberland	36,405	PT Desk Assistant	1	Borrower Services	\$ 19.06	No			19.5	HS Diploma	No	No
Cumberland Public Library	Cumberland	36,405	PT Desk Assistant	5	Borrower Services	\$ 17.12	No			19.5	HS Diploma	No	No
Cumberland Public Library	Cumberland	36,405	PT Desk Assistant	1	Borrower Services	\$ 17.12	No			17	HS Diploma	No	No
Cumberland Public Library	Cumberland	36,405	Children's Services Coordinator	1	Children's Services	\$ 33.69	Yes	\$ 61,322		35	MLS	Yes	No
Cumberland Public Library	Cumberland	36,405	PT Children's Librarian	1	Children's Services	\$ 29.11	No			12.5	MLS	No	No
Cumberland Public Library	Cumberland	36,405	PT Children's Assistant	1	Children's Services	\$ 19.06	No			19.5	Bachelor's	No	No
Cumberland Public Library	Cumberland	36,405	PT Children's Assistant	1	Children's Services	\$ 18.32	No			19.5	Bachelor's	No	No
Cumberland Public Library	Cumberland	36,405	FT Cataloger	1	Collection Management	\$ 22.88	No			35	Bachelor's	Yes	No
Cumberland Public Library	Cumberland	36,405	PT Catalog Assistant	1	Collection Management	\$ 17.81	No			19.5	HS Diploma	No	No
Cumberland Public Library	Cumberland	36,405	Library Director	1	Director	\$ 48.20	Yes	\$ 87,725	No	35	MLS	Yes	No
Cumberland Public Library	Cumberland	36,405	Facilities Manager	1	Facilities Maintenance	\$ 23.23	No			40	None	Yes	No
Cumberland Public Library	Cumberland	36,405	PT Custodian	3	Facilities Maintenance	\$ 17.85	No			18	None	No	No
Cumberland Public Library	Cumberland	36,405	Library Page	4	Page	\$ 14.00	No			15	None	No	No
Cumberland Public Library	Cumberland	36,405	Teen Services Coordinator	1	Teen Services	\$ 32.73	Yes	\$ 59,563		35	MLS	Yes	No
Cumberland Public Library	Cumberland	36,405	PT Teen Assistant	1	Teen Services	\$ 19.06	No			19.5	Bachelor's	No	No
East Greenwich Free Library	East Greenwich	14,312	Administrative Assistant	1	Administrative Staff	\$ 20.40	No			35	HS Diploma	No	No
East Greenwich Free Library	East Greenwich	14,312	Head of Reference/Electronic Services/Young Adult Services	1	Adult Services	\$ 36.63	No			35	MLS	Yes	No
East Greenwich Free Library	East Greenwich	14,312	Adult Services Librarian	1	Adult Services	\$ 22.77	No			12	MLS	No	No
East Greenwich Free Library	East Greenwich	14,312	Head of Circulation/IT	1	Borrower Services	\$ 25.47	No			35	HS Diploma	Yes	No
East Greenwich Free Library	East Greenwich	14,312	Circulation Clerk	1	Borrower Services	\$ 15.66	No			23.5	HS Diploma	No	No
East Greenwich Free Library	East Greenwich	14,312	Circulation Clerk	1	Borrower Services	\$ 14.98	No			25.5	HS Diploma	No	No
East Greenwich Free Library	East Greenwich	14,312	Circulation Clerk	1	Borrower Services	\$ 14.98	No			13.75	HS Diploma	No	No
East Greenwich Free Library	East Greenwich	14,312	Circulation Clerk	1	Borrower Services	\$ 14.98	No			8.25	HS Diploma	No	No
East Greenwich Free Library	East Greenwich	14,312	Head of Children's Services	1	Children's Services	\$ 32.43	No			35	MLS	Yes	No
East Greenwich Free Library	East Greenwich	14,312	Children's Librarian	1	Children's Services	\$ 25.83	No			13	MLS	No	No
East Greenwich Free Library	East Greenwich	14,312	Children's Librarian	1	Children's Services	\$ 25.14	No			10.5	MLS	No	No
East Greenwich Free Library	East Greenwich	14,312	Children's/Adult/Programming Librarian	1	Children's Services	\$ 25.75	No			20	MLS	No	No
East Greenwich Free Library	East Greenwich	14,312	Processing Clerk	1	Collection Management	\$ 14.98	No			12	HS Diploma	No	No
East Greenwich Free Library	East Greenwich	14,312	Director	1	Director	\$ 45.00	No	\$ 81,900	Yes	35	MLS	Yes	No
East Greenwich Free Library	East Greenwich	14,312	Custodian	1	Facilities Maintenance	\$ 14.98	No			18	HS Diploma	No	No
East Providence Public Library	East Providence	47,139	Administrative Assistant	1	Administrative Staff	\$ 29.04	Yes	\$ 52,844		35	HS Diploma	No	No
East Providence Public Library	East Providence	47,139	Head of Reference	1	Adult Services	\$ 41.97	Yes	\$ 76,382		35	MLS	Yes	No
East Providence Public Library	East Providence	47,139	Reference Librarian, part time	2	Adult Services	\$ 20.00	No			19	Bachelor's	No	No
East Providence Public Library	East Providence	47,139	Public Services Librarian	1	Adult Services	\$ 37.19	Yes	\$ 67,678		35	MLS	No	No
East Providence Public Library	East Providence	47,139	Assistant Director of Library Services	1	Assistant Director	\$ 41.97	Yes	\$ 76,382		35	MLS	Yes	No
East Providence Public Library	East Providence	47,139	Circulation Coordinator	1	Borrower Services	\$ 27.69	Yes	\$ 50,389		35	HS Diploma	Yes	No
East Providence Public Library	East Providence	47,139	Library Aide	4	Borrower Services	\$ 25.44	Yes	\$ 46,295		35	HS Diploma	No	No
East Providence Public Library	East Providence	47,139	Library Aide, part time	1	Borrower Services	\$ 17.00	No			19	HS Diploma	No	No
East Providence Public Library	East Providence	47,139	Library Aide, part time	1	Borrower Services	\$ 17.00	No			19	None	No	Yes
East Providence Public Library	East Providence	47,139	Library Aide	1	Borrower Services	\$ 25.44	Yes	\$ 46,295		35	HS Diploma	No	Yes
East Providence Public Library	East Providence	47,139	Branch Manager	1	Branch Manager	\$ 37.19	Yes	\$ 67,678		35	MLS	Yes	No
East Providence Public Library	East Providence	47,139	Coordinator of Learning and Discovery	1	Branch Manager	\$ 37.19	Yes	\$ 67,678		35	Bachelor's	Yes	No
East Providence Public Library	East Providence	47,139	Youth Services Coordinator	1	Children's Services	\$ 37.19	Yes	\$ 67,678		35	MLS	Yes	No
East Providence Public Library	East Providence	47,139	Youth Services Librarian	1	Children's Services	\$ 37.19	Yes	\$ 67,678		35	MLS	No	No
East Providence Public Library	East Providence	47,139	Youth Services Assistant	1	Children's Services	\$ 26.64	Yes	\$ 48,480		35	HS Diploma	No	No
East Providence Public Library	East Providence	47,139	Youth Services Librarian, part time	1	Children's Services	\$ 20.00	No			19	Bachelor's	No	No
East Providence Public Library	East Providence	47,139	Cataloging and Acquisitions Librarian	1	Collection Management	\$ 37.19	Yes	\$ 67,678		35	MLS	Yes	No
East Providence Public Library	East Providence	47,139	Library Aide: Cataloging and Acquisitions	1	Collection Management	\$ 25.44	Yes	\$ 46,295		35	HS Diploma	No	No
East Providence Public Library	East Providence	47,139	Director of Library Services	1	Director	\$ 50.92	Yes	\$ 92,671	No	35	MLS	Yes	No
East Providence Public Library	East Providence	47,139	Literacy Coordinator	1	Educator	\$ 35.60	Yes	\$ 64,800		35	Master's	Yes	No
East Providence Public Library	East Providence	47,139	ESOL Teacher	1	Educator	\$ 28.00	No			19	Bachelor's	No	Yes
East Providence Public Library	East Providence	47,139	Fuller Assistant	1	Educator	\$ 27.69	Yes	\$ 50,389		35	HS Diploma	No	No
East Providence Public Library	East Providence	47,139	Fuller Assistant, part time	1	Educator	\$ 15.00	No			19	HS Diploma	No	No

Staff Positions by Library FY2024

Location	Municipality	Population	Position Title	No. of Staff	Job Category	Hourly Rate	Hourly Rate Calculated by OLIS	Annual Salary	Annual Salary Calculated by OLIS	Hours per Week	Degree Required	Supervisor?	Vacant?
East Providence Public Library	East Providence	47,139	Custodian	1	Facilities Maintenance	\$ 26.52	Yes	\$ 55,166		40	HS Diploma	No	No
East Providence Public Library	East Providence	47,139	Custodian, part time	1	Facilities Maintenance	\$ 15.00	No			19	HS Diploma	No	No
East Providence Public Library	East Providence	47,139	Systems Librarian	1	Information Technology	\$ 37.19	Yes	\$ 67,678		35	MLS	No	No
East Providence Public Library	East Providence	47,139	Teen Services Librarian	1	Teen Services	\$ 37.19	Yes	\$ 67,678		35	MLS	Yes	No
Exeter Public Library	Exeter	6,460	Library Assistant	3	Borrower Services	\$ 17.00	No			15	HS Diploma	No	No
Exeter Public Library	Exeter	6,460	Library Director	1	Director	\$ 37.67	Yes	\$ 68,557	No	35	MLS	Yes	No
Exeter Public Library	Exeter	6,460	Library Page	1	Page	\$ 15.00	No			11	None	No	No
Exeter Public Library	Exeter	6,460	Youth Services Librarian	1	Youth Services (Children & Teen)	\$ 24.58	Yes	\$ 44,743		35	MLS	No	No
Libraries of Foster	Foster	4,469	Deputy Director	1	Assistant Director	\$ 18.86	No			16	Bachelor's	Yes	No
Libraries of Foster	Foster	4,469	Library Assistant	3	Borrower Services	\$ 14.00	No			10	HS Diploma	No	No
Libraries of Foster	Foster	4,469	Library Assistant	1	Borrower Services	\$ 14.00	No			25	HS Diploma	No	No
Libraries of Foster	Foster	4,469	Library Assistant	1	Borrower Services	\$ 14.00	No			18	HS Diploma	No	No
Libraries of Foster	Foster	4,469	Library Assistant	1	Children's Services	\$ 14.00	No			18	Bachelor's	No	No
Libraries of Foster	Foster	4,469	Director	1	Director	\$ 20.37	Yes	\$ 42,379	No	40	MLS	Yes	No
Libraries of Foster	Foster	4,469	Custodian	1	Facilities Maintenance	\$ 32.77	No			2	HS Diploma	No	No
Libraries of Foster	Foster	4,469	Library Assistant	1	Information Technology	\$ 14.00	No			14	Bachelor's	No	No
Libraries of Foster	Foster	4,469	Youth Services Coordinator	1	Youth Services (Children & Teen)	\$ 18.27	No			11	Bachelor's	Yes	No
Glocester Manton Free Public Library	Glocester	4,489	Circulation Head	1	Borrower Services	\$ 16.00	No			15	HS Diploma	Yes	No
Glocester Manton Free Public Library	Glocester	4,489	Circulation Assistant	1	Borrower Services	\$ 15.00	No			15	HS Diploma	No	No
Glocester Manton Free Public Library	Glocester	4,489	Circulation Assistant	1	Borrower Services	\$ 15.00	No			8	HS Diploma	No	No
Glocester Manton Free Public Library	Glocester	4,489	Children's Assistant	1	Children's Services	\$ 20.50	Yes	\$ 26,650		25	Bachelor's	Yes	No
Glocester Manton Free Public Library	Glocester	4,489	Cataloger and Computer Technology	1	Collection Management	\$ 22.12	Yes	\$ 13,800		12	HS Diploma	Yes	No
Glocester Manton Free Public Library	Glocester	4,489	Library Director	1	Director	\$ 29.12	Yes	\$ 64,412	No	40	MLS	Yes	No
Harmony Library	Glocester	5,485	Bookkeeper	1	Administrative Staff	\$ 25.00	No			6	Other	No	No
Harmony Library	Glocester	5,485	Adult Services Librarian	1	Adult Services	\$ 23.69	No			13	MLS	Yes	No
Harmony Library	Glocester	5,485	Circulation Head	1	Borrower Services	\$ 18.04	No			17	HS Diploma	Yes	No
Harmony Library	Glocester	5,485	Circulation Assistant	1	Borrower Services	\$ 17.22	No			17	HS Diploma	Yes	No
Harmony Library	Glocester	5,485	Circulation Assistant	1	Borrower Services	\$ 15.45	No			20.5	HS Diploma	No	No
Harmony Library	Glocester	5,485	Children's Librarian	1	Children's Services	\$ 28.57	Yes	\$ 52,000		35	MLS	Yes	No
Harmony Library	Glocester	5,485	Cataloger	1	Collection Management	\$ 18.04	No			13	HS Diploma	Yes	No
Harmony Library	Glocester	5,485	Janitor	1	Facilities Maintenance	\$ 40.00	Yes	\$ 4,160		2	HS Diploma	No	No
Harmony Library	Glocester	5,485	Technology and Reference Librarian	1	Information Technology	\$ 29.25	No			17	MLS	Yes	No
Harmony Library	Glocester	5,485	Page	1	Page	\$ 15.00	No			6	None	No	No
Ashaway Free Library	Hopkinton	3,778	Bookkeeper	1	Administrative Staff	\$ 21.50	No			2	HS Diploma	No	No
Ashaway Free Library	Hopkinton	3,778	Staff Librarian	1	Borrower Services	\$ 15.25	No			15	HS Diploma	No	No
Ashaway Free Library	Hopkinton	3,778	Staff Librarian	1	Borrower Services	\$ 14.04	No			28	HS Diploma	No	No
Ashaway Free Library	Hopkinton	3,778	Staff Librarian	1	Borrower Services	\$ 14.04	No			10	HS Diploma	No	No
Ashaway Free Library	Hopkinton	3,778	Storyhour Coordinator	1	Children's Services	\$ 21.65	No			1	HS Diploma	No	Yes
Ashaway Free Library	Hopkinton	3,778	Library Director	1	Director	\$ 26.71	No	\$ 38,890	Yes	28	MLS	Yes	No
Langworthy Public Library	Hopkinton	4,620	Library Associate	1	Adult Services	\$ 14.00	No			11	HS Diploma	No	No
Langworthy Public Library	Hopkinton	4,620	Senior Library Associate	1	Adult Services	\$ 15.25	No			16	HS Diploma	No	No
Langworthy Public Library	Hopkinton	4,620	Library Associate	1	Adult Services	\$ 14.00	No			4	HS Diploma	No	No
Langworthy Public Library	Hopkinton	4,620	Library Associate	1	Children's Services	\$ 14.00	No			20	HS Diploma	No	No
Langworthy Public Library	Hopkinton	4,620	Director	1	Director	\$ 25.00	No	\$ 45,500	Yes	35	MLS	Yes	No
Jamestown Philomenian Library	Jamestown	5,559	Community Outreach Librarian	1	Adult Services	\$ 23.00	No			40	MLS	Yes	No
Jamestown Philomenian Library	Jamestown	5,559	Circulation Supervisor	1	Borrower Services	\$ 18.55	No			35	Bachelor's	Yes	No
Jamestown Philomenian Library	Jamestown	5,559	Library Assistant	1	Borrower Services	\$ 16.48	No			19	HS Diploma	No	No
Jamestown Philomenian Library	Jamestown	5,559	Library Assistant	1	Borrower Services	\$ 17.51	No			14	HS Diploma	No	No
Jamestown Philomenian Library	Jamestown	5,559	Library Assistant	1	Borrower Services	\$ 17.51	No			19	HS Diploma	No	No
Jamestown Philomenian Library	Jamestown	5,559	Library Assistant	1	Borrower Services	\$ 17.51	No			10	HS Diploma	No	No
Jamestown Philomenian Library	Jamestown	5,559	Library Assistant	1	Borrower Services	\$ 17.51	No			13	HS Diploma	No	No
Jamestown Philomenian Library	Jamestown	5,559	Library Director	1	Director	\$ 39.43	No	\$ 82,014	Yes	40	MLS	Yes	No
Jamestown Philomenian Library	Jamestown	5,559	Youth Services Librarian	1	Youth Services (Children & Teen)	\$ 25.52	No			40	MLS	Yes	No
Jamestown Philomenian Library	Jamestown	5,559	Youth Services Assistant	1	Youth Services (Children & Teen)	\$ 17.50	No			40	Bachelor's	Yes	No
Marian J. Mohr Memorial Library	Johnston	29,568	Public Services Librarian	1	Adult Services	\$ 20.00	Yes	\$ 36,400		35	MLS	Yes	No
Marian J. Mohr Memorial Library	Johnston	29,568	Librarian	1	Adult Services	\$ 20.00	No			6	MLS	Yes	No
Marian J. Mohr Memorial Library	Johnston	29,568	Library Assistant	3	Borrower Services	\$ 14.00	No			19	None	No	No
Marian J. Mohr Memorial Library	Johnston	29,568	Library Assistant	2	Borrower Services	\$ 14.00	No			12	None	No	No
Marian J. Mohr Memorial Library	Johnston	29,568	Desk Assistant/Program Specialist	1	Borrower Services	\$ 20.00	Yes	\$ 36,400		35	None	No	No
Marian J. Mohr Memorial Library	Johnston	29,568	Desk Assistant/Administrative Assistant	1	Borrower Services	\$ 19.87	Yes	\$ 36,163		35	None	No	No
Marian J. Mohr Memorial Library	Johnston	29,568	Childrens Librarian	1	Children's Services	\$ 25.00	Yes	\$ 45,500		35	MLS	Yes	No
Marian J. Mohr Memorial Library	Johnston	29,568	Childrens Assistant	1	Children's Services	\$ 14.00	No			18	None	No	No
Marian J. Mohr Memorial Library	Johnston	29,568	Childrens Assistant	1	Children's Services	\$ 14.00	No			12	None	No	No
Marian J. Mohr Memorial Library	Johnston	29,568	Childrens Assistant	1	Children's Services	\$ 14.00	No			6	None	No	No
Marian J. Mohr Memorial Library	Johnston	29,568	Aide/Technical Assistant	1	Collection Management	\$ 14.00	No			12	None	No	No
Marian J. Mohr Memorial Library	Johnston	29,568	Library Director	1	Director	\$ 35.71	Yes	\$ 65,000	No	35	MLS	Yes	No
Marian J. Mohr Memorial Library	Johnston	29,568	Library Aide	1	Page	\$ 14.00	No			12	None	No	No
Marian J. Mohr Memorial Library	Johnston	29,568	Young Adult Librarian	1	Teen Services	\$ 20.00	Yes	\$ 36,400		35	MLS	Yes	No
Lincoln Public Library	Lincoln	22,529	Secretary/Bookkeeper	1	Administrative Staff	\$ 23.13	No			35	Other	No	No
Lincoln Public Library	Lincoln	22,529	Reference Librarian PT	1	Adult Services	\$ 24.00	No			8	Master's	No	No
Lincoln Public Library	Lincoln	22,529	Assistant Director	1	Assistant Director	\$ 35.71	Yes	\$ 65,000		35	MLS	Yes	No
Lincoln Public Library	Lincoln	22,529	Tech III PS	1	Borrower Services	\$ 22.54	No			35	HS Diploma	Yes	No

Staff Positions by Library FY2024

Location	Municipality	Population	Position Title	No. of Staff	Job Category	Hourly Rate	Hourly Rate Calculated by OLIS	Annual Salary	Annual Salary Calculated by OLIS	Hours per Week	Degree Required	Supervisor?	Vacant?
Lincoln Public Library	Lincoln	22,529	Tech II PS	3	Borrower Services	\$ 19.08	No			35	HS Diploma	No	No
Lincoln Public Library	Lincoln	22,529	Tech II PS	1	Borrower Services	\$ 17.47	No			35	HS Diploma	No	No
Lincoln Public Library	Lincoln	22,529	Circulation Clerk	1	Borrower Services	\$ 16.00	No			19.5	None	No	No
Lincoln Public Library	Lincoln	22,529	Circulation Clerk	1	Borrower Services	\$ 16.00	No			19	None	No	No
Lincoln Public Library	Lincoln	22,529	Children's Librarian	1	Children's Services	\$ 32.31	No			35	MLS	Yes	No
Lincoln Public Library	Lincoln	22,529	Children's Librarian PT	1	Children's Services	\$ 22.00	No			14	Master's	No	No
Lincoln Public Library	Lincoln	22,529	Children's Librarian PT	1	Children's Services	\$ 24.00	No			9.5	Master's	No	No
Lincoln Public Library	Lincoln	22,529	Children's Librarian PT	1	Children's Services	\$ 24.00	No			4	Master's	No	No
Lincoln Public Library	Lincoln	22,529	Tech III TS	1	Collection Management	\$ 22.54	No			35	HS Diploma	No	No
Lincoln Public Library	Lincoln	22,529	Director	1	Director	\$ 42.29	Yes	\$ 76,975	No	35	MLS	Yes	No
Lincoln Public Library	Lincoln	22,529	Custodian	1	Facilities Maintenance	\$ 21.75	No			20	None	No	No
Lincoln Public Library	Lincoln	22,529	Technology Librarian	1	Information Technology	\$ 33.57	No			35	MLS	Yes	No
Lincoln Public Library	Lincoln	22,529	Page	3	Page	\$ 14.00	No			9	None	No	No
Lincoln Public Library	Lincoln	22,529	Page	2	Page	\$ 14.00	No			6	None	No	No
Lincoln Public Library	Lincoln	22,529	Reference/Teen Librarian	1	Teen Services	\$ 30.77	No			35	MLS	No	No
Brownell Library, Home of Little Compton	Little Compton	3,616	Circulation Associate/Technical Services	1	Borrower Services	\$ 20.67	No			20.5	HS Diploma	No	No
Brownell Library, Home of Little Compton	Little Compton	3,616	Circulation Associate/Marketing & Social Media	1	Borrower Services	\$ 18.54	No			27.5	HS Diploma	No	No
Brownell Library, Home of Little Compton	Little Compton	3,616	On Call	1	Borrower Services	\$ 18.14	No			0	HS Diploma	No	No
Brownell Library, Home of Little Compton	Little Compton	3,616	On Call	1	Borrower Services	\$ 20.00	No			0	HS Diploma	No	No
Brownell Library, Home of Little Compton	Little Compton	3,616	Director	1	Director	\$ 34.07	No	\$ 62,007	Yes	35	MLS	Yes	No
Brownell Library, Home of Little Compton	Little Compton	3,616	Youth Services Librarian	1	Youth Services (Children & Teen)	\$ 27.48	No			35	MLS	Yes	No
Middletown Public Library	Middletown	17,075	Finance & Admin Assistant	1	Administrative Staff	\$ 17.50	No			15	Other	No	No
Middletown Public Library	Middletown	17,075	Supervising Librarian of Adult Services	1	Adult Services	\$ 30.22	Yes	\$ 55,000		35	MLS	Yes	No
Middletown Public Library	Middletown	17,075	Programming and Marketing Assistant	1	Adult Services	\$ 16.48	No			25	HS Diploma	No	No
Middletown Public Library	Middletown	17,075	Circulation Supervisor	1	Borrower Services	\$ 23.69	No			35	Other	Yes	Yes
Middletown Public Library	Middletown	17,075	Circulation Assistant	1	Borrower Services	\$ 16.48	No			25	HS Diploma	No	No
Middletown Public Library	Middletown	17,075	Circulation Assistant	1	Borrower Services	\$ 16.48	No			25	HS Diploma	No	No
Middletown Public Library	Middletown	17,075	Circulation Assistant	1	Borrower Services	\$ 16.48	No			25	HS Diploma	No	No
Middletown Public Library	Middletown	17,075	Circulation Assistant	1	Borrower Services	\$ 16.48	No			20	HS Diploma	No	No
Middletown Public Library	Middletown	17,075	Tech Services Supervisor	1	Collection Management	\$ 26.63	No			35	Other	Yes	No
Middletown Public Library	Middletown	17,075	Tech Services Assistant	1	Collection Management	\$ 16.48	No			20	HS Diploma	No	No
Middletown Public Library	Middletown	17,075	Library Director	1	Director	\$ 47.25	Yes	\$ 86,000	No	35	MLS	Yes	No
Middletown Public Library	Middletown	17,075	Library Page	1	Page	\$ 14.00	No			10	None	No	No
Middletown Public Library	Middletown	17,075	Library Page	1	Page	\$ 14.00	No			10	None	No	No
Middletown Public Library	Middletown	17,075	Supervising Librarian of Youth Services	1	Youth Services (Children & Teen)	\$ 30.22	Yes	\$ 55,000		35	MLS	Yes	No
Middletown Public Library	Middletown	17,075	Youth Services Assistant	1	Youth Services (Children & Teen)	\$ 16.48	No			25	HS Diploma	No	No
Middletown Public Library	Middletown	17,075	Youth Services Assistant	1	Youth Services (Children & Teen)	\$ 16.48	No			25	HS Diploma	No	No
Maury Loontjens Memorial Library	Narragansett	14,532	Patron Services Librarian	1	Adult Services	\$ 21.23	Yes	\$ 44,158		40	MLS	Yes	No
Maury Loontjens Memorial Library	Narragansett	14,532	Reference and Information Librarian	1	Adult Services	\$ 27.92	Yes	\$ 58,073		40	MLS	Yes	No
Maury Loontjens Memorial Library	Narragansett	14,532	Library Technician	1	Borrower Services	\$ 15.17	No			4	HS Diploma	No	No
Maury Loontjens Memorial Library	Narragansett	14,532	Library Technician	1	Borrower Services	\$ 14.50	No			13	HS Diploma	No	No
Maury Loontjens Memorial Library	Narragansett	14,532	Library Technician	1	Borrower Services	\$ 15.84	No			9	HS Diploma	No	No
Maury Loontjens Memorial Library	Narragansett	14,532	Library Technician	1	Borrower Services	\$ 15.17	No			26	HS Diploma	No	No
Maury Loontjens Memorial Library	Narragansett	14,532	Circulation Supervisor	1	Borrower Services	\$ 15.73	No			18	Bachelor's	Yes	No
Maury Loontjens Memorial Library	Narragansett	14,532	Library Technician	1	Borrower Services	\$ 18.66	No			15	HS Diploma	No	No
Maury Loontjens Memorial Library	Narragansett	14,532	Library Technician	1	Borrower Services	\$ 14.00	No			13	HS Diploma	No	No
Maury Loontjens Memorial Library	Narragansett	14,532	Library Technician	1	Borrower Services	\$ 14.00	No			15	HS Diploma	No	No
Maury Loontjens Memorial Library	Narragansett	14,532	Library Technician	1	Borrower Services	\$ 14.35	No			7	HS Diploma	No	No
Maury Loontjens Memorial Library	Narragansett	14,532	Library Technician	1	Borrower Services	\$ 15.38	No			15	HS Diploma	No	No
Maury Loontjens Memorial Library	Narragansett	14,532	Library Technician	1	Borrower Services	\$ 14.00	No			10	HS Diploma	No	No
Maury Loontjens Memorial Library	Narragansett	14,532	Library Technician	1	Borrower Services	\$ 14.50	No			11	HS Diploma	No	No
Maury Loontjens Memorial Library	Narragansett	14,532	Library Technician	1	Borrower Services	\$ 15.02	No			4	HS Diploma	No	No
Maury Loontjens Memorial Library	Narragansett	14,532	Library Technician	1	Children's Services	\$ 14.00	No			19.5	HS Diploma	No	No
Maury Loontjens Memorial Library	Narragansett	14,532	Director	1	Director	\$ 48.13	Yes	\$ 100,104	No	40	MLS	Yes	No
Maury Loontjens Memorial Library	Narragansett	14,532	Library Page	1	Page	\$ 14.31	No			20	HS Diploma	No	No
Maury Loontjens Memorial Library	Narragansett	14,532	Children's Associate	1	Youth Services (Children & Teen)	\$ 24.65	Yes	\$ 44,854		35	HS Diploma	Yes	No
Maury Loontjens Memorial Library	Narragansett	14,532	Youth Services Librarian	1	Youth Services (Children & Teen)	\$ 24.09	Yes	\$ 50,107		40	MLS	Yes	No
Island Free Library	New Shoreham	1,410	Adult Programming and Community Outreach Librarian	1	Adult Services	\$ 16.87	No			20	Master's	No	No
Island Free Library	New Shoreham	1,410	Circulation Clerk	2	Borrower Services	\$ 17.73	No			30	HS Diploma	No	No
Island Free Library	New Shoreham	1,410	Youth Services Aide	1	Children's Services	\$ 16.87	No			20	HS Diploma	No	Yes
Island Free Library	New Shoreham	1,410	Cataloging Librarian and Archivist	1	Collection Management	\$ 24.93	No			40	MLS	Yes	No
Island Free Library	New Shoreham	1,410	Director	1	Director	\$ 38.83	Yes	\$ 80,776	No	40	MLS	Yes	No
Island Free Library	New Shoreham	1,410	Youth Services Librarian	1	Youth Services (Children & Teen)	\$ 23.26	No			40	MLS	Yes	No
Newport Public Library	Newport	25,163	Administrative Assistant	1	Administrative Staff	\$ 22.53	No	\$ 41,000		35	Bachelor's	No	No
Newport Public Library	Newport	25,163	Administrative Assistant	1	Administrative Staff	\$ 20.88	No			20	Bachelor's	No	Yes
Newport Public Library	Newport	25,163	Systems Technician	1	Administrative Staff	\$ 26.32	No			15	None	No	No
Newport Public Library	Newport	25,163	Head of Adult Services	1	Adult Services	\$ 38.51	No	\$ 70,081		35	MLS	Yes	No
Newport Public Library	Newport	25,163	Librarian	1	Adult Services	\$ 25.74	No	\$ 46,848		35	MLS	No	No
Newport Public Library	Newport	25,163	Librarian	1	Adult Services	\$ 26.51	No	\$ 48,254		35	MLS	No	No
Newport Public Library	Newport	25,163	Librarian	1	Adult Services	\$ 29.87	No	\$ 54,363		35	MLS	No	No
Newport Public Library	Newport	25,163	Library Associate	1	Borrower Services	\$ 17.19	No	\$ 31,287		35	Bachelor's	No	No
Newport Public Library	Newport	25,163	Library Associate	1	Borrower Services	\$ 17.88	No	\$ 32,542		35	Bachelor's	No	No

Staff Positions by Library FY2024

Location	Municipality	Population	Position Title	No. of Staff	Job Category	Hourly Rate	Hourly Rate Calculated by OLIS	Annual Salary	Annual Salary Calculated by OLIS	Hours per Week	Degree Required	Supervisor?	Vacant?
Newport Public Library	Newport	25,163	Library Aide	1	Borrower Services	\$ 18.91	No			25	HS Diploma	No	No
Newport Public Library	Newport	25,163	Library Aide	1	Borrower Services	\$ 18.91	No			14	HS Diploma	No	No
Newport Public Library	Newport	25,163	Library Aide	1	Borrower Services	\$ 18.91	No			9	HS Diploma	No	No
Newport Public Library	Newport	25,163	Head of Borrower Services	1	Borrower Services	\$ 30.17	No	\$ 54,916		35	MLS	Yes	No
Newport Public Library	Newport	25,163	Outreach Librarian	1	Borrower Services	\$ 24.99	No	\$ 45,475		35	MLS	No	No
Newport Public Library	Newport	25,163	Library Associate	1	Children's Services	\$ 17.19	No	\$ 31,287		35	Bachelor's	No	No
Newport Public Library	Newport	25,163	Head of Children's Services	1	Children's Services	\$ 37.30	No	\$ 67,877		35	MLS	Yes	No
Newport Public Library	Newport	25,163	Librarian	1	Children's Services	\$ 30.16	No	\$ 54,898		35	MLS	No	No
Newport Public Library	Newport	25,163	Librarian	1	Children's Services	\$ 29.87	No	\$ 54,363		35	MLS	No	No
Newport Public Library	Newport	25,163	Librarian	1	Children's Services	\$ 28.72	No			18	MLS	No	No
Newport Public Library	Newport	25,163	Cataloger	1	Collection Management	\$ 22.87	No	\$ 41,620		35	Bachelor's	No	No
Newport Public Library	Newport	25,163	Cataloger	1	Collection Management	\$ 16.36	No	\$ 29,780		35	Bachelor's	No	No
Newport Public Library	Newport	25,163	Head of Collection Management	1	Collection Management	\$ 32.60	No	\$ 59,333		35	MLS	Yes	No
Newport Public Library	Newport	25,163	Lead Cataloger	1	Collection Management	\$ 27.09	No	\$ 49,300		35	MLS	No	No
Newport Public Library	Newport	25,163	Library Director	1	Director	\$ 53.30	No	\$ 97,004	No	35	MLS	Yes	No
Newport Public Library	Newport	25,163	Property Manager	1	Facilities Maintenance	\$ 46.70	No	\$ 85,000		37.5	None	Yes	No
Newport Public Library	Newport	25,163	Facilities	1	Facilities Maintenance	\$ 27.39	No	\$ 49,853		38	None	No	No
Newport Public Library	Newport	25,163	Facilities	1	Facilities Maintenance	\$ 19.34	No	\$ 35,207		38	None	No	No
Newport Public Library	Newport	25,163	Facilities	1	Facilities Maintenance	\$ 15.45	No			30	None	No	No
Newport Public Library	Newport	25,163	Page	1	Page	\$ 15.00	No			28	HS Diploma	No	No
Newport Public Library	Newport	25,163	Page	1	Page	\$ 15.00	No			12	HS Diploma	No	No
Newport Public Library	Newport	25,163	Library Aide	1	Teen Services	\$ 18.36	No			20	Bachelor's	No	No
Newport Public Library	Newport	25,163	Librarian	1	Teen Services	\$ 28.72	No			25	MLS	No	No
Davisville Free Library	North Kingstown	5,991	Librarian	1	Adult Services	\$ 17.00	No			10	Bachelor's	Yes	No
Davisville Free Library	North Kingstown	5,991	Library Assistant	1	Children's Services	\$ 16.00	No			11.5	HS Diploma	Yes	No
Davisville Free Library	North Kingstown	5,991	Director	1	Director	\$ 24.00	No	\$ 24,336	Yes	19.5	MLS	Yes	No
Davisville Free Library	North Kingstown	5,991	Library Assistant	1	Page	\$ 14.00	No			9	None	No	No
North Kingstown Free Library	North Kingstown	19,821	Community Outreach Coordinator	1	Administrative Staff	\$ 28.25	No			35	MLS	No	Yes
North Kingstown Free Library	North Kingstown	19,821	Reference & Non-fiction coordinator	1	Adult Services	\$ 33.64	No			35	MLS	Yes	No
North Kingstown Free Library	North Kingstown	19,821	Fiction & Reader's Advisory Coordinator	1	Adult Services	\$ 33.64	No			35	MLS	Yes	N
North Kingstown Free Library	North Kingstown	19,821	Assistant Librarian/Reference	1	Adult Services	\$ 32.60	No			35	MLS	No	No
North Kingstown Free Library	North Kingstown	19,821	Library Tech	1	Adult Services	\$ 21.73	No			19	HS Diploma	No	No
North Kingstown Free Library	North Kingstown	19,821	Assistant Director	1	Assistant Director	\$ 44.49	No			35	MLS	Yes	No
North Kingstown Free Library	North Kingstown	19,821	Circulation Supervisor	1	Borrower Services	\$ 22.75	No			35	Bachelor's	Yes	No
North Kingstown Free Library	North Kingstown	19,821	Library Tech	1	Borrower Services	\$ 20.98	No			19	HS Diploma	No	No
North Kingstown Free Library	North Kingstown	19,821	Library Aide	1	Borrower Services	\$ 16.37	No			19	HS Diploma	No	No
North Kingstown Free Library	North Kingstown	19,821	Senior Library Clerk	1	Borrower Services	\$ 23.82	No			35	HS Diploma	No	No
North Kingstown Free Library	North Kingstown	19,821	Library Clerk	1	Borrower Services	\$ 22.75	No			26	HS Diploma	No	No
North Kingstown Free Library	North Kingstown	19,821	Assistant Librarian/Preschool	1	Children's Services	\$ 27.03	No			35	MLS	No	No
North Kingstown Free Library	North Kingstown	19,821	Library Tech	1	Children's Services	\$ 21.73	No			35	HS Diploma	No	No
North Kingstown Free Library	North Kingstown	19,821	Library Tech	1	Children's Services	\$ 23.81	No			35	HS Diploma	No	No
North Kingstown Free Library	North Kingstown	19,821	Assistant Librarian/Acquisitions	1	Collection Management	\$ 30.09	No			35	MLS	No	No
North Kingstown Free Library	North Kingstown	19,821	Director	1	Director	\$ 50.00	No	\$ 91,000	Yes	35	MLS	Yes	No
North Kingstown Free Library	North Kingstown	19,821	Custodian	1	Facilities Maintenance	\$ 23.64	No			24	HS Diploma	No	No
North Kingstown Free Library	North Kingstown	19,821	Custodian	1	Facilities Maintenance	\$ 22.66	No			22	HS Diploma	No	No
North Kingstown Free Library	North Kingstown	19,821	Technology Coordinator	1	Information Technology	\$ 28.25	No			35	MLS	No	Yes
North Kingstown Free Library	North Kingstown	19,821	Youth Services Coordinator	1	Youth Services (Children & Teen)	\$ 33.64	No			35	MLS	Yes	No
Willett Free Library	North Kingstown	1,920	Library Technician	2	Borrower Services	\$ 16.00	No			11.5	HS Diploma	No	No
Willett Free Library	North Kingstown	1,920	Library Technician	1	Borrower Services	\$ 16.00	No			6.5	HS Diploma	No	No
Willett Free Library	North Kingstown	1,920	Library Technician	1	Borrower Services	\$ 16.00	No			1.5	HS Diploma	No	No
Willett Free Library	North Kingstown	1,920	Director	1	Director	\$ 30.00	No	\$ 39,000	Yes	25	MLS	Yes	No
Mayor Salvatore Mancini Union Free Library	North Providence	34,114	Administrative Assistant	1	Administrative Staff	\$ 18.84	Yes	\$ 34,292		35	Bachelor's	Yes	No
Mayor Salvatore Mancini Union Free Library	North Providence	34,114	Reference Associate	2	Adult Services	\$ 14.00	No			15	HS Diploma	No	No
Mayor Salvatore Mancini Union Free Library	North Providence	34,114	Reference Associate	1	Adult Services	\$ 14.00	No			26	HS Diploma	No	No
Mayor Salvatore Mancini Union Free Library	North Providence	34,114	Reference Associate	1	Adult Services	\$ 14.00	No			20	HS Diploma	Yes	No
Mayor Salvatore Mancini Union Free Library	North Providence	34,114	Deputy Director	1	Assistant Director	\$ 34.15	Yes	\$ 62,154		35	Master's	Yes	No
Mayor Salvatore Mancini Union Free Library	North Providence	34,114	Circulation Manager	1	Borrower Services	\$ 24.85	Yes	\$ 45,232		35	Bachelor's	Yes	No
Mayor Salvatore Mancini Union Free Library	North Providence	34,114	Assistant Circulation Manager	1	Borrower Services	\$ 22.09	Yes	\$ 40,206		35	Bachelor's	Yes	No
Mayor Salvatore Mancini Union Free Library	North Providence	34,114	Circulation Assistant	3	Borrower Services	\$ 14.00	No			15	None	No	No
Mayor Salvatore Mancini Union Free Library	North Providence	34,114	Circulation Assistant	3	Borrower Services	\$ 14.00	No			17	None	No	No
Mayor Salvatore Mancini Union Free Library	North Providence	34,114	Circulation Assistant	1	Borrower Services	\$ 14.00	No			16	None	No	No
Mayor Salvatore Mancini Union Free Library	North Providence	34,114	Circulation Assistant	1	Borrower Services	\$ 14.00	No			18	None	No	No
Mayor Salvatore Mancini Union Free Library	North Providence	34,114	Senior Circulation Assistant	1	Borrower Services	\$ 16.82	No			17	None	No	No
Mayor Salvatore Mancini Union Free Library	North Providence	34,114	Senior Circulation Assistant	1	Borrower Services	\$ 14.39	No			17	None	No	No
Mayor Salvatore Mancini Union Free Library	North Providence	34,114	Circulation Supervisor	1	Borrower Services	\$ 16.00	No			19	None	Yes	No
Mayor Salvatore Mancini Union Free Library	North Providence	34,114	Cataloging Librarian	1	Collection Management	\$ 28.86	Yes	\$ 52,531		35	MLS	Yes	No
Mayor Salvatore Mancini Union Free Library	North Providence	34,114	Director	1	Director	\$ 41.64	Yes	\$ 75,785	No	35	MLS	Yes	No
Mayor Salvatore Mancini Union Free Library	North Providence	34,114	Custodian	1	Facilities Maintenance	\$ 14.05	No			24	HS Diploma	No	No
Mayor Salvatore Mancini Union Free Library	North Providence	34,114	Head of Information and Technology	1	Information Technology	\$ 30.02	Yes	\$ 54,632		35	MLS	Yes	No
Mayor Salvatore Mancini Union Free Library	North Providence	34,114	Technology Assistant / Reference Supervisor	1	Information Technology	\$ 18.00	Yes	\$ 24,336		26	Bachelor's	Yes	No
Mayor Salvatore Mancini Union Free Library	North Providence	34,114	Coordinator of Youth Services	1	Youth Services (Children & Teen)	\$ 31.17	Yes	\$ 56,733		35	MLS	Yes	No
Mayor Salvatore Mancini Union Free Library	North Providence	34,114	Assistant Coordinator of Youth Services	1	Youth Services (Children & Teen)	\$ 19.30	Yes	\$ 26,095		26	Bachelor's	Yes	No

Staff Positions by Library FY2024

Location	Municipality	Population	Position Title	No. of Staff	Job Category	Hourly Rate	Hourly Rate Calculated by OLIS	Annual Salary	Annual Salary Calculated by OLIS	Hours per Week	Degree Required	Supervisor?	Vacant?
Mayor Salvatore Mancini Union Free Library	North Providence	34,114	Children's Assistant	1	Youth Services (Children & Teen)	\$ 14.00	No			17	None	No	No
Mayor Salvatore Mancini Union Free Library	North Providence	34,114	Children's Assistant	1	Youth Services (Children & Teen)	\$ 14.00	No			15	None	No	No
Mayor Salvatore Mancini Union Free Library	North Providence	34,114	Children's Assistant	1	Youth Services (Children & Teen)	\$ 14.00	No			24	None	No	No
Mayor Salvatore Mancini Union Free Library	North Providence	34,114	Children's Program Specialist	1	Youth Services (Children & Teen)	\$ 18.00	No			22	Bachelor's	No	No
Mayor Salvatore Mancini Union Free Library	North Providence	34,114	Senior Children's Assistant	1	Youth Services (Children & Teen)	\$ 14.39	No			10	None	No	No
Mayor Salvatore Mancini Union Free Library	North Providence	34,114	Children's Assistant	1	Youth Services (Children & Teen)	\$ 14.00	No			15	None	No	No
North Smithfield Public Library	North Smithfield	12,588	Reference/Adult Services	1	Adult Services	\$ 25.91	Yes	\$ 47,156		35	MLS	Yes	No
North Smithfield Public Library	North Smithfield	12,588	Assistant Director	1	Assistant Director		N/A	\$ 10,000		0	MLS	Yes	No
North Smithfield Public Library	North Smithfield	12,588	Circulation	1	Borrower Services	\$ 15.61	No			20	HS Diploma	No	No
North Smithfield Public Library	North Smithfield	12,588	circulation	1	Borrower Services	\$ 16.10	No			19	HS Diploma	No	No
North Smithfield Public Library	North Smithfield	12,588	Circulation	1	Borrower Services	\$ 17.57	No			15	HS Diploma	No	No
North Smithfield Public Library	North Smithfield	12,588	Circulation	1	Borrower Services	\$ 16.52	No			6	HS Diploma	No	No
North Smithfield Public Library	North Smithfield	12,588	Circulation	1	Borrower Services	\$ 15.30	No			20	HS Diploma	No	No
North Smithfield Public Library	North Smithfield	12,588	Cataloging	1	Collection Management	\$ 24.00	No			30	HS Diploma	Yes	No
North Smithfield Public Library	North Smithfield	12,588	Director	1	Director	\$ 39.59	Yes	\$ 82,346	No	40	MLS	Yes	No
North Smithfield Public Library	North Smithfield	12,588	Youth Services	1	Youth Services (Children & Teen)	\$ 32.35	Yes	\$ 58,877		35	MLS	Yes	No
Pawtucket Public Library	Pawtucket	75,604	Library Secretary	1	Administrative Staff	\$ 26.35	Yes	\$ 54,809		40	None	No	No
Pawtucket Public Library	Pawtucket	75,604	Adult Services Coordinator	1	Adult Services	\$ 39.22	Yes	\$ 71,388		35	MLS	Yes	No
Pawtucket Public Library	Pawtucket	75,604	Adult Services Librarian	2	Adult Services	\$ 34.52	Yes	\$ 62,828		35	MLS	Yes	No
Pawtucket Public Library	Pawtucket	75,604	Adult Services Librarian PT	1	Adult Services	\$ 33.20	No			19	MLS	Yes	No
Pawtucket Public Library	Pawtucket	75,604	Adult Services Librarian PT	1	Adult Services	\$ 31.89	No			19	MLS	Yes	No
Pawtucket Public Library	Pawtucket	75,604	Library Assistant III	1	Adult Services	\$ 23.87	Yes	\$ 43,437		35	None	No	No
Pawtucket Public Library	Pawtucket	75,604	Library Aide	1	Adult Services	\$ 16.44	No			19	None	No	No
Pawtucket Public Library	Pawtucket	75,604	Assistant Director	1	Assistant Director	\$ 43.90	Yes	\$ 79,905		35	MLS	Yes	No
Pawtucket Public Library	Pawtucket	75,604	Bookmobile Operator and Clerk	2	Borrower Services	\$ 24.52	No			19	None	No	No
Pawtucket Public Library	Pawtucket	75,604	Circulation Services	1	Borrower Services	\$ 29.47	Yes	\$ 53,635		35	None	Yes	No
Pawtucket Public Library	Pawtucket	75,604	Library Assistant II Circ	2	Borrower Services	\$ 23.26	Yes	\$ 42,331		35	None	Yes	No
Pawtucket Public Library	Pawtucket	75,604	Library Assistant I Circ	1	Borrower Services	\$ 21.55	Yes	\$ 39,227		35	None	Yes	No
Pawtucket Public Library	Pawtucket	75,604	Library Assistant I Circ PT	1	Borrower Services	\$ 21.55	No			19	None	No	No
Pawtucket Public Library	Pawtucket	75,604	Library Aide	1	Borrower Services	\$ 16.44	No			19	None	No	No
Pawtucket Public Library	Pawtucket	75,604	Passprt Acceptance Agent	1	Borrower Services	\$ 22.22	No			24	Bachelor's	Yes	No
Pawtucket Public Library	Pawtucket	75,604	Children's Coordinator	1	Children's Services	\$ 39.22	Yes	\$ 71,388		35	MLS	Yes	No
Pawtucket Public Library	Pawtucket	75,604	Children's Librarian	1	Children's Services	\$ 34.52	Yes	\$ 62,828		35	MLS	Yes	No
Pawtucket Public Library	Pawtucket	75,604	Children's Librarian PT	2	Children's Services	\$ 34.52	No			19	MLS	Yes	No
Pawtucket Public Library	Pawtucket	75,604	Library Aide	1	Children's Services	\$ 15.41	No			19	None	No	No
Pawtucket Public Library	Pawtucket	75,604	Technical Services Coordinator	1	Collection Management	\$ 39.22	Yes	\$ 71,388		35	MLS	Yes	No
Pawtucket Public Library	Pawtucket	75,604	Technical Services Librarian	1	Collection Management	\$ 34.52	Yes	\$ 62,828		35	MLS	Yes	No
Pawtucket Public Library	Pawtucket	75,604	Library Assiatnt II Technical Services	1	Collection Management	\$ 22.72	Yes	\$ 41,358		35	None	Yes	No
Pawtucket Public Library	Pawtucket	75,604	Library Assitant I Technical Services	1	Collection Management	\$ 20.86	No			19	None	No	No
Pawtucket Public Library	Pawtucket	75,604	Library Director	1	Director	\$ 49.45	Yes	\$ 90,000	No	35	MLS	Yes	No
Pawtucket Public Library	Pawtucket	75,604	ESL Teacher	1	Educator	\$ 24.00	No			11	Bachelor's	No	No
Pawtucket Public Library	Pawtucket	75,604	Custodian	1	Facilities Maintenance	\$ 19.60	Yes	\$ 40,759		40	None	Yes	No
Pawtucket Public Library	Pawtucket	75,604	Bilingual Tech	1	Information Technology	\$ 24.52	Yes	\$ 44,631		35	Other	No	No
Pawtucket Public Library	Pawtucket	75,604	Teen Librarian	1	Teen Services	\$ 34.52	Yes	\$ 62,828		35	MLS	Yes	No
Portsmouth Free Public Library	Portsmouth	17,871	Office Manager	1	Administrative Staff	\$ 24.10	Yes	\$ 43,862		35	Bachelor's	No	No
Portsmouth Free Public Library	Portsmouth	17,871	Assistant Director/Reference	1	Assistant Director	\$ 32.03	No	\$ 58,295		35	MLS	Yes	No
Portsmouth Free Public Library	Portsmouth	17,871	Part time Library Assistant	8	Borrower Services	\$ 15.30	No			20	HS Diploma	No	No
Portsmouth Free Public Library	Portsmouth	17,871	Children's Librarian	1	Children's Services	\$ 24.73	Yes	\$ 45,009		35	MLS	Yes	No
Portsmouth Free Public Library	Portsmouth	17,871	Part time Technical Services Library Assistant	1	Collection Management	\$ 17.00	No			28	HS Diploma	No	No
Portsmouth Free Public Library	Portsmouth	17,871	Director	1	Director	\$ 40.97	Yes	\$ 74,564	No	35	MLS	Yes	No
Portsmouth Free Public Library	Portsmouth	17,871	Maintenance	1	Facilities Maintenance	\$ 16.88	No			9	HS Diploma	No	No
Portsmouth Free Public Library	Portsmouth	17,871	Part time Young Adult/Reference	1	Teen Services	\$ 27.11	No			21	MLS	No	No
Portsmouth Free Public Library	Portsmouth	17,871	Part time Young Adult/Reference Assistant	1	Teen Services	\$ 17.00	No			14	Bachelor's	No	No
Community Libraries of Providence	Providence	131,744	Communications and Marketing Manager	1	Administrative Staff	\$ 29.06	No	\$ 60,445		40	Bachelor's	No	No
Community Libraries of Providence	Providence	131,744	Director of Philanthropy	1	Administrative Staff	\$ 42.67	No	\$ 88,754		40	Other	Yes	No
Community Libraries of Providence	Providence	131,744	HR Manager	1	Administrative Staff	\$ 30.97	No	\$ 64,418		40	Other	No	No
Community Libraries of Providence	Providence	131,744	Library Supervisor	1	Administrative Staff	\$ 29.50	No	\$ 61,360		40	Master's	Yes	No
Community Libraries of Providence	Providence	131,744	Office Manager	1	Administrative Staff	\$ 31.16	No	\$ 64,813		40	Other	No	No
Community Libraries of Providence	Providence	131,744	Systems Coordinator	1	Administrative Staff	\$ 34.78	No	\$ 72,342		40	MLS	Yes	No
Community Libraries of Providence	Providence	131,744	Systems Coordinator	1	Administrative Staff	\$ 33.59	No	\$ 69,867		40	MLS	Yes	No
Community Libraries of Providence	Providence	131,744	Adult Services Librarian	1	Adult Services	\$ 31.00	No	\$ 60,450		37.5	MLS	No	No
Community Libraries of Providence	Providence	131,744	Adult Services Librarian	1	Adult Services	\$ 28.06	No	\$ 54,717		37.5	MLS	No	No
Community Libraries of Providence	Providence	131,744	Adult Services Librarian	1	Adult Services	\$ 25.06	No	\$ 48,867		37.5	MLS	No	No
Community Libraries of Providence	Providence	131,744	Entrepreneurship Specialist	1	Adult Services	\$ 26.00	No	\$ 50,700		37.5	Master's	No	No
Community Libraries of Providence	Providence	131,744	Latino Program Manager	1	Adult Services	\$ 27.29	No	\$ 53,216		37.5	Bachelor's	No	No
Community Libraries of Providence	Providence	131,744	Spanish Language Outreach Specialist	1	Adult Services	\$ 23.87	No	\$ 46,547		37.5	Bachelor's	No	No
Community Libraries of Providence	Providence	131,744	Lead Clerk	1	Borrower Services	\$ 22.70	No	\$ 44,265		37.5	HS Diploma	No	No
Community Libraries of Providence	Providence	131,744	Lead Clerk	1	Borrower Services	\$ 19.19	No	\$ 37,421		37.5	HS Diploma	No	No
Community Libraries of Providence	Providence	131,744	Lead Clerk	1	Borrower Services	\$ 18.44	No	\$ 35,958		37.5	HS Diploma	No	Yes
Community Libraries of Providence	Providence	131,744	Library Clerk	4	Borrower Services	\$ 19.53	No	\$ 38,084		37.5	HS Diploma	No	No
Community Libraries of Providence	Providence	131,744	Library Clerk	1	Borrower Services	\$ 19.01	No	\$ 37,070		37.5	HS Diploma	No	No
Community Libraries of Providence	Providence	131,744	Library Clerk	1	Borrower Services	\$ 17.77	No	\$ 34,652		37.5	HS Diploma	No	No

Staff Positions by Library FY2024

Location	Municipality	Population	Position Title	No. of Staff	Job Category	Hourly Rate	Hourly Rate Calculated by OLIS	Annual Salary	Annual Salary Calculated by OLIS	Hours per Week	Degree Required	Supervisor?	Vacant?
Community Libraries of Providence	Providence	131,744	Library Clerk	1	Borrower Services	\$ 16.59	No	\$ 32,351		37.5	HS Diploma	No	No
Community Libraries of Providence	Providence	131,744	Library Clerk	1	Borrower Services	\$ 16.59	No	\$ 17,254		20	HS Diploma	No	No
Community Libraries of Providence	Providence	131,744	Library Clerk	1	Borrower Services	\$ 16.54	No	\$ 32,253		37.5	HS Diploma	No	No
Community Libraries of Providence	Providence	131,744	Library Clerk	2	Borrower Services	\$ 16.35	No	\$ 31,883		37.5	HS Diploma	No	No
Community Libraries of Providence	Providence	131,744	Library Clerk	6	Borrower Services	\$ 16.00	No	\$ 31,200		37.5	HS Diploma	No	No
Community Libraries of Providence	Providence	131,744	Library Manager	1	Branch Manager	\$ 33.69	No	\$ 65,696		37.5	MLS	No	No
Community Libraries of Providence	Providence	131,744	Library Manager	1	Branch Manager	\$ 32.90	No	\$ 64,155		37.5	MLS	No	No
Community Libraries of Providence	Providence	131,744	Library Manager	1	Branch Manager	\$ 32.10	No	\$ 62,595		37.5	MLS	No	No
Community Libraries of Providence	Providence	131,744	Library Manager	1	Branch Manager	\$ 29.41	No	\$ 57,350		37.5	MLS	No	No
Community Libraries of Providence	Providence	131,744	Library Manager	1	Branch Manager	\$ 28.71	No	\$ 55,985		37.5	MLS	No	Yes
Community Libraries of Providence	Providence	131,744	Library Manager	1	Branch Manager	\$ 27.43	No	\$ 53,489		37.5	MLS	No	No
Community Libraries of Providence	Providence	131,744	Acquisitions Specialist	1	Collection Management	\$ 22.81	No	\$ 44,480		37.5	Bachelor's	No	No
Community Libraries of Providence	Providence	131,744	CMS Clerk	1	Collection Management	\$ 21.17	No	\$ 41,282		37.5	HS Diploma	No	No
Community Libraries of Providence	Providence	131,744	Digital Services Coordinator	1	Digital Services	\$ 33.64	No	\$ 70,387		40	Bachelor's	Yes	No
Community Libraries of Providence	Providence	131,744	Makerspace Program Coordinator	1	Digital Services	\$ 31.28	No	\$ 65,062		40	MLS	Yes	No
Community Libraries of Providence	Providence	131,744	Program Clerk	1	Digital Services	\$ 17.77	No	\$ 34,652		37.5	HS Diploma	No	No
Community Libraries of Providence	Providence	131,744	Program Clerk	1	Digital Services	\$ 17.37	No	\$ 33,872		37.5	HS Diploma	No	No
Community Libraries of Providence	Providence	131,744	Youth Makerspace Coach	1	Digital Services	\$ 21.96	No	\$ 42,822		37.5	Bachelor's	No	No
Community Libraries of Providence	Providence	131,744	Library Director	1	Director	\$ 55.29	No	\$ 115,003	No	40	MLS	Yes	No
Community Libraries of Providence	Providence	131,744	Branch Custodian	2	Facilities Maintenance	\$ 20.59	No	\$ 42,827		40	HS Diploma	No	No
Community Libraries of Providence	Providence	131,744	Branch Custodian	1	Facilities Maintenance	\$ 19.00	No	\$ 39,520		40	HS Diploma	No	No
Community Libraries of Providence	Providence	131,744	Head of Maintenance	1	Facilities Maintenance	\$ 33.66	No	\$ 70,013		40	Bachelor's	Yes	No
Community Libraries of Providence	Providence	131,744	Maintenance Tech	1	Facilities Maintenance	\$ 27.42	No	\$ 57,034		40	HS Diploma	No	No
Community Libraries of Providence	Providence	131,744	IT Manager	1	Information Technology	\$ 32.00	No	\$ 66,560		40	Bachelor's	No	No
Community Libraries of Providence	Providence	131,744	Teen & Adult Services Librarian	1	Teen Services	\$ 26.79	No	\$ 52,241		37.5	MLS	No	No
Community Libraries of Providence	Providence	131,744	Teen & Adult Services Librarian	2	Teen Services	\$ 23.30	No	\$ 45,435		37.5	MLS	No	No
Community Libraries of Providence	Providence	131,744	Youth Services Coordinator	1	Youth Services (Children & Teen)	\$ 35.08	No	\$ 72,966		40	MLS	Yes	No
Community Libraries of Providence	Providence	131,744	Youth Services Librarian	2	Youth Services (Children & Teen)	\$ 28.06	No	\$ 54,717		37.5	MLS	No	No
Community Libraries of Providence	Providence	131,744	Youth Services Librarian	1	Youth Services (Children & Teen)	\$ 26.79	No	\$ 52,241		37.5	MLS	No	No
Community Libraries of Providence	Providence	131,744	Youth Services Librarian	1	Youth Services (Children & Teen)	\$ 25.66	No	\$ 50,037		37.5	MLS	No	No
Community Libraries of Providence	Providence	131,744	Youth Services Librarian	1	Youth Services (Children & Teen)	\$ 23.30	No	\$ 45,435		37.5	MLS	No	Yes
Community Libraries of Providence	Providence	131,744	Youth Services Librarian	3	Youth Services (Children & Teen)	\$ 23.30	No	\$ 45,435		37.5	MLS	No	No
Community Libraries of Providence	Providence	131,744	Youth Services Specialist	2	Youth Services (Children & Teen)	\$ 27.89	No	\$ 54,386		37.5	Bachelor's	No	No
Community Libraries of Providence	Providence	131,744	Youth Services Specialist	1	Youth Services (Children & Teen)	\$ 27.29	No	\$ 53,216		37.5	Bachelor's	No	No
Community Libraries of Providence	Providence	131,744	Youth Services Specialist	1	Youth Services (Children & Teen)	\$ 24.44	No	\$ 47,658		37.5	Bachelor's	No	No
Providence Public Library	Providence	59,190	Administrative Staff	1	Administrative Staff	\$ 19.23	Yes	\$ 20,001		20	Other	No	Yes
Providence Public Library	Providence	59,190	Bilingual Registrar	1	Administrative Staff	\$ 23.93	Yes	\$ 43,551		35	HS Diploma	No	No
Providence Public Library	Providence	59,190	Chief of Staff	1	Administrative Staff	\$ 39.87	Yes	\$ 72,564		35	Other	No	No
Providence Public Library	Providence	59,190	Comm. Engagement & Stewardship Manager	1	Administrative Staff	\$ 34.98	Yes	\$ 63,656		35	Bachelor's	No	Yes
Providence Public Library	Providence	59,190	Community Partnerships Facilitator	1	Administrative Staff	\$ 26.01	Yes	\$ 47,338		35	Bachelor's	No	No
Providence Public Library	Providence	59,190	Controller	1	Administrative Staff	\$ 43.88	Yes	\$ 79,866		35	Bachelor's	Yes	No
Providence Public Library	Providence	59,190	Database Coordinator	1	Administrative Staff	\$ 24.83	Yes	\$ 45,184		35	HS Diploma	No	No
Providence Public Library	Providence	59,190	Digital Content Creator	1	Administrative Staff	\$ 25.23	Yes	\$ 45,922		35	HS Diploma	No	No
Providence Public Library	Providence	59,190	Director of External Affairs	1	Administrative Staff	\$ 55.49	Yes	\$ 100,989		35	Bachelor's	Yes	No
Providence Public Library	Providence	59,190	Director of Marketing	1	Administrative Staff	\$ 46.93	Yes	\$ 85,421		35	Bachelor's	Yes	No
Providence Public Library	Providence	59,190	Director of Programs and Exhibitions	1	Administrative Staff	\$ 48.22	Yes	\$ 87,752		35	Bachelor's	Yes	No
Providence Public Library	Providence	59,190	Director of Tech & Information Services	1	Administrative Staff	\$ 56.42	Yes	\$ 102,681		35	MLS	Yes	No
Providence Public Library	Providence	59,190	Events Coordinator	1	Administrative Staff	\$ 24.48	Yes	\$ 44,553		35	HS Diploma	No	No
Providence Public Library	Providence	59,190	Grants Manager	1	Administrative Staff	\$ 39.23	Yes	\$ 71,400		35	Bachelor's	No	No
Providence Public Library	Providence	59,190	HR Manager	1	Administrative Staff	\$ 41.03	Yes	\$ 74,680		35	Other	Yes	No
Providence Public Library	Providence	59,190	Philanthropic Engagement Manager	1	Administrative Staff	\$ 39.23	Yes	\$ 71,399		35	Bachelor's	No	No
Providence Public Library	Providence	59,190	Staff Accountant	1	Administrative Staff	\$ 30.82	Yes	\$ 56,099		35	HS Diploma	No	No
Providence Public Library	Providence	59,190	Director of External Affairs	1	Administrative Staff	\$ 62.57	Yes	\$ 113,879		35	Master's	Yes	No
Providence Public Library	Providence	59,190	Philanthropic Engagement Manager	1	Administrative Staff	\$ 42.82	Yes	\$ 77,926		35	Bachelor's	No	No
Providence Public Library	Providence	59,190	Bilingual Learning Facilitator	1	Adult Services	\$ 24.33	Yes	\$ 44,275		35	HS Diploma	No	No
Providence Public Library	Providence	59,190	Digital Equity & Learning Coordinator	1	Adult Services	\$ 33.62	Yes	\$ 61,192		35	Bachelor's	Yes	No
Providence Public Library	Providence	59,190	Head of Adult Services	1	Adult Services	\$ 39.54	Yes	\$ 71,954		35	Bachelor's	Yes	No
Providence Public Library	Providence	59,190	Head of Info Services	1	Adult Services	\$ 40.86	Yes	\$ 74,369		35	MLS	Yes	Yes
Providence Public Library	Providence	59,190	Chief Operating Officer	1	Assistant Director	\$ 64.28	Yes	\$ 116,997		35	Master's	Yes	No
Providence Public Library	Providence	59,190	Acquisitions/Catalog Librarian	1	Borrower Services	\$ 32.80	Yes	\$ 59,688		35	MLS	No	No
Providence Public Library	Providence	59,190	Information Services Librarian	1	Borrower Services	\$ 29.13	Yes	\$ 53,018		35	MLS	No	No
Providence Public Library	Providence	59,190	Information Services Librarian	1	Borrower Services	\$ 28.02	Yes	\$ 51,000		35	MLS	No	No
Providence Public Library	Providence	59,190	Information Services Librarian	1	Borrower Services	\$ 28.02	Yes	\$ 51,000		35	MLS	No	No
Providence Public Library	Providence	59,190	Information Services Librarian	1	Borrower Services	\$ 28.02	Yes	\$ 29,142		20	MLS	No	No
Providence Public Library	Providence	59,190	Information Services Librarian	1	Borrower Services	\$ 28.02	Yes	\$ 50,995		35	MLS	No	No
Providence Public Library	Providence	59,190	Information Services Specialists	1	Borrower Services	\$ 18.36	Yes	\$ 17,184		18	HS Diploma	No	No
Providence Public Library	Providence	59,190	Information Services Specialists	1	Borrower Services	\$ 24.67	Yes	\$ 44,899		35	HS Diploma	No	No
Providence Public Library	Providence	59,190	Information Services Specialists	1	Borrower Services	\$ 18.36	Yes	\$ 33,415		35	HS Diploma	No	No
Providence Public Library	Providence	59,190	Information Services Specialists	1	Borrower Services	\$ 18.73	Yes	\$ 34,083		35	HS Diploma	No	No
Providence Public Library	Providence	59,190	Information Services Specialists	1	Borrower Services	\$ 23.49	Yes	\$ 42,752		35	HS Diploma	No	No
Providence Public Library	Providence	59,190	Reading Room Attendant	1	Borrower Services	\$ 20.81	Yes	\$ 21,640		20	HS Diploma	No	No
Providence Public Library	Providence	59,190	Senior Information Services Librarian	1	Borrower Services	\$ 43.56	Yes	\$ 79,281		35	MLS	Yes	No
Providence Public Library	Providence	59,190	Senior Information Services Specialist	1	Borrower Services	\$ 27.90	Yes	\$ 50,783		35	HS Diploma	Yes	No

Staff Positions by Library FY2024

Location	Municipality	Population	Position Title	No. of Staff	Job Category	Hourly Rate	Hourly Rate Calculated by OLIS	Annual Salary	Annual Salary Calculated by OLIS	Hours per Week	Degree Required	Supervisor?	Vacant?
Providence Public Library	Providence	59,190	Information Services Specialist	1	Borrower Services	\$ 18.36	Yes	\$ 17,184		18	HS Diploma	No	No
Providence Public Library	Providence	59,190	Early Childhood and Children's Educator	1	Children's Services	\$ 38.84	Yes	\$ 70,696		35	Master's	No	No
Providence Public Library	Providence	59,190	Senior Children's Librarian	1	Children's Services	\$ 41.71	Yes	\$ 75,917		35	MLS	No	No
Providence Public Library	Providence	59,190	Curator of RI Collections	1	Collection Management	\$ 40.82	Yes	\$ 74,296		35	MLS	No	No
Providence Public Library	Providence	59,190	Digital Projects Technician	1	Collection Management	\$ 28.05	Yes	\$ 51,051		35	HS Diploma	No	No
Providence Public Library	Providence	59,190	Director of Special Collections	1	Collection Management	\$ 45.51	Yes	\$ 82,833		35	MLS	Yes	No
Providence Public Library	Providence	59,190	Head of Acquisitions and Cataloging	1	Collection Management	\$ 36.01	Yes	\$ 65,544		35	MLS	Yes	No
Providence Public Library	Providence	59,190	Information Services Tech Support Specialist	1	Digital Services	\$ 21.83	Yes	\$ 39,726		35	HS Diploma	No	No
Providence Public Library	Providence	59,190	Maker Education Manager	1	Digital Services	\$ 33.63	Yes	\$ 61,199		35	Bachelor's	Yes	No
Providence Public Library	Providence	59,190	Workshop Coordinator	1	Digital Services	\$ 24.82	Yes	\$ 28,390		22	HS Diploma	No	No
Providence Public Library	Providence	59,190	Workshop Coordinator	1	Digital Services	\$ 30.30	Yes	\$ 55,139		35	Bachelor's	No	No
Providence Public Library	Providence	59,190	Director	1	Director	\$ 85.08	Yes	\$ 154,844	No	35	MLS	Yes	No
Providence Public Library	Providence	59,190	Innovations Project Coordinator	1	Educator	\$ 50.00	Yes	\$ 26,000		10	Bachelor's	No	No
Providence Public Library	Providence	59,190	Language Pathways Coordinator	1	Educator	\$ 36.15	Yes	\$ 65,800		35	Master's	Yes	No
Providence Public Library	Providence	59,190	Lead Adult Education Teacher	1	Educator	\$ 23.80	Yes	\$ 6,189		5	Bachelor's	No	No
Providence Public Library	Providence	59,190	Lead Adult Education Teacher	1	Educator	\$ 27.32	Yes	\$ 26,993		19	Bachelor's	No	No
Providence Public Library	Providence	59,190	Lead Adult Education Teacher	1	Educator	\$ 25.39	Yes	\$ 39,616		30	Bachelor's	No	No
Providence Public Library	Providence	59,190	Lead Adult Education Teacher	1	Educator	\$ 27.20	Yes	\$ 49,501		35	Bachelor's	No	No
Providence Public Library	Providence	59,190	Lead Technology Teacher	1	Educator	\$ 27.59	Yes	\$ 50,216		35	Bachelor's	No	No
Providence Public Library	Providence	59,190	Professional Learning Pathways Coordinator	1	Educator	\$ 35.19	Yes	\$ 64,045		35	Bachelor's	Yes	No
Providence Public Library	Providence	59,190	Lead ESOL Teacher	1	Educator	\$ 22.44	Yes	\$ 4,667		4	Bachelor's	No	No
Providence Public Library	Providence	59,190	Lead ESOL Teacher	1	Educator	\$ 24.35	Yes	\$ 44,308		35	Bachelor's	No	No
Providence Public Library	Providence	59,190	Technology Integration Specialist	1	Educator	\$ 29.58	Yes	\$ 46,144		30	Bachelor's	No	No
Providence Public Library	Providence	59,190	Technology Pathways Coordinator	1	Educator	\$ 34.30	Yes	\$ 62,424		35	Bachelor's	Yes	No
Providence Public Library	Providence	59,190	Director of Facilities	1	Facilities Maintenance	\$ 48.10	Yes	\$ 87,544		35	HS Diploma	Yes	No
Providence Public Library	Providence	59,190	Lead Security Officer	1	Facilities Maintenance	\$ 23.93	Yes	\$ 43,551		35	HS Diploma	No	No
Providence Public Library	Providence	59,190	Maintenance Assistant	1	Facilities Maintenance	\$ 37.94	Yes	\$ 69,042		35	Other	No	No
Providence Public Library	Providence	59,190	Maintenance Assistant	1	Facilities Maintenance	\$ 28.79	Yes	\$ 52,402		35	Other	No	No
Providence Public Library	Providence	59,190	Maintenance Assistant	1	Facilities Maintenance	\$ 28.79	Yes	\$ 11,977		8	Other	No	No
Providence Public Library	Providence	59,190	Security Officer	1	Facilities Maintenance	\$ 20.40	Yes	\$ 37,128		35	HS Diploma	No	No
Providence Public Library	Providence	59,190	Security Officer	1	Facilities Maintenance	\$ 17.34	Yes	\$ 18,033		20	HS Diploma	No	No
Providence Public Library	Providence	59,190	Digital Projects Librarian	1	Information Technology	\$ 32.55	Yes	\$ 59,245		35	MLS	No	No
Providence Public Library	Providence	59,190	Technology Support Coordinator	1	Information Technology	\$ 30.83	Yes	\$ 56,102		35	Bachelor's	No	No
Providence Public Library	Providence	59,190	Stack Clerk	1	Page	\$ 18.87	Yes	\$ 34,335		35	HS Diploma	No	No
Providence Public Library	Providence	59,190	Head of Youth Services	1	Teen Services	\$ 39.42	Yes	\$ 71,737		35	Master's	Yes	No
Providence Public Library	Providence	59,190	Teen Educator	1	Teen Services	\$ 29.14	Yes	\$ 53,037		35	Bachelor's	No	No
Providence Public Library	Providence	59,190	Teen Librarian	1	Teen Services	\$ 31.51	Yes	\$ 57,346		35	MLS	No	No
Providence Public Library	Providence	59,190	Youth Services Specialist	1	Teen Services	\$ 18.73	Yes	\$ 34,083		35	HS Diploma	No	No
Providence Public Library	Providence	59,190	Youth Education	1	Teen Services	\$ 31.45	Yes	\$ 57,238		35	MLS	No	No
Clark Memorial Library	Richmond	8,020	Bookkeeper	1	Administrative Staff	\$ 21.01	No			2	Bachelor's	No	No
Clark Memorial Library	Richmond	8,020	Librarian	1	Adult Services	\$ 16.39	No			7	MLS	Yes	No
Clark Memorial Library	Richmond	8,020	Assistant Director	1	Assistant Director	\$ 23.17	No			6	Bachelor's	Yes	No
Clark Memorial Library	Richmond	8,020	Library Assistant	1	Borrower Services	\$ 18.55	No			16	Bachelor's	Yes	No
Clark Memorial Library	Richmond	8,020	Library Assistant	1	Borrower Services	\$ 16.00	No			4	Bachelor's	No	No
Clark Memorial Library	Richmond	8,020	Children's Program Director	1	Children's Services	\$ 17.34	No			19	Bachelor's	No	No
Clark Memorial Library	Richmond	8,020	Director	1	Director	\$ 30.87	Yes	\$ 40,131	No	25	MLS	Yes	No
Clark Memorial Library	Richmond	8,020	Library Assistant	1	Page	\$ 15.00	No			8	HS Diploma	No	No
Hope Library	Scituate	4,230	Assistant Director	1	Assistant Director	\$ 22.50	No			35	Bachelor's	Yes	No
Hope Library	Scituate	4,230	Circulation Technician 1	1	Borrower Services	\$ 14.50	No			10	HS Diploma	No	No
Hope Library	Scituate	4,230	Circulation Technician 2	1	Borrower Services	\$ 15.00	No			9	HS Diploma	No	No
Hope Library	Scituate	4,230	Circulation Technician 3	1	Borrower Services	\$ 15.00	No			7	HS Diploma	No	No
Hope Library	Scituate	4,230	Collections Manager	1	Collection Management	\$ 18.50	No			35	Bachelor's	No	No
Hope Library	Scituate	4,230	Executive Director	1	Director	\$ 26.00	Yes	\$ 54,080	No	40	MLS	Yes	No
Hope Library	Scituate	4,230	Janitor	1	Facilities Maintenance	\$ 14.00	No			12	HS Diploma	No	No
Hope Library	Scituate	4,230	Library Page	1	Page	\$ 14.00	No			8	None	No	No
Hope Library	Scituate	4,230	Children's Librarian	1	Youth Services (Children & Teen)	\$ 18.50	No			25	MLS	No	No
Hope Library	Scituate	4,230	Youth Services Staff	1	Youth Services (Children & Teen)	\$ 18.00	No			22	Bachelor's	No	No
North Scituate Public Library	Scituate	6,154	Administrative Assistant	1	Administrative Staff	\$ 16.50	No			3	HS Diploma	No	No
North Scituate Public Library	Scituate	6,154	Project Assistant	1	Administrative Staff	\$ 17.75	No			10	HS Diploma	No	No
North Scituate Public Library	Scituate	6,154	Reference Librarian	1	Adult Services	\$ 18.50	No			30.5	MLS	Yes	No
North Scituate Public Library	Scituate	6,154	Reference Librarian	1	Adult Services	\$ 22.75	No			6.5	MLS	No	No
North Scituate Public Library	Scituate	6,154	Circulation Supervisor	1	Borrower Services	\$ 22.50	No			34	HS Diploma	Yes	No
North Scituate Public Library	Scituate	6,154	Circulation Assistant	1	Borrower Services	\$ 14.00	No			14	HS Diploma	No	No
North Scituate Public Library	Scituate	6,154	Circulation Assistant	1	Borrower Services	\$ 14.50	No			7	HS Diploma	No	No
North Scituate Public Library	Scituate	6,154	Circulation Assistant	2	Borrower Services	\$ 14.00	No			9	HS Diploma	No	No
North Scituate Public Library	Scituate	6,154	Circulation Assistant	1	Borrower Services	\$ 14.00	No			6	HS Diploma	No	No
North Scituate Public Library	Scituate	6,154	Circulation Assistant	1	Borrower Services	\$ 14.50	No			19.5	HS Diploma	No	No
North Scituate Public Library	Scituate	6,154	Circulation Assistant	1	Borrower Services	\$ 14.50	No			9.5	HS Diploma	No	No
North Scituate Public Library	Scituate	6,154	Circulation Assistant	1	Borrower Services	\$ 15.00	No			22.5	HS Diploma	No	No
North Scituate Public Library	Scituate	6,154	Circulation Assistant	1	Borrower Services	\$ 14.75	No			13	HS Diploma	No	No
North Scituate Public Library	Scituate	6,154	Circulation Assistant	1	Borrower Services	\$ 14.00	No			10.5	HS Diploma	No	No
North Scituate Public Library	Scituate	6,154	Director	1	Director	\$ 39.01	Yes	\$ 71,000	No	35	MLS	Yes	No

Staff Positions by Library FY2024

Location	Municipality	Population	Position Title	No. of Staff	Job Category	Hourly Rate	Hourly Rate Calculated by OLIS	Annual Salary	Annual Salary Calculated by OLIS	Hours per Week	Degree Required	Supervisor?	Vacant?
North Scituate Public Library	Scituate	6,154	Youth Services Librarian	1	Youth Services (Children & Teen)	\$ 20.00	No			30	MLS	Yes	No
East Smithfield Public Library	Smithfield	9,476	Office Manager	1	Administrative Staff	\$ 34.07	No			40	HS Diploma	No	Yes
East Smithfield Public Library	Smithfield	9,476	Head of Access Services	1	Borrower Services	\$ 31.50	No			35	Bachelor's	Yes	No
East Smithfield Public Library	Smithfield	9,476	Library Associate	1	Borrower Services	\$ 15.00	No			19.5	HS Diploma	No	No
East Smithfield Public Library	Smithfield	9,476	Library Associate	1	Borrower Services	\$ 20.04	No			30	HS Diploma	No	No
East Smithfield Public Library	Smithfield	9,476	Library Associate	1	Borrower Services	\$ 15.00	No			14	HS Diploma	No	No
East Smithfield Public Library	Smithfield	9,476	Library Technician	1	Borrower Services	\$ 15.89	No			26.5	HS Diploma	No	No
East Smithfield Public Library	Smithfield	9,476	Library Technician	1	Borrower Services	\$ 14.67	No			31	HS Diploma	No	No
East Smithfield Public Library	Smithfield	9,476	Head of Youth Services	1	Children's Services	\$ 29.40	No			35	MLS	Yes	No
East Smithfield Public Library	Smithfield	9,476	Acquisitions and Cataloging Librarian	1	Collection Management	\$ 25.82	No			35	MLS	No	No
East Smithfield Public Library	Smithfield	9,476	Director	1	Director	\$ 37.00	Yes	\$ 76,960	No	40	MLS	Yes	No
East Smithfield Public Library	Smithfield	9,476	Head of Facilities	1	Facilities Maintenance	\$ 17.82	No			15	HS Diploma	No	No
East Smithfield Public Library	Smithfield	9,476	Makerspace Librarian	1	Information Technology	\$ 21.18	No			15	MLS	No	No
East Smithfield Public Library	Smithfield	9,476	Makerspace Associate	1	Information Technology	\$ 16.00	No			8	HS Diploma	No	No
East Smithfield Public Library	Smithfield	9,476	Library Aide	1	Page	\$ 14.15	No			12.5	HS Diploma	No	No
East Smithfield Public Library	Smithfield	9,476	Library Aide	1	Page	\$ 14.00	No			3	HS Diploma	No	No
East Smithfield Public Library	Smithfield	9,476	Library Aide	1	Page	\$ 14.50	No			17.5	HS Diploma	No	No
East Smithfield Public Library	Smithfield	9,476	Library Aide	1	Page	\$ 14.48	No			16.75	HS Diploma	No	No
East Smithfield Public Library	Smithfield	9,476	Teen Library Associate	1	Youth Services (Children & Teen)	\$ 15.00	No			15	HS Diploma	No	Yes
Greenville Public Library	Smithfield	12,642	Secretary	1	Administrative Staff	\$ 18.53	No			8	Bachelor's	No	No
Greenville Public Library	Smithfield	12,642	Reference Librarian/Technical Services	1	Adult Services	\$ 29.15	No			35	MLS	Yes	No
Greenville Public Library	Smithfield	12,642	Reference Librarian	1	Adult Services	\$ 32.95	No			4	MLS	No	No
Greenville Public Library	Smithfield	12,642	Assistant Director	1	Assistant Director	\$ 41.65	No			35	MLS	Yes	No
Greenville Public Library	Smithfield	12,642	Circulation Assistant	1	Borrower Services	\$ 19.44	No			35	Bachelor's	No	No
Greenville Public Library	Smithfield	12,642	Circulation Assistant	1	Borrower Services	\$ 15.84	No			20	Bachelor's	No	No
Greenville Public Library	Smithfield	12,642	Circulation Assistant	1	Borrower Services	\$ 16.23	No			16	Bachelor's	No	No
Greenville Public Library	Smithfield	12,642	Circulation Assistant	1	Borrower Services	\$ 14.25	No			10	Bachelor's	No	No
Greenville Public Library	Smithfield	12,642	Circulation Assistant	1	Borrower Services	\$ 17.20	No			10	HS Diploma	No	No
Greenville Public Library	Smithfield	12,642	Children's Supervisor	1	Children's Services	\$ 35.81	No			35	MLS	Yes	No
Greenville Public Library	Smithfield	12,642	Children's Librarian	1	Children's Services	\$ 26.69	No			26	MLS	No	No
Greenville Public Library	Smithfield	12,642	Children's Assistant	1	Children's Services	\$ 20.55	No			15	Bachelor's	No	No
Greenville Public Library	Smithfield	12,642	Reference Assistant	1	Digital Services	\$ 20.55	No			25	Bachelor's	No	No
Greenville Public Library	Smithfield	12,642	Library Director	1	Director	\$ 46.63	No	\$ 84,867	Yes	35	MLS	Yes	No
Greenville Public Library	Smithfield	12,642	Technology Coordinator/Circulation Supervisor	1	Information Technology	\$ 33.50	No			35	Bachelor's	Yes	No
Greenville Public Library	Smithfield	12,642	Page	1	Page	\$ 14.00	No			10	None	No	No
Greenville Public Library	Smithfield	12,642	Page	1	Page	\$ 14.00	No			10	None	No	No
Greenville Public Library	Smithfield	12,642	Page	1	Page	\$ 14.00	No			10	None	No	No
Greenville Public Library	Smithfield	12,642	Young Adult Librarian	1	Teen Services	\$ 29.15	No			35	MLS	Yes	No
South Kingstown Public Library	South Kingstown	31,931	Central Services Librarian	1	Adult Services	\$ 39.32	Yes	\$ 71,570		35	MLS	Yes	No
South Kingstown Public Library	South Kingstown	31,931	Programming and Outreach Librarian	1	Adult Services	\$ 28.80	Yes	\$ 52,415		35	MLS	Yes	No
South Kingstown Public Library	South Kingstown	31,931	Reference and Program Librarian	1	Adult Services	\$ 28.80	Yes	\$ 52,415		35	MLS	Yes	No
South Kingstown Public Library	South Kingstown	31,931	Reference Librarian	1	Adult Services	\$ 27.24	Yes	\$ 49,583		35	MLS	Yes	No
South Kingstown Public Library	South Kingstown	31,931	Circulation Supervisor	1	Borrower Services	\$ 29.58	Yes	\$ 53,831		35	Bachelor's	Yes	No
South Kingstown Public Library	South Kingstown	31,931	Library Technical Assistant	2	Borrower Services	\$ 21.74	No			21	HS Diploma	No	No
South Kingstown Public Library	South Kingstown	31,931	Library Assistant	2	Borrower Services	\$ 14.28	No			19	HS Diploma	No	No
South Kingstown Public Library	South Kingstown	31,931	Library Assistant	2	Borrower Services	\$ 14.28	No			18	HS Diploma	No	No
South Kingstown Public Library	South Kingstown	31,931	Library Assistant	2	Borrower Services	\$ 14.28	No			16	HS Diploma	No	No
South Kingstown Public Library	South Kingstown	31,931	Library Assistant	1	Borrower Services	\$ 14.28	No			14.5	HS Diploma	No	No
South Kingstown Public Library	South Kingstown	31,931	Library Assistant	1	Borrower Services	\$ 14.28	No			8	HS Diploma	No	No
South Kingstown Public Library	South Kingstown	31,931	Library Assistant	1	Borrower Services	\$ 14.28	No			19	HS Diploma	No	Yes
South Kingstown Public Library	South Kingstown	31,931	Branch Librarian	1	Branch Manager	\$ 34.25	Yes	\$ 62,331		35	MLS	Yes	No
South Kingstown Public Library	South Kingstown	31,931	Library Technical Assistant	1	Collection Management	\$ 24.67	No			13	Other	No	No
South Kingstown Public Library	South Kingstown	31,931	Library Director	1	Director	\$ 51.99	Yes	\$ 94,628	No	35	MLS	Yes	No
South Kingstown Public Library	South Kingstown	31,931	Digital Services & Administrative Librarian	1	Information Technology	\$ 29.58	Yes	\$ 53,831		35	MLS	Yes	No
South Kingstown Public Library	South Kingstown	31,931	Library Aide	1	Page	\$ 14.28	No			11.5	None	No	No
South Kingstown Public Library	South Kingstown	31,931	Library Aide	1	Page	\$ 14.28	No			3	None	No	Yes
South Kingstown Public Library	South Kingstown	31,931	Youth Services Librarian	2	Youth Services (Children & Teen)	\$ 31.13	Yes	\$ 56,664		35	MLS	Yes	No
South Kingstown Public Library	South Kingstown	31,931	Youth Services Librarian	1	Youth Services (Children & Teen)	\$ 30.36	Yes	\$ 55,250		35	MLS	Yes	No
Tiverton Public Library	Tiverton	16,359	Office Administrator	1	Administrative Staff	\$ 23.74	No			15	Bachelor's	No	No
Tiverton Public Library	Tiverton	16,359	Adult Services and Outreach Librarian	1	Adult Services	\$ 28.15	No			35	MLS	No	No
Tiverton Public Library	Tiverton	16,359	Library Assistant	1	Borrower Services	\$ 18.73	No			19	HS Diploma	No	No
Tiverton Public Library	Tiverton	16,359	Library Assistant	1	Borrower Services	\$ 16.98	No			19	HS Diploma	No	No
Tiverton Public Library	Tiverton	16,359	On-Call Library Assistant	1	Borrower Services	\$ 16.00	No			19	HS Diploma	No	No
Tiverton Public Library	Tiverton	16,359	Head of Branch and Patron Services	1	Branch Manager	\$ 24.29	No			35	Bachelor's	No	No
Tiverton Public Library	Tiverton	16,359	Head of Children's Services	1	Children's Services	\$ 27.59	No			35	Bachelor's	No	No
Tiverton Public Library	Tiverton	16,359	Children's Library Assistant	1	Children's Services	\$ 16.65	No			19	HS Diploma	No	No
Tiverton Public Library	Tiverton	16,359	Children's Library Assistant	1	Children's Services	\$ 16.00	No			19	HS Diploma	No	Yes
Tiverton Public Library	Tiverton	16,359	Reference and Acquisitions Librarian	1	Collection Management	\$ 26.50	No			19	MLS	No	No
Tiverton Public Library	Tiverton	16,359	Library Director	1	Director	\$ 43.06	Yes	\$ 78,369	No	35	MLS	Yes	No
Tiverton Public Library	Tiverton	16,359	Custodian	1	Facilities Maintenance	\$ 18.50	No			15	HS Diploma	No	No
Tiverton Public Library	Tiverton	16,359	Technology Coordinator	1	Information Technology	\$ 26.53	No			35	Bachelor's	No	No
Tiverton Public Library	Tiverton	16,359	Library Page	2	Page	\$ 14.00	No			9	None	No	Yes

Staff Positions by Library FY2024

Location	Municipality	Population	Position Title	No. of Staff	Job Category	Hourly Rate	Hourly Rate Calculated by OLIS	Annual Salary	Annual Salary Calculated by OLIS	Hours per Week	Degree Required	Supervisor?	Vacant?
Tiverton Public Library	Tiverton	16,359	Library Page	1	Page	\$ 14.00	No			9	None	No	No
Tiverton Public Library	Tiverton	16,359	Young Adult Services Librarian	1	Teen Services	\$ 26.53	No			35	MLS	No	No
George Hall Free Library	Warren	11,147	Head of Adult Services	1	Adult Services	\$ 28.00	No			28	MLS	No	No
George Hall Free Library	Warren	11,147	Assistant Librarian	1	Borrower Services	\$ 14.50	No			15	None	No	No
George Hall Free Library	Warren	11,147	Assistant Librarian	1	Borrower Services	\$ 14.50	No			12	None	No	No
George Hall Free Library	Warren	11,147	Assistant Librarian	1	Borrower Services	\$ 14.50	No			8	None	No	No
George Hall Free Library	Warren	11,147	Assistant Librarian	1	Borrower Services	\$ 16.47	No			16	None	No	No
George Hall Free Library	Warren	11,147	Assistant Librarian	1	Borrower Services	\$ 14.85	No			5	None	No	No
George Hall Free Library	Warren	11,147	Storytime Librarian	1	Children's Services	\$ 20.40	No			18	None	No	No
George Hall Free Library	Warren	11,147	Assistant Children's Librarian	1	Children's Services	\$ 14.50	No			10	None	No	No
George Hall Free Library	Warren	11,147	Cataloger	1	Collection Management	\$ 14.85	No			17	None	No	No
George Hall Free Library	Warren	11,147	Cataloger	1	Collection Management	\$ 15.50	No			12	None	No	No
George Hall Free Library	Warren	11,147	Director	1	Director	\$ 36.13	No	\$ 65,757	Yes	35	MLS	Yes	No
George Hall Free Library	Warren	11,147	Custodian	1	Facilities Maintenance	\$ 20.00	No			6	None	No	No
George Hall Free Library	Warren	11,147	Head of Youth Services	1	Youth Services (Children & Teen)	\$ 30.00	No			35	MLS	Yes	No
Pontiac Free Library	Warwick	9,631	Circulation Manager	1	Borrower Services	\$ 19.00	No			20	HS Diploma	Yes	No
Pontiac Free Library	Warwick	9,631	Circulation Assistant	1	Borrower Services	\$ 17.00	No			19	HS Diploma	No	No
Pontiac Free Library	Warwick	9,631	Circulation Assistant	1	Borrower Services	\$ 15.25	No			6	HS Diploma	No	No
Pontiac Free Library	Warwick	9,631	Circulation Assistant	1	Borrower Services	\$ 15.00	No			6	HS Diploma	No	No
Pontiac Free Library	Warwick	9,631	Library Director	2	Director	\$ 29.00	No	\$ 13,195	Yes	8.75	MLS	Yes	No
Warwick Public Library	Warwick	73,192	Administrative Assistant	1	Administrative Staff	\$ 31.27	No			35	Other	No	No
Warwick Public Library	Warwick	73,192	Coordinator of Adult Services	1	Adult Services	\$ 36.29	No			37.5	MLS	Yes	No
Warwick Public Library	Warwick	73,192	Community Services Librarian	1	Adult Services	\$ 40.01	No			37.5	MLS	Yes	No
Warwick Public Library	Warwick	73,192	Reference Librarian	1	Adult Services	\$ 34.52	No			37.5	MLS	No	No
Warwick Public Library	Warwick	73,192	Reference Librarian	1	Adult Services	\$ 32.33	No			37.5	MLS	No	No
Warwick Public Library	Warwick	73,192	Reference Librarian	1	Adult Services	\$ 26.61	No			37.5	MLS	No	No
Warwick Public Library	Warwick	73,192	Reference Librarian	1	Adult Services	\$ 28.60	No			19	MLS	No	No
Warwick Public Library	Warwick	73,192	Reference Librarian	1	Adult Services	\$ 27.93	No			19	MLS	No	No
Warwick Public Library	Warwick	73,192	Library Aide - Reference	2	Adult Services	\$ 22.11	No			19	HS Diploma	No	No
Warwick Public Library	Warwick	73,192	Deputy Director	1	Assistant Director	\$ 63.41	No			37.5	MLS	Yes	No
Warwick Public Library	Warwick	73,192	Circulation Supervisor	1	Borrower Services	\$ 29.83	No			35	Other	Yes	No
Warwick Public Library	Warwick	73,192	Library Aide - Circulation	2	Borrower Services	\$ 26.94	No			35	HS Diploma	No	No
Warwick Public Library	Warwick	73,192	Library Aide - Circulation	1	Borrower Services	\$ 26.33	No			35	HS Diploma	No	No
Warwick Public Library	Warwick	73,192	Library Aide - Circulation	1	Borrower Services	\$ 25.85	No			35	HS Diploma	No	No
Warwick Public Library	Warwick	73,192	Library Aide - Circulation	3	Borrower Services	\$ 24.05	No			35	HS Diploma	No	No
Warwick Public Library	Warwick	73,192	Library Aide - Circulation	5	Borrower Services	\$ 22.11	No			19	HS Diploma	No	No
Warwick Public Library	Warwick	73,192	Library Aide - Circulation	1	Borrower Services	\$ 17.50	No			19	HS Diploma	No	No
Warwick Public Library	Warwick	73,192	Library Aide - Circulation	1	Borrower Services	\$ 17.50	No			12	HS Diploma	No	No
Warwick Public Library	Warwick	73,192	Library Aide - Circulation	1	Borrower Services	\$ 22.11	No			10	HS Diploma	No	No
Warwick Public Library	Warwick	73,192	Library Aide - Circulation	1	Borrower Services	\$ 17.50	No			8	HS Diploma	No	No
Warwick Public Library	Warwick	73,192	Branch Supervisor	2	Branch Manager	\$ 29.00	No			35	HS Diploma	Yes	No
Warwick Public Library	Warwick	73,192	Branch Supervisor	1	Branch Manager	\$ 28.35	No			35	HS Diploma	Yes	No
Warwick Public Library	Warwick	73,192	Children's Librarian	1	Children's Services	\$ 39.01	No			37.5	MLS	No	No
Warwick Public Library	Warwick	73,192	Children's Librarian	1	Children's Services	\$ 34.52	No			37.5	MLS	No	No
Warwick Public Library	Warwick	73,192	Children's Librarian	1	Children's Services	\$ 26.61	No			19	MLS	No	No
Warwick Public Library	Warwick	73,192	Library Aide - Children's	1	Children's Services	\$ 22.11	No			19	HS Diploma	No	No
Warwick Public Library	Warwick	73,192	Library Aide - Children's	1	Children's Services	\$ 17.50	No			19	HS Diploma	No	No
Warwick Public Library	Warwick	73,192	Coordinator of Collections & Technical Services	1	Collection Management	\$ 45.61	No			38	MLS	Yes	No
Warwick Public Library	Warwick	73,192	Library Aide - Technical Services	1	Collection Management	\$ 22.11	No			19	HS Diploma	No	No
Warwick Public Library	Warwick	73,192	Director	1	Director	\$ 63.54	No	\$ 123,903	Yes	37.5	MLS	Yes	No
Warwick Public Library	Warwick	73,192	Custodial Services Leadperson	1	Facilities Maintenance	\$ 33.68	No			40	HS Diploma	Yes	No
Warwick Public Library	Warwick	73,192	Buildings Custodian	1	Facilities Maintenance	\$ 27.42	No			40	Other	No	No
Warwick Public Library	Warwick	73,192	Building Custodian	1	Facilities Maintenance	\$ 26.94	No			40	Other	No	No
Warwick Public Library	Warwick	73,192	Coordinator of Technology	1	Information Technology	\$ 40.01	No			37.5	MLS	Yes	No
Warwick Public Library	Warwick	73,192	Library Aide - Technology	1	Information Technology	\$ 19.04	No			35	HS Diploma	No	Yes
Warwick Public Library	Warwick	73,192	Shelver	3	Page	\$ 14.00	No			16	Other	No	No
Warwick Public Library	Warwick	73,192	Shelver	1	Page	\$ 14.00	No			12	Other	No	No
Warwick Public Library	Warwick	73,192	Shelver	1	Page	\$ 14.00	No			10	Other	No	No
Warwick Public Library	Warwick	73,192	Shelver	1	Page	\$ 14.00	No			8	Other	No	No
Warwick Public Library	Warwick	73,192	Teen Librarian	1	Teen Services	\$ 34.52	No			37.5	MLS	No	No
Warwick Public Library	Warwick	73,192	Coordinator of Youth Services	1	Youth Services (Children & Teen)	\$ 40.01	No			37.5	MLS	Yes	No
Louitt Library	West Greenwich	6,528	Assistant Director/Youth Services Librarian	1	Assistant Director	\$ 28.64	No			35	MLS	No	No
Louitt Library	West Greenwich	6,528	Circulation Head	1	Borrower Services	\$ 22.50	No			22	Bachelor's	No	No
Louitt Library	West Greenwich	6,528	Ill Associate	1	Borrower Services	\$ 19.00	No			19	Bachelor's	No	No
Louitt Library	West Greenwich	6,528	Associate	1	Borrower Services	\$ 16.50	No			12	Bachelor's	No	No
Louitt Library	West Greenwich	6,528	Associate	1	Borrower Services	\$ 15.50	No			12	HS Diploma	No	No
Louitt Library	West Greenwich	6,528	Associate	1	Borrower Services	\$ 17.00	No			12	Bachelor's	No	No
Louitt Library	West Greenwich	6,528	Per Diem	1	Borrower Services	\$ 15.50	No			4	HS Diploma	No	No
Louitt Library	West Greenwich	6,528	Director	1	Director	\$ 38.20	No	\$ 69,524	Yes	35	MLS	Yes	No
West Warwick Public Library	West Warwick	31,012	Administrative Assistant	1	Administrative Staff	\$ 23.85	No			35	Other	No	No
West Warwick Public Library	West Warwick	31,012	Head of Adult Services	1	Adult Services	\$ 29.17	No			35	MLS	Yes	No
West Warwick Public Library	West Warwick	31,012	Adult Services Librarian	1	Adult Services	\$ 24.23	No			35	MLS	Yes	No

Staff Positions by Library FY2024

Location	Municipality	Population	Position Title	No. of Staff	Job Category	Hourly Rate	Hourly Rate Calculated by OLIS	Annual Salary	Annual Salary Calculated by OLIS	Hours per Week	Degree Required	Supervisor?	Vacant?
West Warwick Public Library	West Warwick	31,012	Adult Services Assistant	3	Adult Services	\$ 14.00	No			19	HS Diploma	No	No
West Warwick Public Library	West Warwick	31,012	Head of Circulation	1	Borrower Services	\$ 24.54	No			35	Other	Yes	No
West Warwick Public Library	West Warwick	31,012	Circulation Assistant	5	Borrower Services	\$ 14.00	No			19	HS Diploma	No	No
West Warwick Public Library	West Warwick	31,012	Circulation Assistant	1	Borrower Services	\$ 15.00	No			19	HS Diploma	No	No
West Warwick Public Library	West Warwick	31,012	Cataloger	1	Collection Management	\$ 15.00	No			19	HS Diploma	No	No
West Warwick Public Library	West Warwick	31,012	Library Director	1	Director	\$ 39.58	No	\$ 72,036	Yes	35	MLS	Yes	No
West Warwick Public Library	West Warwick	31,012	Literacy Coordinator	1	Educator	\$ 24.21	No			35	Bachelor's	Yes	No
West Warwick Public Library	West Warwick	31,012	Family Services Assistant	1	Educator	\$ 14.00	No			19	HS Diploma	No	Yes
West Warwick Public Library	West Warwick	31,012	Custodian	1	Facilities Maintenance	\$ 23.00	No			35	HS Diploma	Yes	No
West Warwick Public Library	West Warwick	31,012	Custodial Assistant	1	Facilities Maintenance	\$ 14.00	No			9	None	No	No
West Warwick Public Library	West Warwick	31,012	Technology Coordinator	1	Information Technology	\$ 28.65	No			35	Bachelor's	No	No
West Warwick Public Library	West Warwick	31,012	Head of Youth Services	1	Youth Services (Children & Teen)	\$ 29.17	No			35	MLS	Yes	No
West Warwick Public Library	West Warwick	31,012	Youth Services Librarian	1	Youth Services (Children & Teen)	\$ 21.00	No			35	MLS	Yes	No
West Warwick Public Library	West Warwick	31,012	Youth Services Assistant	1	Youth Services (Children & Teen)	\$ 14.00	No			19	HS Diploma	No	No
West Warwick Public Library	West Warwick	31,012	Youth Services Assistant	1	Youth Services (Children & Teen)	\$ 15.00	No			19	HS Diploma	No	No
Westerly Public Library	Westerly	23,359	Business Office Manager	1	Administrative Staff	\$ 26.11	No			35	HS Diploma	No	No
Westerly Public Library	Westerly	23,359	Director of Marketing & Communications	1	Administrative Staff	\$ 40.83	Yes	\$ 74,311		35	Bachelor's	Yes	No
Westerly Public Library	Westerly	23,359	Marketing & Outreach Manager	1	Administrative Staff	\$ 30.50	No			35	Bachelor's	No	No
Westerly Public Library	Westerly	23,359	Director of Development	1	Administrative Staff	\$ 40.71	Yes	\$ 74,092		35	Bachelor's	Yes	No
Westerly Public Library	Westerly	23,359	Data Entry Specialist	1	Administrative Staff	\$ 20.11	No			20	HS Diploma	No	No
Westerly Public Library	Westerly	23,359	Program & Outreach Coordinator	1	Adult Services	\$ 18.50	No			20	HS Diploma	No	Yes
Westerly Public Library	Westerly	23,359	Head of Adult Services	1	Adult Services	\$ 37.71	Yes	\$ 68,632		35	MLS	Yes	No
Westerly Public Library	Westerly	23,359	Adult Services Librarian	1	Adult Services	\$ 28.93	Yes	\$ 52,653		35	MLS	No	No
Westerly Public Library	Westerly	23,359	Special Collections Librarian	1	Adult Services	\$ 35.98	Yes	\$ 65,484		35	MLS	No	No
Westerly Public Library	Westerly	23,359	Adults Services Associate	2	Adult Services	\$ 17.00	No			20	HS Diploma	No	No
Westerly Public Library	Westerly	23,359	Assistant Director	1	Assistant Director	\$ 42.11	Yes	\$ 76,640		35	MLS	Yes	No
Westerly Public Library	Westerly	23,359	Head of Public Services	1	Borrower Services	\$ 32.00	Yes	\$ 58,240		35	Bachelor's	Yes	No
Westerly Public Library	Westerly	23,359	Public Services Associate	1	Borrower Services	\$ 21.15	No			35	HS Diploma	No	No
Westerly Public Library	Westerly	23,359	Public Services Associate	2	Borrower Services	\$ 16.50	No			20	HS Diploma	No	No
Westerly Public Library	Westerly	23,359	Public Services Associate	1	Borrower Services	\$ 18.51	No			20	HS Diploma	No	No
Westerly Public Library	Westerly	23,359	Public Services Associate	1	Borrower Services	\$ 17.00	No			20	HS Diploma	No	No
Westerly Public Library	Westerly	23,359	Kid's Librarian	1	Children's Services	\$ 27.50	Yes	\$ 50,050		35	MLS	No	No
Westerly Public Library	Westerly	23,359	Tween Librarian	1	Children's Services	\$ 27.50	Yes	\$ 50,050		35	MLS	No	No
Westerly Public Library	Westerly	23,359	Kid's Associate	1	Children's Services	\$ 16.50	No			20	HS Diploma	No	No
Westerly Public Library	Westerly	23,359	Kid's Associate	1	Children's Services	\$ 17.08	No			20	HS Diploma	No	No
Westerly Public Library	Westerly	23,359	Collection Management Associate	1	Collection Management	\$ 19.67	No			35	HS Diploma	No	No
Westerly Public Library	Westerly	23,359	Collection Management Associate	1	Collection Management	\$ 24.84	No			35	HS Diploma	No	No
Westerly Public Library	Westerly	23,359	Executive Director	1	Director	\$ 52.63	Yes	\$ 95,787	No	35	MLS	Yes	No
Westerly Public Library	Westerly	23,359	Facilities Manager	1	Facilities Maintenance	\$ 37.70	Yes	\$ 68,614		35	HS Diploma	Yes	No
Westerly Public Library	Westerly	23,359	Custodian	1	Facilities Maintenance	\$ 20.98	No			35	HS Diploma	No	No
Westerly Public Library	Westerly	23,359	Park Superintendent	1	Facilities Maintenance	\$ 48.29	Yes	\$ 87,888		35	Bachelor's	Yes	No
Westerly Public Library	Westerly	23,359	Groundskeeper	1	Facilities Maintenance	\$ 23.10	No			35	Other	No	No
Westerly Public Library	Westerly	23,359	Groundskeeper	1	Facilities Maintenance	\$ 18.50	No			20	Other	No	No
Westerly Public Library	Westerly	23,359	Groundskeeper	1	Facilities Maintenance	\$ 19.50	No			15	Other	No	No
Westerly Public Library	Westerly	23,359	Park Associate	1	Facilities Maintenance	\$ 19.50	No			15	Other	No	No
Westerly Public Library	Westerly	23,359	Technology & Innovation Coordinator	1	Information Technology	\$ 22.50	No			35	HS Diploma	No	No
Westerly Public Library	Westerly	23,359	Technology Associate	1	Information Technology	\$ 18.50	No			35	HS Diploma	No	No
Westerly Public Library	Westerly	23,359	Teen Librarian	1	Teen Services	\$ 28.93	Yes	\$ 52,653		35	MLS	No	No
Westerly Public Library	Westerly	23,359	Head of Youth Services & Education	1	Youth Services (Children & Teen)	\$ 32.00	Yes	\$ 58,240		35	MLS	Yes	No
Westerly Public Library	Westerly	23,359	Youth Services Associate	1	Youth Services (Children & Teen)	\$ 16.50	No			35	HS Diploma	No	No
Woonsocket Harris Public Library	Woonsocket	43,240	Chief Information and Adult Services Librarian	1	Adult Services	\$ 30.43	No			35	MLS	Yes	No
Woonsocket Harris Public Library	Woonsocket	43,240	Reference and Adult Services Librarian	1	Adult Services	\$ 27.26	No			35	MLS	No	Yes
Woonsocket Harris Public Library	Woonsocket	43,240	Reader's Advisor	1	Adult Services	\$ 22.38	No			35	Bachelor's	No	Yes
Woonsocket Harris Public Library	Woonsocket	43,240	Reference Librarian Part-Time	1	Adult Services	\$ 18.00	No			19	MLS	No	Yes
Woonsocket Harris Public Library	Woonsocket	43,240	Assistant Director/Technology Coordinator	1	Assistant Director	\$ 34.26	Yes	\$ 62,353		35	MLS	Yes	No
Woonsocket Harris Public Library	Woonsocket	43,240	Senior Library Assistant	1	Borrower Services	\$ 19.31	No			35	HS Diploma	No	No
Woonsocket Harris Public Library	Woonsocket	43,240	Junior Library Assistant	1	Borrower Services	\$ 18.51	No			35	HS Diploma	No	No
Woonsocket Harris Public Library	Woonsocket	43,240	Library Assistant Part-Time	2	Borrower Services	\$ 16.00	No			19.5	HS Diploma	No	No
Woonsocket Harris Public Library	Woonsocket	43,240	Children's Library Assistant Part-Time	1	Children's Services	\$ 16.00	No			19.5	HS Diploma	No	No
Woonsocket Harris Public Library	Woonsocket	43,240	Library Technical Aide	1	Collection Management	\$ 20.53	No			35	HS Diploma	No	No
Woonsocket Harris Public Library	Woonsocket	43,240	Paraprofessional	1	Collection Management	\$ 19.88	No			35	HS Diploma	No	No
Woonsocket Harris Public Library	Woonsocket	43,240	Computer Literacy Coordinator	1	Digital Services	\$ 21.50	No			4	Bachelor's	No	No
Woonsocket Harris Public Library	Woonsocket	43,240	Library Director	1	Director	\$ 38.46	Yes	\$ 70,000	No	35	MLS	Yes	No
Woonsocket Harris Public Library	Woonsocket	43,240	Janitor/Security	1	Facilities Maintenance	\$ 18.60	No			40	HS Diploma	No	No
Woonsocket Harris Public Library	Woonsocket	43,240	Library Page	4	Page	\$ 14.00	No			12	None	No	No
Woonsocket Harris Public Library	Woonsocket	43,240	Young Adult Librarian	1	Teen Services	\$ 26.21	No			35	MLS	No	No
Woonsocket Harris Public Library	Woonsocket	43,240	Chief Children's and Youth Services Librarian	1	Youth Services (Children & Teen)	\$ 32.64	No			35	MLS	Yes	No
Woonsocket Harris Public Library	Woonsocket	43,240	Assistant Children's Librarian	1	Youth Services (Children & Teen)	\$ 19.88	No			35	HS Diploma	No	No

Staffing Summary by Library FY2024

Location	Municipality	Library Service Area Population	FTE = Full Time Equivalent 35 hours/week				Number of Staff	Number of Vacant positions	Positions requiring MLS	LSA Population to FTE ratio†
			ALA-MLS*	Total Librarians*	Other Paid Staff	Total Paid Employees				
Barrington Public Library	Barrington	17,153	9.00	9.54	9.03	18.57	45	0	10	924
Rogers Free Library	Bristol	22,493	4.86	5.93	12.13	18.06	31	2	5	1,246
Jesse M. Smith Memorial Library	Burrillville	12,330	5.00	6.00	7.26	13.26	17	1	6	930
Pascoag Free Public Library	Burrillville	3,828	0.63	1.06	1.60	2.66	7	0	2	1,441
Adams Public Library	Central Falls	22,583	1.14	1.71	3.66	5.37	10	2	2	4,204
Cross' Mills Public Library	Charlestown	7,997	2.14	2.14	3.74	5.89	11	0	2	1,359
Coventry Public Library	Coventry	35,688	6.41	8.09	8.69	16.77	32	1	10	2,128
Cranston Public Library	Cranston	82,934	20.40	20.40	26.77	47.17	86	0	28	1,758
Cumberland Public Library	Cumberland	36,405	6.36	6.36	16.36	22.71	32	0	7	1,603
East Greenwich Free Library	East Greenwich	14,312	4.59	4.59	4.89	9.47	15	0	7	1,511
East Providence Public Library	East Providence	47,139	10.00	11.63	15.86	27.49	31	3	10	1,715
Exeter Public Library	Exeter	6,460	2.00	2.00	1.54	3.54	6	0	2	1,823
Libraries of Foster	Foster	4,469	1.14	1.14	3.83	4.97	11	0	1	899
Glocester Manton Free Public Library	Glocester	4,489	1.09	1.09	1.83	2.91	6	0	2	1,540
Harmony Library	Glocester	5,485	1.91	3.84	0.40	4.24	10	0	4	1,293
Ashaway Free Library	Hopkinton	3,778	1.23	1.23	1.17	2.40	6	1	1	1,574
Langworthy Public Library	Hopkinton	4,620	1.00	1.00	1.46	2.46	5	0	1	1,880
Jamesstown Philomenian Library	Jamesstown	5,559	3.43	3.43	4.29	7.71	10	0	3	721
Marian J. Mohr Memorial Library	Johnston	29,568	4.17	4.17	6.03	10.20	17	0	5	2,899
Lincoln Public Library	Lincoln	22,529	5.61	6.01	9.79	15.80	24	0	5	1,426
Brownell Library, Home of Little Compton	Little Compton	3,616	2.00	2.00	1.37	3.37	6	0	2	1,073
Middletown Public Library	Middletown	17,075	3.00	3.00	8.43	11.43	16	1	3	1,494
Mauri Looftjens Memorial Library	Narragansett	14,532	4.57	5.57	5.70	11.27	20	0	4	1,289
Island Free Library	New Shoreham	1,410	4.00	4.00	2.29	6.29	7	1	3	224
Newport Public Library	Newport	25,163	12.51	12.51	14.19	26.70	32	1	14	942
Davisville Free Library	North Kingstown	5,991	0.84	0.84	0.59	1.43	4	0	1	4,194
North Kingstown Free Library	North Kingstown	19,821	8.00	10.00	7.69	17.69	20	2	10	1,121
Willett Free Library	North Kingstown	1,920	0.71	0.71	0.89	1.60	5	0	1	1,200
Mayor Salvatore Mancini Union Free Library	North Providence	34,114	4.00	9.49	11.03	20.51	32	0	4	1,663
North Smithfield Public Library	North Smithfield	12,588	3.14	3.14	3.14	6.29	9	0	3	2,003
Pawtucket Public Library	Pawtucket	75,604	12.17	12.17	14.09	26.26	32	0	14	2,879
Portsmouth Free Public Library	Portsmouth	17,871	2.60	2.60	8.03	10.63	16	0	4	1,681
Community Libraries of Providence	Providence	131,744	27.14	27.14	47.50	74.64	69	3	25	1,765
Providence Public Library	Providence	59,190	16.57	16.57	53.40	69.97	77	3	17	846
Clark Memorial Library	Richmond	8,020	0.91	0.91	1.57	2.49	8	0	2	3,226
Hope Library	Scituate	4,230	1.86	1.86	3.94	5.80	10	0	2	729
North Scituate Public Library	Scituate	6,154	2.91	2.91	4.77	7.69	17	0	4	801
East Smithfield Public Library	Smithfield	9,476	3.57	3.57	8.11	11.68	18	2	4	811
Greenville Public Library	Smithfield	12,642	5.86	5.86	5.83	11.69	19	0	7	1,082
South Kingstown Public Library	South Kingstown	31,931	10.00	11.00	6.20	17.20	25	2	10	1,856
Tiverton Public Library	Tiverton	16,359	3.54	6.54	4.34	10.89	17	3	4	1,503
George Hail Free Library	Warren	11,147	2.80	2.80	3.40	6.20	13	0	3	1,798
Pontiac Free Library	Warwick	9,631	0.50	0.50	1.46	1.96	6	0	1	4,921
Warwick Public Library	Warwick	73,192	15.56	15.56	25.49	41.04	52	1	16	1,783
Loutit Library	West Greenwich	6,528	2.00	2.00	2.20	4.20	8	0	2	1,554
West Warwick Public Library	West Warwick	31,012	5.00	5.00	12.31	17.31	24	1	5	1,791
Westerly Public Library	Westerly	23,359	9.00	9.00	22.14	31.14	37	1	9	750
Woonsocket Harris Public Library	Woonsocket	43,240	5.54	8.54	8.30	16.84	22	3	7	2,567
Total		1,097,379	262.44	287.17	428.68	715.85	1,033	33	294	1,533
Average		22,862	5.47	5.98	8.93	14.91	22	1	6	1,675
Median		14,422	3.79	4.09	5.76	10.76	17	0	4	1,526

Notes

* **ALA-MLS** - This data element includes librarians with master's degrees from programs of library and information studies accredited by the American Library Association.

* **Total Librarians** - This data element includes persons with the title of librarian who do paid work that usually requires professional training and skill in the theoretical or scientific aspects of library work, or both, as distinct from its mechanical or clerical aspect. This data element also includes ALA-MLS.

† **Population to FTE ratio** (LSA Population / Total Paid Employees FTE) - This output measure shows how many people are served by one FTE employee.

Staffing Summary by Population Groups FY2024

Location	Municipality	Population	FTE = Full Time Equivalent 35 hours/week				Number of Staff	Number of Vacant positions	Positions requiring MLS	LSA Population to FTE ratio
			ALA-MLS*	Total Librarians*	Other Paid Staff	Total Paid Employees				
Libraries serving populations 40,000+										
Community Libraries of Providence	Providence	131,744	27.14	27.14	47.50	74.64	69	3	25	1,765
Cranston Public Library	Cranston	82,934	20.40	20.40	26.77	47.17	86	0	28	1,758
Pawtucket Public Library	Pawtucket	75,604	12.17	12.17	14.09	26.26	32	0	14	2,879
Warwick Public Library	Warwick	73,192	15.56	15.56	25.49	41.04	52	1	16	1,783
Providence Public Library	Providence	59,190	16.57	16.57	53.40	69.97	77	3	17	846
East Providence Public Library	East Providence	47,139	10.00	11.63	15.86	27.49	31	3	10	1,715
Woonsocket Harris Public Library	Woonsocket	43,240	5.54	8.54	8.30	16.84	22	3	7	2,567
Libraries serving populations 20,000-39,999										
Cumberland Public Library	Cumberland	36,405	6.36	6.36	16.36	22.71	32	0	7	1,603
Coventry Public Library	Coventry	35,688	6.41	8.09	8.69	16.77	32	1	10	2,128
Mayor Salvatore Mancini Union Free Library	North Providence	34,114	4.00	9.49	11.03	20.51	32	0	4	1,663
South Kingstown Public Library	South Kingstown	31,931	10.00	11.00	6.20	17.20	25	2	10	1,856
West Warwick Public Library	West Warwick	31,012	5.00	5.00	12.31	17.31	24	1	5	1,791
Marian J. Mohr Memorial Library	Johnston	29,568	4.17	4.17	6.03	10.20	17	0	5	2,899
Newport Public Library	Newport	25,163	12.51	12.51	14.19	26.70	32	1	14	942
Westerly Public Library	Westerly	23,359	9.00	9.00	22.14	31.14	37	1	9	750
Adams Public Library	Central Falls	22,583	1.14	1.71	3.66	5.37	10	2	2	4,204
Lincoln Public Library	Lincoln	22,529	5.61	6.01	9.79	15.80	24	0	5	1,426
Rogers Free Library	Bristol	22,493	4.86	5.93	12.13	18.06	31	2	5	1,246
Libraries serving populations 10,000-19,999										
North Kingstown Free Library	North Kingstown	19,821	8.00	10.00	7.69	17.69	20	2	10	1,121
Portsmouth Free Public Library	Portsmouth	17,871	2.60	2.60	8.03	10.63	16	0	4	1,681
Barrington Public Library	Barrington	17,153	9.00	9.54	9.03	18.57	45	0	10	924
Middletown Public Library	Middletown	17,075	3.00	3.00	8.43	11.43	16	1	3	1,494
Tiverton Public Library	Tiverton	16,359	3.54	6.54	4.34	10.89	17	3	4	1,503
Maury Loontjens Memorial Library	Narragansett	14,532	4.57	5.57	5.70	11.27	20	0	4	1,289
East Greenwich Free Library	East Greenwich	14,312	4.59	4.59	4.89	9.47	15	0	7	1,511
Greenville Public Library	Smithfield	12,642	5.86	5.86	5.83	11.69	19	0	7	1,082
North Smithfield Public Library	North Smithfield	12,588	3.14	3.14	3.14	6.29	9	0	3	2,003
Jesse M. Smith Memorial Library	Burrillville	12,330	5.00	6.00	7.26	13.26	17	1	6	930
George Hail Free Library	Warren	11,147	2.80	2.80	3.40	6.20	13	0	3	1,798

Staffing Summary by Library by Population FY2024

Location	Municipality	Population	FTE = Full Time Equivalent 35 hours/week				Number of Staff	Number of Vacant positions	Positions requiring MLS	LSA Population to FTE ratio†
			ALA-MLS*	Total Librarians*	Other Paid Staff	Total Paid Employees				
Libraries serving populations 5,000-9,999										
Pontiac Free Library	Warwick	9,631	0.50	0.50	1.46	1.96	6	0	1	4,921
East Smithfield Public Library	Smithfield	9,476	3.57	3.57	8.11	11.68	18	2	4	811
Clark Memorial Library	Richmond	8,020	0.91	0.91	1.57	2.49	8	0	2	3,226
Cross' Mills Public Library	Charlestown	7,997	2.14	2.14	3.74	5.89	11	0	2	1,359
Loutit Library	West Greenwich	6,528	2.00	2.00	2.20	4.20	8	0	2	1,554
Exeter Public Library	Exeter	6,460	2.00	2.00	1.54	3.54	6	0	2	1,823
North Scituate Public Library	Scituate	6,154	2.91	2.91	4.77	7.69	17	0	4	801
Davisville Free Library	North Kingstown	5,991	0.84	0.84	0.59	1.43	4	0	1	4,194
Jamestown Philomenian Library	Jamestown	5,559	3.43	3.43	4.29	7.71	10	0	3	721
Harmony Library	Glocester	5,485	1.91	3.84	0.40	4.24	10	0	4	1,293
Libraries serving populations below 5,000										
Langworthy Public Library	Hopkinton	4,620	1.00	1.00	1.46	2.46	5	0	1	1,880
Glocester Manton Free Public Library	Glocester	4,489	1.09	1.09	1.83	2.91	6	0	2	1,540
Libraries of Foster	Foster	4,469	1.14	1.14	3.83	4.97	11	0	1	899
Hope Library	Scituate	4,230	1.86	1.86	3.94	5.80	10	0	2	729
Pascoag Free Public Library	Burrillville	3,828	0.63	1.06	1.60	2.66	7	0	2	1,441
Ashaway Free Library	Hopkinton	3,778	1.23	1.23	1.17	2.40	6	1	1	1,574
Brownell Library, Home of Little Compton	Little Compton	3,616	2.00	2.00	1.37	3.37	6	0	2	1,073
Willett Free Library	North Kingstown	1,920	0.71	0.71	0.89	1.60	5	0	1	1,200
Island Free Library	New Shoreham	1,410	4.00	4.00	2.29	6.29	7	1	3	224
Total		1,097,379	262.44	287.17	428.68	715.85	1,033	33	294	1,533
Average		22,862	5.47	5.98	8.93	14.91	22	1	6	1,675
Median		14,422	3.79	4.09	5.76	10.76	17	0	4	1,526

Notes
 * **ALA-MLS** - This data element includes librarians with master's degrees from programs of library and information studies accredited by the American Library Association.
 * **Total Librarians** - This data element includes persons with the title of librarian who do paid work that usually requires professional training and skill in the theoretical or scientific aspects of library work, or both, as distinct from its mechanical or clerical aspect. This data element also includes ALA-MLS.
 † **Population to FTE ratio** (LSA Population / Total Paid Employees FTE) - This output measure shows how many people are served by one FTE employee.

Staffing Measures by Library FY2024

Location	Municipality	Total Operating Expenditures	Positions requiring MLS	Total Paid Employees FTE (state)*	Number of Staff	% of staff positions requiring MLS	Salary Expenditures	Employee Benefits Expenditures	Staff Expenditures (I+J) as % of Total Operating Expenditures	Staff Expenditures per capita	Staff Expenditures per FTE
Barrington Public Library	Barrington	\$ 1,788,645	10	18.57	45	22%	\$ 1,164,226	\$ 355,655	85%	\$ 88.61	\$ 81,840
Rogers Free Library	Bristol	\$ 1,163,749	5	18.06	31	16%	\$ 724,984	\$ 192,090	79%	\$ 40.77	\$ 50,787
Jesse M. Smith Memorial Library	Burrillville	\$ 1,028,274	6	13.26	17	35%	\$ 593,237	\$ 172,491	74%	\$ 62.10	\$ 57,760
Pascoag Free Public Library	Burrillville	\$ 141,914	2	2.66	7	29%	\$ 70,106	\$ 12,661	58%	\$ 21.62	\$ 31,149
Adams Public Library	Central Falls	\$ 247,209	2	5.37	10	20%	\$ 152,805	\$ 3,405	63%	\$ 6.92	\$ 29,082
Cross' Mills Public Library	Charlestown	\$ 415,201	2	5.89	11	18%	\$ 256,266	\$ 37,604	71%	\$ 36.75	\$ 49,929
Coventry Public Library	Coventry	\$ 1,355,385	10	16.77	32	31%	\$ 799,895	\$ 173,940	72%	\$ 27.29	\$ 58,065
Cranston Public Library	Cranston	\$ 4,003,523	28	47.17	86	33%	\$ 2,610,447	\$ 672,201	82%	\$ 39.58	\$ 69,590
Cumberland Public Library	Cumberland	\$ 1,921,573	7	22.71	32	22%	\$ 1,060,066	\$ 399,258	76%	\$ 40.09	\$ 64,247
East Greenwich Free Library	East Greenwich	\$ 748,565	7	9.47	15	47%	\$ 458,902	\$ 73,948	71%	\$ 37.23	\$ 56,259
East Providence Public Library	East Providence	\$ 2,529,402	10	27.49	31	32%	\$ 1,364,128	\$ 711,123	82%	\$ 44.02	\$ 75,503
Exeter Public Library	Exeter	\$ 309,956	2	3.54	6	33%	\$ 155,536	\$ 56,626	68%	\$ 32.84	\$ 59,884
Libraries of Foster	Foster	\$ 232,556	1	4.97	11	9%	\$ 161,075	\$ 6,523	72%	\$ 37.50	\$ 33,712
Glocester Manton Free Public Library	Glocester	\$ 241,365	2	2.91	6	33%	\$ 138,324	\$ 33,169	71%	\$ 38.20	\$ 58,846
Harmony Library	Glocester	\$ 286,834	4	4.24	10	40%	\$ 165,397	\$ 18,707	64%	\$ 33.56	\$ 43,392
Ashaway Free Library	Hopkinton	\$ 135,546	1	2.40	6	17%	\$ 72,366	\$ 6,375	58%	\$ 20.84	\$ 32,809
Langworthy Public Library	Hopkinton	\$ 129,428	1	2.46	5	20%	\$ 80,247	\$ 6,888	67%	\$ 18.86	\$ 35,462
Jamestown Philomenian Library	Jamestown	\$ 599,364	3	7.71	10	30%	\$ 332,737	\$ 82,063	69%	\$ 74.62	\$ 53,770
Marian J. Mohr Memorial Library	Johnston	\$ 664,287	5	10.20	17	29%	\$ 333,441	\$ 206,152	81%	\$ 18.25	\$ 52,901
Lincoln Public Library	Lincoln	\$ 1,357,871	5	15.80	24	21%	\$ 734,137	\$ 308,837	77%	\$ 46.29	\$ 66,011
Brownell Library, Home of Little Compton	Little Compton	\$ 281,118	2	3.37	6	33%	\$ 160,180	\$ 48,535	74%	\$ 57.72	\$ 61,907
Middletown Public Library	Middletown	\$ 914,779	3	11.43	16	19%	\$ 455,487	\$ 124,132	63%	\$ 33.95	\$ 50,717
Maury Looftjens Memorial Library	Narragansett	\$ 1,098,541	4	11.27	20	20%	\$ 458,330	\$ 336,562	72%	\$ 54.70	\$ 70,523
Island Free Library	New Shoreham	\$ 566,913	3	6.29	7	43%	\$ 296,698	\$ 104,133	71%	\$ 284.28	\$ 63,769
Newport Public Library	Newport	\$ 2,693,163	14	26.70	32	44%	\$ 1,216,392	\$ 360,407	59%	\$ 62.66	\$ 59,056
Davisville Free Library	North Kingstown	\$ 87,037	1	1.43	4	25%	\$ 51,133	\$ -	59%	\$ 8.53	\$ 35,793
North Kingstown Free Library	North Kingstown	\$ 1,662,431	10	17.69	20	50%	\$ 747,906	\$ 291,775	63%	\$ 52.45	\$ 58,786
Willett Free Library	North Kingstown	\$ 126,893	1	1.60	5	20%	\$ 77,001	\$ -	61%	\$ 40.10	\$ 48,126
Mayor Salvatore Mancini Union Free Library	North Providence	\$ 1,039,502	4	20.51	32	13%	\$ 729,144	\$ -	70%	\$ 21.37	\$ 35,543
North Smithfield Public Library	North Smithfield	\$ 490,588	3	6.29	9	33%	\$ 312,558	\$ 7,985	65%	\$ 25.46	\$ 50,995
Pawtucket Public Library	Pawtucket	\$ 2,637,134	14	26.26	32	44%	\$ 1,514,276	\$ 589,358	80%	\$ 27.82	\$ 80,117
Portsmouth Free Public Library	Portsmouth	\$ 747,589	4	10.63	16	25%	\$ 440,480	\$ 94,963	72%	\$ 29.96	\$ 50,378
Community Libraries of Providence	Providence	\$ 6,172,525	25	74.64	69	36%	\$ 3,324,001	\$ 1,031,098	71%	\$ 33.06	\$ 58,346
Providence Public Library	Providence	\$ 9,038,036	17	69.97	77	22%	\$ 4,023,960	\$ 602,524	51%	\$ 78.16	\$ 66,120
Clark Memorial Library	Richmond	\$ 166,170	2	2.49	8	25%	\$ 93,026	\$ 8,029	61%	\$ 12.60	\$ 40,654
Hope Library	Scituate	\$ 346,163	2	5.80	10	20%	\$ 224,600	\$ 17,707	70%	\$ 57.28	\$ 41,777
North Scituate Public Library	Scituate	\$ 405,093	4	7.69	17	24%	\$ 263,341	\$ 20,156	70%	\$ 46.07	\$ 36,886
East Smithfield Public Library	Smithfield	\$ 819,992	4	11.68	18	22%	\$ 474,561	\$ 101,787	70%	\$ 60.82	\$ 49,351
Greenville Public Library	Smithfield	\$ 1,200,414	7	11.69	19	37%	\$ 582,583	\$ 188,782	64%	\$ 61.02	\$ 66,009
South Kingstown Public Library	South Kingstown	\$ 1,393,617	10	17.20	25	40%	\$ 805,841	\$ 312,405	80%	\$ 35.02	\$ 65,014
Tiverton Public Library	Tiverton	\$ 790,740	4	10.89	17	24%	\$ 453,883	\$ 108,005	71%	\$ 34.35	\$ 51,617
George Hail Free Library	Warren	\$ 434,553	3	6.20	13	23%	\$ 299,090	\$ 20,296	73%	\$ 28.65	\$ 51,514
Pontiac Free Library	Warwick	\$ 128,429	1	1.96	6	17%	\$ 70,627	\$ -	55%	\$ 7.33	\$ 36,087
Warwick Public Library	Warwick	\$ 4,533,017	16	41.04	52	31%	\$ 2,118,597	\$ 1,245,557	74%	\$ 45.96	\$ 81,967
Louttit Library	West Greenwich	\$ 358,647	2	4.20	8	25%	\$ 231,492	\$ 26,842	72%	\$ 39.57	\$ 61,508
West Warwick Public Library	West Warwick	\$ 1,188,682	5	17.31	24	21%	\$ 693,464	\$ 179,871	73%	\$ 28.16	\$ 50,440
Westerly Public Library	Westerly	\$ 2,718,615	9	31.14	37	24%	\$ 1,537,093	\$ 284,663	67%	\$ 77.99	\$ 58,497
Woonsocket Harris Public Library	Woonsocket	\$ 1,246,265	7	16.84	22	32%	\$ 602,845	\$ 351,930	77%	\$ 22.08	\$ 56,687
Total		\$ 62,587,293	294	715.85	1,033	28%	\$ 33,686,911	\$ 9,987,218	70%	\$ 39.80	\$ 61,010
Average		\$ 1,303,902	6	14.91	22	28%	\$ 701,811	\$ 208,067	70%	\$ 44.44	\$ 54,150
Median		\$ 769,653	4	10.76	17	25%	\$ 454,685	\$ 102,960	71%	\$ 37.37	\$ 55,015

Notes

* Total Paid Employees FTE (state) - This is the calculation of the number of Full Time Equivalent employees using 35 hours per week as the measurement of full time. (Hours per week for all paid staff / 35 hours per week)

Staffing Measures by Population Groups FY2024

Location	Municipality	Library Service Area Population	Total Operating Expenditures	Positions requiring MLS	Total Paid Employees FTE (state)*	Number of Staff	% of staff positions requiring MLS	Salary Expenditures	Employee Benefits Expenditures	Staff Expenditures (I+J) as % of Total Operating Expenditures	Staff Expenditures per capita	Staff Expenditures per FTE
Libraries serving populations 40,000+												
Community Libraries of Providence	Providence	131,744	\$ 6,172,525	25	74.64	69	36%	\$ 3,324,001	\$ 1,031,098	71%	\$ 33.06	\$ 58,346
Cranston Public Library	Cranston	82,934	\$ 4,003,523	28	47.17	86	33%	\$ 2,610,447	\$ 672,201	82%	\$ 39.58	\$ 69,590
Pawtucket Public Library	Pawtucket	75,604	\$ 2,637,134	14	26.26	32	44%	\$ 1,514,276	\$ 589,358	80%	\$ 27.82	\$ 80,117
Warwick Public Library	Warwick	73,192	\$ 4,533,017	16	41.04	52	31%	\$ 2,118,597	\$ 1,245,557	74%	\$ 45.96	\$ 81,967
Providence Public Library	Providence	59,190	\$ 9,038,036	17	69.97	77	22%	\$ 4,023,960	\$ 602,524	51%	\$ 78.16	\$ 66,120
East Providence Public Library	East Providence	47,139	\$ 2,529,402	10	27.49	31	32%	\$ 1,364,128	\$ 711,123	82%	\$ 44.02	\$ 75,503
Woonsocket Harris Public Library	Woonsocket	43,240	\$ 1,246,265	7	16.84	22	32%	\$ 602,845	\$ 351,930	77%	\$ 22.08	\$ 56,687
Libraries serving populations 20,000-39,999												
Cumberland Public Library	Cumberland	36,405	\$ 1,921,573	7	22.71	32	22%	\$ 1,060,066	\$ 399,258	76%	\$ 40.09	\$ 64,247
Coventry Public Library	Coventry	35,688	\$ 1,355,385	10	16.77	32	31%	\$ 799,895	\$ 173,940	72%	\$ 27.29	\$ 58,065
Mayor Salvatore Mancini Union Free Library	North Providence	34,114	\$ 1,039,502	4	20.51	32	13%	\$ 729,144	\$ -	70%	\$ 21.37	\$ 35,543
South Kingstown Public Library	South Kingstown	31,931	\$ 1,393,617	10	17.20	25	40%	\$ 805,841	\$ 312,405	80%	\$ 35.02	\$ 65,014
West Warwick Public Library	West Warwick	31,012	\$ 1,188,682	5	17.31	24	21%	\$ 693,464	\$ 179,871	73%	\$ 28.16	\$ 50,440
Marian J. Mohr Memorial Library	Johnston	29,568	\$ 664,287	5	10.20	17	29%	\$ 333,441	\$ 206,152	81%	\$ 18.25	\$ 52,901
Newport Public Library	Newport	25,163	\$ 2,693,163	14	26.70	32	44%	\$ 1,216,392	\$ 360,407	59%	\$ 62.66	\$ 59,056
Westerly Public Library	Westerly	23,359	\$ 2,718,615	9	31.14	37	24%	\$ 1,537,093	\$ 284,663	67%	\$ 77.99	\$ 58,497
Adams Public Library	Central Falls	22,583	\$ 247,209	2	5.37	10	20%	\$ 152,805	\$ 3,405	63%	\$ 6.92	\$ 29,082
Lincoln Public Library	Lincoln	22,529	\$ 1,357,871	5	15.80	24	21%	\$ 734,137	\$ 308,837	77%	\$ 46.29	\$ 66,011
Rogers Free Library	Bristol	22,493	\$ 1,163,749	5	18.06	31	16%	\$ 724,984	\$ 192,090	79%	\$ 40.77	\$ 50,787
Libraries serving populations 10,000-19,999												
North Kingstown Free Library	North Kingstown	19,821	\$ 1,662,431	10	17.69	20	50%	\$ 747,906	\$ 291,775	63%	\$ 52.45	\$ 58,786
Portsmouth Free Public Library	Portsmouth	17,871	\$ 747,589	4	10.63	16	25%	\$ 440,480	\$ 94,963	72%	\$ 29.96	\$ 50,378
Barrington Public Library	Barrington	17,153	\$ 1,788,645	10	18.57	45	22%	\$ 1,164,226	\$ 355,655	85%	\$ 88.61	\$ 81,840
Middletown Public Library	Middletown	17,075	\$ 914,779	3	11.43	16	19%	\$ 455,487	\$ 124,132	63%	\$ 33.95	\$ 50,717
Tiverton Public Library	Tiverton	16,359	\$ 790,740	4	10.89	17	24%	\$ 453,883	\$ 108,005	71%	\$ 34.35	\$ 51,617
Maury Loontjens Memorial Library	Narragansett	14,532	\$ 1,098,541	4	11.27	20	20%	\$ 458,330	\$ 336,562	72%	\$ 54.70	\$ 70,523
East Greenwich Free Library	East Greenwich	14,312	\$ 748,565	7	9.47	15	47%	\$ 458,902	\$ 73,948	71%	\$ 37.23	\$ 56,259
Greenville Public Library	Smithfield	12,642	\$ 1,200,414	7	11.69	19	37%	\$ 582,583	\$ 188,782	64%	\$ 61.02	\$ 66,009
North Smithfield Public Library	North Smithfield	12,588	\$ 490,588	3	6.29	9	33%	\$ 312,558	\$ 7,985	65%	\$ 25.46	\$ 50,995
Jesse M. Smith Memorial Library	Burrillville	12,330	\$ 1,028,274	6	13.26	17	35%	\$ 593,237	\$ 172,491	74%	\$ 62.10	\$ 57,760
George Hail Free Library	Warren	11,147	\$ 434,553	3	6.20	13	23%	\$ 299,090	\$ 20,296	73%	\$ 28.65	\$ 51,514

Staffing Measures by Population Groups FY2024

Location	Municipality	Library Service Area Population	Total Operating Expenditures	Positions requiring MLS	Total Paid Employees FTE (state)*	Number of Staff	% of staff positions requiring MLS	Salary Expenditures	Employee Benefits Expenditures	Staff Expenditures (I+J) as % of Total Operating Expenditures	Staff Expenditures per capita	Staff Expenditures per FTE
Libraries serving populations 5,000-9,999												
Pontiac Free Library	Warwick	9,631	\$ 128,429	1	1.96	6	17%	\$ 70,627	\$ -	55%	\$ 7.33	\$ 36,087
East Smithfield Public Library	Smithfield	9,476	\$ 819,992	4	11.68	18	22%	\$ 474,561	\$ 101,787	70%	\$ 60.82	\$ 49,351
Clark Memorial Library	Richmond	8,020	\$ 166,170	2	2.49	8	25%	\$ 93,026	\$ 8,029	61%	\$ 12.60	\$ 40,654
Cross' Mills Public Library	Charlestown	7,997	\$ 415,201	2	5.89	11	18%	\$ 256,266	\$ 37,604	71%	\$ 36.75	\$ 49,929
Louttit Library	West Greenwich	6,528	\$ 358,647	2	4.20	8	25%	\$ 231,492	\$ 26,842	72%	\$ 39.57	\$ 61,508
Exeter Public Library	Exeter	6,460	\$ 309,956	2	3.54	6	33%	\$ 155,536	\$ 56,626	68%	\$ 32.84	\$ 59,884
North Scituate Public Library	Scituate	6,154	\$ 405,093	4	7.69	17	24%	\$ 263,341	\$ 20,156	70%	\$ 46.07	\$ 36,886
Davisville Free Library	North Kingstown	5,991	\$ 87,037	1	1.43	4	25%	\$ 51,133	\$ -	59%	\$ 8.53	\$ 35,793
Jamestown Philomenian Library	Jamestown	5,559	\$ 599,364	3	7.71	10	30%	\$ 332,737	\$ 82,063	69%	\$ 74.62	\$ 53,770
Harmony Library	Glocester	5,485	\$ 286,834	4	4.24	10	40%	\$ 165,397	\$ 18,707	64%	\$ 33.56	\$ 43,392
Libraries serving populations below 5,000												
Langworthy Public Library	Hopkinton	4,620	\$ 129,428	1	2.46	5	20%	\$ 80,247	\$ 6,888	67%	\$ 18.86	\$ 35,462
Glocester Manton Free Public Library	Glocester	4,489	\$ 241,365	2	2.91	6	33%	\$ 138,324	\$ 33,169	71%	\$ 38.20	\$ 58,846
Libraries of Foster	Foster	4,469	\$ 232,556	1	4.97	11	9%	\$ 161,075	\$ 6,523	72%	\$ 37.50	\$ 33,712
Hope Library	Scituate	4,230	\$ 346,163	2	5.80	10	20%	\$ 224,600	\$ 17,707	70%	\$ 57.28	\$ 41,777
Pascoag Free Public Library	Burrillville	3,828	\$ 141,914	2	2.66	7	29%	\$ 70,106	\$ 12,661	58%	\$ 21.62	\$ 31,149
Ashaway Free Library	Hopkinton	3,778	\$ 135,546	1	2.40	6	17%	\$ 72,366	\$ 6,375	58%	\$ 20.84	\$ 32,809
Brownell Library, Home of Little Compton	Little Compton	3,616	\$ 281,118	2	3.37	6	33%	\$ 160,180	\$ 48,535	74%	\$ 57.72	\$ 61,907
Willett Free Library	North Kingstown	1,920	\$ 126,893	1	1.60	5	20%	\$ 77,001	\$ -	61%	\$ 40.10	\$ 48,126
Island Free Library	New Shoreham	1,410	\$ 566,913	3	6.29	7	43%	\$ 296,698	\$ 104,133	71%	\$ 284.28	\$ 63,769
Total		1,097,379	\$ 62,587,293	294	715.85	1,033	28%	\$ 33,686,911	\$ 9,987,218	70%	\$ 39.80	\$ 61,010
Average		22,862	\$ 1,303,902	6	14.91	22	28%	\$ 701,811	\$ 208,067	70%	\$ 44.44	\$ 54,150
Median		14,422	\$ 769,653	4	10.76	17	25%	\$ 454,685	\$ 102,960	71%	\$ 37.37	\$ 55,015

Notes
 * Total Paid Employees FTE (state) - This is the calculation of the number of Full Time Equivalent employees using 35 hours per week as the measurement of full time. (Hours per week for all paid staff / 35 hours per week)

Libraries by Total Square Footage FY2024

Location	Municipality	LSA Population	Total Square Footage	Number of Outlets	Total Paid Employees FTE (35 hrs)	Number of Staff
More than 50,000 sqft		406,824	431,084	22	286.69	353
Providence Public Library	Providence	59,190	116,000	1	69.97	77
Community Libraries of Providence	Providence	131,744	82,247	9	74.64	69
Warwick Public Library	Warwick	73,192	67,941	4	41.04	52
Cranston Public Library	Cranston	82,934	59,686	6	47.17	86
Cumberland Public Library	Cumberland	36,405	55,210	1	22.71	32
Westerly Public Library	Westerly	23,359	50,000	1	31.14	37
25,000 - 49,999 sqft		332,098	328,898	13	200.31	286
Newport Public Library	Newport	25,163	47,459	1	26.70	32
Pawtucket Public Library	Pawtucket	75,604	42,351	1	26.26	32
Mayor Salvatore Mancini Union Free Library	North Providence	34,114	37,650	1	20.51	32
East Providence Public Library	East Providence	47,139	36,140	3	27.49	31
Barrington Public Library	Barrington	17,153	30,000	1	18.57	45
West Warwick Public Library	West Warwick	31,012	30,000	1	17.31	24
Rogers Free Library	Bristol	22,493	28,357	1	18.06	31
North Kingstown Free Library	North Kingstown	19,821	26,000	1	17.69	20
Woonsocket Harris Public Library	Woonsocket	43,240	25,899	1	16.84	22
Tiverton Public Library	Tiverton	16,359	25,042	2	10.89	17
10,000 - 24,999 sqft		223,513	189,023	15	147.11	229
Jesse M. Smith Memorial Library	Burrillville	12,330	24,900	1	13.26	17
South Kingstown Public Library	South Kingstown	31,931	23,600	3	17.20	25
Maury Loontjens Memorial Library	Narragansett	14,532	18,493	1	11.27	20
Jamestown Philomenian Library	Jamestown	5,559	16,076	1	7.71	10
Portsmouth Free Public Library	Portsmouth	17,871	15,030	1	10.63	16
Greenville Public Library	Smithfield	12,642	14,575	1	11.69	19
Lincoln Public Library	Lincoln	22,529	14,280	1	15.80	24
Coventry Public Library	Coventry	35,688	13,200	2	16.77	32
East Smithfield Public Library	Smithfield	9,476	12,826	1	11.68	18
Middletown Public Library	Middletown	17,075	12,743	1	11.43	16
East Greenwich Free Library	East Greenwich	14,312	11,800	1	9.47	15
Marian J. Mohr Memorial Library	Johnston	29,568	11,500	1	10.20	17

Libraries by Total Square Footage FY2024

Location	Municipality	LSA Population	Total Square Footage	Number of Outlets	Total Paid Employees FTE (35 hrs)	Number of Staff
5,000 - 9,999 sqft		89,071	73,620	11	58.41	107
Island Free Library	New Shoreham	1,410	9,445	1	6.29	7
Hope Library	Scituate	4,230	7,036	1	5.80	10
Harmony Library	Glocester	5,485	6,986	1	4.24	10
North Smithfield Public Library	North Smithfield	12,588	6,985	1	6.29	9
George Hail Free Library	Warren	11,147	6,760	1	6.20	13
Cross' Mills Public Library	Charlestown	7,997	6,707	1	5.89	11
Exeter Public Library	Exeter	6,460	6,400	1	3.54	6
Louttit Library	West Greenwich	6,528	6,351	1	4.20	8
North Scituate Public Library	Scituate	6,154	6,000	1	7.69	17
Glocester Manton Free Public Library	Glocester	4,489	5,950	1	2.91	6
Adams Public Library	Central Falls	22,583	5,000	1	5.37	10
Less than 5,000 sqft		45,873	27,157	10	23.33	58
Clark Memorial Library	Richmond	8,020	4,550	1	2.49	8
Pascoag Free Public Library	Burrillville	3,828	3,456	1	2.66	7
Libraries of Foster	Foster	4,469	3,406	2	4.97	11
Pontiac Free Library	Warwick	9,631	3,320	1	1.96	6
Ashaway Free Library	Hopkinton	3,778	2,887	1	2.40	6
Langworthy Public Library	Hopkinton	4,620	2,868	1	2.46	5
Brownell Library, Home of Little Compton	Little Compton	3,616	2,745	1	3.37	6
Davisville Free Library	North Kingstown	5,991	2,500	1	1.43	4
Willett Free Library	North Kingstown	1,920	1,425	1	1.60	5

Salary Ranges - State Summary FY2024

Job Category	Non-supervisor						Supervisor						Combined	
	No. of staff employed per category*	Vacancies	Average	Median	Low	High	No. of staff employed per category*	Vacancies	Average	Median	Low	High	Average	Median
Administrative Staff	47	5	\$ 26.46	\$ 25.00	\$ 14.00	\$ 42.82	14	0	\$ 42.53	\$ 41.85	\$ 18.84	\$ 62.57	\$ 30.15	\$ 27.14
Adult Services	82	5	\$ 23.43	\$ 21.58	\$ 14.00	\$ 39.18	45	1	\$ 30.47	\$ 30.88	\$ 14.00	\$ 46.84	\$ 26.05	\$ 25.64
Assistant Director	1	0	\$ 28.64	\$ 28.64	\$ 28.64	\$ 28.64	18	1	\$ 39.38	\$ 38.09	\$ 18.86	\$ 64.28	\$ 38.82	\$ 36.30
Borrower Services	300	6	\$ 17.15	\$ 16.00	\$ 14.00	\$ 32.80	36	1	\$ 24.74	\$ 24.54	\$ 15.73	\$ 43.56	\$ 18.11	\$ 16.40
Branch Manager	7	1	\$ 29.79	\$ 29.41	\$ 24.29	\$ 33.69	11	0	\$ 34.91	\$ 36.05	\$ 23.46	\$ 46.11	\$ 32.80	\$ 32.90
Children's Services	73	3	\$ 21.60	\$ 20.00	\$ 14.00	\$ 41.71	18	0	\$ 31.18	\$ 32.43	\$ 16.00	\$ 39.22	\$ 23.41	\$ 21.69
Collection Management	35	0	\$ 21.76	\$ 21.17	\$ 14.00	\$ 40.82	17	0	\$ 31.81	\$ 32.60	\$ 18.04	\$ 45.61	\$ 25.04	\$ 23.15
Digital Services	8	0	\$ 22.01	\$ 21.66	\$ 17.37	\$ 30.30	3	0	\$ 32.92	\$ 33.63	\$ 31.28	\$ 33.84	\$ 24.99	\$ 21.96
Director							48	1	\$ 41.74	\$ 39.59	\$ 20.37	\$ 85.08	\$ 41.74	\$ 39.59
Educator	14	2	\$ 26.17	\$ 26.30	\$ 14.00	\$ 50.00	5	0	\$ 33.09	\$ 35.19	\$ 24.21	\$ 36.15	\$ 27.99	\$ 27.32
Facilities Maintenance	59	0	\$ 20.50	\$ 19.00	\$ 14.00	\$ 40.00	11	0	\$ 33.02	\$ 33.66	\$ 19.60	\$ 48.29	\$ 22.59	\$ 19.85
Information Technology	17	2	\$ 28.61	\$ 28.25	\$ 14.00	\$ 50.46	8	0	\$ 29.95	\$ 29.80	\$ 18.00	\$ 40.01	\$ 29.04	\$ 29.25
Page	61	3	\$ 14.23	\$ 14.00	\$ 13.00	\$ 18.87							\$ 14.40	\$ 14.00
Teen Services	18	0	\$ 26.60	\$ 27.11	\$ 17.00	\$ 34.52	7	0	\$ 31.81	\$ 32.73	\$ 20.00	\$ 39.42	\$ 28.12	\$ 29.04
Youth Services (Children and Teen)	43	3	\$ 21.83	\$ 21.00	\$ 14.00	\$ 37.71	27	0	\$ 28.33	\$ 29.59	\$ 17.50	\$ 50.46	\$ 24.43	\$ 23.30
Totals	765	30					268	4						

Job Category - Definitions for each category are available on the Job Category Definitions tab.

* **Number of Staff Employed per Category** - Total number of individuals employed across public libraries within the state, according to the category in which their position was reported.

Hourly Rates - To enhance comparability, OLIS has calculated hourly wage rates, based on a 52-week work year, for positions where only annual salary information was provided.

Salary Ranges by Population Group FY2024

Size of Service Population	Job Category	Non-supervisor						Supervisor						Combined	
		No. of staff employed per category	Vacancies	Average	Median	Low	High	No. of staff employed per category	Vacancies	Average	Median	Low	High	Average	Median
40,000 +															
	Administrative Staff	22	2	\$ 29.79	\$ 29.94	\$ 14.00	\$ 42.82	11	0	\$ 45.01	\$ 43.88	\$ 29.50	\$ 62.57	\$ 34.86	\$ 33.59
	Adult Services	31	3	\$ 26.54	\$ 26.00	\$ 16.44	\$ 39.18	13	1	\$ 37.37	\$ 37.76	\$ 30.43	\$ 46.84	\$ 29.71	\$ 28.06
	Assistant Director							6	0	\$ 50.66	\$ 50.02	\$ 34.26	\$ 64.28	\$ 50.66	\$ 50.02
	Borrower Services	98	3	\$ 19.01	\$ 17.50	\$ 14.00	\$ 32.80	10	0	\$ 28.49	\$ 27.90	\$ 21.55	\$ 43.56	\$ 20.00	\$ 18.36
	Branch Manager	6	1	\$ 30.71	\$ 30.76	\$ 27.43	\$ 33.69	9	0	\$ 36.42	\$ 37.19	\$ 28.35	\$ 46.11	\$ 33.97	\$ 33.30
	Children's Services	12	0	\$ 27.96	\$ 26.62	\$ 15.41	\$ 41.71	5	0	\$ 36.36	\$ 35.85	\$ 34.52	\$ 39.22	\$ 30.06	\$ 34.52
	Collection Management	13	0	\$ 24.88	\$ 22.81	\$ 14.00	\$ 40.82	7	0	\$ 37.26	\$ 37.19	\$ 22.72	\$ 45.61	\$ 29.21	\$ 25.99
	Digital Services	7	0	\$ 22.22	\$ 21.83	\$ 17.37	\$ 30.30	3	0	\$ 32.92	\$ 33.63	\$ 31.28	\$ 33.84	\$ 25.43	\$ 23.39
	Director							7	0	\$ 58.48	\$ 55.29	\$ 38.46	\$ 85.08	\$ 58.48	\$ 55.29
	Educator	13	1	\$ 27.10	\$ 27.20	\$ 15.00	\$ 50.00	4	0	\$ 35.31	\$ 35.40	\$ 34.30	\$ 36.15	\$ 29.04	\$ 27.59
	Facilities Maintenance	20	0	\$ 21.51	\$ 20.40	\$ 14.00	\$ 37.94	5	0	\$ 31.57	\$ 33.66	\$ 19.60	\$ 48.10	\$ 23.60	\$ 21.70
	Information Technology	7	1	\$ 32.37	\$ 32.00	\$ 19.04	\$ 50.46	1	0	\$ 40.01	\$ 40.01	\$ 40.01	\$ 40.01	\$ 33.32	\$ 32.28
	Page	19	0	\$ 14.06	\$ 14.00	\$ 13.00	\$ 18.87							\$ 14.06	\$ 14.00
	Teen Services	9	0	\$ 27.71	\$ 27.97	\$ 18.73	\$ 34.52	3	0	\$ 37.04	\$ 37.19	\$ 34.52	\$ 39.42	\$ 30.25	\$ 31.45
	Youth Services (Children/Teen)	24	1	\$ 25.99	\$ 25.05	\$ 15.40	\$ 37.71	4	0	\$ 39.55	\$ 37.55	\$ 32.64	\$ 50.46	\$ 28.25	\$ 27.04
	Totals	281	12					88	1						
20,000-39,999															
	Administrative Staff	11	1	\$ 24.10	\$ 23.13	\$ 20.11	\$ 30.50	3	0	\$ 33.46	\$ 40.71	\$ 18.84	\$ 40.83	\$ 26.10	\$ 23.49
	Adult Services	27	2	\$ 20.72	\$ 19.60	\$ 14.00	\$ 35.98	16	0	\$ 28.71	\$ 28.80	\$ 14.00	\$ 39.32	\$ 24.08	\$ 23.73
	Assistant Director							5	1	\$ 37.18	\$ 35.71	\$ 34.07	\$ 42.11	\$ 37.18	\$ 35.71
	Borrower Services	81	2	\$ 16.20	\$ 15.30	\$ 14.00	\$ 24.99	11	0	\$ 25.41	\$ 25.30	\$ 16.00	\$ 32.00	\$ 17.67	\$ 16.00
	Branch Manager							2	0	\$ 28.85	\$ 28.85	\$ 23.46	\$ 34.25	\$ 28.85	\$ 28.85
	Children's Services	31	0	\$ 20.17	\$ 18.32	\$ 14.00	\$ 30.16	4	0	\$ 32.08	\$ 33.00	\$ 25.00	\$ 37.30	\$ 21.53	\$ 19.43
	Collection Management	11	0	\$ 19.90	\$ 19.67	\$ 14.00	\$ 27.09	4	0	\$ 29.93	\$ 30.73	\$ 22.88	\$ 35.36	\$ 22.57	\$ 22.87
	Digital Services														
	Director							11	1	\$ 44.08	\$ 43.74	\$ 30.00	\$ 53.30	\$ 44.08	\$ 43.74
	Educator	1	1	\$ 14.00	\$ 14.00	\$ 14.00	\$ 14.00	1	0	\$ 24.21	\$ 24.21	\$ 24.21	\$ 24.21	\$ 19.11	\$ 19.11
	Facilities Maintenance	18	0	\$ 19.34	\$ 19.50	\$ 14.00	\$ 27.39	5	0	\$ 35.78	\$ 37.70	\$ 23.00	\$ 48.29	\$ 23.45	\$ 21.37
	Information Technology	4	0	\$ 29.78	\$ 25.58	\$ 18.50	\$ 49.45	5	0	\$ 27.36	\$ 29.58	\$ 18.00	\$ 33.57	\$ 28.43	\$ 28.65
	Page	16	1	\$ 14.22	\$ 14.14	\$ 13.39	\$ 15.00							\$ 14.22	\$ 14.14
	Teen Services	5	0	\$ 25.17	\$ 28.72	\$ 18.36	\$ 30.77	2	0	\$ 26.36	\$ 26.36	\$ 20.00	\$ 32.73	\$ 25.51	\$ 28.72
	Youth Services (Children/Teen)	12	1	\$ 16.70	\$ 14.70	\$ 14.00	\$ 28.68	10	0	\$ 27.93	\$ 30.36	\$ 19.30	\$ 32.00	\$ 21.51	\$ 19.30
	Totals	217	8					79	2						
10,000-19,999															
	Administrative Staff	7	1	\$ 23.49	\$ 23.74	\$ 17.50	\$ 31.88							\$ 23.49	\$ 23.74
	Adult Services	19	0	\$ 23.62	\$ 21.11	\$ 16.48	\$ 33.87	10	0	\$ 30.72	\$ 30.77	\$ 21.23	\$ 37.52	\$ 26.15	\$ 26.91
	Assistant Director							4	0	\$ 38.62	\$ 38.98	\$ 32.03	\$ 44.49	\$ 38.62	\$ 38.98
	Borrower Services	57	1	\$ 16.60	\$ 15.92	\$ 14.00	\$ 23.82	6	1	\$ 24.64	\$ 24.58	\$ 15.73	\$ 32.25	\$ 17.46	\$ 16.00
	Branch Manager	1	0	\$ 24.29	\$ 24.29	\$ 24.29	\$ 24.29							\$ 24.29	\$ 24.29
	Children's Services	25	1	\$ 21.28	\$ 20.55	\$ 14.00	\$ 27.59	5	0	\$ 32.38	\$ 32.43	\$ 24.73	\$ 37.52	\$ 23.13	\$ 22.37
	Collection Management	9	0	\$ 19.43	\$ 16.48	\$ 14.85	\$ 30.09	3	0	\$ 31.73	\$ 26.63	\$ 24.00	\$ 44.56	\$ 22.51	\$ 20.21
	Digital Services	1	0	\$ 20.55	\$ 20.55	\$ 20.55	\$ 20.55							\$ 20.55	\$ 20.55
	Director							11	0	\$ 45.14	\$ 45.60	\$ 36.13	\$ 54.15	\$ 45.14	\$ 45.60
	Educator														
	Facilities Maintenance	13	0	\$ 19.18	\$ 18.50	\$ 14.98	\$ 25.00	1	0	\$ 26.45	\$ 26.45	\$ 26.45	\$ 26.45	\$ 19.70	\$ 18.57
	Information Technology	3	1	\$ 29.83	\$ 28.25	\$ 26.53	\$ 34.72	1	0	\$ 33.50	\$ 33.50	\$ 33.50	\$ 33.50	\$ 30.75	\$ 30.88
	Page	17	2	\$ 14.26	\$ 14.00	\$ 14.00	\$ 15.60							\$ 14.26	\$ 14.00
	Teen Services	4	0	\$ 26.19	\$ 26.82	\$ 17.00	\$ 34.14	2	0	\$ 29.41	\$ 29.41	\$ 29.15	\$ 29.67	\$ 27.27	\$ 28.13
	Youth Services (Children/Teen)	2	0	\$ 16.48	\$ 16.48	\$ 16.48	\$ 16.48	6	0	\$ 29.16	\$ 30.11	\$ 24.09	\$ 33.64	\$ 25.99	\$ 27.32
	Totals	158	6					49	1						

Salary Ranges by Population Group FY2024

Size of Service Population	Job Category	Non-supervisor						Supervisor						Combined		
		No. of staff employed per category	Vacancies	Average	Median	Low	High	No. of staff employed per category	Vacancies	Average	Median	Low	High	Average	Median	
5,000-9,999																
	Administrative Staff	6	1	\$ 22.87	\$ 21.95	\$ 16.50	\$ 34.07								\$ 22.87	\$ 21.95
	Adult Services	1	0	\$ 22.75	\$ 22.75	\$ 22.75	\$ 22.75	6	0	\$ 20.92	\$ 20.75	\$ 16.39	\$ 26.93		\$ 21.18	\$ 22.75
	Assistant Director	1	0	\$ 28.64	\$ 28.64	\$ 28.64	\$ 28.64	1	0	\$ 23.17	\$ 23.17	\$ 23.17	\$ 23.17		\$ 25.91	\$ 25.91
	Borrower Services	38	0	\$ 16.08	\$ 15.50	\$ 14.00	\$ 22.50	8	0	\$ 20.77	\$ 18.78	\$ 17.22	\$ 31.50		\$ 16.96	\$ 16.48
	Branch Manager															
	Children's Services	1	0	\$ 17.34	\$ 17.34	\$ 17.34	\$ 17.34	3	0	\$ 24.66	\$ 28.57	\$ 16.00	\$ 29.40		\$ 22.83	\$ 22.96
	Collection Management	1	0	\$ 25.82	\$ 25.82	\$ 25.82	\$ 25.82	1	0	\$ 18.04	\$ 18.04	\$ 18.04	\$ 18.04		\$ 21.93	\$ 21.93
	Digital Services															
	Director							10	0	\$ 34.84	\$ 37.67	\$ 24.00	\$ 39.43		\$ 34.84	\$ 37.67
	Educator															
	Facilities Maintenance	4	0	\$ 25.70	\$ 22.48	\$ 17.82	\$ 40.00								\$ 25.70	\$ 22.48
	Information Technology	2	0	\$ 18.59	\$ 18.59	\$ 16.00	\$ 21.18	1	0	\$ 29.25	\$ 29.25	\$ 29.25	\$ 29.25		\$ 22.14	\$ 21.18
	Page	8	0	\$ 14.52	\$ 14.49	\$ 14.00	\$ 15.00								\$ 14.52	\$ 14.49
	Teen Services															
	Youth Services (Children/Teen)	3	1	\$ 20.57	\$ 22.12	\$ 15.00	\$ 24.58	3	0	\$ 21.01	\$ 20.00	\$ 17.50	\$ 25.52		\$ 20.79	\$ 21.06
	Totals	65	2					33	0							
Below 5,000																
	Administrative Staff	1	0	\$ 21.50	\$ 21.50	\$ 21.50	\$ 21.50								\$ 21.50	\$ 21.50
	Adult Services	4	0	\$ 15.03	\$ 14.63	\$ 14.00	\$ 16.87								\$ 15.03	\$ 14.63
	Assistant Director							2	0	\$ 20.68	\$ 20.68	\$ 18.86	\$ 22.50		\$ 20.68	\$ 20.68
	Borrower Services	26	0	\$ 16.06	\$ 15.00	\$ 14.00	\$ 20.67	1	0	\$ 16.00	\$ 16.00	\$ 16.00	\$ 16.00		\$ 16.06	\$ 15.00
	Branch Manager															
	Children's Services	4	2	\$ 16.63	\$ 15.44	\$ 14.00	\$ 21.65	1	0	\$ 20.50	\$ 20.50	\$ 20.50	\$ 20.50		\$ 17.40	\$ 16.87
	Collection Management	1	0	\$ 18.50	\$ 18.50	\$ 18.50	\$ 18.50	2	0	\$ 23.52	\$ 23.52	\$ 22.12	\$ 24.93		\$ 21.85	\$ 22.12
	Digital Services															
	Director							9	0	\$ 28.61	\$ 26.71	\$ 20.37	\$ 38.83		\$ 28.61	\$ 26.71
	Educator															
	Facilities Maintenance	4	0	\$ 19.19	\$ 15.00	\$ 14.00	\$ 32.77								\$ 19.19	\$ 15.00
	Information Technology	1	0	\$ 14.00	\$ 14.00	\$ 14.00	\$ 14.00								\$ 14.00	\$ 14.00
	Page	1	0	\$ 14.00	\$ 14.00	\$ 14.00	\$ 14.00								\$ 14.00	\$ 14.00
	Teen Services															
	Youth Services (Children/Teen)	2	0	\$ 18.25	\$ 18.25	\$ 18.00	\$ 18.50	4	0	\$ 22.25	\$ 21.63	\$ 18.27	\$ 27.48		\$ 20.92	\$ 19.25
	Totals	44	2					19	0							

Salary Ranges - Full Time vs. Part Time FY2024

Job Category		Part Time						Full Time					
		No. of staff employed per category	Vacancies	Average	Median	Low	High	No. of staff employed per category	Vacancies	Average	Median	Low	High
Administrative Staff	Supervisor							14	0	\$ 42.53	\$ 41.85	\$ 18.84	\$ 62.57
	Non	16	2	\$ 20.59	\$ 20.95	\$ 14.00	\$ 26.32	31	3	\$ 29.49	\$ 29.04	\$ 20.40	\$ 42.82
Adult Services	Supervisor	8	0	\$ 21.83	\$ 19.25	\$ 14.00	\$ 33.20	37	1	\$ 32.38	\$ 32.54	\$ 20.00	\$ 46.84
	Non	54	3	\$ 19.78	\$ 19.82	\$ 14.00	\$ 32.95	28	2	\$ 29.41	\$ 28.11	\$ 19.55	\$ 39.18
Assistant Director	Supervisor	2	0	\$ 21.02	\$ 21.02	\$ 18.86	\$ 23.17	16	1	\$ 41.68	\$ 40.77	\$ 22.50	\$ 64.28
	Non							1	0	\$ 28.64	\$ 28.64	\$ 28.64	\$ 28.64
Borrower Services	Supervisor	9	0	\$ 18.36	\$ 18.04	\$ 15.73	\$ 22.50	27	1	\$ 26.95	\$ 26.23	\$ 18.55	\$ 43.56
	Non	238	4	\$ 16.00	\$ 15.30	\$ 14.00	\$ 28.02	62	2	\$ 22.18	\$ 21.15	\$ 16.00	\$ 32.80
Branch Manager	Supervisor	1	0	\$ 23.46	\$ 23.46	\$ 23.46	\$ 23.46	11	0	\$ 34.99	\$ 36.05	\$ 24.29	\$ 46.11
	Non							6	1	\$ 30.71	\$ 30.76	\$ 27.43	\$ 33.69
Children's Services	Supervisor	4	0	\$ 23.67	\$ 20.50	\$ 16.00	\$ 34.52	14	0	\$ 32.79	\$ 33.06	\$ 24.73	\$ 39.22
	Non	56	3	\$ 19.19	\$ 18.16	\$ 14.00	\$ 29.11	17	0	\$ 29.53	\$ 27.50	\$ 17.19	\$ 41.71
Collection Management	Supervisor	3	0	\$ 21.39	\$ 22.12	\$ 18.04	\$ 24.00	14	0	\$ 34.04	\$ 34.94	\$ 22.72	\$ 45.61
	Non	15	0	\$ 17.59	\$ 16.07	\$ 14.00	\$ 26.50	20	0	\$ 24.89	\$ 23.85	\$ 16.36	\$ 40.82
Digital Services	Supervisor							3	0	\$ 32.92	\$ 33.63	\$ 31.28	\$ 33.84
	Non	3	0	\$ 22.29	\$ 21.50	\$ 20.55	\$ 24.82	5	0	\$ 21.84	\$ 21.83	\$ 17.37	\$ 30.30
Director	Supervisor	7	0	\$ 27.68	\$ 27.86	\$ 24.00	\$ 30.87	41	1	\$ 43.80	\$ 42.29	\$ 20.37	\$ 85.08
	Non												
Educator	Supervisor							5	0	\$ 33.09	\$ 35.19	\$ 24.21	\$ 36.15
	Non	10	2	\$ 25.95	\$ 24.70	\$ 14.00	\$ 50.00	4	0	\$ 26.71	\$ 27.39	\$ 24.35	\$ 27.69
Facilities Maintenance	Supervisor							11	0	\$ 33.02	\$ 33.66	\$ 19.60	\$ 48.29
	Non	42	0	\$ 18.83	\$ 17.82	\$ 14.00	\$ 40.00	17	0	\$ 24.58	\$ 24.46	\$ 18.60	\$ 37.94
Information Technology	Supervisor	2	0	\$ 23.63	\$ 23.63	\$ 18.00	\$ 29.25	6	0	\$ 32.05	\$ 31.76	\$ 25.64	\$ 40.01
	Non	4	0	\$ 25.16	\$ 18.59	\$ 14.00	\$ 49.45	13	2	\$ 29.67	\$ 28.65	\$ 18.50	\$ 50.46
Page	Supervisor												
	Non	60	3	\$ 14.12	\$ 14.00	\$ 13.00	\$ 15.60	1	0	\$ 18.87	\$ 18.87	\$ 18.87	\$ 18.87
Teen Services	Supervisor							7	0	\$ 31.81	\$ 32.73	\$ 20.00	\$ 39.42
	Non	5	0	\$ 22.05	\$ 19.06	\$ 17.00	\$ 28.72	13	0	\$ 28.50	\$ 29.04	\$ 18.73	\$ 34.52
Youth Services (Children and Teen)	Supervisor	4	0	\$ 19.39	\$ 19.65	\$ 18.27	\$ 20.00	23	0	\$ 29.95	\$ 30.29	\$ 17.50	\$ 50.46
	Non	22	2	\$ 17.37	\$ 16.48	\$ 14.00	\$ 22.12	21	1	\$ 27.60	\$ 27.29	\$ 16.50	\$ 37.71

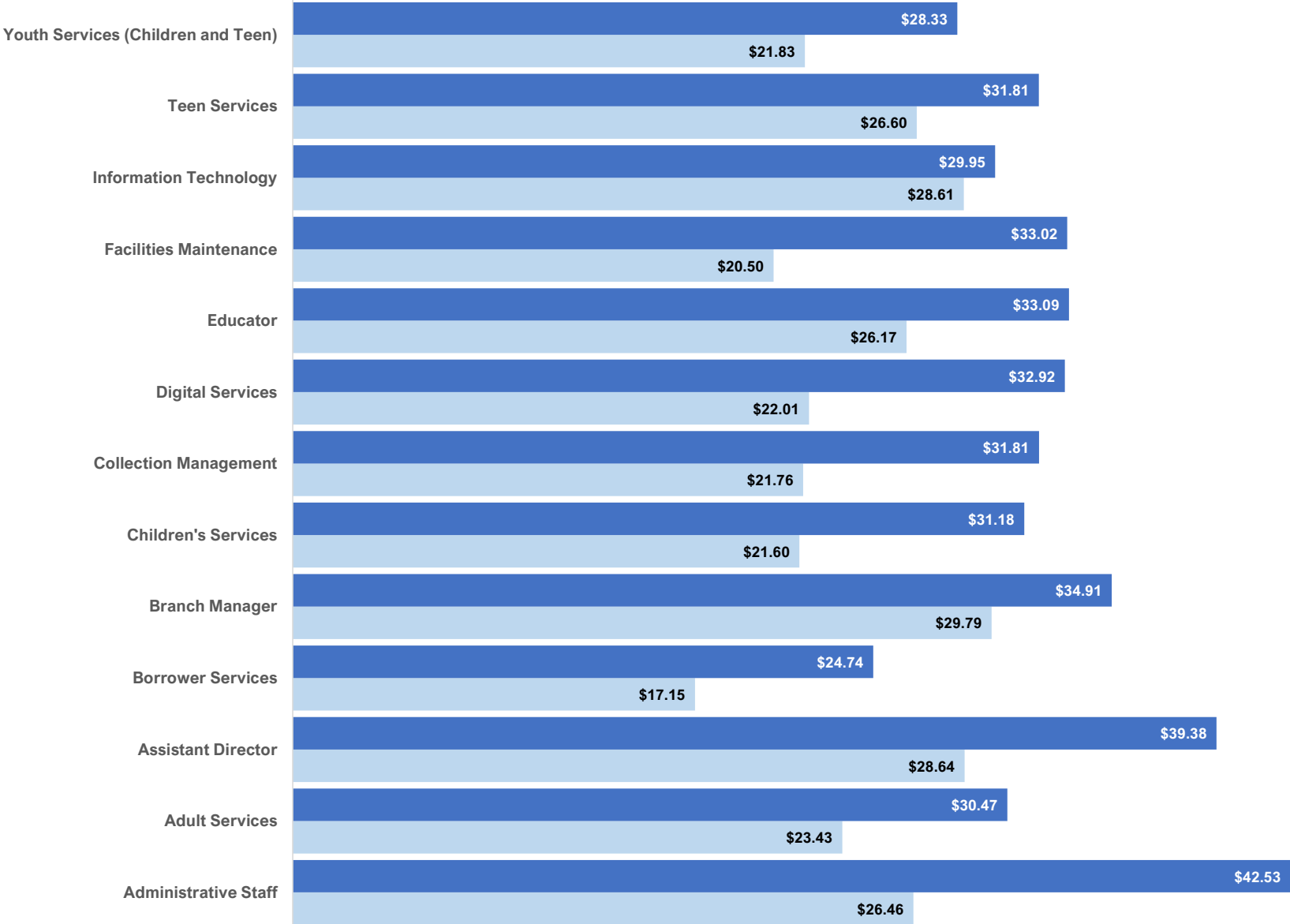
Notes

Job Category - Definitions for each category are available on the Job Category Definitions tab.

Hourly Rates - To enhance comparability, OLIS has calculated hourly wage rates, based on a 52-week work year, for positions where only annual salary information was provided.

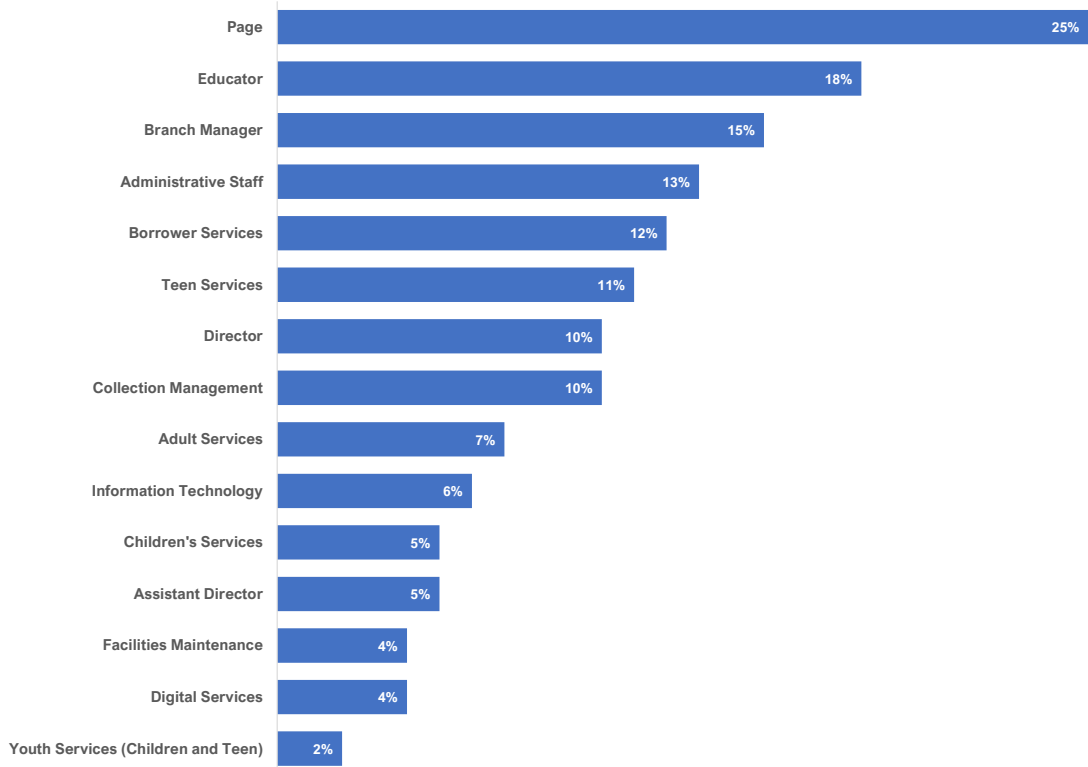
Comparison of Average Wage in FY24 of each Job Category by Supervisor Status

■ Supervisor ■ Non-Supervisor



*This chart does not depict Director or Page job categories. All Director positions are Supervisor roles, and all Page positions are Non-Supervisor roles.

Percent change of average hourly wage for job categories between FY21 and FY24.



To create this chart, OLIS calculated the percent change of the average hourly wage from FY2021 to FY2024, for each job category. Negative percent changes show that the average salary for that job category decreased. Reasons for decrease may include:

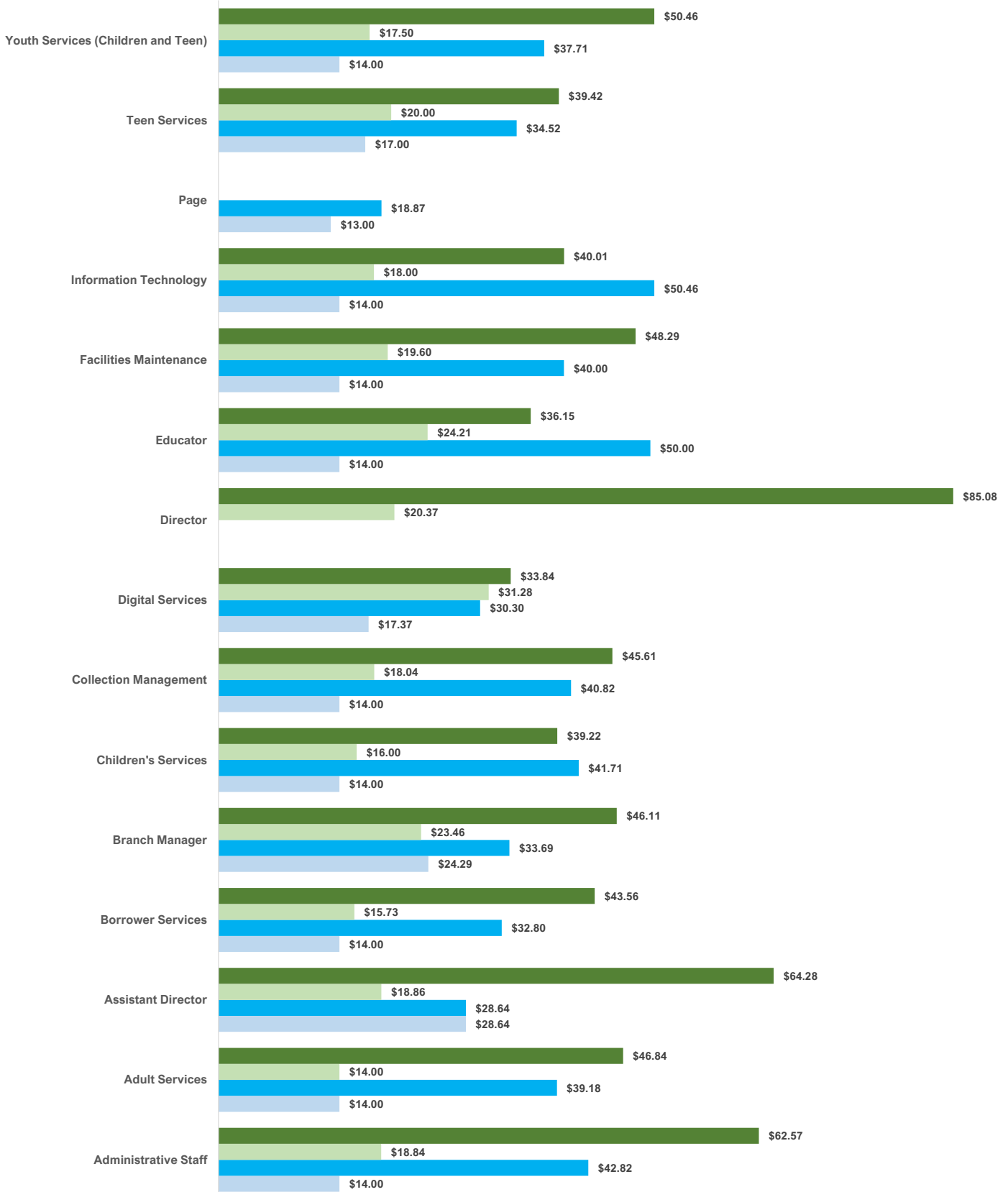
- change in how a position was categorized when reported on the Annual Survey;
- employee filling position left and position was filled by someone earning a lower wage.

It is also important to note that the average calculation is impacted by the number of positions within a given category. For example, in FY24 the average wage for Borrower Services is calculating the average from 336 positions, whereas the average wage for Digital Services is based on only 11 positions.

The significant increase in the average wage for Page category reflects the mandatory increases in Rhode Island's minimum wage. In FY2024, minimum wage is set at \$14.00 per hour.

Wage Ranges by Job Category for FY24 By Supervisor Status

■ Supervisor High ■ Supervisor Low ■ Non-supervisor High ■ Non-supervisor Low



Job Category Definitions FY2024

Adult Services: Staff who are primarily assigned to work with adults. May research information for patrons; provide instruction and assistance with the use of technology; provide readers' advisory services; and contribute to maintaining the collection. Plans and/or coordinates library programs, partnerships, or outreach services for adults and seniors.

Assistant Director: The Assistant Director reports to the Library Director and is a member of the library leadership team. Main areas of focus include library operations management, leading and mentoring staff, developing and implementing strategic initiatives, budget planning, and project management. Assumes responsibility in the absence of the Director.

Administrative Staff: Staff who support the administrative operations of the library. Responsibilities may include clerical, accounts payable/receivable, payroll, human resources, development, communications, or notary. Staff may act as civic liaison to municipal departments. Roles may or may not be public facing.

Borrower Services: Performs all public service duties as they relate to circulation and customer service. Often serves as the first point of contact for patrons, orienting them to the library and its services, including explaining policies and procedures. Duties typically include checking materials in and out, managing holds, collecting fines, shelving and straightening the collection, registering patrons for library cards, assisting with copy, fax, and printing. May require a high school diploma; some positions may be supervisory.

Branch Manager: Provides oversight for daily operations of the facility. Supervises branch library staff as needed. May plan and conduct programs for adults, youth, and families. Provides assistance directly to library users on the use of library services and technology.

Children's Services: Staff who are primarily assigned to work with children ages 0-12 and their caregivers. May partner with schools and other youth-serving organizations or professionals. May plan, conduct, or assist in delivery of library services for youth. Advises users on library resources. May select and maintain materials for the youth collection. May plan and conduct programs and outreach services.

Collection Management: Staff who are primarily responsible for maintaining the collection, which may include selecting, ordering, receiving, cataloging, processing, organizing, or deaccessioning of materials. May have responsibility for overseeing the materials budget. Supervisory positions usually held by professional librarians.

Digital Services: Staff who are primarily assigned to instruct patrons in the use of various technologies and digital content, including makerspace equipment. Provides instruction and professional support to library staff. May build and maintain the library's online presence (which could include social media) and digital platforms. Identifies and implements new and emerging technologies.

Director: Chief administrative officer of the library or library system. Reports directly to a board of trustees. Plans and directs all aspects of the operation. May have job titles such as Librarian or Head Librarian. May represent the library to the community.

Educator: Staff who are primarily assigned to teach classes, courses, and skills that fall outside traditional librarian instructional roles. Areas of focus may include literacy, GED, citizenship, early childhood, language instruction, or workforce skills. May or may not require certification or specialized/advanced

Facilities Maintenance: Staff who are primarily responsible for the performance of custodial and maintenance duties necessary to clean and maintain the library building and grounds. May oversee physical plant systems, maintain inventory of maintenance supplies, and make minor repairs as needed. May be responsible for building security.

Information Technology: Staff who are primarily assigned to select, purchase, install, inventory, and maintain the library's IT equipment. May include hardware and peripherals, software, phone system, wired and wireless network infrastructure. Coordinates with Ocean State Libraries network and IT staff to upgrade and maintain consortium level network. May train and assist staff on library technology. May build and maintain the library's website.

Page: Retrieves and returns materials to shelves and/or files. Reads and straightens shelves.

Teen Services: Staff who are primarily assigned to work with teens ages 13-18 and their caregivers. May partner with schools and other youth-serving organizations or professionals. May plan, conduct, or assist in delivery of library services for youth. Advises users on library resources. May select and maintain materials for the youth collection. May plan and conduct programs and outreach services.

Youth Services: Staff who are primarily assigned to work with youth ages 0-18 and their caregivers. May partner with schools and other youth-serving organizations or professionals. May plan, conduct, or assist in delivery of library services for youth. Advises users on library resources. May select and maintain materials for the youth collection. May plan and conduct programs and outreach services.