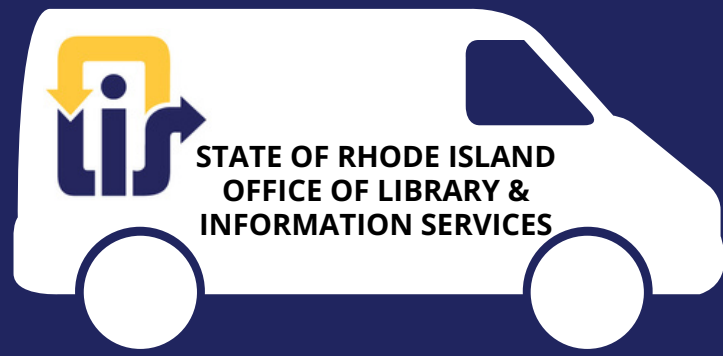


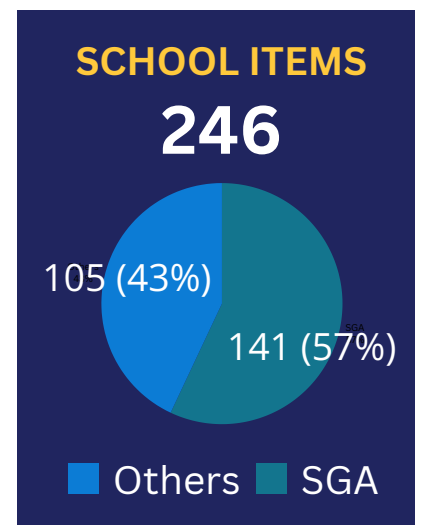
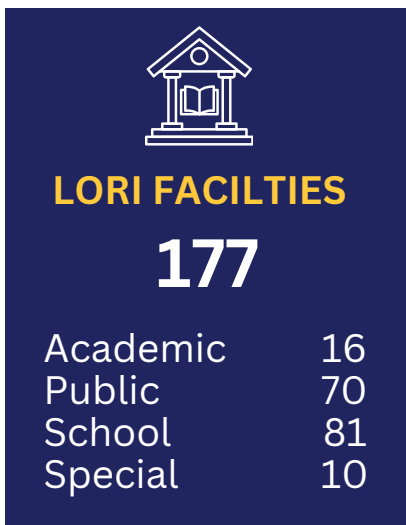
Library of Rhode Island Delivery Item Count Spring 2024



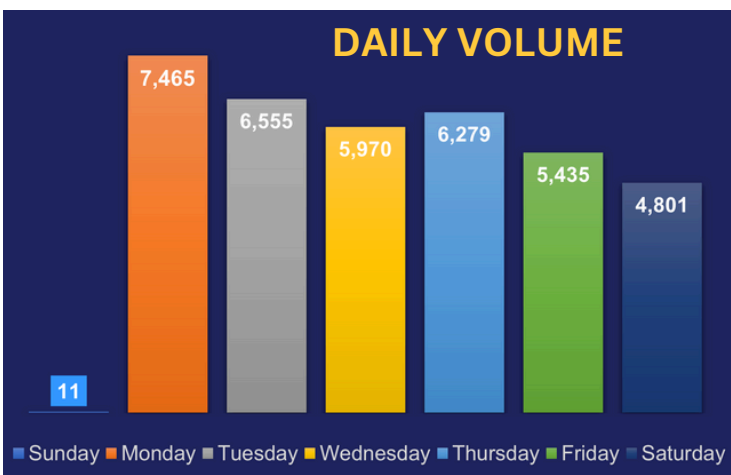
March 31 - April 6, 2024

About the survey

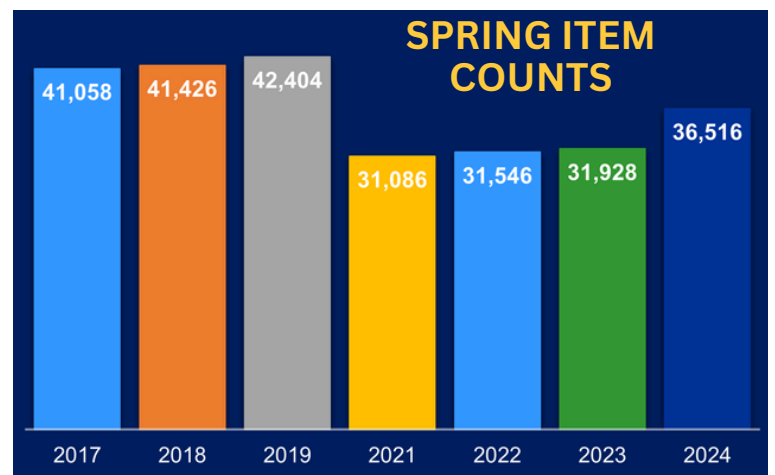
The Library of Rhode Island (LORI) delivery network is comprised of libraries across Rhode Island, including public, school, higher education, government, specialty, and independent libraries. Delivery item counts are held biannually, typically in April and October. The goal of the survey is to provide a general overview of the entire network, examining the volume of material handled by the network's delivery system.



100% of libraries reported data



*Easter Sunday



The statewide delivery service, funded by the Rhode Island Office of Library & Information Services is provided to certified members of the Library of Rhode Island (LORI) network for interlibrary loan and other resource sharing activities.

